

## NP - Nuts

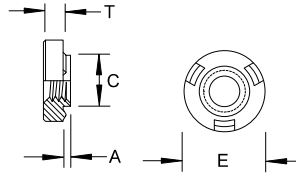
Weld

Inch

Sample Part Number

NPST - 832 - .030 - Z

Series/ Thread Shank Finish  
Material Code



Thread	Thread Code	A Shank MAX	Sheet Thickness MIN	Hole Size in Sheet +.004/-0.000	C MAX	E +.000/-0.010	T ±.004	Dist. Hole C/L to Edge MIN
4 - 40	440	.030	.030	.173	.171	.31	.063	.15
6 - 32	632	.030	.030	.193	.191	.34	.093	.17
8 - 32	832	.030	.030	.218	.216	.37	.107	.18
10 - 24	1024	.030	.030	.250	.248	.44	.155	.22
10 - 32	1032	.030	.030	.250	.248	.44	.155	.22
1/4 - 20	2520	.048	.050	.316	.315	.52	.185	.26

Custom sizes available.

Material	Description	Finish	Description
ST	Carbon Steel	Z	Zinc Clear
SS	300 Series Stainless Steel	P	Passivate



Pre Installation



Post Installation

Revd. 06/1/11 All Dimensions are in Inches

## NP - Nuts

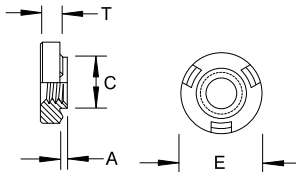
Weld

Metric

Sample Part Number

NPST - M5 - 0.76 - Z

Series/ Thread Shank Finish  
Material Code



Thread	Thread Code	A Shank MAX	Sheet Thickness MIN	Hole Size in Sheet +0.1/-0.0	C MAX	E +0.00/-0.25	T ±0.1	Dist. Hole C/L to Edge MIN
M3 x 0.5	M3	0.76	0.77	4.4	4.37	7.85	1.5	4.47
M4 x 0.7	M4	0.76	0.77	5.6	5.57	9.4	2.6	5.2
M5 x 0.8	M5	0.76	0.77	6.4	6.33	11.2	3.8	5.65
M6 x 1	M6	1.24	1.25	8.1	8.03	13.2	4.6	6.7

Custom sizes available.

Material	Description	Finish	Description
ST	Carbon Steel	Z	Zinc Clear
SS	300 Series Stainless Steel	P	Passivate



Pre Installation



Post Installation

44

All Dimensions are in Metric