

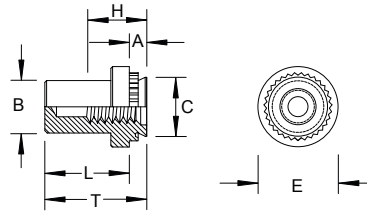
NB - Nuts

Self-Clinching, Blind
Inch

Sample Part Number

NBST - 440 - .038 - Z

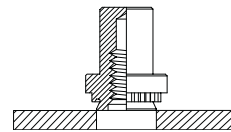
Series/ Thread Shank Finish
Material Code



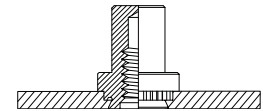
Thread	Thread Code	A Shank MAX	Sheet Thickness MIN	Hole Size in Sheet +.003/-0.000	B Barrel Diameter MAX	C Shank Diameter MAX	E ±.010	H Depth Full Threads MIN	L MAX	T ±.010	Dist. Hole C/L to Edge MIN
4 - 40	440	.038	.040	.166	.150	.165	.25	.21	.335	.38	.19
		.054	.056								
6 - 32	632	.038	.040	.1875	.169	.187	.28	.23	.335	.38	.22
		.054	.056								
8 - 32	832	.038	.040	.213	.204	.212	.31	.28	.385	.44	.27
		.054	.056								
10 - 32	1032	.038	.040	.250	.235	.249	.34	.28	.385	.44	.28
		.054	.056								
1/4 - 20	2520	.054	.056	.344	.305	.343	.43	.31	.500	.56	.34
		.087	.090								

Custom sizes available.

Material	Description	Finish	Description
ST	Carbon Steel	Z	Zinc Clear
SS	300 Series Stainless Steel	P	Passivate
S4	400 Series Stainless Steel	P	Passivate



Pre-Installation



Post Installation

Revd. 06/1/11 All Dimensions are in Inches

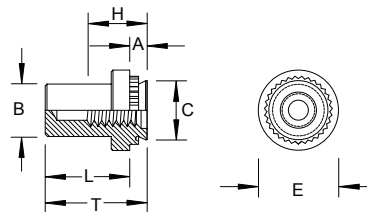
NB - Nuts

Self-Clinching, Blind
Metric

Sample Part Number

NBST - M3 - 0.97 - Z

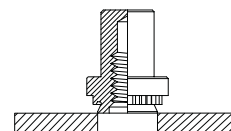
Series/ Thread Shank Finish
Material Code



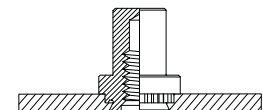
Thread	Thread Code	A Shank MAX	Sheet Thickness MIN	Hole Size in Sheet +0.08	B Barrel Diameter MAX	C Shank Diameter MAX	E ±0.25	H Depth Full Threads MIN	L MAX	T ±0.25	Dist. Hole C/L to Edge MIN
M3 x 0.5	M3	0.97	1	4.25	3.84	4.22	6.35	5.3	8.5	9.6	4.8
		1.38	1.4								
M4 x 0.7	M4	0.97	1	5.4	5.2	5.38	7.95	7.1	9.8	11.2	6.9
		1.38	1.4								
M5 x 0.8	M5	0.97	1	6.4	6.02	6.38	8.75	7.1	9.8	11.2	7.1
		1.38	1.4								
M6 x 1	M6	1.38	1.4	8.75	7.8	8.72	11.1	7.8	12.7	14.3	8.6
		2.21	2.3								

Custom sizes available.

Material	Description	Finish	Description
ST	Carbon Steel	Z	Zinc Clear
SS	300 Series Stainless Steel	P	Passivate
S4	400 Series Stainless Steel	P	Passivate



Pre-Installation



Post Installation

All Dimensions are in Metric