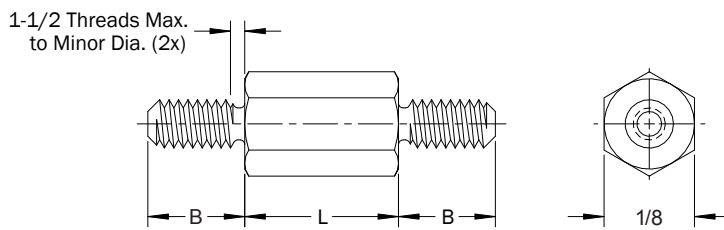


1/8 Hex Male-Male Standoffs

PART DESCRIPTION EXAMPLE

HMM1/8 X .500 — 256 X .156 — STL — Z

Body Length Code
 Thread Code
 Thread Length Code
 Material Code
 Finish Code



THREAD

Thread	Thread Code	B (Thread Length Code)
0-80	080	.094
2-56	256	.156

LENGTH

Length	L (Length Code) ±.005
3/32	.094
1/8	.125
5/32	.156
3/16	.187
7/32	.219
1/4	.250
9/32	.281
5/16	.312
11/32	.344
3/8	.375
13/32	.406
7/16	.437

Length	L (Length Code) ±.005
15/32	.469
1/2	.500
17/32	.531
9/16	.562
19/32	.594
5/8	.625
21/32	.656
11/16	.687
23/32	.719
3/4	.750
25/32	.781
13/16	.812

Length	L (Length Code) ±.005
27/32	.844
7/8	.875
29/32	.906
15/16	.937
31/32	.969
1	1.000
1-1/16	1.062
1-1/8	1.125
1-3/16	1.187
1-1/4	1.250
1-5/16	1.312
1-3/8	1.375

Length	L (Length Code) ±.005
1-7/16	1.437
1-1/2	1.500
1-9/16	1.562
1-5/8	1.625
1-11/16	1.687
1-3/4	1.750
1-13/16	1.812
1-7/8	1.875
1-15/16	1.937
2	2.000

All dimensions in inches. Custom sizes, materials, and finishes available.

1/8 Hex Male-Male Standoffs

MATERIAL

Material Code	Material Description
STL	Carbon Steel
SS	Stainless Steel
AL	Aluminum
BRS	Brass
NYVO	Nylon UL-94 V0
NYV2	Nylon UL-94-V2

FINISH

Finish Code	Finish Description
Z	Zinc with Clear Chromate
Z-BLK	Zinc with Black Chromate
Z-YEL	Zinc with Yellow Chromate
NI	Electroplated Bright Nickel
BLK-OX	Black Oxide
CF	Clear Chemical Film
CF-GOLD	Gold Chemical Film
P	Passivated
PLN	Plain
TIN	Electroplated Bright Tin
TIN-MATTE	Electroplated Matte Tin

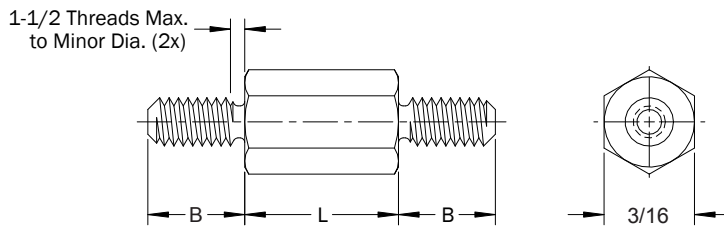
3/16 Hex Male-Male Standoffs

PART DESCRIPTION EXAMPLE

HMM3/16 X .750 — 440 X .187 — STL — Z

T
T
T
T
T

Body Length Code
Thread Code
Thread Length Code
Material Code
Finish Code



THREAD

Thread	Thread Code	B (Thread Length Code)
2-56	256	.156
4-40	440	.187
6-32	632	.250

LENGTH

Length	L (Length Code) ±.005
3/32	.094
1/8	.125
5/32	.156
3/16	.187
7/32	.219
1/4	.250
9/32	.281
5/16	.312
11/32	.344
3/8	.375

Length	L (Length Code) ±.005
13/32	.406
7/16	.437
15/32	.469
1/2	.500
17/32	.531
9/16	.562
19/32	.594
5/8	.625
21/32	.656
11/16	.687

Length	L (Length Code) ±.005
23/32	.719
3/4	.750
25/32	.781
13/16	.812
27/32	.844
7/8	.875
29/32	.906
15/16	.937
31/32	.969
1	1.000

Length	L (Length Code) ±.005
1-1/16	1.062
1-1/8	1.125
1-3/16	1.187
1-1/4	1.250
1-5/16	1.312
1-3/8	1.375
1-7/16	1.437
1-1/2	1.500
1-9/16	1.562
1-5/8	1.625

All dimensions in inches. Custom sizes, materials, and finishes available.

3/16 Hex Male-Male Standoffs

LENGTH (CONTINUED)

Length	L (Length Code) ±.005
1-11/16	1.687
1-3/4	1.750
1-13/16	1.812
1-7/8	1.875
1-15/16	1.937
2	2.000
2-1/16	2.062
2-1/8	2.125
2-3/16	2.187
2-1/4	2.250
2-5/16	2.312
2-3/8	2.375
2-7/16	2.437
2-1/2	2.500
2-9/16	2.562
2-5/8	2.625
2-11/16	2.687
2-3/4	2.750
2-13/16	2.812
2-7/8	2.875
2-15/16	2.937
3	3.000

MATERIAL

Material Code	Material Description
STL	Carbon Steel
SS	Stainless Steel
AL	Aluminum
BRS	Brass
NYVO	Nylon UL-94 V0
NYV2	Nylon UL-94-V2

FINISH

Finish Code	Finish Description
Z	Zinc with Clear Chromate
Z-BLK	Zinc with Black Chromate
Z-YEL	Zinc with Yellow Chromate
NI	Electroplated Bright Nickel
BLK-OX	Black Oxide
CF	Clear Chemical Film
CF-GOLD	Gold Chemical Film
P	Passivated
PLN	Plain
TIN	Electroplated Bright Tin
TIN-MATTE	Electroplated Matte Tin

HMM 3/16 Hex Male-Male Standoffs

All dimensions in inches.
Custom sizes, materials, and finishes available.

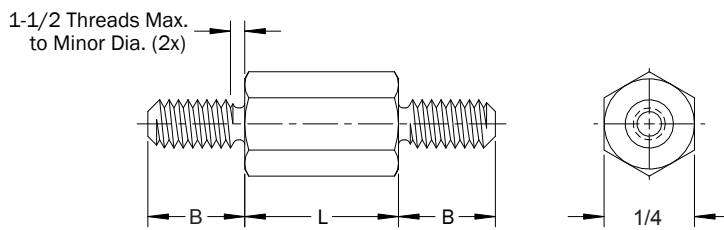
1/4 Hex Male-Male Standoffs

PART DESCRIPTION EXAMPLE

HMM1/4 X 1.000 — 632 X .250 — STL — Z

T
T
T
T
T

Body Length Code
Thread Code
Thread Length Code
Material Code
Finish Code



THREAD

Thread	Thread Code	B (Thread Length Code)
2-56	256	.156
4-40	440	.187
6-32	632	.250
8-32	832	.375
10-32	1032	.375

LENGTH

Length	L (Length Code) ±.005
3/32	.094
1/8	.125
5/32	.156
3/16	.187
7/32	.219
1/4	.250
9/32	.281
5/16	.312

Length	L (Length Code) ±.005
11/32	.344
3/8	.375
13/32	.406
7/16	.437
15/32	.469
1/2	.500
17/32	.531
9/16	.562

Length	L (Length Code) ±.005
19/32	.594
5/8	.625
21/32	.656
11/16	.687
23/32	.719
3/4	.750
25/32	.781
13/16	.812

Length	L (Length Code) ±.005
27/32	.844
7/8	.875
29/32	.906
15/16	.937
31/32	.969
1	1.000
1-1/16	1.062
1-1/8	1.125

All dimensions in inches. Custom sizes, materials, and finishes available.

1/4 Hex Male-Male Standoffs

LENGTH (CONTINUED)

Length	L (Length Code) ±.005	Length	L (Length Code) ±.005
1-3/16	1.187	4	4.000
1-1/4	1.250	4-1/4	4.250
1-5/16	1.312	4-1/2	4.500
1-3/8	1.375	4-3/4	4.750
1-7/16	1.437	5	5.000
1-1/2	1.500	5-1/4	5.250
1-9/16	1.562	5-1/2	5.500
1-5/8	1.625	5-3/4	5.750
1-11/16	1.687	6	6.000
1-3/4	1.750	6-1/4	6.250
1-13/16	1.812	6-1/2	6.500
1-7/8	1.875	6-3/4	6.750
1-15/16	1.937	7	7.000
2	2.000	7-1/4	7.250
2-1/8	2.125	7-1/2	7.500
2-1/4	2.250	7-3/4	7.750
2-3/8	2.375	8	8.000
2-1/2	2.500	8-1/4	8.250
2-5/8	2.625	8-1/2	8.500
2-3/4	2.750	8-3/4	8.750
2-7/8	2.875	9	9.000
3	3.000	9-1/4	9.250
3-1/4	3.250	9-1/2	9.500
3-1/2	3.500	9-3/4	9.750
3-3/4	3.750	10	10.000

MATERIAL

Material Code	Material Description
STL	Carbon Steel
SS	Stainless Steel
AL	Aluminum
BRS	Brass
NYVO	Nylon UL-94 V0
NYV2	Nylon UL-94-V2

FINISH

Finish Code	Finish Description
Z	Zinc with Clear Chromate
Z-BLK	Zinc with Black Chromate
Z-YEL	Zinc with Yellow Chromate
NI	Electroplated Bright Nickel
BLK-OX	Black Oxide
CF	Clear Chemical Film
CF-GOLD	Gold Chemical Film
P	Passivated
PLN	Plain
TIN	Electroplated Bright Tin
TIN-MATTE	Electroplated Matte Tin

HMM 1/4 Hex Male-Male Standoffs

All dimensions in inches.
Custom sizes, materials, and finishes available.

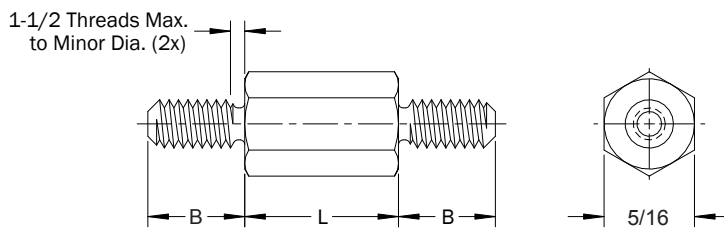
5/16 Hex Male-Male Standoffs

PART DESCRIPTION EXAMPLE

HMM5/16 X 1.250 — 832 X .375 — STL — Z

T
T
T
T
T

Body Length Code Thread Code Thread Length Code Material Code Finish Code



THREAD

Thread	Thread Code	B (Thread Length Code)
4-40	440	.187
6-32	632	.250
8-32	832	.375
10-32	1032	.375

LENGTH

Length	L (Length Code) ±.005
3/32	.094
1/8	.125
5/32	.156
3/16	.187
7/32	.219
1/4	.250
9/32	.281
5/16	.312
11/32	.344

Length	L (Length Code) ±.005
3/8	.375
13/32	.406
7/16	.437
15/32	.469
1/2	.500
17/32	.531
9/16	.562
19/32	.594
5/8	.625

Length	L (Length Code) ±.005
21/32	.656
11/16	.687
23/32	.719
3/4	.750
25/32	.781
13/16	.812
27/32	.844
7/8	.875
29/32	.906

Length	L (Length Code) ±.005
15/16	.937
31/32	.969
1	1.000
1-1/16	1.062
1-1/8	1.125
1-3/16	1.187
1-1/4	1.250
1-5/16	1.312
1-3/8	1.375

All dimensions in inches. Custom sizes, materials, and finishes available.

5/16 Hex Male-Male Standoffs

LENGTH (CONTINUED)

Length	L (Length Code) ±.005	Length	L (Length Code) ±.005
1-7/16	1.437	4-1/2	4.500
1-1/2	1.500	4-3/4	4.750
1-9/16	1.562	5	5.000
1-5/8	1.625	5-1/4	5.250
1-11/16	1.687	5-1/2	5.500
1-3/4	1.750	5-3/4	5.750
1-13/16	1.812	6	6.000
1-7/8	1.875	6-1/4	6.250
1-15/16	1.937	6-1/2	6.500
2	2.000	6-3/4	6.750
2-1/8	2.125	7	7.000
2-1/4	2.250	7-1/4	7.250
2-3/8	2.375	7-1/2	7.500
2-1/2	2.500	7-3/4	7.750
2-5/8	2.625	8	8.000
2-3/4	2.750	8-1/4	8.250
2-7/8	2.875	8-1/2	8.500
3	3.000	8-3/4	8.750
3-1/4	3.250	9	9.000
3-1/2	3.500	9-1/4	9.250
3-3/4	3.750	9-1/2	9.500
4	4.000	9-3/4	9.750
4-1/4	4.250	10	10.000

MATERIAL

Material Code	Material Description
STL	Carbon Steel
SS	Stainless Steel
AL	Aluminum
BRS	Brass
NYVO	Nylon UL-94 V0
NYV2	Nylon UL-94-V2

FINISH

Finish Code	Finish Description
Z	Zinc with Clear Chromate
Z-BLK	Zinc with Black Chromate
Z-YEL	Zinc with Yellow Chromate
NI	Electroplated Bright Nickel
BLK-OX	Black Oxide
CF	Clear Chemical Film
CF-GOLD	Gold Chemical Film
P	Passivated
PLN	Plain
TIN	Electroplated Bright Tin
TIN-MATTE	Electroplated Matte Tin

HMM 5/16 Hex Male-Male Standoffs

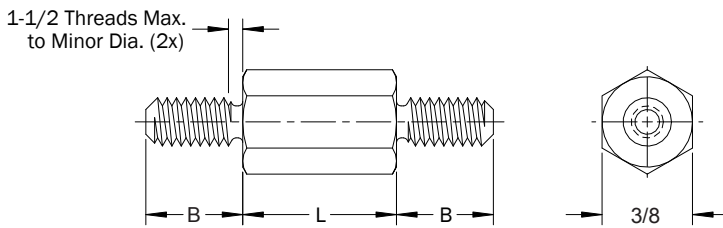
All dimensions in inches.
Custom sizes, materials, and finishes available.

3/8 Hex Male-Male Standoffs

PART DESCRIPTION EXAMPLE

HMM3/8 X 1.500 — 1032 X .375 — STL — Z

Body Length Code
 Thread Code
 Thread Length Code
 Material Code
 Finish Code



THREAD

Thread	Thread Code	B (Thread Length Code)
4-40	440	.187
6-32	632	.250
8-32	832	.375
10-32	1032	.375
12-24	1224	.375
1/4-24	2520	500

LENGTH

Length	L (Length Code) ±.005
3/32	.094
1/8	.125
5/32	.156
3/16	.187
7/32	.219
1/4	.250
9/32	.281
5/16	.312
11/32	.344
3/8	.375
13/32	.406
7/16	.437
15/32	.469
1/2	.500
17/32	.531
9/16	.562
19/32	.594
5/8	.625

Length	L (Length Code) ±.005
21/32	.656
11/16	.687
23/32	.719
3/4	.750
25/32	.781
13/16	.812
27/32	.844
7/8	.875
29/32	.906
15/16	.937
31/32	.969
1	1.000
1-1/16	1.062
1-1/8	1.125
1-3/16	1.187
1-1/4	1.250
1-5/16	1.312
1-3/8	1.375

Length	L (Length Code) ±.005
1-7/16	1.437
1-1/2	1.500
1-9/16	1.562
1-5/8	1.625
1-11/16	1.687
1-3/4	1.750
1-13/16	1.812
1-7/8	1.875
1-15/16	1.937
2	2.000
2-1/8	2.125
2-1/4	2.250
2-3/8	2.375
2-1/2	2.500
2-5/8	2.625
2-3/4	2.750
2-7/8	2.875
3	3.000

HMM 3/8 Hex Male-Male Standoffs

All dimensions in inches.
 Custom sizes, materials, and finishes available.

3/8 Hex Male-Male Standoffs

LENGTH (CONTINUED)

Length	L (Length) Code ±.005
3-1/4	3.250
3-1/2	3.500
3-3/4	3.750
4	4.000
4-1/4	4.250
4-1/2	4.500
4-3/4	4.750
5	5.000
5-1/4	5.250
5-1/2	5.500
5-3/4	5.750
6	6.000
6-1/4	6.250
6-1/2	6.500
6-3/4	6.750
7	7.000
7-1/4	7.250
7-1/2	7.500
7-3/4	7.750
8	8.000
8-1/4	8.250
8-1/2	8.500
8-3/4	8.750
9	9.000
9-1/4	9.250
9-1/2	9.500
9-3/4	9.750
10	10.000

MATERIAL

Material Code	Material Description
STL	Carbon Steel
SS	Stainless Steel
AL	Aluminum
BRS	Brass
NYVO	Nylon UL-94 V0
NYV2	Nylon UL-94-V2

FINISH

Finish Code	Finish Description
Z	Zinc with Clear Chromate
Z-BLK	Zinc with Black Chromate
Z-YEL	Zinc with Yellow Chromate
NI	Electroplated Bright Nickel
BLK-OX	Black Oxide
CF	Clear Chemical Film
CF-GOLD	Gold Chemical Film
P	Passivated
PLN	Plain
TIN	Electroplated Bright Tin
TIN-MATTE	Electroplated Matte Tin

HMM 3/8 Hex Male-Male Standoffs

All dimensions in inches.
Custom sizes, materials, and finishes available.

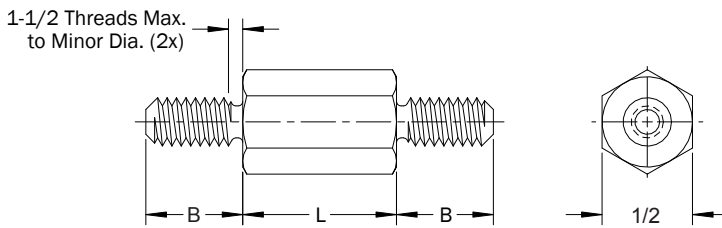
1/2 Hex Male-Male Standoffs

PART DESCRIPTION EXAMPLE

HMM1/2 X 1.750 — 2520 X .500 — STL — Z

T
T
T
T
T

Body Length Code Thread Code Thread Length Code Material Code Finish Code



THREAD

Thread	Thread Code	B (Thread Length Code)
6-32	632	.250
8-32	832	.375
10-32	1032	.375
12-24	1224	.375
1/4-20	2520	.500
5/16-18	3118	.500

LENGTH

Length	L (Length Code) ±.005
3/32	.094
1/8	.125
5/32	.156
3/16	.187
7/32	.219
1/4	.250
9/32	.281
5/16	.312
11/32	.344
3/8	.375
13/32	.406
7/16	.437
15/32	.469
1/2	.500
17/32	.531
9/16	.562
19/32	.594
5/8	.625

Length	L (Length Code) ±.005
21/32	.656
11/16	.687
23/32	.719
3/4	.750
25/32	.781
13/16	.812
27/32	.844
7/8	.875
29/32	.906
15/16	.937
31/32	.969
1	1.000
1-1/16	1.062
1-1/8	1.125
1-3/16	1.187
1-1/4	1.250
1-5/16	1.312
1-3/8	1.375

Length	L (Length Code) ±.005
1-7/16	1.437
1-1/2	1.500
1-9/16	1.562
1-5/8	1.625
1-11/16	1.687
1-3/4	1.750
1-13/16	1.812
1-7/8	1.875
1-15/16	1.937
2	2.000
2-1/8	2.125
2-1/4	2.250
2-3/8	2.375
2-1/2	2.500
2-5/8	2.625
2-3/4	2.750
2-7/8	2.875
3	3.000

HMM 1/2 Hex Male-Male Standoffs

All dimensions in inches.
Custom sizes, materials, and finishes available.

1/2 Hex Male-Male Standoffs

LENGTH (CONTINUED)

Length	L (Length) Code ±.005
3-1/4	3.250
3-1/2	3.500
3-3/4	3.750
4	4.000
4-1/4	4.250
4-1/2	4.500
4-3/4	4.750
5	5.000
5-1/4	5.250
5-1/2	5.500
5-3/4	5.750
6	6.000
6-1/4	6.250
6-1/2	6.500
6-3/4	6.750
7	7.000
7-1/4	7.250
7-1/2	7.500
7-3/4	7.750
8	8.000
8-1/4	8.250
8-1/2	8.500
8-3/4	8.750
9	9.000
9-1/4	9.250
9-1/2	9.500
9-3/4	9.750
10	10.000

MATERIAL

Material Code	Material Description
STL	Carbon Steel
SS	Stainless Steel
AL	Aluminum
BRS	Brass
NYVO	Nylon UL-94 V0
NYV2	Nylon UL-94-V2

FINISH

Finish Code	Finish Description
Z	Zinc with Clear Chromate
Z-BLK	Zinc with Black Chromate
Z-YEL	Zinc with Yellow Chromate
NI	Electroplated Bright Nickel
BLK-OX	Black Oxide
CF	Clear Chemical Film
CF-GOLD	Gold Chemical Film
P	Passivated
PLN	Plain
TIN	Electroplated Bright Tin
TIN-MATTE	Electroplated Matte Tin

HMM 1/2 Hex Male-Male Standoffs

All dimensions in inches.
Custom sizes, materials, and finishes available.

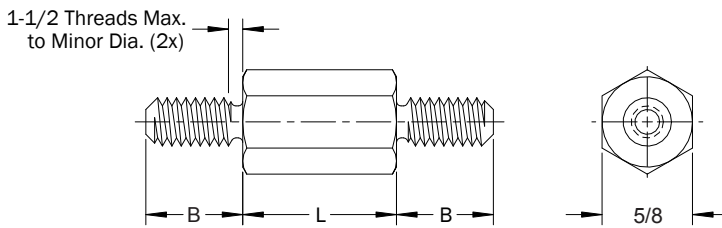
5/8 Hex Male-Male Standoffs

PART DESCRIPTION EXAMPLE

HMM5/8 X 2.000 — 3118 X .625 — STL — Z

T
T
T
T
T

Body Length Code Thread Code Thread Length Code Material Code Finish Code



THREAD

Thread	Thread Code	B (Thread Length Code)
8-32	832	.375
10-32	1032	.375
12-24	1224	.375
1/4-20	2520	.500
5/16-18	3118	.500
3/8-16	3716	.625
7/16-14	4314	.625

LENGTH

Length	L (Length Code) ±.005
3/32	.094
1/8	.125
5/32	.156
3/16	.187
7/32	.219
1/4	.250
9/32	.281
5/16	.312
11/32	.344
3/8	.375
13/32	.406
7/16	.437
15/32	.469
1/2	.500
17/32	.531
9/16	.562
19/32	.594

Length	L (Length Code) ±.005
5/8	.625
21/32	.656
11/16	.687
23/32	.719
3/4	.750
25/32	.781
13/16	.812
27/32	.844
7/8	.875
29/32	.906
15/16	.937
31/32	.969
1	1.000
1-1/16	1.062
1-1/8	1.125
1-3/16	1.187
1-1/4	1.250

Length	L (Length Code) ±.005
1-5/16	1.312
1-3/8	1.375
1-7/16	1.437
1-1/2	1.500
1-9/16	1.562
1-5/8	1.625
1-11/16	1.687
1-3/4	1.750
1-13/16	1.812
1-7/8	1.875
1-15/16	1.937
2	2.000
2-1/8	2.125
2-1/4	2.250
2-3/8	2.375
2-1/2	2.500
2-5/8	2.625

HMM 5/8 Hex Male-Male Standoffs

5/8 Hex Male-Male Standoffs

LENGTH (CONTINUED)

Length	L (Length) Code ±.005
2-3/4	2.750
2-7/8	2.875
3	3.000
3-1/4	3.250
3-1/2	3.500
3-3/4	3.750
4	4.000
4-1/4	4.250
4-1/2	4.500
4-3/4	4.750
5	5.000
5-1/4	5.250
5-1/2	5.500
5-3/4	5.750
6	6.000
6-1/4	6.250

Length	L (Length) Code ±.005
6-1/2	6.500
6-3/4	6.750
7	7.000
7-1/4	7.250
7-1/2	7.500
7-3/4	7.750
8	8.000
8-1/4	8.250
8-1/2	8.500
8-3/4	8.750
9	9.000
9-1/4	9.250
9-1/2	9.500
9-3/4	9.750
10	10.000

MATERIAL

Material Code	Material Description
STL	Carbon Steel
SS	Stainless Steel
AL	Aluminum
BRS	Brass
NYVO	Nylon UL-94 V0
NYV2	Nylon UL-94-V2

FINISH

Finish Code	Finish Description
Z	Zinc with Clear Chromate
Z-BLK	Zinc with Black Chromate
Z-YEL	Zinc with Yellow Chromate
NI	Electroplated Bright Nickel
BLK-OX	Black Oxide
CF	Clear Chemical Film
CF-GOLD	Gold Chemical Film
P	Passivated
PLN	Plain
TIN	Electroplated Bright Tin
TIN-MATTE	Electroplated Matte Tin

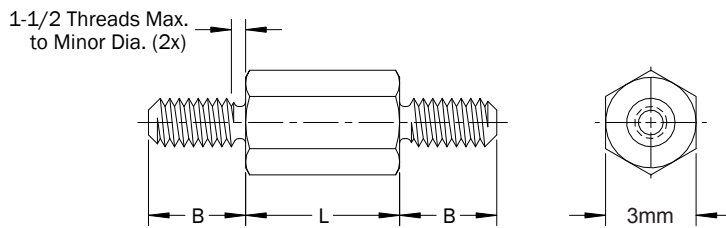
HMM 5/8 Hex Male-Male Standoffs

3mm Hex Male-Male Standoffs

PART DESCRIPTION EXAMPLE

HMM3 X 25.00 — M2 X 3.18 — STL — Z

Body Length Code Thread Code Thread Length Code Material Code Finish Code



THREAD

Thread	Thread Code	B (Thread Length Code)
M1 x 0.25	M1	1.59
M1.2 x 0.25	M1.2	1.98
M1.4 x 0.3	M1.4	2.38
M1.6 x 0.35	M1.6	2.54
M2 x 0.4	M2	3.18

LENGTH

Length	L (Length Code) ±0.13
3	3.00
4	4.00
5	5.00
6	6.00
7	7.00
8	8.00
9	9.00
10	10.00
11	11.00
12	12.00
13	13.00

Length	L (Length Code) ±0.13
14	14.00
15	15.00
16	16.00
17	17.00
18	18.00
19	19.00
20	20.00
21	21.00
22	22.00
23	23.00
24	24.00

Length	L (Length Code) ±0.13
25	25.00
28	28.00
31	31.00
34	34.00
37	37.00
40	40.00
43	43.00
46	46.00
49	49.00
52	52.00

HMM 3mm Hex Male-Male Standoffs

All dimensions in millimeters.
Custom sizes, materials, and finishes available.

3mm Hex Male-Male Standoffs

MATERIAL

Material Code	Material Description
STL	Carbon Steel
SS	Stainless Steel
AL	Aluminum
BRS	Brass
NYV0	Nylon UL-94 V0
NYV2	Nylon UL-94-V2

FINISH

Finish Code	Finish Description
Z	Zinc with Clear Chromate
Z-BLK	Zinc with Black Chromate
Z-YEL	Zinc with Yellow Chromate
NI	Electroplated Bright Nickel
BLK-OX	Black Oxide
CF	Clear Chemical Film
CF-GOLD	Gold Chemical Film
P	Passivated
PLN	Plain
TIN	Electroplated Bright Tin
TIN-MATTE	Electroplated Matte Tin

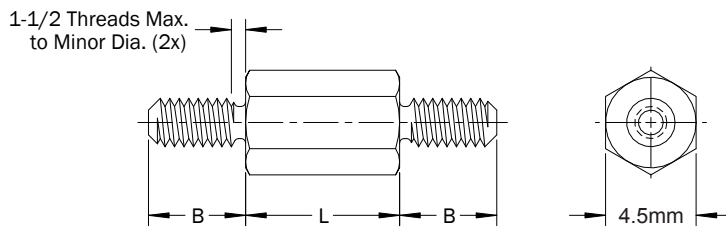
4.5mm Hex Male-Male Standoffs

PART DESCRIPTION EXAMPLE

HMM4.5 X 25.00 — M3 X 4.76 — STL — Z

T
T
T
T
T

Body Length Code
Thread Code
Thread Length Code
Material Code
Finish Code



THREAD

Thread	Thread Code	B (Thread Length Code)
M1.6 x 0.35	M1.6	2.54
M2 x 0.4	M2	3.18
M2.5 x 0.45	M2.5	3.97
M3 x 0.5	M3	4.76

LENGTH

Length	L (Length Code) ±0.13
3	3.00
4	4.00
5	5.00
6	6.00
7	7.00
8	8.00
9	9.00
10	10.00
11	11.00
12	12.00
13	13.00
14	14.00
15	15.00
16	16.00
17	17.00
18	18.00
19	19.00

Length	L (Length Code) ±0.13
20	20.00
21	21.00
22	22.00
23	23.00
24	24.00
25	25.00
28	28.00
31	31.00
34	34.00
37	37.00
40	40.00
43	43.00
46	46.00
49	49.00
52	52.00

HMM 4.5mm Hex Male-Male Standoffs

All dimensions in millimeters.
Custom sizes, materials, and finishes available.

4.5mm Hex Male-Male Standoffs

MATERIAL

Material Code	Material Description
STL	Carbon Steel
SS	Stainless Steel
AL	Aluminum
BRS	Brass
NYV0	Nylon UL-94 V0
NYV2	Nylon UL-94-V2

FINISH

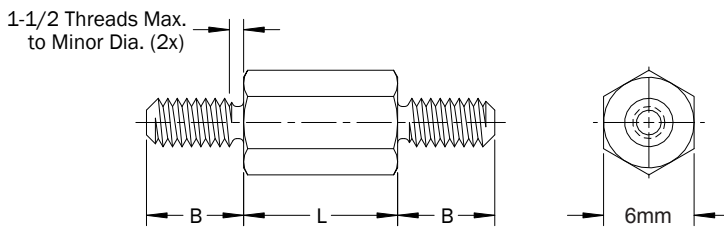
Finish Code	Finish Description
Z	Zinc with Clear Chromate
Z-BLK	Zinc with Black Chromate
Z-YEL	Zinc with Yellow Chromate
NI	Electroplated Bright Nickel
BLK-OX	Black Oxide
CF	Clear Chemical Film
CF-GOLD	Gold Chemical Film
P	Passivated
PLN	Plain
TIN	Electroplated Bright Tin
TIN-MATTE	Electroplated Matte Tin

6mm Hex Male-Male Standoffs

PART DESCRIPTION EXAMPLE

HMM6 X 25.00 — M3.5 X 6.35 — STL — Z

Body Length Code Thread Code Thread Length Code Material Code Finish Code



THREAD

Thread	Thread Code	B (Thread Length Code)
M2.5 x 0.45	M2.5	3.97
M3 x 0.5	M3	4.76
M3.5 x 0.6	M3.5	6.35
M4 x 0.7	M4	9.53

LENGTH

Length	L (Length Code) ±0.13
3	3.00
4	4.00
5	5.00
6	6.00
7	7.00
8	8.00
9	9.00
10	10.00
11	11.00
12	12.00
13	13.00
14	14.00
15	15.00
16	16.00
17	17.00
18	18.00

Length	L (Length Code) ±0.13
19	19.00
20	20.00
21	21.00
22	22.00
23	23.00
24	24.00
25	25.00
28	28.00
31	31.00
34	34.00
37	37.00
40	40.00
43	43.00
46	46.00
49	49.00
52	52.00

HMM 6mm Hex Male-Male Standoffs

All dimensions in millimeters.
Custom sizes, materials, and finishes available.

6mm Hex Male-Male Standoffs

MATERIAL

Material Code	Material Description
STL	Carbon Steel
SS	Stainless Steel
AL	Aluminum
BRS	Brass
NYV0	Nylon UL-94 V0
NYV2	Nylon UL-94-V2

FINISH

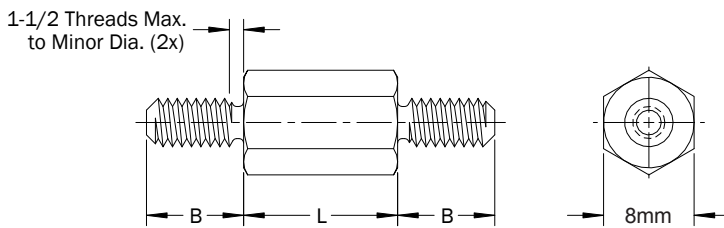
Finish Code	Finish Description
Z	Zinc with Clear Chromate
Z-BLK	Zinc with Black Chromate
Z-YEL	Zinc with Yellow Chromate
NI	Electroplated Bright Nickel
BLK-OX	Black Oxide
CF	Clear Chemical Film
CF-GOLD	Gold Chemical Film
P	Passivated
PLN	Plain
TIN	Electroplated Bright Tin
TIN-MATTE	Electroplated Matte Tin

8mm Hex Male-Male Standoffs

PART DESCRIPTION EXAMPLE

HMM8 X 25.00 — M4 X 9.53 — STL — Z

Body Length Code
 Thread Code
 Thread Length Code
 Material Code
 Finish Code



THREAD

Thread	Thread Code	B (Thread Length Code)
M3 x 0.5	M3	4.76
M3.5 x 0.6	M3.5	6.35
M4 x 0.7	M4	9.53
M5 x 0.8	M5	9.53

LENGTH

Length	L (Length Code) ±0.13
3	3.00
4	4.00
5	5.00
6	6.00
7	7.00
8	8.00
9	9.00
10	10.00
11	11.00
12	12.00
13	13.00
14	14.00
15	15.00
16	16.00
17	17.00
18	18.00

Length	L (Length Code) ±0.13
19	19.00
20	20.00
21	21.00
22	22.00
23	23.00
24	24.00
25	25.00
28	28.00
31	31.00
34	34.00
37	37.00
40	40.00
43	43.00
46	46.00
49	49.00
52	52.00

HMM 8mm Hex Male-Male Standoffs

All dimensions in millimeters.
 Custom sizes, materials, and finishes available.

8mm Hex Male-Male Standoffs

MATERIAL

Material Code	Material Description
STL	Carbon Steel
SS	Stainless Steel
AL	Aluminum
BRS	Brass
NYV0	Nylon UL-94 V0
NYV2	Nylon UL-94-V2

FINISH

Finish Code	Finish Description
Z	Zinc with Clear Chromate
Z-BLK	Zinc with Black Chromate
Z-YEL	Zinc with Yellow Chromate
NI	Electroplated Bright Nickel
BLK-OX	Black Oxide
CF	Clear Chemical Film
CF-GOLD	Gold Chemical Film
P	Passivated
PLN	Plain
TIN	Electroplated Bright Tin
TIN-MATTE	Electroplated Matte Tin

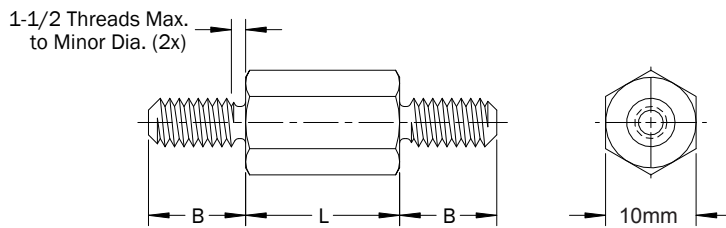
10mm Hex Male-Male Standoffs

PART DESCRIPTION EXAMPLE

HMM10 X 25.00 — M5 X 9.53 — STL — Z

T
T
T
T
T

Body Length Code
Thread Code
Thread Length Code
Material Code
Finish Code



THREAD

Thread	Thread Code	B (Thread Length Code)
M3 x 0.5	M3	4.76
M3.5 x 0.6	M3.5	6.35
M4 x 0.7	M4	9.53
M5 x 0.8	M5	9.53

LENGTH

Length	L (Length Code) ±0.13
3	3.00
4	4.00
5	5.00
6	6.00
7	7.00
8	8.00
9	9.00
10	10.00
11	11.00
12	12.00
13	13.00
14	14.00
15	15.00
16	16.00
17	17.00
18	18.00

Length	L (Length Code) ±0.13
19	19.00
20	20.00
21	21.00
22	22.00
23	23.00
24	24.00
25	25.00
28	28.00
31	31.00
34	34.00
37	37.00
40	40.00
43	43.00
46	46.00
49	49.00
52	52.00

HMM 10mm Hex Male-Male Standoffs

All dimensions in millimeters.
Custom sizes, materials, and finishes available.

10mm Hex Male-Male Standoffs

MATERIAL

Material Code	Material Description
STL	Carbon Steel
SS	Stainless Steel
AL	Aluminum
BRS	Brass
NYV0	Nylon UL-94 V0
NYV2	Nylon UL-94-V2

FINISH

Finish Code	Finish Description
Z	Zinc with Clear Chromate
Z-BLK	Zinc with Black Chromate
Z-YEL	Zinc with Yellow Chromate
NI	Electroplated Bright Nickel
BLK-OX	Black Oxide
CF	Clear Chemical Film
CF-GOLD	Gold Chemical Film
P	Passivated
PLN	Plain
TIN	Electroplated Bright Tin
TIN-MATTE	Electroplated Matte Tin

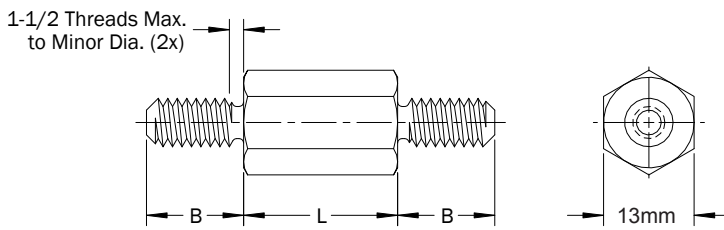
13mm Hex Male-Male Standoffs

PART DESCRIPTION EXAMPLE

HMM13 X 25.00 — M6 X 12.70 — STL — Z

T
T
T
T
T

Body Length Code
Thread Code
Thread Length Code
Material Code
Finish Code



THREAD

Thread	Thread Code	B (Thread Length Code)
M4 x 0.7	M4	9.53
M5 x 0.8	M5	9.53
M6 x 1.0	M6	12.70
M8 x 1.25	M8	12.70

LENGTH

Length	L (Length Code) ±0.13
3	3.00
4	4.00
5	5.00
6	6.00
7	7.00
8	8.00
9	9.00
10	10.00
11	11.00
12	12.00
13	13.00
14	14.00
15	15.00
16	16.00
17	17.00
18	18.00

Length	L (Length Code) ±0.13
19	19.00
20	20.00
21	21.00
22	22.00
23	23.00
24	24.00
25	25.00
28	28.00
31	31.00
34	34.00
37	37.00
40	40.00
43	43.00
46	46.00
49	49.00
52	52.00

HMM 13mm Hex Male-Male Standoffs

All dimensions in millimeters.
Custom sizes, materials, and finishes available.

13mm Hex Male-Male Standoffs

MATERIAL

Material Code	Material Description
STL	Carbon Steel
SS	Stainless Steel
AL	Aluminum
BRS	Brass
NYV0	Nylon UL-94 V0
NYV2	Nylon UL-94-V2

FINISH

Finish Code	Finish Description
Z	Zinc with Clear Chromate
Z-BLK	Zinc with Black Chromate
Z-YEL	Zinc with Yellow Chromate
NI	Electroplated Bright Nickel
BLK-OX	Black Oxide
CF	Clear Chemical Film
CF-GOLD	Gold Chemical Film
P	Passivated
PLN	Plain
TIN	Electroplated Bright Tin
TIN-MATTE	Electroplated Matte Tin