

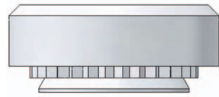
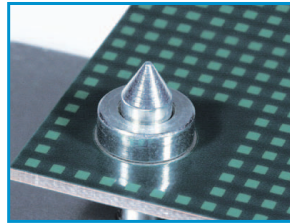


GR

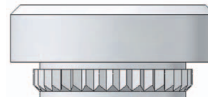
Guide Pin Receptacle Nut

FEATURES

- Precise fit with Pencom's GA, GB, GF, GN & GP guide pins.
- Helps maintain parallelism between mating surfaces during assembly.
- Permanent installation in aluminum, carbon steel, stainless steel and fiberglass (pcb) sheets.
- Choice of RoHS compliant materials and finishes.



GRA self-clinching style for installation in aluminum, carbon steel and stainless steel sheets



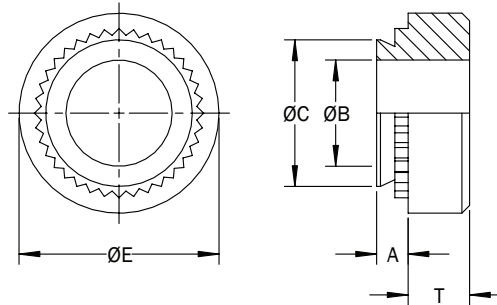
GRB broaching style for installation in pcb and soft metal sheets

PART DESCRIPTION EXAMPLE- GRA

GRA ST — M3 — 0.77 — Z

Style Code Guide Pin Size Shank Length Finish Code

Material Code



GENERAL- GRA

Guide Pin Size	Sheet			A Shank Max.	ØB +0.08 -0.00	ØC Max.	ØE ±0.25	T ±0.25
	Minimum Thickness	Hole Size +0.08 -0.00	Minimum Distance Hole Center To Edge					
M3	0.80	4.22	4.8	0.77	3.03	4.19	6.35	1.78
	1.00			0.97				
	1.40			1.38				
M4	0.80	5.41	6.9	0.77	4.02	5.38	7.92	2.29
	1.00			0.97				
	1.40			1.38				
M5	0.80	6.35	7.1	0.77	5.01	6.33	8.74	2.29
	1.00			0.97				
	1.40			1.38				
M6	0.80	8.75	8.6	0.77	6.00	8.72	11.10	4.32
	1.00			0.97				
	1.40			1.38				

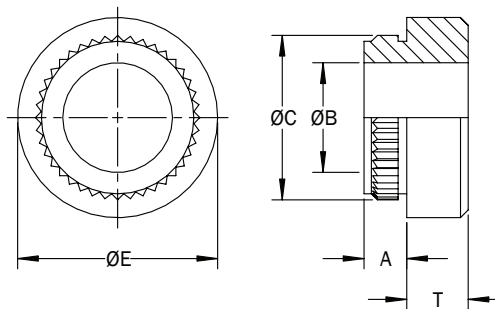
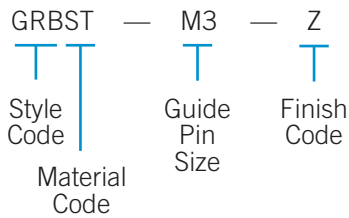
All dimensions in millimeters

GR Guide Pin Receptacle Nut

MATERIAL & FINISH-GR A

Material Code	Material Description	Finish Code	Finish Description	For Use in Sheet Hardness		
				HRB 70 Max.	HRB 80 Max.	HRB 90 Max.
ST	Heat-treated Carbon Steel	Z	Zinc (SC1) with Type III Clear Chromate per ASTM B 633		•	
SS	300-Series Stainless Steel	P	Passivate and/or test per ASTM A 967	•		
S4	Heat-treated Stainless Steel	P	Passivate and/or test per ASTM A 967			•

PART DESCRIPTION EXAMPLE-GRB



GENERAL-GRB

Guide Pin Size	Sheet			A Shank Max.	ØB +0.08 -0.00	ØC ±0.08	ØE ±0.25	T ±0.25
	Minimum Thickness	Hole Size ¹ +0.08 -0.00	Minimum Distance Hole Center To Edge					
M3	1.53	4.22	4.4	1.53	3.03	4.68	5.56	1.65
M4	1.53	6.35	6.4	1.53	4.02	6.86	8.74	2.44
M5	1.53	6.91	7.1	1.53	5.01	7.37	9.53	3.23
M6	1.53	8.74	8.6	1.53	6.00	9.20	11.10	4.32

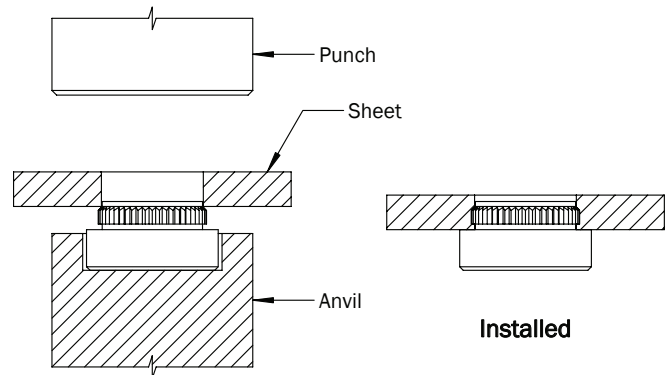
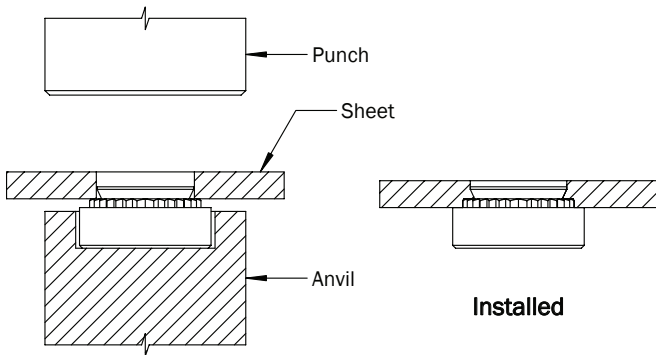
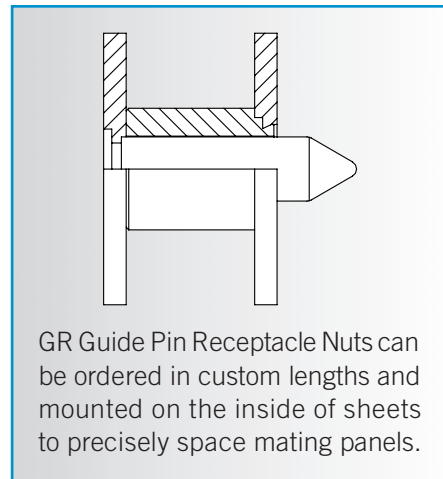
(1) The GRB is intended for use in unplated holes. A hole tolerance of +0.13/-0.03 should be used with plated holes. All dimensions in millimeters

MATERIAL & FINISH-GRB

Material Code	Material Description	Finish Code	Finish Description	For Use in Sheet Hardness	
				HRB 60 Max.	PCB
ST	Carbon Steel	Z	Zinc (SC1) with Type III Clear Chromate per ASTM B 633	•	•
SS	300-Series Stainless Steel	P	Passivate and/or test per ASTM A 967	•	•

INSTALLATION

1. Punch or drill hole in sheet. Do not deburr edges.
2. Place guide pin receptacle nut into the anvil hole and locate sheet hole over the guide pin receptacle nut shank as shown. Ensure that the receptacle nut is installed in the punch side of the sheet.
3. Squeeze the sheet and guide pin receptacle nut between parallel punch and anvil surfaces. Use only enough pressure to seat the receptacle nut shoulder flush with the sheet. Overinstallation may damage the receptacle nut and prevent use with guide pin. Pencom recommends checking the nut inside diameter with a pin gauge after installation.

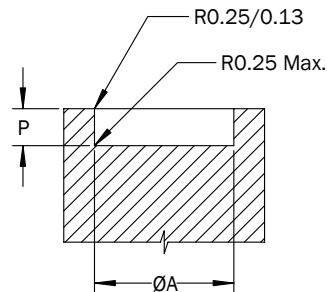


ANVIL DIMENSIONS—GRAS4

Guide Pin Size	$\varnothing A$ ± 0.05	P $+0.00$ -0.03
M3	6.48	1.63
M4	8.05	2.08
M5	8.84	2.08
M6	11.25	4.14

All dimensions in millimeters

Pencom recommends an anvil configuration to these dimensions when installing the GRAS4 to improve installation and reduce sheet distortion.



GR Guide Pin Receptacle Nut

This information may be updated periodically. Contact Pencom for current information or see www.pencomsf.com