

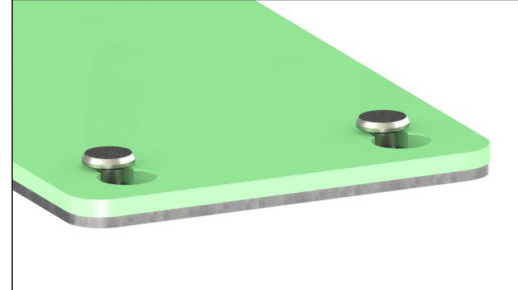


# TS

## Self-clinching Sheet-Loc™ Fastener

### FEATURES

- Join two sheets together by simply sliding the top panel into place for a quick attachment and detachment of removable components.
- Use several TJ Sheet-Loc™ Fasteners with one PENCOM NG Flush Nut to prevent unwanted top sheet movement, and reduce installation time and excess hardware.
- Can be installed in a blind hole to conceal fastener head.



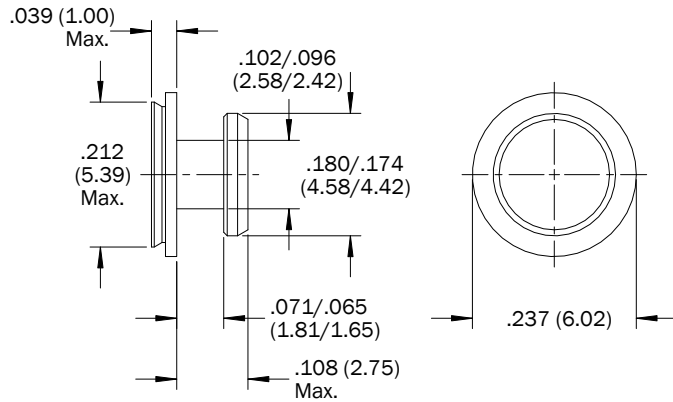
### PART DESCRIPTION

TSSS — .060 — FR — P

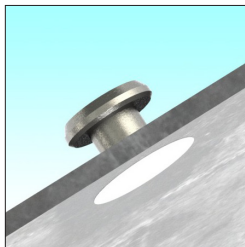
### MATERIAL AND FINISH

300-Series Stainless Steel/ Passivated and/or Tested per ASTM A 967.

*(Other RoHS-compliant materials and finishes available by request.)*



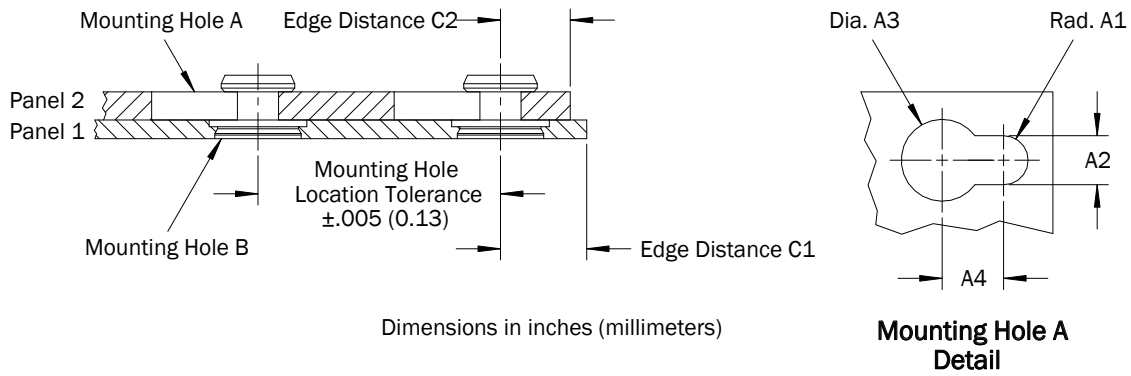
Dimensions without tolerances are reference  
Dimensions in inches (millimeters)



*Self-clinching design installs quickly and permanently into an aluminum or carbon steel bottom sheet with a flush or sub-flush appearance on the back. Fastener head may be concealed by installing in a blind hole.*

TS Self-clinching Sheet-Loc™ Fastener

### APPLICATION



All dimensions in inches

INCH	Panel 1				Panel 2						
	Mounting Hole B +.003 -.000	Sheet Hardness Max.	Sheet Thickness Min.	Edge Distance C1 Min.	Mounting Hole A				Material	Thickness	Edge Distance C2 Min.
					A1 Nom.	A2 ±.003	A3 ±.003	A4 Min.			
	.213	HRB 70	.039 (1)	.150	.059	.118	.197	.148	Metal or P.C. Board	.057 – .064	.160

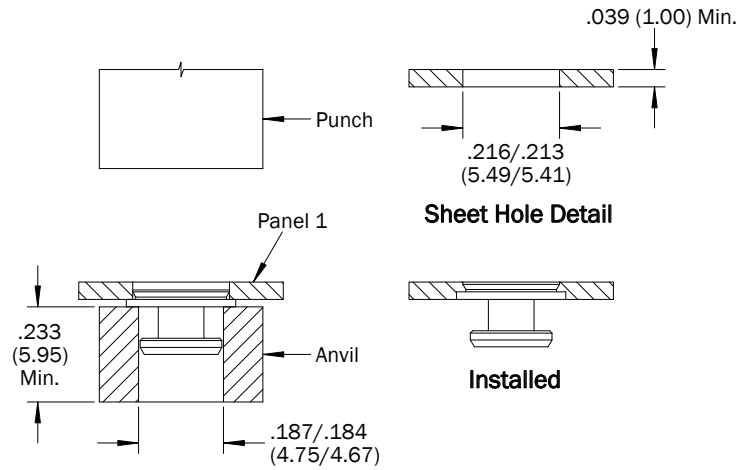
All dimensions in millimeters

METRIC	Panel 1				Panel 2						
	Mounting Hole B +0.08 -0.00	Sheet Hardness Max.	Sheet Thickness Min.	Edge Distance C1 Min.	Mounting Hole A				Material	Thickness	Edge Distance C2 Min.
					A1 Nom.	A2 ±0.08	A3 ±0.08	A4 Min.			
	5.41	HRB 70	1.00 (1)	3.81	1.50	3.00	5.00	3.75	Metal or P.C. Board	1.45 – 1.62	4.10

(1) For blind hole installation, mount in a .043" (1.10mm) deep blind hole milled in a .062" (1.60mm) minimum thick sheet.

### THRU-HOLE INSTALLATION

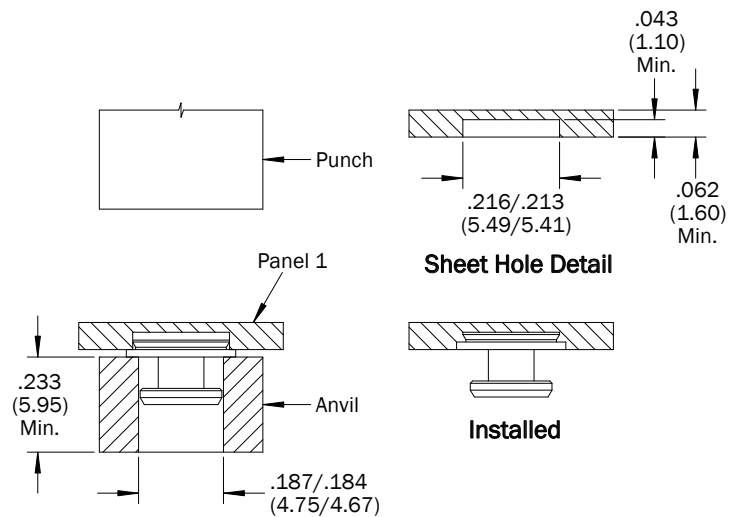
1. For a thru-hole application punch or drill hole in sheet. Do not deburr edges.
2. Insert fastener into the anvil and locate sheet hole over the fastener shank as shown.
3. Squeeze the sheet and fastener flange between parallel punch and anvil surfaces. Use only enough pressure to seat the flange flush with the sheet. Punch and anvil may be ordered using PENCOM part numbers TL1287 and TL1363, respectively, or made from hardened tool steel.



**Thru-Hole Installation**  
Dimensions in inches (millimeters)

### BLIND HOLE INSTALLATION

1. For a blind hole application mill a properly sized blind hole  $.043$ " (1.10mm) deep minimum in sheet. Do not deburr edges.
2. Insert fastener into the anvil and locate sheet hole over the fastener shank as shown.
3. Squeeze the sheet and fastener flange between parallel punch and anvil surfaces. Use only enough pressure to seat the flange flush with the sheet. Punch and anvil may be ordered using PENCOM part numbers TL1287 and TL1363, respectively, or made from hardened tool steel.

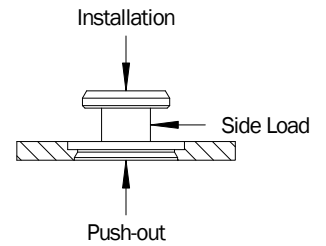


**Blind Hole Installation**  
Dimensions in inches (millimeters)

TS Self-clinching Sheet-Loc™ Fastener

## PERFORMANCE

INCH	Test Sheet Material					
	.060" 5052-H34 Aluminum			.060" Cold-Rolled Steel		
	Installation (lbs)	Push-out (lbs)	Side Load Max. (lbs)	Installation (lbs)	Push-out (lbs)	Side Load Max. (lbs)
	1100	120	120	2100	160	185



METRIC	Test Sheet Material					
	1.52mm 5052-H34 Aluminum			1.52mm Cold-Rolled Steel		
	Installation (kN)	Push-out (N)	Side Load Max. (N)	Installation (kN)	Push-out (N)	Side Load Max. (N)
	4.9	533	533	9.3	711	822

(1) Performance data represents the average destructive result when all installation specifications are strictly followed. Variations in sheet hole size, thickness, material and installation method will affect the loads. PENCOM strongly encourages testing in the application.