

Surface-Mount Key-Loc™ Standoffs

FEATURES

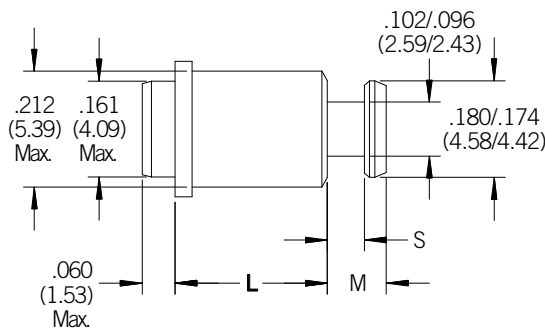
- Join two sheets together by sliding the top panel into place to precisely space removeable components.
- Install on p.c. boards at the same time and method as other surface-mount technology (SMT) components.
- Use several TJU Standoffs with one standard threaded standoff (such as the TCU) to prevent unwanted top panel movement, and reduce installation time and excessive hardware.
- Packaged on tape and reel consistent with standard automated SMT installation equipment.



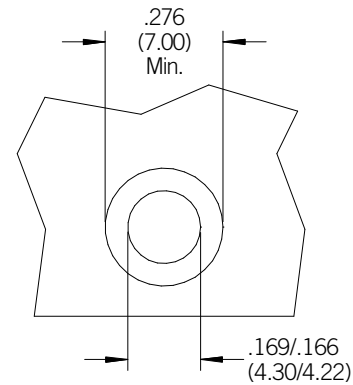
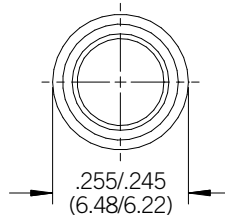
PART DESCRIPTION EXAMPLE

TJUST - .060 - .250 - TIN - MATTE

Top Panel Thickness Code Length



Dimensions in inches (millimeters)



Solder Pad
(Thru-plating not required in panel hole)

MATERIAL AND FINISH

Carbon Steel with Electroplated Matte Tin per ASTM B545, Class A with Clear Preservative Coating, Annealed.

TJU Surface-Mount Key-Loc™ Standoffs

GENERAL

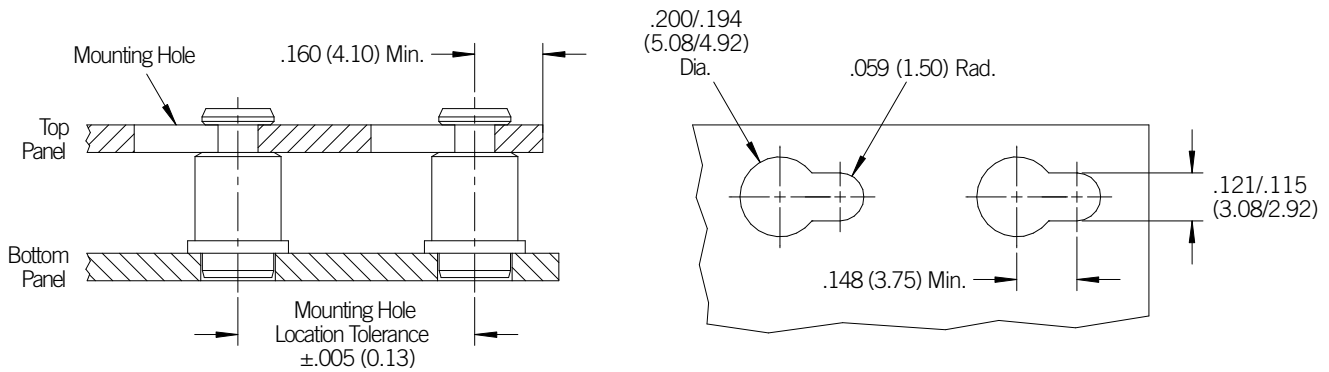
All dimensions in inches

INCH	Top Panel			Bottom Panel			S	M Maximum
	Thickness Code	Thickness	Material	Minimum Thickness	Material	Hole Diameter		
	.060	.057-.064	Any	.060	P.C. Board	.166-.169	.065-.071	.108
	.090	.087-.094	Any	.060	P.C. Board	.166-.169	.095-.101	.138

All dimensions in millimeters

METRIC	Top Panel			Bottom Panel			S	M Maximum
	Thickness Code	Thickness	Material	Minimum Thickness	Material	Hole Diameter		
	1.52	1.45-1.62	Any	1.53	P.C. Board	4.22-4.30	1.65-1.81	2.75
	2.29	2.22-2.39	Any	1.53	P.C. Board	4.22-4.30	2.41-2.57	3.51

APPLICATION



Top Panel Mounting Hole Detail

Dimensions in inches (millimeters)

TJU Surface-Mount Key-Loc™ Standoffs

LENGTH All dimensions in inches

INCH	L (Length) ±.005		
	.125	.250	.375

All dimensions in millimeters

METRIC	L (Length) ±0.13				
	3	4	6	8	10

REEL DATA All dimensions in inches

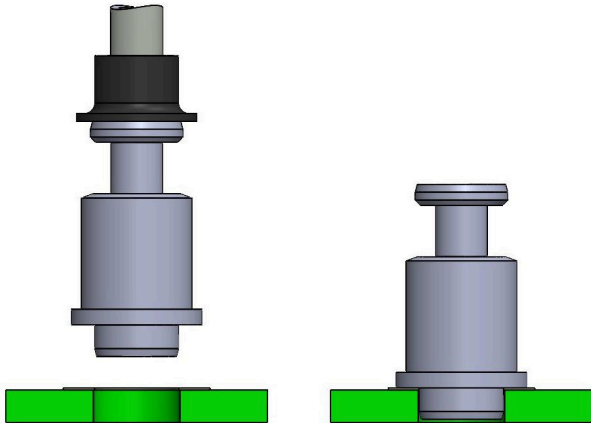
INCH	Length		
	.125	.250	.375
	Parts per Reel / Pitch		
	630 / .472	300 / .630	230 / .630

All dimensions in millimeters

METRIC	Length				
	3	4	6	8	10
	Parts per Reel / Pitch				
	640 / 12	540 / 12	300 / 16	260 / 16	220 / 16

(1) Parts packaged on .945" (24mm) wide tape on 13" (330mm) recyclable reels conforming to EIA-481.

INSTALLATION



Apply solder paste to p.c. board pad. Install fastener by gripping end and soldering in place using surface-mount (SMT) practices.

PERFORMANCE

Bottom Panel	
Test Sheet Material	Push-out
.062" (1.57mm) FR-4	113 lbs (500 N)

(1) Performance information is based on reported industry values and for reference purposes only. Actual performance may vary depending on conditions such as solder type, pad thickness and pattern. PENCOM strongly encourages testing in the application.

TJU Surface-Mount Key-Loc™ Standoffs