

## TE - Standoff

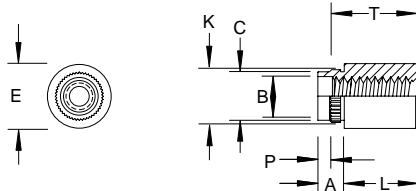
Broaching, Swage-In

Inch

Sample Part Number

TEST - 440 - .250 - Z

Series/ Thread Length Finish  
Material Code

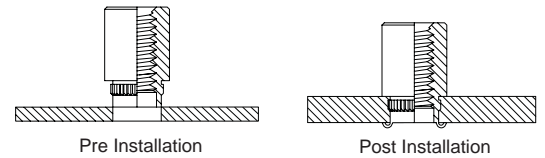


Thread	Thread Code	A MAX	Sheet Thickness	Hole Size in Sheet +.005/-0.01	B ±.003	C MAX	E ±.005	K ±.003	P ±.010	Dist. Hole C/L to Edge MIN
4 - 40	440	.09	.050-.065	.166	.122	.165	.220	.179	.040	.17
6 - 32	632	.09	.050-.065	.213	.171	.212	.280	.226	.040	.22

Material	Description	Finish	Description
ST	Carbon Steel	TIN	Tin
SS	300 Series Stainless Steel	P	Passivate
AL	Aluminum	PLN	Plain
BR	Brass	TIN	Tin

Custom sizes available.

(T) Thread Length MIN	Full							.375 ± .01	.375 Blind	
(L) Length ±.005	.062	.125	.187	.250	.312	.375	.500	.625	.750	1.000



All Dimensions are in Inches

## TE - Standoff

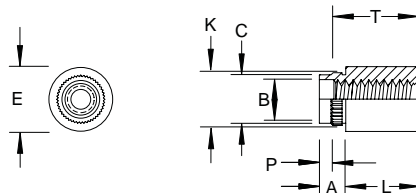
Broaching, Swage-In

Metric

Sample Part Number

TEST - M3 - 14 - Z

Series/ Thread Length Finish  
Material Code



Thread	Thread Code	A MAX	Sheet Thickness	Hole Size in Sheet +0.13/-0.03	B ±0.08	C MAX	E ±0.13	K ±0.08	P ±0.25	Dist. Hole C/L to Edge MIN
M3 x 0.5	M3	2.29	1.27-1.65	4.22	3.23	4.2	5.56	4.55	1	4.33
M4 x 0.7	M4	2.29	1.27-1.65	6.4	5.23	6.33	8.74	6.68	1	6.36

Material	Description	Finish	Description
ST	Carbon Steel	TIN	Tin
SS	300 Series Stainless Steel	P	Passivate
AL	Aluminum	PLN	Plain
BR	Brass	TIN	Tin

Custom sizes available.

(T) Thread Length (mm) MIN	Full							9.5 ± 0.4
(L) Length (mm) ±.005	2	4	6	8	10	12	14	16

