

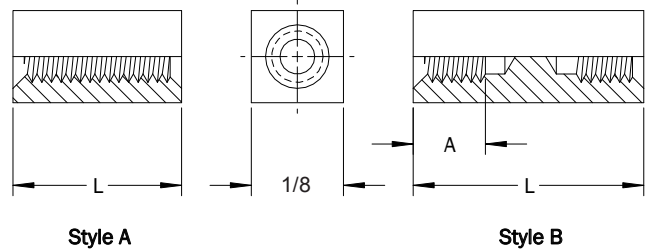
1/8 Square Female-Female Standoffs

PART DESCRIPTION EXAMPLE

SST1/8 — 256 X .500 — STL — Z

T
T
T
T

Thread Code Length Code Material Code Finish Code



THREAD

Thread	Thread Code	A Min.
0-80	080	.187
2-56	256	.187

STYLE

Thread	Material Code			
	STL, AL, BRS, NYV0, NYV2		SS	
	Style A	Style B	Style A	Style B
	Length			
0-80	Thru 3/8	Over 3/8	Thru 1/4	Over 1/4
2-56	Thru 3/4	Over 3/4	Thru 5/8	Over 5/8

(1) Thread depths may be reduced for shorter standoff lengths.

LENGTH

Length	L (Length Code) ±.005
3/32	.094
1/8	.187
5/32	.156
3/16	.187
7/32	.219
1/4	.250
9/32	.281
5/16	.312
11/32	.344
3/8	.375
13/32	.406
7/16	.437
15/32	.469
1/2	.500
17/32	.531
9/16	.562
19/32	.594

Length	L (Length Code) ±.005
5/8	.625
21/32	.656
11/16	.687
23/32	.719
3/4	.750
25/32	.781
13/16	.812
27/32	.844
7/8	.875
29/32	.906
15/16	.937
31/32	.969
1	1.000
1-1/16	1.062
1-1/8	1.125
1-3/16	1.187
1-1/4	1.250

Length	L (Length Code) ±.005
1-5/16	1.312
1-3/8	1.375
1-7/16	1.437
1-1/2	1.500
1-9/16	1.562
1-5/8	1.625
1-11/16	1.687
1-3/4	1.750
1-13/16	1.812
1-7/8	1.875
1-15/16	1.937
2	2.000

All dimensions in inches.
Custom sizes, materials, and finishes available

SST 1/8 Square Female-Female Standoffs

1/8 Square Female-Female Standoffs

MATERIAL

Material Code	Material Description
STL	Carbon Steel
SS	Stainless Steel
AL	Aluminum
BRS	Brass
NYVO	Nylon UL-94 V0
NYV2	Nylon UL-94-V2

FINISH

Finish Code	Finish Description
Z	Zinc with Clear Chromate
Z-BLK	Zinc with Black Chromate
Z-YEL	Zinc with Yellow Chromate
NI	Electroplated Bright Nickel
BLK-OX	Black Oxide
CF	Clear Chemical Film
CF-GOLD	Gold Chemical Film
P	Passivated
PLN	Plain
TIN	Electroplated Bright Tin
TIN-MATTE	Electroplated Matte Tin

SST 1/8 Square Female-Female Standoffs

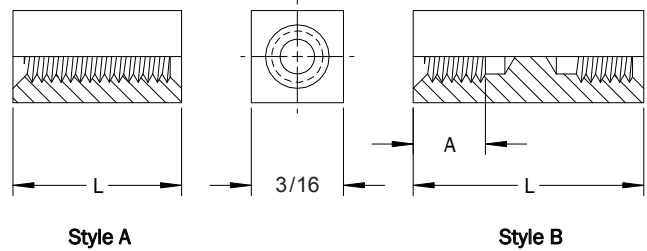
3/16 Square Female-Female Standoffs

PART DESCRIPTION EXAMPLE

SST3/16 — 440 X .750 — STL — Z

T
T
T
T

Thread Code
Length Code
Material Code
Finish Code



THREAD

Thread	Thread Code	A Min.
2-56	256	.187
4-40	440	.250
6-32	632	.375

STYLE

Thread	Material Code			
	STL, AL, BRS, NYV0, NYV2		SS	
	Style A	Style B	Style A	Style B
	Length			
2-56	Thru 3/4	Over 3/4	Thru 5/8	Over 5/8
4-40	Thru 1	Over 1	Thru 3/4	Over 3/4
6-32	Thru 1	Over 1	Thru 1	Over 1

(1) Thread depths may be reduced for shorter standoff lengths.

LENGTH

Length	L (Length Code) ±.005
3/32	.094
1/8	.187
5/32	.156
3/16	.187
7/32	.219
1/4	.250
9/32	.281
5/16	.312
11/32	.344
3/8	.375
13/32	.406
7/16	.437
15/32	.469
1/2	.500
17/32	.531
9/16	.562
19/32	.594

Length	L (Length Code) ±.005
5/8	.625
21/32	.656
11/16	.687
23/32	.719
3/4	.750
25/32	.781
13/16	.812
27/32	.844
7/8	.875
29/32	.906
15/16	.937
31/32	.969
1	1.000
1-1/16	1.062
1-1/8	1.125
1-3/16	1.187
1-1/4	1.250

Length	L (Length Code) ±.005
1-5/16	1.312
1-3/8	1.375
1-7/16	1.437
1-1/2	1.500
1-9/16	1.562
1-5/8	1.625
1-11/16	1.687
1-3/4	1.750
1-13/16	1.812
1-7/8	1.875
1-15/16	1.937
2	2.000
2-1/16	2.062
2-1/8	2.125
2-3/16	2.187
2-1/4	2.250
2-5/16	2.312

Length	L (Length Code) ±.005
2-3/8	2.375
2-7/16	2.437
2-1/2	2.500
2-9/16	2.562
2-5/8	2.625
2-11/16	2.687
2-3/4	2.750
2-13/16	2.812
2-7/8	2.875
2-15/16	2.937
3	3.000

All dimensions in inches.
Custom sizes, materials, and finishes available

SST 3/16 Square Female-Female Standoffs

3/16 Square Female-Female Standoffs

MATERIAL

Material Code	Material Description
STL	Carbon Steel
SS	Stainless Steel
AL	Aluminum
BRS	Brass
NYVO	Nylon UL-94 V0
NYV2	Nylon UL-94-V2

FINISH

Finish Code	Finish Description
Z	Zinc with Clear Chromate
Z-BLK	Zinc with Black Chromate
Z-YEL	Zinc with Yellow Chromate
NI	Electroplated Bright Nickel
BLK-OX	Black Oxide
CF	Clear Chemical Film
CF-GOLD	Gold Chemical Film
P	Passivated
PLN	Plain
TIN	Electroplated Bright Tin
TIN-MATTE	Electroplated Matte Tin

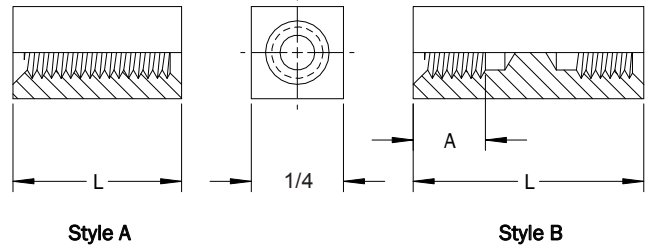
SST 3/16 Square Female-Female Standoffs

All dimensions in inches.
 Custom sizes, materials, and finishes available

1/4 Square Female-Female Standoffs

PART DESCRIPTION EXAMPLE

SST1/4 — 632 X 1.000 — STL — Z
T T T T
Thread Length Material Finish
Code Code Code Code



THREAD

Thread	Thread Code	A Min.
4-40	440	.250
6-32	632	.375
8-32	832	.437
10-32	1032	.500

STYLE

Thread	Material Code			
	STL, AL, BRS, NYV0, NYV2		SS	
	Style A	Style B	Style A	Style B
Length				
4-40	Thru 1	Over 1	Thru 3/4	Over 3/4
6-32	Thru 1	Over 1	Thru 1	Over 1
8-32	Thru 1	Over 1	Thru 1	Over 1
10-32	Thru 1-1/8	Over 1-1/8	Thru 1	Over 1

(1) Thread depths may be reduced for shorter standoff lengths.

LENGTH

Length	L (Length Code) ±.005
3/32	.094
1/8	.187
5/32	.156
3/16	.187
7/32	.219
1/4	.250
9/32	.281
5/16	.312
11/32	.344
3/8	.375
13/32	.406
7/16	.437
15/32	.469
1/2	.500
17/32	.531
9/16	.562

Length	L (Length Code) ±.005
19/32	.594
5/8	.625
21/32	.656
11/16	.687
23/32	.719
3/4	.750
25/32	.781
13/16	.812
27/32	.844
7/8	.875
29/32	.906
15/16	.937
31/32	.969
1	1.000
1-1/16	1.062
1-1/8	1.125

Length	L (Length Code) ±.005
1-3/16	1.187
1-1/4	1.250
1-5/16	1.312
1-3/8	1.375
1-7/16	1.437
1-1/2	1.500
1-9/16	1.562
1-5/8	1.625
1-11/16	1.687
1-3/4	1.750
1-13/16	1.812
1-7/8	1.875
1-15/16	1.937
2	2.000
2-1/8	2.125
2-1/4	2.250

Length	L (Length Code) ±.005
2-3/8	2.375
2-1/2	2.500
2-5/8	2.625
2-3/4	2.750
2-7/8	2.875
3	3.000
3-1/4	3.250
3-1/2	3.500
3-3/4	3.750
4	4.000
4-1/4	4.250
4-1/2	4.500
4-3/4	4.750
5	5.000
5-1/4	5.250
5-1/2	5.500

All dimensions in inches.
 Custom sizes, materials, and finishes available

SST 1/4 Square Female-Female Standoffs

1/4 Square Female-Female Standoffs

LENGTH (CONTINUED)

Length	L (Length) Code ±.005
5-3/4	5.750
6	6.000
6-1/4	6.250
6-1/2	6.500
6-3/4	6.750
7	7.000
7-1/4	7.250
7-1/2	7.500
7-3/4	7.750
8	8.000
8-1/4	8.250
8-1/2	8.500
8-3/4	8.750
9	9.000
9-1/4	9.250
9-1/2	9.500
9-3/4	9.750
10	10.000

MATERIAL

Material Code	Material Description
STL	Carbon Steel
SS	Stainless Steel
AL	Aluminum
BRS	Brass
NYVO	Nylon UL-94 V0
NYV2	Nylon UL-94-V2

FINISH

Finish Code	Finish Description
Z	Zinc with Clear Chromate
Z-BLK	Zinc with Black Chromate
Z-YEL	Zinc with Yellow Chromate
NI	Electroplated Bright Nickel
BLK-OX	Black Oxide
CF	Clear Chemical Film
CF-GOLD	Gold Chemical Film
P	Passivated
PLN	Plain
TIN	Electroplated Bright Tin
TIN-MATTE	Electroplated Matte Tin

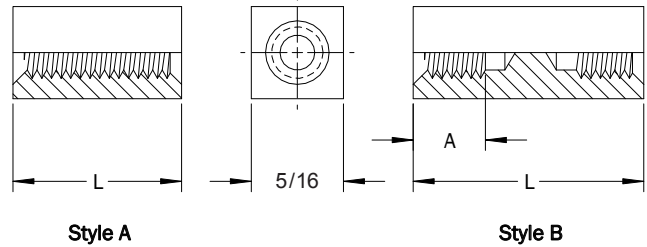
SST 1/4 Square Female-Female Standoffs

All dimensions in inches.
Custom sizes, materials, and finishes available

5/16 Square Female-Female Standoffs

PART DESCRIPTION EXAMPLE

SST5/16 — 832 X 1.250 — STL — Z
 T T T T
 Thread Code Length Code Material Code Finish Code



THREAD

Thread	Thread Code	A Min.
4-40	440	.250
6-32	632	.375
8-32	832	.437
10-32	1032	.500

STYLE

Thread	Material Code			
	STL, AL, BRS, NYV0, NYV2		SS	
	Style A	Style B	Style A	Style B
Length				
4-40	Thru 1	Over 1	Thru 3/4	Over 3/4
6-32	Thru 1	Over 1	Thru 1	Over 1
8-32	Thru 1	Over 1	Thru 1	Over 1
10-32	Thru 1-1/8	Over 1-1/8	Thru 1	Over 1

(1) Thread depths may be reduced for shorter standoff lengths.

LENGTH

Length	L (Length Code) ±.005
3/32	.094
1/8	.187
5/32	.156
3/16	.187
7/32	.219
1/4	.250
9/32	.281
5/16	.312
11/32	.344
3/8	.375
13/32	.406
7/16	.437
15/32	.469
1/2	.500
17/32	.531
9/16	.562

Length	L (Length Code) ±.005
19/32	.594
5/8	.625
21/32	.656
11/16	.687
23/32	.719
3/4	.750
25/32	.781
13/16	.812
27/32	.844
7/8	.875
29/32	.906
15/16	.937
31/32	.969
1	1.000
1-1/16	1.062
1-1/8	1.125

Length	L (Length Code) ±.005
1-3/16	1.187
1-1/4	1.250
1-5/16	1.312
1-3/8	1.375
1-7/16	1.437
1-1/2	1.500
1-9/16	1.562
1-5/8	1.625
1-11/16	1.687
1-3/4	1.750
1-13/16	1.812
1-7/8	1.875
1-15/16	1.937
2	2.000
2-1/8	2.125
2-1/4	2.250

Length	L (Length Code) ±.005
2-3/8	2.375
2-1/2	2.500
2-5/8	2.625
2-3/4	2.750
2-7/8	2.875
3	3.000
3-1/4	3.250
3-1/2	3.500
3-3/4	3.750
4	4.000
4-1/4	4.250
4-1/2	4.500
4-3/4	4.750
5	5.000
5-1/4	5.250
5-1/2	5.500

All dimensions in inches.
 Custom sizes, materials, and finishes available

SST 5/16 Square Female-Female Standoffs

5/16 Square Female-Female Standoffs

LENGTH (CONTINUED)

Length	L (Length Code) ±.005
5-3/4	5.750
6	6.000
6-1/4	6.250
6-1/2	6.500
6-3/4	6.750
7	7.000
7-1/4	7.250
7-1/2	7.500
7-3/4	7.750
8	8.000
8-1/4	8.250
8-1/2	8.500
8-3/4	8.750
9	9.000
9-1/4	9.250
9-1/2	9.500
9-3/4	9.750
10	10.000

MATERIAL

Material Code	Material Description
STL	Carbon Steel
SS	Stainless Steel
AL	Aluminum
BRS	Brass
NYVO	Nylon UL-94 V0
NYV2	Nylon UL-94-V2

FINISH

Finish Code	Finish Description
Z	Zinc with Clear Chromate
Z-BLK	Zinc with Black Chromate
Z-YEL	Zinc with Yellow Chromate
NI	Electroplated Bright Nickel
BLK-OX	Black Oxide
CF	Clear Chemical Film
CF-GOLD	Gold Chemical Film
P	Passivated
PLN	Plain
TIN	Electroplated Bright Tin
TIN-MATTE	Electroplated Matte Tin

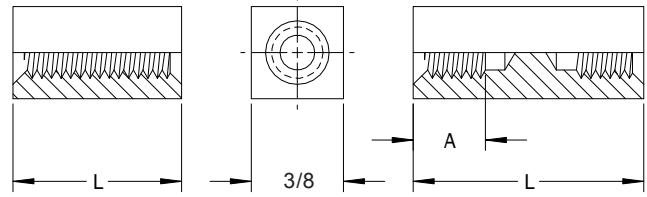
SST 5/16 Square Female-Female Standoffs

All dimensions in inches.
Custom sizes, materials, and finishes available

3/8 Square Female-Female Standoffs

PART DESCRIPTION EXAMPLE

SST3/8 — 1032 X 1.500 — STL — Z
T T T T
Thread Length Material Finish
Code Code Code Code



Style A

Style B

THREAD

Thread	Thread Code	A Min.
6-32	632	.375
8-32	832	.437
10-32	1032	.500
12-24	1224	.500
1/4-20	2520	.625

STYLE

Thread	Material Code			
	STL, AL, BRS, NYV0, NYV2		SS	
	Style A	Style B	Style A	Style B
	Length			
6-32	Thru 1	Over 1	Thru 1	Over 1
8-32	Thru 1	Over 1	Thru 1	Over 1
10-32	Thru 1-1/8	Over 1-1/8	Thru 1	Over 1
12-24	Thru 1-1/8	Over 1-1/8	Thru 1	Over 1
1/4-20	Thru 1-1/4	Over 1-1/4	Thru 1-1/4	Over 1-1/4

(1) Thread depths may be reduced for shorter standoff lengths.

LENGTH

Length	L (Length Code) ±.005
3/32	.094
1/8	.187
5/32	.156
3/16	.187
7/32	.219
1/4	.250
9/32	.281
5/16	.312
11/32	.344
3/8	.375
13/32	.406
7/16	.437
15/32	.469
1/2	.500
17/32	.531

Length	L (Length Code) ±.005
9/16	.562
19/32	.594
5/8	.625
21/32	.656
11/16	.687
23/32	.719
3/4	.750
25/32	.781
13/16	.812
27/32	.844
7/8	.875
29/32	.906
15/16	.937
31/32	.969
1	1.000

Length	L (Length Code) ±.005
1-1/16	1.062
1-1/8	1.125
1-3/16	1.187
1-1/4	1.250
1-5/16	1.312
1-3/8	1.375
1-7/16	1.437
1-1/2	1.500
1-9/16	1.562
1-5/8	1.625
1-11/16	1.687
1-3/4	1.750
1-13/16	1.812
1-7/8	1.875
1-15/16	1.937

Length	L (Length Code) ±.005
2	2.000
2-1/8	2.125
2-1/4	2.250
2-3/8	2.375
2-1/2	2.500
2-5/8	2.625
2-3/4	2.750
2-7/8	2.875
3	3.000
3-1/4	3.250
3-1/2	3.500
3-3/4	3.750
4	4.000
4-1/4	4.250
4-1/2	4.500

All dimensions in inches.
 Custom sizes, materials, and finishes available

SST 3/8 Square Female-Female Standoffs

3/8 Square Female-Female Standoffs

LENGTH (CONTINUED)

Length	L (Length Code) ±.005
4-3/4	4.750
5	5.000
5-1/4	5.250
5-1/2	5.500
5-3/4	5.750
6	6.000
6-1/4	6.250
6-1/2	6.500
6-3/4	6.750
7	7.000
7-1/4	7.250
7-1/2	7.500
7-3/4	7.750
8	8.000
8-1/4	8.250
8-1/2	8.500
8-3/4	8.750
9	9.000
9-1/4	9.250
9-1/2	9.500
9-3/4	9.750
10	10.000

MATERIAL

Material Code	Material Description
STL	Carbon Steel
SS	Stainless Steel
AL	Aluminum
BRS	Brass
NYVO	Nylon UL-94 V0
NYV2	Nylon UL-94-V2

FINISH

Finish Code	Finish Description
Z	Zinc with Clear Chromate
Z-BLK	Zinc with Black Chromate
Z-YEL	Zinc with Yellow Chromate
NI	Electroplated Bright Nickel
BLK-OX	Black Oxide
CF	Clear Chemical Film
CF-GOLD	Gold Chemical Film
P	Passivated
PLN	Plain
TIN	Electroplated Bright Tin
TIN-MATTE	Electroplated Matte Tin

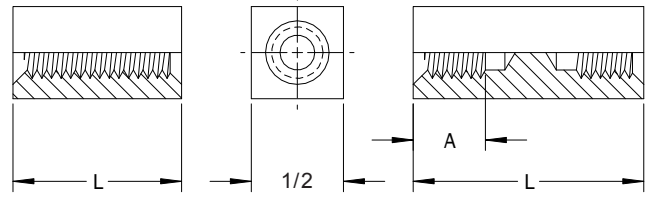
SST 3/8 Square Female-Female Standoffs

All dimensions in inches.
Custom sizes, materials, and finishes available

1/2 Square Female-Female Standoffs

PART DESCRIPTION EXAMPLE

SST1/2 — 2520 X 1.750 — STL — Z
T T T T
Thread Length Material Finish
Code Code Code Code



Style A

Style B

THREAD

Thread	Thread Code	A Min.
6-32	632	.375
8-32	832	.437
10-32	1032	.500
12-24	1224	.500
1/4-20	2520	.625
5/16-18	3118	.625

STYLE

Thread	Material Code			
	STL, AL, BRS, NYV0, NYV2		SS	
	Style A	Style B	Style A	Style B
	Length			
6-32	Thru 1	Over 1	Thru 1	Over 1
8-32	Thru 1	Over 1	Thru 1	Over 1
10-32	Thru 1-1/8	Over 1-1/8	Thru 1	Over 1
12-24	Thru 1-1/8	Over 1-1/8	Thru 1	Over 1
1/4-20	Thru 1-1/4	Over 1-1/4	Thru 1-1/4	Over 1-1/4
5/16-18	Thru 1-1/4	Over 1-1/4	Thru 1-1/4	Over 1-1/4

(1) Thread depths may be reduced for shorter standoff lengths.

LENGTH

Length	L (Length Code) ±.005
3/32	.094
1/8	.187
5/32	.156
3/16	.187
7/32	.219
1/4	.250
9/32	.281
5/16	.312
11/32	.344
3/8	.375
13/32	.406
7/16	.437
15/32	.469
1/2	.500
17/32	.531

Length	L (Length Code) ±.005
9/16	.562
19/32	.594
5/8	.625
21/32	.656
11/16	.687
23/32	.719
3/4	.750
25/32	.781
13/16	.812
27/32	.844
7/8	.875
29/32	.906
15/16	.937
31/32	.969
1	1.000

Length	L (Length Code) ±.005
1-1/16	1.062
1-1/8	1.125
1-3/16	1.187
1-1/4	1.250
1-5/16	1.312
1-3/8	1.375
1-7/16	1.437
1-1/2	1.500
1-9/16	1.562
1-5/8	1.625
1-11/16	1.687
1-3/4	1.750
1-13/16	1.812
1-7/8	1.875
1-15/16	1.937

Length	L (Length Code) ±.005
2	2.000
2-1/8	2.125
2-1/4	2.250
2-3/8	2.375
2-1/2	2.500
2-5/8	2.625
2-3/4	2.750
2-7/8	2.875
3	3.000
3-1/4	3.250
3-1/2	3.500
3-3/4	3.750
4	4.000
4-1/4	4.250
4-1/2	4.500

All dimensions in inches.
 Custom sizes, materials, and finishes available

SST 1/2 Square Female-Female Standoffs

1/2 Square Female-Female Standoffs

LENGTH (CONTINUED)

Length	L (Length Code) ±.005
4-3/4	4.750
5	5.000
5-1/4	5.250
5-1/2	5.500
5-3/4	5.750
6	6.000
6-1/4	6.250
6-1/2	6.500
6-3/4	6.750
7	7.000
7-1/4	7.250
7-1/2	7.500
7-3/4	7.750
8	8.000
8-1/4	8.250
8-1/2	8.500
8-3/4	8.750
9	9.000
9-1/4	9.250
9-1/2	9.500
9-3/4	9.750
10	10.000

MATERIAL

Material Code	Material Description
STL	Carbon Steel
SS	Stainless Steel
AL	Aluminum
BRS	Brass
NYVO	Nylon UL-94 V0
NYV2	Nylon UL-94-V2

FINISH

Finish Code	Finish Description
Z	Zinc with Clear Chromate
Z-BLK	Zinc with Black Chromate
Z-YEL	Zinc with Yellow Chromate
NI	Electroplated Bright Nickel
BLK-OX	Black Oxide
CF	Clear Chemical Film
CF-GOLD	Gold Chemical Film
P	Passivated
PLN	Plain
TIN	Electroplated Bright Tin
TIN-MATTE	Electroplated Matte Tin

SST 1/2 Square Female-Female Standoffs

All dimensions in inches.
Custom sizes, materials, and finishes available

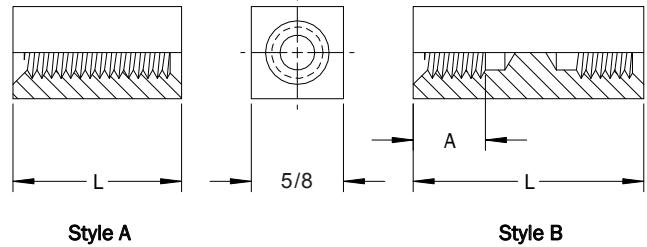
5/8 Square Female-Female Standoffs

PART DESCRIPTION EXAMPLE

SST5/8 — 3118 X 2.000 — STL — Z

T
T
T
T

Thread Code Length Code Material Code Finish Code



THREAD

Thread	Thread Code	A Min.
8-32	832	.437
10-32	1032	.500
12-24	1224	.500
1/4-20	2520	.625
5/16-18	3118	.625
3/8-16	3716	.625
7/16-14	4314	.625

STYLE

Thread	Material Code			
	STL, AL, BRS, NYV0, NYV2		SS	
	Style A	Style B	Style A	Style B
Length				
8-32	Thru 1	Over 1	Thru 1	Over 1
10-32	Thru 1-1/8	Over 1-1/8	Thru 1	Over 1
12-24	Thru 1-1/8	Over 1-1/8	Thru 1	Over 1
1/4-20	Thru 1-1/4	Over 1-1/4	Thru 1-1/4	Over 1-1/4
5/16-18	Thru 1-1/4	Over 1-1/4	Thru 1-1/4	Over 1-1/4
3/8-16	Thru 1-1/4	Over 1-1/4	Thru 1-1/4	Over 1-1/4
7/16-14	Thru 1-1/4	Over 1-1/4	Thru 1-1/4	Over 1-1/4

(1) Thread depths may be reduced for shorter standoff lengths.

LENGTH

Length	L (Length Code) ±.005
3/32	.094
1/8	.187
5/32	.156
3/16	.187
7/32	.219
1/4	.250
9/32	.281
5/16	.312
11/32	.344
3/8	.375
13/32	.406
7/16	.437
15/32	.469

Length	L (Length Code) ±.005
1/2	.500
17/32	.531
9/16	.562
19/32	.594
5/8	.625
21/32	.656
11/16	.687
23/32	.719
3/4	.750
25/32	.781
13/16	.812
27/32	.844
7/8	.875

Length	L (Length Code) ±.005
29/32	.906
15/16	.937
31/32	.969
1	1.000
1-1/16	1.062
1-1/8	1.125
1-3/16	1.187
1-1/4	1.250
1-5/16	1.312
1-3/8	1.375
1-7/16	1.437
1-1/2	1.500
1-9/16	1.562

Length	L (Length Code) ±.005
1-5/8	1.625
1-11/16	1.687
1-3/4	1.750
1-13/16	1.812
1-7/8	1.875
1-15/16	1.937
2	2.000
2-1/8	2.125
2-1/4	2.250
2-3/8	2.375
2-1/2	2.500
2-5/8	2.625
2-3/4	2.750

All dimensions in inches.
Custom sizes, materials, and finishes available

SST 5/8 Square Female-Female Standoffs

5/8 Square Female-Female Standoffs

LENGTH (CONTINUED)

Length	L (Length) Code ±.005
2-7/8	2.875
3	3.000
3-1/4	3.250
3-1/2	3.500
3-3/4	3.750
4	4.000
4-1/4	4.250
4-1/2	4.500
4-3/4	4.750
5	5.000
5-1/4	5.250
5-1/2	5.500
5-3/4	5.750
6	6.000
6-1/4	6.250

Length	L (Length) Code ±.005
6-1/2	6.500
6-3/4	6.750
7	7.000
7-1/4	7.250
7-1/2	7.500
7-3/4	7.750
8	8.000
8-1/4	8.250
8-1/2	8.500
8-3/4	8.750
9	9.000
9-1/4	9.250
9-1/2	9.500
9-3/4	9.750
10	10.000

MATERIAL

Material Code	Material Description
STL	Carbon Steel
SS	Stainless Steel
AL	Aluminum
BRS	Brass
NYVO	Nylon UL-94 V0
NYV2	Nylon UL-94-V2

FINISH

Finish Code	Finish Description
Z	Zinc with Clear Chromate
Z-BLK	Zinc with Black Chromate
Z-YEL	Zinc with Yellow Chromate
NI	Electroplated Bright Nickel
BLK-OX	Black Oxide
CF	Clear Chemical Film
CF-GOLD	Gold Chemical Film
P	Passivated
PLN	Plain
TIN	Electroplated Bright Tin
TIN-MATTE	Electroplated Matte Tin

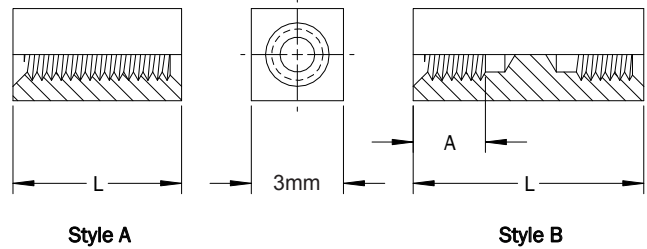
SST 5/8 Square Female-Female Standoffs

All dimensions in inches.
Custom sizes, materials, and finishes available

3mm Square Female-Female Standoffs

PART DESCRIPTION EXAMPLE

SST3 — M2 X 12.00 — STL — Z
 T T T T
 Thread Code Length Code Material Code Finish Code



THREAD

Thread	Thread Code	A Min.
M1 x 0.25	M1	2.78
M1.2 x 0.25	M1.2	3.18
M1.4 x 0.3	M1.4	3.97
M1.6 x 0.35	M1.6	4.76
M2 x 0.4	M2	4.76

STYLE

Thread	Material Code			
	STL, AL, BRS, NYV0, NYV2		SS	
	Style A	Style B	Style A	Style B
	Length			
M1 x 0.25	Thru 6.4	Over 6.4	Thru 4.0	Over 4.0
M1.2 x 0.25	Thru 6.4	Over 6.4	Thru 4.0	Over 4.0
M1.4 x 0.3	Thru 6.4	Over 6.4	Thru 4.0	Over 4.0
M1.6 x 0.35	Thru 9.5	Over 9.5	Thru 6.4	Over 6.4
M2 x 0.4	Thru 9.5	Over 9.5	Thru 6.4	Over 6.4

(1) Thread depths may be reduced for shorter standoff lengths.

LENGTH

Length	(Length Code) ±0.13
3	3.00
4	4.00
5	5.00
6	6.00
7	7.00
8	8.00
9	9.00
10	10.00
11	11.00
12	12.00
13	13.00

Length	(Length Code) ±0.13
14	14.00
15	15.00
16	16.00
17	17.00
18	18.00
19	19.00
20	20.00
21	21.00
22	22.00
23	23.00
24	24.00

Length	(Length Code) ±0.13
25	25.00
28	28.00
31	31.00
34	34.00
37	37.00
40	40.00
43	43.00
46	46.00
49	49.00
52	52.00

All dimensions in millimeters.
 Custom sizes, materials, and finishes available

3mm Square Female-Female Standoffs

MATERIAL

Material Code	Material Description
STL	Carbon Steel
SS	Stainless Steel
AL	Aluminum
BRS	Brass
NYVO	Nylon UL-94 V0
NYV2	Nylon UL-94-V2

FINISH

Finish Code	Finish Description
Z	Zinc with Clear Chromate
Z-BLK	Zinc with Black Chromate
Z-YEL	Zinc with Yellow Chromate
NI	Electroplated Bright Nickel
BLK-OX	Black Oxide
CF	Clear Chemical Film
CF-GOLD	Gold Chemical Film
P	Passivated
PLN	Plain
TIN	Electroplated Bright Tin
TIN-MATTE	Electroplated Matte Tin

SST 3mm Square Female-Female Standoffs

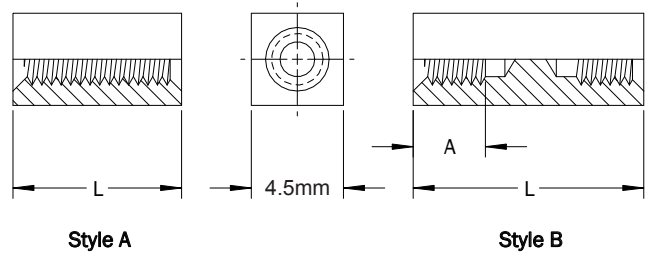
4.5mm Square Female-Female Standoffs

PART DESCRIPTION EXAMPLE

SST4.5 — M3 X 12.00 — STL — Z

T
T
T
T

Thread Code Length Code Material Code Finish Code



THREAD

Thread	Thread Code	A Min.
M1.6 x 0.35	M1.6	4.76
M2 x 0.4	M2	4.76
M2.5 x 0.45	M2.5	4.76
M3 x 0.5	M3	6.35

STYLE

Thread	Material Code			
	STL, AL, BRS, NYV0, NYV2		SS	
	Style A	Style B	Style A	Style B
Length				
M1.6 x 0.35	Thru 9.5	Over 9.5	Thru 6.4	Over 6.4
M2 x 0.4	Thru 9.5	Over 9.5	Thru 6.4	Over 6.4
M2.5 x 0.45	Thru 19.0	Over 19.0	Thru 16.0	Over 16.0
M3 x 0.5	Thru 25.0	Over 25.0	Thru 19.0	Over 19.0

(1) Thread depths may be reduced for shorter standoff lengths.

LENGTH

Length	L (Length Code) ±0.13
3	3.00
4	4.00
5	5.00
6	6.00
7	7.00
8	8.00
9	9.00
10	10.00
11	11.00
12	12.00
13	13.00
14	14.00
15	15.00
16	16.00
17	17.00
18	18.00
19	19.00

Length	L (Length Code) ±0.13
20	20.00
21	21.00
22	22.00
23	23.00
24	24.00
25	25.00
28	28.00
31	31.00
34	34.00
37	37.00
40	40.00
43	43.00
46	46.00
49	49.00
52	52.00

MATERIAL

Material Code	Material Description
STL	Carbon Steel
SS	Stainless Steel
AL	Aluminum
BRS	Brass
NYV0	Nylon UL-94 V0
NYV2	Nylon UL-94-V2

FINISH

Finish Code	Finish Description
Z	Zinc with Clear Chromate
Z-BLK	Zinc with Black Chromate
Z-YEL	Zinc with Yellow Chromate
NI	Electroplated Bright Nickel
BLK-OX	Black Oxide
CF	Clear Chemical Film
CF-GOLD	Gold Chemical Film
P	Passivated
PLN	Plain
TIN	Electroplated Bright Tin
TIN-MATTE	Electroplated Matte Tin

All dimensions in millimeters.
Custom sizes, materials, and finishes available

SST 4.5mm Square Female-Female Standoffs

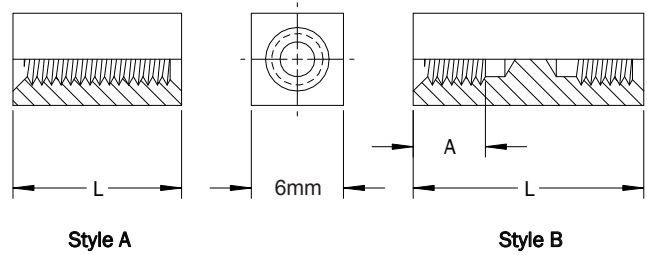
6mm Square Female-Female Standoffs

PART DESCRIPTION EXAMPLE

SST6 — M3.5 X 25.00 — STL — Z

T
T
T
T

Thread Code Length Code Material Code Finish Code



THREAD

Thread	Thread Code	A Min.
M2.5 x 0.45	M2.5	4.76
M3 x 0.5	M3	6.35
M3.5 x 0.6	M3.5	9.53
M4 x 0.7	M4	11.10

STYLE

Thread	Material Code			
	STL, AL, BRS, NYV0, NYV2		SS	
	Style A	Style B	Style A	Style B
Length				
M2.5 x 0.45	Thru 19	Over 19	Thru 16	Over 16
M3 x 0.5	Thru 25	Over 25	Thru 19	Over 19
M3.5 x 0.6	Thru 25	Over 25	Thru 25	Over 25
M4 x 0.7	Thru 25	Over 25	Thru 25	Over 25

(1) Thread depths may be reduced for shorter standoff lengths.

LENGTH

Length	L (Length Code) ±0.13
3	3.00
4	4.00
5	5.00
6	6.00
7	7.00
8	8.00
9	9.00
10	10.00
11	11.00
12	12.00
13	13.00
14	14.00
15	15.00
16	16.00
17	17.00
18	18.00

Length	L (Length Code) ±0.13
19	19.00
20	20.00
21	21.00
22	22.00
23	23.00
24	24.00
25	25.00
28	28.00
31	31.00
34	34.00
37	37.00
40	40.00
43	43.00
46	46.00
49	49.00
52	52.00

MATERIAL

Material Code	Material Description
STL	Carbon Steel
SS	Stainless Steel
AL	Aluminum
BRS	Brass
NYV0	Nylon UL-94 V0
NYV2	Nylon UL-94-V2

FINISH

Finish Code	Finish Description
Z	Zinc with Clear Chromate
Z-BLK	Zinc with Black Chromate
Z-YEL	Zinc with Yellow Chromate
NI	Electroplated Bright Nickel
BLK-OX	Black Oxide
CF	Clear Chemical Film
CF-GOLD	Gold Chemical Film
P	Passivated
PLN	Plain
TIN	Electroplated Bright Tin
TIN-MATTE	Electroplated Matte Tin

All dimensions in millimeters.
Custom sizes, materials, and finishes available

SST 6mm Square Female-Female Standoffs

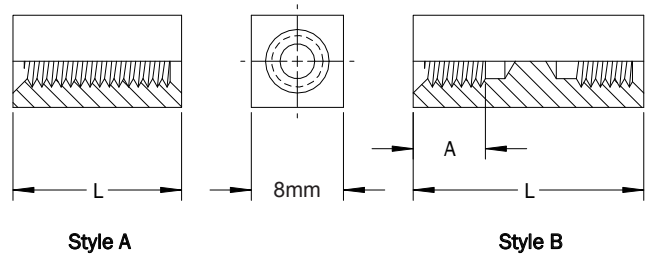
8mm Square Female-Female Standoffs

PART DESCRIPTION EXAMPLE

SST8 — M4 X 25.00 — STL — Z

T
T
T
T

Thread Code Length Code Material Code Finish Code



THREAD

Thread	Thread Code	A Min.
M3 x 0.5	M3	6.35
M3.5 x 0.6	M3.5	9.53
M4 x 0.7	M4	11.10
M5 x 0.8	M5	12.70

STYLE

Thread	Material Code			
	STL, AL, BRS, NYV0, NYV2		SS	
	Style A	Style B	Style A	Style B
	Length			
M3 x 0.5	Thru 25	Over 25	Thru 19	Over 19
M3.5 x 0.6	Thru 25	Over 25	Thru 25	Over 25
M4 x 0.7	Thru 25	Over 25	Thru 25	Over 25
M5 x 0.8	Thru 28	Over 28	Thru 25	Over 25

(1) Thread depths may be reduced for shorter standoff lengths.

LENGTH

Length	L (Length Code) ±0.13
3	3.00
4	4.00
5	5.00
6	6.00
7	7.00
8	8.00
9	9.00
10	10.00
11	11.00
12	12.00
13	13.00
14	14.00
15	15.00
16	16.00
17	17.00
18	18.00

Length	L (Length Code) ±0.13
19	19.00
20	20.00
21	21.00
22	22.00
23	23.00
24	24.00
25	25.00
28	28.00
31	31.00
34	34.00
37	37.00
40	40.00
43	43.00
46	46.00
49	49.00
52	52.00

MATERIAL

Material Code	Material Description
STL	Carbon Steel
SS	Stainless Steel
AL	Aluminum
BRS	Brass
NYV0	Nylon UL-94 V0
NYV2	Nylon UL-94-V2

FINISH

Finish Code	Finish Description
Z	Zinc with Clear Chromate
Z-BLK	Zinc with Black Chromate
Z-YEL	Zinc with Yellow Chromate
NI	Electroplated Bright Nickel
BLK-OX	Black Oxide
CF	Clear Chemical Film
CF-GOLD	Gold Chemical Film
P	Passivated
PLN	Plain
TIN	Electroplated Bright Tin
TIN-MATTE	Electroplated Matte Tin

All dimensions in millimeters.
Custom sizes, materials, and finishes available

SST 8mm Square Female-Female Standoffs

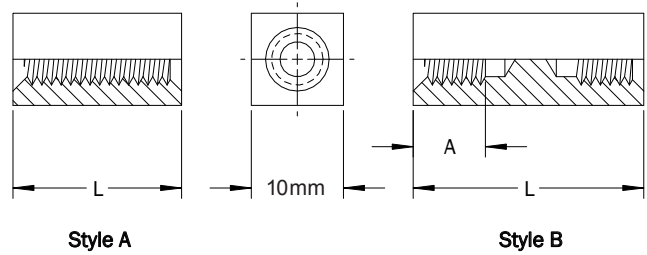
10mm Square Female-Female Standoffs

PART DESCRIPTION EXAMPLE

SST10 — M5 X 25.00 — STL — Z

T
T
T
T

Thread Code Length Code Material Code Finish Code



THREAD

Thread	Thread Code	A Min.
M3 x 0.5	M3	6.35
M3.5 x 0.6	M3.5	9.53
M4 x 0.7	M4	11.10
M5 x 0.8	M5	12.70

STYLE

Thread	Material Code			
	STL, AL, BRS, NYV0, NYV2		SS	
	Style A	Style B	Style A	Style B
	Length			
M3 x 0.5	Thru 25	Over 25	Thru 19	Over 19
M3.5 x 0.6	Thru 25	Over 25	Thru 25	Over 25
M4 x 0.7	Thru 25	Over 25	Thru 25	Over 25
M5 x 0.8	Thru 28	Over 28	Thru 25	Over 25

(1) Thread depths may be reduced for shorter standoff lengths.

LENGTH

Length	L (Length Code) ±0.13
3	3.00
4	4.00
5	5.00
6	6.00
7	7.00
8	8.00
9	9.00
10	10.00
11	11.00
12	12.00
13	13.00
14	14.00
15	15.00
16	16.00
17	17.00
18	18.00

Length	L (Length Code) ±0.13
19	19.00
20	20.00
21	21.00
22	22.00
23	23.00
24	24.00
25	25.00
28	28.00
31	31.00
34	34.00
37	37.00
40	40.00
43	43.00
46	46.00
49	49.00
52	52.00

MATERIAL

Material Code	Material Description
STL	Carbon Steel
SS	Stainless Steel
AL	Aluminum
BRS	Brass
NYV0	Nylon UL-94 V0
NYV2	Nylon UL-94-V2

FINISH

Finish Code	Finish Description
Z	Zinc with Clear Chromate
Z-BLK	Zinc with Black Chromate
Z-YEL	Zinc with Yellow Chromate
NI	Electroplated Bright Nickel
BLK-OX	Black Oxide
CF	Clear Chemical Film
CF-GOLD	Gold Chemical Film
P	Passivated
PLN	Plain
TIN	Electroplated Bright Tin
TIN-MATTE	Electroplated Matte Tin

All dimensions in millimeters.
Custom sizes, materials, and finishes available

SST 10mm Square Female-Female Standoffs

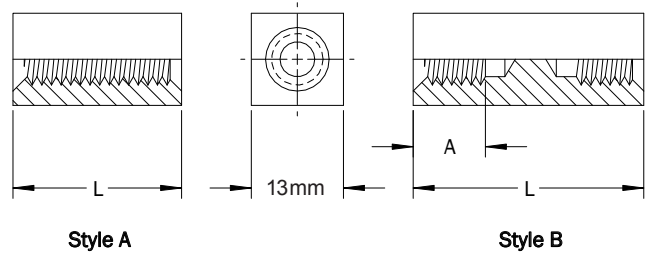
13mm Square Female-Female Standoffs

PART DESCRIPTION EXAMPLE

SST13 — M6 X 25.00 — STL — Z

T
T
T
T

Thread Code Length Code Material Code Finish Code



THREAD

Thread	Thread Code	A Min.
M4 x 0.7	M4	11.10
M5 x 0.8	M5	12.70
M6 x 1.0	M6	16.00
M8 x 1.25	M8	16.00

STYLE

Thread	Material Code			
	STL, AL, BRS, NYV0, NYV2		SS	
	Style A	Style B	Style A	Style B
Length				
M4 x 0.7	Thru 25	Over 25	Thru 25	Over 25
M5 x 0.8	Thru 28	Over 28	Thru 25	Over 25
M6 x 1.0	Thru 31	Over 31	Thru 31	Over 31
M8 x 1.25	Thru 31	Over 31	Thru 31	Over 31

(1) Thread depths may be reduced for shorter standoff lengths.

LENGTH

Length	L (Length Code) ±0.13
3	3.00
4	4.00
5	5.00
6	6.00
7	7.00
8	8.00
9	9.00
10	10.00
11	11.00
12	12.00
13	13.00
14	14.00
15	15.00
16	16.00
17	17.00
18	18.00

Length	L (Length Code) ±0.13
19	19.00
20	20.00
21	21.00
22	22.00
23	23.00
24	24.00
25	25.00
28	28.00
31	31.00
34	34.00
37	37.00
40	40.00
43	43.00
46	46.00
49	49.00
52	52.00

MATERIAL

Material Code	Material Description
STL	Carbon Steel
SS	Stainless Steel
AL	Aluminum
BRS	Brass
NYV0	Nylon UL-94 V0
NYV2	Nylon UL-94-V2

FINISH

Finish Code	Finish Description
Z	Zinc with Clear Chromate
Z-BLK	Zinc with Black Chromate
Z-YEL	Zinc with Yellow Chromate
NI	Electroplated Bright Nickel
BLK-OX	Black Oxide
CF	Clear Chemical Film
CF-GOLD	Gold Chemical Film
P	Passivated
PLN	Plain
TIN	Electroplated Bright Tin
TIN-MATTE	Electroplated Matte Tin

All dimensions in millimeters.
Custom sizes, materials, and finishes available

SST 13mm Square Female-Female Standoffs