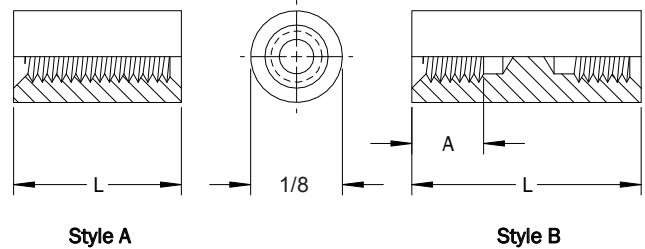


1/8 Round Female-Female Standoffs

PART DESCRIPTION EXAMPLE

RST1/8 — 256 X .500 — STL — Z
T T T T
 Thread Code Length Code Material Code Finish Code



THREAD

| Thread | Thread Code | A Min. |
|--------|-------------|--------|
| 0-80 | 080 | .187 |
| 2-56 | 256 | .187 |

STYLE

| Thread | Material Code | | | |
|--------|--------------------------|----------|----------|----------|
| | STL, AL, BRS, NYV0, NYV2 | | SS | |
| | Style A | Style B | Style A | Style B |
| | Length | | | |
| 0-80 | Thru 3/8 | Over 3/8 | Thru 1/4 | Over 1/4 |
| 2-56 | Thru 3/4 | Over 3/4 | Thru 5/8 | Over 5/8 |

(1) Thread depths may be reduced for shorter standoff lengths.

LENGTH

| Length | L (Length Code) ±.005 |
|--------|-----------------------|
| 3/32 | .094 |
| 1/8 | .187 |
| 5/32 | .156 |
| 3/16 | .187 |
| 7/32 | .219 |
| 1/4 | .250 |
| 9/32 | .281 |
| 5/16 | .312 |
| 11/32 | .344 |
| 3/8 | .375 |
| 13/32 | .406 |
| 7/16 | .437 |
| 15/32 | .469 |
| 1/2 | .500 |
| 17/32 | .531 |
| 9/16 | .562 |
| 19/32 | .594 |

| Length | L (Length Code) ±.005 |
|--------|-----------------------|
| 5/8 | .625 |
| 21/32 | .656 |
| 11/16 | .687 |
| 23/32 | .719 |
| 3/4 | .750 |
| 25/32 | .781 |
| 13/16 | .812 |
| 27/32 | .844 |
| 7/8 | .875 |
| 29/32 | .906 |
| 15/16 | .937 |
| 31/32 | .969 |
| 1 | 1.000 |
| 1-1/16 | 1.062 |
| 1-1/8 | 1.125 |
| 1-3/16 | 1.187 |
| 1-1/4 | 1.250 |

| Length | L (Length Code) ±.005 |
|---------|-----------------------|
| 1-5/16 | 1.312 |
| 1-3/8 | 1.375 |
| 1-7/16 | 1.437 |
| 1-1/2 | 1.500 |
| 1-9/16 | 1.562 |
| 1-5/8 | 1.625 |
| 1-11/16 | 1.687 |
| 1-3/4 | 1.750 |
| 1-13/16 | 1.812 |
| 1-7/8 | 1.875 |
| 1-15/16 | 1.937 |
| 2 | 2.000 |

All dimensions in inches.
 Custom sizes, materials, and finishes available

RST 1/8 Round Female-Female Standoffs

1/8 Round Female-Female Standoffs

MATERIAL

| Material Code | Material Description |
|---------------|----------------------|
| STL | Carbon Steel |
| SS | Stainless Steel |
| AL | Aluminum |
| BRS | Brass |
| NYVO | Nylon UL-94 V0 |
| NYV2 | Nylon UL-94-V2 |

FINISH

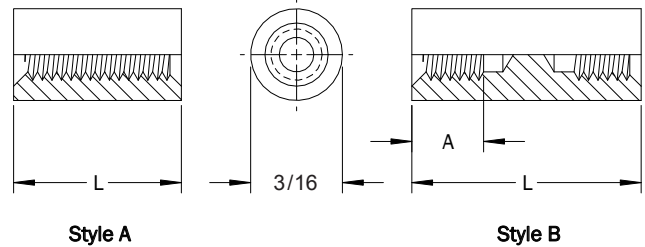
| Finish Code | Finish Description |
|-------------|-----------------------------|
| Z | Zinc with Clear Chromate |
| Z-BLK | Zinc with Black Chromate |
| Z-YEL | Zinc with Yellow Chromate |
| NI | Electroplated Bright Nickel |
| BLK-OX | Black Oxide |
| CF | Clear Chemical Film |
| CF-GOLD | Gold Chemical Film |
| P | Passivated |
| PLN | Plain |
| TIN | Electroplated Bright Tin |
| TIN-MATTE | Electroplated Matte Tin |

RST 1/8 Round Female-Female Standoffs

3/16 Round Female-Female Standoffs

PART DESCRIPTION EXAMPLE

RST3/16 — 440 X .750 — STL — Z
T T T T
 Thread Code Length Code Material Code Finish Code



THREAD

| Thread | Thread Code | A Min. |
|--------|-------------|--------|
| 2-56 | 256 | .187 |
| 4-40 | 440 | .250 |
| 6-32 | 632 | .375 |

STYLE

| Thread | Material Code | | | |
|--------|--------------------------|----------|----------|----------|
| | STL, AL, BRS, NYV0, NYV2 | | SS | |
| | Style A | Style B | Style A | Style B |
| | Length | | | |
| 2-56 | Thru 3/4 | Over 3/4 | Thru 5/8 | Over 5/8 |
| 4-40 | Thru 1 | Over 1 | Thru 3/4 | Over 3/4 |
| 6-32 | Thru 1 | Over 1 | Thru 1 | Over 1 |

(1) Thread depths may be reduced for shorter standoff lengths.

LENGTH

| Length | L (Length Code) ±.005 |
|--------|-----------------------|
| 3/32 | .094 |
| 1/8 | .187 |
| 5/32 | .156 |
| 3/16 | .187 |
| 7/32 | .219 |
| 1/4 | .250 |
| 9/32 | .281 |
| 5/16 | .312 |
| 11/32 | .344 |
| 3/8 | .375 |
| 13/32 | .406 |
| 7/16 | .437 |
| 15/32 | .469 |
| 1/2 | .500 |
| 17/32 | .531 |
| 9/16 | .562 |
| 19/32 | .594 |

| Length | L (Length Code) ±.005 |
|--------|-----------------------|
| 5/8 | .625 |
| 21/32 | .656 |
| 11/16 | .687 |
| 23/32 | .719 |
| 3/4 | .750 |
| 25/32 | .781 |
| 13/16 | .812 |
| 27/32 | .844 |
| 7/8 | .875 |
| 29/32 | .906 |
| 15/16 | .937 |
| 31/32 | .969 |
| 1 | 1.000 |
| 1-1/16 | 1.062 |
| 1-1/8 | 1.125 |
| 1-3/16 | 1.187 |
| 1-1/4 | 1.250 |

| Length | L (Length Code) ±.005 |
|---------|-----------------------|
| 1-5/16 | 1.312 |
| 1-3/8 | 1.375 |
| 1-7/16 | 1.437 |
| 1-1/2 | 1.500 |
| 1-9/16 | 1.562 |
| 1-5/8 | 1.625 |
| 1-11/16 | 1.687 |
| 1-3/4 | 1.750 |
| 1-13/16 | 1.812 |
| 1-7/8 | 1.875 |
| 1-15/16 | 1.937 |
| 2 | 2.000 |
| 2-1/16 | 2.062 |
| 2-1/8 | 2.125 |
| 2-3/16 | 2.187 |
| 2-1/4 | 2.250 |
| 2-5/16 | 2.312 |

| Length | L (Length Code) ±.005 |
|---------|-----------------------|
| 2-3/8 | 2.375 |
| 2-7/16 | 2.437 |
| 2-1/2 | 2.500 |
| 2-9/16 | 2.562 |
| 2-5/8 | 2.625 |
| 2-11/16 | 2.687 |
| 2-3/4 | 2.750 |
| 2-13/16 | 2.812 |
| 2-7/8 | 2.875 |
| 2-15/16 | 2.937 |
| 3 | 3.000 |

All dimensions in inches.
 Custom sizes, materials, and finishes available

RST 3/16 Round Female-Female Standoffs

3/16 Round Female-Female Standoffs

MATERIAL

| Material Code | Material Description |
|---------------|----------------------|
| STL | Carbon Steel |
| SS | Stainless Steel |
| AL | Aluminum |
| BRS | Brass |
| NYVO | Nylon UL-94 V0 |
| NYV2 | Nylon UL-94-V2 |

FINISH

| Finish Code | Finish Description |
|-------------|-----------------------------|
| Z | Zinc with Clear Chromate |
| Z-BLK | Zinc with Black Chromate |
| Z-YEL | Zinc with Yellow Chromate |
| NI | Electroplated Bright Nickel |
| BLK-OX | Black Oxide |
| CF | Clear Chemical Film |
| CF-GOLD | Gold Chemical Film |
| P | Passivated |
| PLN | Plain |
| TIN | Electroplated Bright Tin |
| TIN-MATTE | Electroplated Matte Tin |

All dimensions in inches.
 Custom sizes, materials, and finishes available

RST 3/16 Round Female-Female Standoffs

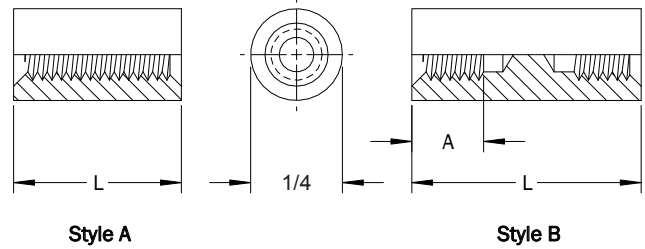
1/4 Round Female-Female Standoffs

PART DESCRIPTION EXAMPLE

RST1/4 — 632 X 1.000 — STL — Z

T
T
T
T

Thread Code Length Code Material Code Finish Code



THREAD

| Thread | Thread Code | A Min. |
|--------|-------------|--------|
| 4-40 | 440 | .250 |
| 6-32 | 632 | .375 |
| 8-32 | 832 | .437 |
| 10-32 | 1032 | .500 |

STYLE

| Thread | Material Code | | | |
|--------|--------------------------|------------|----------|----------|
| | STL, AL, BRS, NYV0, NYV2 | | SS | |
| | Style A | Style B | Style A | Style B |
| Length | | | | |
| 4-40 | Thru 1 | Over 1 | Thru 3/4 | Over 3/4 |
| 6-32 | Thru 1 | Over 1 | Thru 1 | Over 1 |
| 8-32 | Thru 1 | Over 1 | Thru 1 | Over 1 |
| 10-32 | Thru 1-1/8 | Over 1-1/8 | Thru 1 | Over 1 |

(1) Thread depths may be reduced for shorter standoff lengths.

LENGTH

| Length | L (Length Code) ±.005 |
|--------|-----------------------|
| 3/32 | .094 |
| 1/8 | .187 |
| 5/32 | .156 |
| 3/16 | .187 |
| 7/32 | .219 |
| 1/4 | .250 |
| 9/32 | .281 |
| 5/16 | .312 |
| 11/32 | .344 |
| 3/8 | .375 |
| 13/32 | .406 |
| 7/16 | .437 |
| 15/32 | .469 |
| 1/2 | .500 |
| 17/32 | .531 |
| 9/16 | .562 |

| Length | L (Length Code) ±.005 |
|--------|-----------------------|
| 19/32 | .594 |
| 5/8 | .625 |
| 21/32 | .656 |
| 11/16 | .687 |
| 23/32 | .719 |
| 3/4 | .750 |
| 25/32 | .781 |
| 13/16 | .812 |
| 27/32 | .844 |
| 7/8 | .875 |
| 29/32 | .906 |
| 15/16 | .937 |
| 31/32 | .969 |
| 1 | 1.000 |
| 1-1/16 | 1.062 |
| 1-1/8 | 1.125 |

| Length | L (Length Code) ±.005 |
|---------|-----------------------|
| 1-3/16 | 1.187 |
| 1-1/4 | 1.250 |
| 1-5/16 | 1.312 |
| 1-3/8 | 1.375 |
| 1-7/16 | 1.437 |
| 1-1/2 | 1.500 |
| 1-9/16 | 1.562 |
| 1-5/8 | 1.625 |
| 1-11/16 | 1.687 |
| 1-3/4 | 1.750 |
| 1-13/16 | 1.812 |
| 1-7/8 | 1.875 |
| 1-15/16 | 1.937 |
| 2 | 2.000 |
| 2-1/8 | 2.125 |
| 2-1/4 | 2.250 |

| Length | L (Length Code) ±.005 |
|--------|-----------------------|
| 2-3/8 | 2.375 |
| 2-1/2 | 2.500 |
| 2-5/8 | 2.625 |
| 2-3/4 | 2.750 |
| 2-7/8 | 2.875 |
| 3 | 3.000 |
| 3-1/4 | 3.250 |
| 3-1/2 | 3.500 |
| 3-3/4 | 3.750 |
| 4 | 4.000 |
| 4-1/4 | 4.250 |
| 4-1/2 | 4.500 |
| 4-3/4 | 4.750 |
| 5 | 5.000 |
| 5-1/4 | 5.250 |
| 5-1/2 | 5.500 |

All dimensions in inches.
Custom sizes, materials, and finishes available

RST 1/4 Round Female-Female Standoffs

1/4 Round Female-Female Standoffs

LENGTH (CONTINUED)

| Length | L (Length) Code ±.005 |
|--------|--------------------------------|
| 5-3/4 | 5.750 |
| 6 | 6.000 |
| 6-1/4 | 6.250 |
| 6-1/2 | 6.500 |
| 6-3/4 | 6.750 |
| 7 | 7.000 |
| 7-1/4 | 7.250 |
| 7-1/2 | 7.500 |
| 7-3/4 | 7.750 |
| 8 | 8.000 |
| 8-1/4 | 8.250 |
| 8-1/2 | 8.500 |
| 8-3/4 | 8.750 |
| 9 | 9.000 |
| 9-1/4 | 9.250 |
| 9-1/2 | 9.500 |
| 9-3/4 | 9.750 |
| 10 | 10.000 |

MATERIAL

| Material Code | Material Description |
|---------------|----------------------|
| STL | Carbon Steel |
| SS | Stainless Steel |
| AL | Aluminum |
| BRS | Brass |
| NYVO | Nylon UL-94 V0 |
| NYV2 | Nylon UL-94-V2 |

FINISH

| Finish Code | Finish Description |
|-------------|-----------------------------|
| Z | Zinc with Clear Chromate |
| Z-BLK | Zinc with Black Chromate |
| Z-YEL | Zinc with Yellow Chromate |
| NI | Electroplated Bright Nickel |
| BLK-OX | Black Oxide |
| CF | Clear Chemical Film |
| CF-GOLD | Gold Chemical Film |
| P | Passivated |
| PLN | Plain |
| TIN | Electroplated Bright Tin |
| TIN-MATTE | Electroplated Matte Tin |

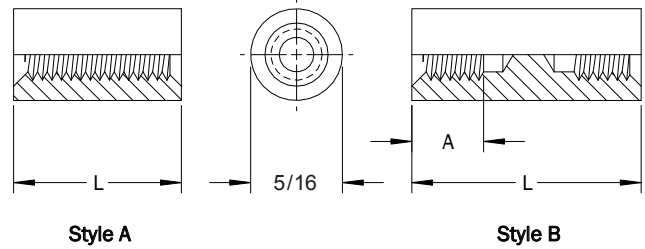
RST 1/4 Round Female-Female Standoffs

All dimensions in inches.
Custom sizes, materials, and finishes available

5/16 Round Female-Female Standoffs

PART DESCRIPTION EXAMPLE

RST5/16 — 832 X 1.250 — STL — Z
 T T T T
 Thread Code Length Code Material Code Finish Code



THREAD

| Thread | Thread Code | A Min. |
|--------|-------------|--------|
| 4-40 | 440 | .250 |
| 6-32 | 632 | .375 |
| 8-32 | 832 | .437 |
| 10-32 | 1032 | .500 |

STYLE

| Thread | Material Code | | | |
|--------|--------------------------|------------|----------|----------|
| | STL, AL, BRS, NYV0, NYV2 | | SS | |
| | Style A | Style B | Style A | Style B |
| Length | | | | |
| 4-40 | Thru 1 | Over 1 | Thru 3/4 | Over 3/4 |
| 6-32 | Thru 1 | Over 1 | Thru 1 | Over 1 |
| 8-32 | Thru 1 | Over 1 | Thru 1 | Over 1 |
| 10-32 | Thru 1-1/8 | Over 1-1/8 | Thru 1 | Over 1 |

(1) Thread depths may be reduced for shorter standoff lengths.

LENGTH

| Length | L (Length Code) ±.005 |
|--------|-----------------------|
| 3/32 | .094 |
| 1/8 | .187 |
| 5/32 | .156 |
| 3/16 | .187 |
| 7/32 | .219 |
| 1/4 | .250 |
| 9/32 | .281 |
| 5/16 | .312 |
| 11/32 | .344 |
| 3/8 | .375 |
| 13/32 | .406 |
| 7/16 | .437 |
| 15/32 | .469 |
| 1/2 | .500 |
| 17/32 | .531 |
| 9/16 | .562 |

| Length | L (Length Code) ±.005 |
|--------|-----------------------|
| 19/32 | .594 |
| 5/8 | .625 |
| 21/32 | .656 |
| 11/16 | .687 |
| 23/32 | .719 |
| 3/4 | .750 |
| 25/32 | .781 |
| 13/16 | .812 |
| 27/32 | .844 |
| 7/8 | .875 |
| 29/32 | .906 |
| 15/16 | .937 |
| 31/32 | .969 |
| 1 | 1.000 |
| 1-1/16 | 1.062 |
| 1-1/8 | 1.125 |

| Length | L (Length Code) ±.005 |
|---------|-----------------------|
| 1-3/16 | 1.187 |
| 1-1/4 | 1.250 |
| 1-5/16 | 1.312 |
| 1-3/8 | 1.375 |
| 1-7/16 | 1.437 |
| 1-1/2 | 1.500 |
| 1-9/16 | 1.562 |
| 1-5/8 | 1.625 |
| 1-11/16 | 1.687 |
| 1-3/4 | 1.750 |
| 1-13/16 | 1.812 |
| 1-7/8 | 1.875 |
| 1-15/16 | 1.937 |
| 2 | 2.000 |
| 2-1/8 | 2.125 |
| 2-1/4 | 2.250 |

| Length | L (Length Code) ±.005 |
|--------|-----------------------|
| 2-3/8 | 2.375 |
| 2-1/2 | 2.500 |
| 2-5/8 | 2.625 |
| 2-3/4 | 2.750 |
| 2-7/8 | 2.875 |
| 3 | 3.000 |
| 3-1/4 | 3.250 |
| 3-1/2 | 3.500 |
| 3-3/4 | 3.750 |
| 4 | 4.000 |
| 4-1/4 | 4.250 |
| 4-1/2 | 4.500 |
| 4-3/4 | 4.750 |
| 5 | 5.000 |
| 5-1/4 | 5.250 |
| 5-1/2 | 5.500 |

All dimensions in inches.
 Custom sizes, materials, and finishes available

RST 5/16 Round Female-Female Standoffs

5/16 Round Female-Female Standoffs

LENGTH (CONTINUED)

| Length | L (Length) Code ±.005 |
|--------|--------------------------------|
| 5-3/4 | 5.750 |
| 6 | 6.000 |
| 6-1/4 | 6.250 |
| 6-1/2 | 6.500 |
| 6-3/4 | 6.750 |
| 7 | 7.000 |
| 7-1/4 | 7.250 |
| 7-1/2 | 7.500 |
| 7-3/4 | 7.750 |
| 8 | 8.000 |
| 8-1/4 | 8.250 |
| 8-1/2 | 8.500 |
| 8-3/4 | 8.750 |
| 9 | 9.000 |
| 9-1/4 | 9.250 |
| 9-1/2 | 9.500 |
| 9-3/4 | 9.750 |
| 10 | 10.000 |

MATERIAL

| Material Code | Material Description |
|---------------|----------------------|
| STL | Carbon Steel |
| SS | Stainless Steel |
| AL | Aluminum |
| BRS | Brass |
| NYVO | Nylon UL-94 V0 |
| NYV2 | Nylon UL-94-V2 |

FINISH

| Finish Code | Finish Description |
|-------------|-----------------------------|
| Z | Zinc with Clear Chromate |
| Z-BLK | Zinc with Black Chromate |
| Z-YEL | Zinc with Yellow Chromate |
| NI | Electroplated Bright Nickel |
| BLK-OX | Black Oxide |
| CF | Clear Chemical Film |
| CF-GOLD | Gold Chemical Film |
| P | Passivated |
| PLN | Plain |
| TIN | Electroplated Bright Tin |
| TIN-MATTE | Electroplated Matte Tin |

RST 5/16 Round Female-Female Standoffs

All dimensions in inches.
Custom sizes, materials, and finishes available

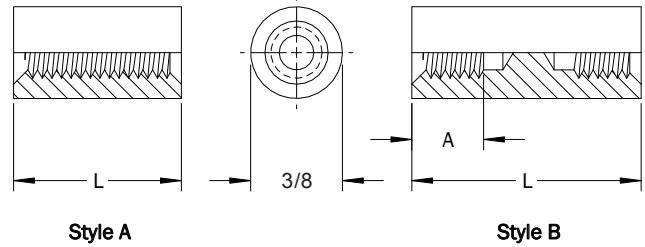
3/8 Round Female-Female Standoffs

PART DESCRIPTION EXAMPLE

RST3/8 — 1032 X 1.500 — STL — Z

T
T
T
T

Thread Code Length Code Material Code Finish Code



THREAD

| Thread | Thread Code | A Min. |
|--------|-------------|--------|
| 6-32 | 632 | .375 |
| 8-32 | 832 | .437 |
| 10-32 | 1032 | .500 |
| 12-24 | 1224 | .500 |
| 1/4-20 | 2520 | .625 |

STYLE

| Thread | Material Code | | | |
|--------|--------------------------|------------|------------|------------|
| | STL, AL, BRS, NYV0, NYV2 | | SS | |
| | Style A | Style B | Style A | Style B |
| | Length | | | |
| 6-32 | Thru 1 | Over 1 | Thru 1 | Over 1 |
| 8-32 | Thru 1 | Over 1 | Thru 1 | Over 1 |
| 10-32 | Thru 1-1/8 | Over 1-1/8 | Thru 1 | Over 1 |
| 12-24 | Thru 1-1/8 | Over 1-1/8 | Thru 1 | Over 1 |
| 1/4-20 | Thru 1-1/4 | Over 1-1/4 | Thru 1-1/4 | Over 1-1/4 |

(1) Thread depths may be reduced for shorter standoff lengths.

LENGTH

| Length | L (Length Code) ±.005 |
|--------|-----------------------|
| 3/32 | .094 |
| 1/8 | .187 |
| 5/32 | .156 |
| 3/16 | .187 |
| 7/32 | .219 |
| 1/4 | .250 |
| 9/32 | .281 |
| 5/16 | .312 |
| 11/32 | .344 |
| 3/8 | .375 |
| 13/32 | .406 |
| 7/16 | .437 |
| 15/32 | .469 |
| 1/2 | .500 |
| 17/32 | .531 |

| Length | L (Length Code) ±.005 |
|--------|-----------------------|
| 9/16 | .562 |
| 19/32 | .594 |
| 5/8 | .625 |
| 21/32 | .656 |
| 11/16 | .687 |
| 23/32 | .719 |
| 3/4 | .750 |
| 25/32 | .781 |
| 13/16 | .812 |
| 27/32 | .844 |
| 7/8 | .875 |
| 29/32 | .906 |
| 15/16 | .937 |
| 31/32 | .969 |
| 1 | 1.000 |

| Length | L (Length Code) ±.005 |
|---------|-----------------------|
| 1-1/16 | 1.062 |
| 1-1/8 | 1.125 |
| 1-3/16 | 1.187 |
| 1-1/4 | 1.250 |
| 1-5/16 | 1.312 |
| 1-3/8 | 1.375 |
| 1-7/16 | 1.437 |
| 1-1/2 | 1.500 |
| 1-9/16 | 1.562 |
| 1-5/8 | 1.625 |
| 1-11/16 | 1.687 |
| 1-3/4 | 1.750 |
| 1-13/16 | 1.812 |
| 1-7/8 | 1.875 |
| 1-15/16 | 1.937 |

| Length | L (Length Code) ±.005 |
|--------|-----------------------|
| 2 | 2.000 |
| 2-1/8 | 2.125 |
| 2-1/4 | 2.250 |
| 2-3/8 | 2.375 |
| 2-1/2 | 2.500 |
| 2-5/8 | 2.625 |
| 2-3/4 | 2.750 |
| 2-7/8 | 2.875 |
| 3 | 3.000 |
| 3-1/4 | 3.250 |
| 3-1/2 | 3.500 |
| 3-3/4 | 3.750 |
| 4 | 4.000 |
| 4-1/4 | 4.250 |
| 4-1/2 | 4.500 |

All dimensions in inches.
Custom sizes, materials, and finishes available

RST 3/8 Round Female-Female Standoffs

3/8 Round Female-Female Standoffs

LENGTH (CONTINUED)

| Length | L (Length Code) ±.005 |
|--------|-----------------------------|
| 4-3/4 | 4.750 |
| 5 | 5.000 |
| 5-1/4 | 5.250 |
| 5-1/2 | 5.500 |
| 5-3/4 | 5.750 |
| 6 | 6.000 |
| 6-1/4 | 6.250 |
| 6-1/2 | 6.500 |
| 6-3/4 | 6.750 |
| 7 | 7.000 |
| 7-1/4 | 7.250 |
| 7-1/2 | 7.500 |
| 7-3/4 | 7.750 |
| 8 | 8.000 |
| 8-1/4 | 8.250 |
| 8-1/2 | 8.500 |
| 8-3/4 | 8.750 |
| 9 | 9.000 |
| 9-1/4 | 9.250 |
| 9-1/2 | 9.500 |
| 9-3/4 | 9.750 |
| 10 | 10.000 |

MATERIAL

| Material Code | Material Description |
|---------------|----------------------|
| STL | Carbon Steel |
| SS | Stainless Steel |
| AL | Aluminum |
| BRS | Brass |
| NYVO | Nylon UL-94 V0 |
| NYV2 | Nylon UL-94-V2 |

FINISH

| Finish Code | Finish Description |
|-------------|-----------------------------|
| Z | Zinc with Clear Chromate |
| Z-BLK | Zinc with Black Chromate |
| Z-YEL | Zinc with Yellow Chromate |
| NI | Electroplated Bright Nickel |
| BLK-OX | Black Oxide |
| CF | Clear Chemical Film |
| CF-GOLD | Gold Chemical Film |
| P | Passivated |
| PLN | Plain |
| TIN | Electroplated Bright Tin |
| TIN-MATTE | Electroplated Matte Tin |

RST 3/8 Round Female-Female Standoffs

All dimensions in inches.
Custom sizes, materials, and finishes available

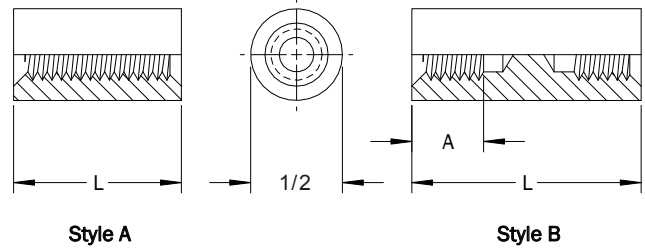
1/2 Round Female-Female Standoffs

PART DESCRIPTION EXAMPLE

RST1/2 — 2520 X 1.750 — STL — Z

T
T
T
T

Thread Code Length Code Material Code Finish Code



THREAD

| Thread | Thread Code | A Min. |
|---------|-------------|--------|
| 6-32 | 632 | .375 |
| 8-32 | 832 | .437 |
| 10-32 | 1032 | .500 |
| 12-24 | 1224 | .500 |
| 1/4-20 | 2520 | .625 |
| 5/16-18 | 3118 | .625 |

STYLE

| Thread | Material Code | | | |
|---------|--------------------------|------------|------------|------------|
| | STL, AL, BRS, NYV0, NYV2 | | SS | |
| | Style A | Style B | Style A | Style B |
| Length | | | | |
| 6-32 | Thru 1 | Over 1 | Thru 1 | Over 1 |
| 8-32 | Thru 1 | Over 1 | Thru 1 | Over 1 |
| 10-32 | Thru 1-1/8 | Over 1-1/8 | Thru 1 | Over 1 |
| 12-24 | Thru 1-1/8 | Over 1-1/8 | Thru 1 | Over 1 |
| 1/4-20 | Thru 1-1/4 | Over 1-1/4 | Thru 1-1/4 | Over 1-1/4 |
| 5/16-18 | Thru 1-1/4 | Over 1-1/4 | Thru 1-1/4 | Over 1-1/4 |

(1) Thread depths may be reduced for shorter standoff lengths.

LENGTH

| Length | L (Length Code) ±.005 |
|--------|-----------------------|
| 3/32 | .094 |
| 1/8 | .187 |
| 5/32 | .156 |
| 3/16 | .187 |
| 7/32 | .219 |
| 1/4 | .250 |
| 9/32 | .281 |
| 5/16 | .312 |
| 11/32 | .344 |
| 3/8 | .375 |
| 13/32 | .406 |
| 7/16 | .437 |
| 15/32 | .469 |
| 1/2 | .500 |
| 17/32 | .531 |

| Length | L (Length Code) ±.005 |
|--------|-----------------------|
| 9/16 | .562 |
| 19/32 | .594 |
| 5/8 | .625 |
| 21/32 | .656 |
| 11/16 | .687 |
| 23/32 | .719 |
| 3/4 | .750 |
| 25/32 | .781 |
| 13/16 | .812 |
| 27/32 | .844 |
| 7/8 | .875 |
| 29/32 | .906 |
| 15/16 | .937 |
| 31/32 | .969 |
| 1 | 1.000 |

| Length | L (Length Code) ±.005 |
|---------|-----------------------|
| 1-1/16 | 1.062 |
| 1-1/8 | 1.125 |
| 1-3/16 | 1.187 |
| 1-1/4 | 1.250 |
| 1-5/16 | 1.312 |
| 1-3/8 | 1.375 |
| 1-7/16 | 1.437 |
| 1-1/2 | 1.500 |
| 1-9/16 | 1.562 |
| 1-5/8 | 1.625 |
| 1-11/16 | 1.687 |
| 1-3/4 | 1.750 |
| 1-13/16 | 1.812 |
| 1-7/8 | 1.875 |
| 1-15/16 | 1.937 |

| Length | L (Length Code) ±.005 |
|--------|-----------------------|
| 2 | 2.000 |
| 2-1/8 | 2.125 |
| 2-1/4 | 2.250 |
| 2-3/8 | 2.375 |
| 2-1/2 | 2.500 |
| 2-5/8 | 2.625 |
| 2-3/4 | 2.750 |
| 2-7/8 | 2.875 |
| 3 | 3.000 |
| 3-1/4 | 3.250 |
| 3-1/2 | 3.500 |
| 3-3/4 | 3.750 |
| 4 | 4.000 |
| 4-1/4 | 4.250 |
| 4-1/2 | 4.500 |

All dimensions in inches.
Custom sizes, materials, and finishes available

1/2 Round Female-Female Standoffs

LENGTH (CONTINUED)

| Length | L (Length) Code ±.005 |
|--------|--------------------------------|
| 4-3/4 | 4.750 |
| 5 | 5.000 |
| 5-1/4 | 5.250 |
| 5-1/2 | 5.500 |
| 5-3/4 | 5.750 |
| 6 | 6.000 |
| 6-1/4 | 6.250 |
| 6-1/2 | 6.500 |
| 6-3/4 | 6.750 |
| 7 | 7.000 |
| 7-1/4 | 7.250 |
| 7-1/2 | 7.500 |
| 7-3/4 | 7.750 |
| 8 | 8.000 |
| 8-1/4 | 8.250 |
| 8-1/2 | 8.500 |
| 8-3/4 | 8.750 |
| 9 | 9.000 |
| 9-1/4 | 9.250 |
| 9-1/2 | 9.500 |
| 9-3/4 | 9.750 |
| 10 | 10.000 |

MATERIAL

| Material Code | Material Description |
|---------------|----------------------|
| STL | Carbon Steel |
| SS | Stainless Steel |
| AL | Aluminum |
| BRS | Brass |
| NYVO | Nylon UL-94 V0 |
| NYV2 | Nylon UL-94-V2 |

FINISH

| Finish Code | Finish Description |
|-------------|-----------------------------|
| Z | Zinc with Clear Chromate |
| Z-BLK | Zinc with Black Chromate |
| Z-YEL | Zinc with Yellow Chromate |
| NI | Electroplated Bright Nickel |
| BLK-OX | Black Oxide |
| CF | Clear Chemical Film |
| CF-GOLD | Gold Chemical Film |
| P | Passivated |
| PLN | Plain |
| TIN | Electroplated Bright Tin |
| TIN-MATTE | Electroplated Matte Tin |

RST 1/2 Round Female-Female Standoffs

All dimensions in inches.
Custom sizes, materials, and finishes available

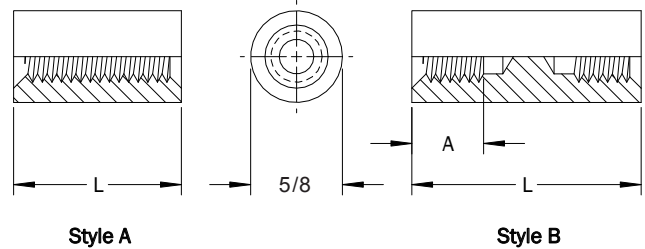
5/8 Round Female-Female Standoffs

PART DESCRIPTION EXAMPLE

RST5/8 — 3118 X 2.000 — STL — Z

T
T
T
T

Thread Code Length Code Material Code Finish Code



THREAD

| Thread | Thread Code | A Min. |
|---------|-------------|--------|
| 8-32 | 832 | .437 |
| 10-32 | 1032 | .500 |
| 12-24 | 1224 | .500 |
| 1/4-20 | 2520 | .625 |
| 5/16-18 | 3118 | .625 |
| 3/8-16 | 3716 | .625 |
| 7/16-14 | 4314 | .625 |

STYLE

| Thread | Material Code | | | |
|---------|--------------------------|------------|------------|------------|
| | STL, AL, BRS, NYV0, NYV2 | | SS | |
| | Style A | Style B | Style A | Style B |
| Length | | | | |
| 8-32 | Thru 1 | Over 1 | Thru 1 | Over 1 |
| 10-32 | Thru 1-1/8 | Over 1-1/8 | Thru 1 | Over 1 |
| 12-24 | Thru 1-1/8 | Over 1-1/8 | Thru 1 | Over 1 |
| 1/4-20 | Thru 1-1/4 | Over 1-1/4 | Thru 1-1/4 | Over 1-1/4 |
| 5/16-18 | Thru 1-1/4 | Over 1-1/4 | Thru 1-1/4 | Over 1-1/4 |
| 3/8-16 | Thru 1-1/4 | Over 1-1/4 | Thru 1-1/4 | Over 1-1/4 |
| 7/16-14 | Thru 1-1/4 | Over 1-1/4 | Thru 1-1/4 | Over 1-1/4 |

(1) Thread depths may be reduced for shorter standoff lengths.

LENGTH

| Length | L (Length Code) ±.005 |
|--------|-----------------------|
| 3/32 | .094 |
| 1/8 | .187 |
| 5/32 | .156 |
| 3/16 | .187 |
| 7/32 | .219 |
| 1/4 | .250 |
| 9/32 | .281 |
| 5/16 | .312 |
| 11/32 | .344 |
| 3/8 | .375 |
| 13/32 | .406 |
| 7/16 | .437 |
| 15/32 | .469 |

| Length | L (Length Code) ±.005 |
|--------|-----------------------|
| 1/2 | .500 |
| 17/32 | .531 |
| 9/16 | .562 |
| 19/32 | .594 |
| 5/8 | .625 |
| 21/32 | .656 |
| 11/16 | .687 |
| 23/32 | .719 |
| 3/4 | .750 |
| 25/32 | .781 |
| 13/16 | .812 |
| 27/32 | .844 |
| 7/8 | .875 |

| Length | L (Length Code) ±.005 |
|--------|-----------------------|
| 29/32 | .906 |
| 15/16 | .937 |
| 31/32 | .969 |
| 1 | 1.000 |
| 1-1/16 | 1.062 |
| 1-1/8 | 1.125 |
| 1-3/16 | 1.187 |
| 1-1/4 | 1.250 |
| 1-5/16 | 1.312 |
| 1-3/8 | 1.375 |
| 1-7/16 | 1.437 |
| 1-1/2 | 1.500 |
| 1-9/16 | 1.562 |

| Length | L (Length Code) ±.005 |
|---------|-----------------------|
| 1-5/8 | 1.625 |
| 1-11/16 | 1.687 |
| 1-3/4 | 1.750 |
| 1-13/16 | 1.812 |
| 1-7/8 | 1.875 |
| 1-15/16 | 1.937 |
| 2 | 2.000 |
| 2-1/8 | 2.125 |
| 2-1/4 | 2.250 |
| 2-3/8 | 2.375 |
| 2-1/2 | 2.500 |
| 2-5/8 | 2.625 |
| 2-3/4 | 2.750 |

All dimensions in inches.
Custom sizes, materials, and finishes available

RST 5/8 Round Female-Female Standoffs

5/8 Round Female-Female Standoffs

LENGTH (CONTINUED)

| Length | L (Length) Code ±.005 | Length | L (Length) Code ±.005 |
|--------|--------------------------------|--------|--------------------------------|
| 2-7/8 | 2.875 | 6-1/2 | 6.500 |
| 3 | 3.000 | 6-3/4 | 6.750 |
| 3-1/4 | 3.250 | 7 | 7.000 |
| 3-1/2 | 3.500 | 7-1/4 | 7.250 |
| 3-3/4 | 3.750 | 7-1/2 | 7.500 |
| 4 | 4.000 | 7-3/4 | 7.750 |
| 4-1/4 | 4.250 | 8 | 8.000 |
| 4-1/2 | 4.500 | 8-1/4 | 8.250 |
| 4-3/4 | 4.750 | 8-1/2 | 8.500 |
| 5 | 5.000 | 8-3/4 | 8.750 |
| 5-1/4 | 5.250 | 9 | 9.000 |
| 5-1/2 | 5.500 | 9-1/4 | 9.250 |
| 5-3/4 | 5.750 | 9-1/2 | 9.500 |
| 6 | 6.000 | 9-3/4 | 9.750 |
| 6-1/4 | 6.250 | 10 | 10.000 |

MATERIAL

| Material Code | Material Description |
|---------------|----------------------|
| STL | Carbon Steel |
| SS | Stainless Steel |
| AL | Aluminum |
| BRS | Brass |
| NYVO | Nylon UL-94 V0 |
| NYV2 | Nylon UL-94-V2 |

FINISH

| Finish Code | Finish Description |
|-------------|-----------------------------|
| Z | Zinc with Clear Chromate |
| Z-BLK | Zinc with Black Chromate |
| Z-YEL | Zinc with Yellow Chromate |
| NI | Electroplated Bright Nickel |
| BLK-OX | Black Oxide |
| CF | Clear Chemical Film |
| CF-GOLD | Gold Chemical Film |
| P | Passivated |
| PLN | Plain |
| TIN | Electroplated Bright Tin |
| TIN-MATTE | Electroplated Matte Tin |

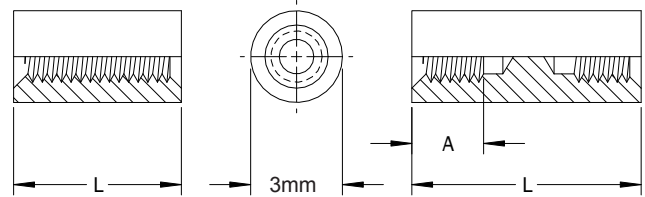
RST 5/8 Round Female-Female Standoffs

All dimensions in inches.
Custom sizes, materials, and finishes available

3mm Round Female-Female Standoffs

PART DESCRIPTION EXAMPLE

RST3 — M2 X 12.00 — STL — Z
 Thread Code Length Code Material Code Finish Code



THREAD

| Thread | Thread Code | A Min. |
|-------------|-------------|--------|
| M1 x 0.25 | M1 | 2.78 |
| M1.2 x 0.25 | M1.2 | 3.18 |
| M1.4 x 0.3 | M1.4 | 3.97 |
| M1.6 x 0.35 | M1.6 | 4.76 |
| M2 x 0.4 | M2 | 4.76 |

STYLE

| Thread | Material Code | | | |
|-------------|--------------------------|----------|----------|----------|
| | STL, AL, BRS, NYV0, NYV2 | | SS | |
| | Style A | Style B | Style A | Style B |
| Length | | | | |
| M1 x 0.25 | Thru 6.4 | Over 6.4 | Thru 4.0 | Over 4.0 |
| M1.2 x 0.25 | Thru 6.4 | Over 6.4 | Thru 4.0 | Over 4.0 |
| M1.4 x 0.3 | Thru 6.4 | Over 6.4 | Thru 4.0 | Over 4.0 |
| M1.6 x 0.35 | Thru 9.5 | Over 9.5 | Thru 6.4 | Over 6.4 |
| M2 x 0.4 | Thru 9.5 | Over 9.5 | Thru 6.4 | Over 6.4 |

(1) Thread depths may be reduced for shorter standoff lengths.

LENGTH

| Length | (Length Code) ±0.13 |
|--------|---------------------|
| 3 | 3.00 |
| 4 | 4.00 |
| 5 | 5.00 |
| 6 | 6.00 |
| 7 | 7.00 |
| 8 | 8.00 |
| 9 | 9.00 |
| 10 | 10.00 |
| 11 | 11.00 |
| 12 | 12.00 |
| 13 | 13.00 |

| Length | (Length Code) ±0.13 |
|--------|---------------------|
| 14 | 14.00 |
| 15 | 15.00 |
| 16 | 16.00 |
| 17 | 17.00 |
| 18 | 18.00 |
| 19 | 19.00 |
| 20 | 20.00 |
| 21 | 21.00 |
| 22 | 22.00 |
| 23 | 23.00 |
| 24 | 24.00 |

| Length | (Length Code) ±0.13 |
|--------|---------------------|
| 25 | 25.00 |
| 28 | 28.00 |
| 31 | 31.00 |
| 34 | 34.00 |
| 37 | 37.00 |
| 40 | 40.00 |
| 43 | 43.00 |
| 46 | 46.00 |
| 49 | 49.00 |
| 52 | 52.00 |

All dimensions in millimeters.
 Custom sizes, materials, and finishes available

RST 3mm Round Female-Female Standoffs

3mm Round Female-Female Standoffs

MATERIAL

| Material Code | Material Description |
|---------------|----------------------|
| STL | Carbon Steel |
| SS | Stainless Steel |
| AL | Aluminum |
| BRS | Brass |
| NYVO | Nylon UL-94 V0 |
| NYV2 | Nylon UL-94-V2 |

FINISH

| Finish Code | Finish Description |
|-------------|-----------------------------|
| Z | Zinc with Clear Chromate |
| Z-BLK | Zinc with Black Chromate |
| Z-YEL | Zinc with Yellow Chromate |
| NI | Electroplated Bright Nickel |
| BLK-OX | Black Oxide |
| CF | Clear Chemical Film |
| CF-GOLD | Gold Chemical Film |
| P | Passivated |
| PLN | Plain |
| TIN | Electroplated Bright Tin |
| TIN-MATTE | Electroplated Matte Tin |

RST 3mm Round Female-Female Standoffs

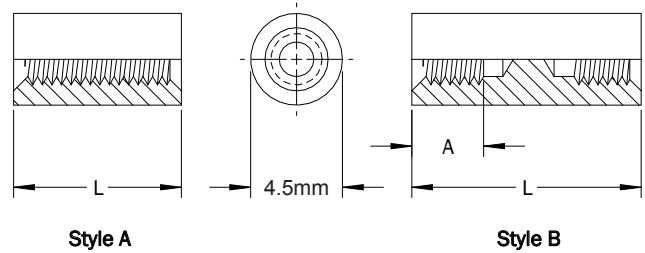
4.5mm Round Female-Female Standoffs

PART DESCRIPTION EXAMPLE

RST4.5 — M3 X 12.00 — STL — Z

T
T
T
T

Thread Code Length Code Material Code Finish Code



THREAD

| Thread | Thread Code | A Min. |
|-------------|-------------|--------|
| M1.6 x 0.35 | M1.6 | 4.76 |
| M2 x 0.4 | M2 | 4.76 |
| M2.5 x 0.45 | M2.5 | 4.76 |
| M3 x 0.5 | M3 | 6.35 |

STYLE

| Thread | Material Code | | | |
|-------------|--------------------------|-----------|-----------|-----------|
| | STL, AL, BRS, NYV0, NYV2 | | SS | |
| | Style A | Style B | Style A | Style B |
| Length | | | | |
| M1.6 x 0.35 | Thru 9.5 | Over 9.5 | Thru 6.4 | Over 6.4 |
| M2 x 0.4 | Thru 9.5 | Over 9.5 | Thru 6.4 | Over 6.4 |
| M2.5 x 0.45 | Thru 19.0 | Over 19.0 | Thru 16.0 | Over 16.0 |
| M3 x 0.5 | Thru 25.0 | Over 25.0 | Thru 19.0 | Over 19.0 |

(1) Thread depths may be reduced for shorter standoff lengths.

LENGTH

| Length | L (Length Code) ±0.13 |
|--------|-----------------------|
| 3 | 3.00 |
| 4 | 4.00 |
| 5 | 5.00 |
| 6 | 6.00 |
| 7 | 7.00 |
| 8 | 8.00 |
| 9 | 9.00 |
| 10 | 10.00 |
| 11 | 11.00 |
| 12 | 12.00 |
| 13 | 13.00 |
| 14 | 14.00 |
| 15 | 15.00 |
| 16 | 16.00 |
| 17 | 17.00 |
| 18 | 18.00 |
| 19 | 19.00 |

| Length | L (Length Code) ±0.13 |
|--------|-----------------------|
| 20 | 20.00 |
| 21 | 21.00 |
| 22 | 22.00 |
| 23 | 23.00 |
| 24 | 24.00 |
| 25 | 25.00 |
| 28 | 28.00 |
| 31 | 31.00 |
| 34 | 34.00 |
| 37 | 37.00 |
| 40 | 40.00 |
| 43 | 43.00 |
| 46 | 46.00 |
| 49 | 49.00 |
| 52 | 52.00 |

MATERIAL

| Material Code | Material Description |
|---------------|----------------------|
| STL | Carbon Steel |
| SS | Stainless Steel |
| AL | Aluminum |
| BRS | Brass |
| NYV0 | Nylon UL-94 V0 |
| NYV2 | Nylon UL-94-V2 |

FINISH

| Finish Code | Finish Description |
|-------------|-----------------------------|
| Z | Zinc with Clear Chromate |
| Z-BLK | Zinc with Black Chromate |
| Z-YEL | Zinc with Yellow Chromate |
| NI | Electroplated Bright Nickel |
| BLK-OX | Black Oxide |
| CF | Clear Chemical Film |
| CF-GOLD | Gold Chemical Film |
| P | Passivated |
| PLN | Plain |
| TIN | Electroplated Bright Tin |
| TIN-MATTE | Electroplated Matte Tin |

All dimensions in millimeters.
Custom sizes, materials, and finishes available

RST 4.5mm Round Female-Female Standoffs

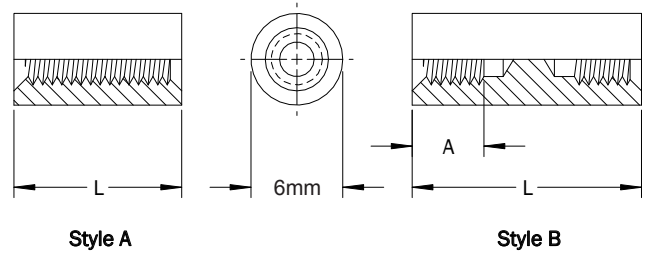
6mm Round Female-Female Standoffs

PART DESCRIPTION EXAMPLE

RST6 — M3.5 X 25.00 — STL — Z

T
T
T
T

Thread Code Length Code Material Code Finish Code



THREAD

| Thread | Thread Code | A Min. |
|-------------|-------------|--------|
| M2.5 x 0.45 | M2.5 | 4.76 |
| M3 x 0.5 | M3 | 6.35 |
| M3.5 x 0.6 | M3.5 | 9.53 |
| M4 x 0.7 | M4 | 11.10 |

STYLE

| Thread | Material Code | | | |
|-------------|--------------------------|---------|---------|---------|
| | STL, AL, BRS, NYV0, NYV2 | | SS | |
| | Style A | Style B | Style A | Style B |
| Length | | | | |
| M2.5 x 0.45 | Thru 19 | Over 19 | Thru 16 | Over 16 |
| M3 x 0.5 | Thru 25 | Over 25 | Thru 19 | Over 19 |
| M3.5 x 0.6 | Thru 25 | Over 25 | Thru 25 | Over 25 |
| M4 x 0.7 | Thru 25 | Over 25 | Thru 25 | Over 25 |

(1) Thread depths may be reduced for shorter standoff lengths.

LENGTH

| Length | L (Length Code) ±0.13 |
|--------|-----------------------|
| 3 | 3.00 |
| 4 | 4.00 |
| 5 | 5.00 |
| 6 | 6.00 |
| 7 | 7.00 |
| 8 | 8.00 |
| 9 | 9.00 |
| 10 | 10.00 |
| 11 | 11.00 |
| 12 | 12.00 |
| 13 | 13.00 |
| 14 | 14.00 |
| 15 | 15.00 |
| 16 | 16.00 |
| 17 | 17.00 |
| 18 | 18.00 |

| Length | L (Length Code) ±0.13 |
|--------|-----------------------|
| 19 | 19.00 |
| 20 | 20.00 |
| 21 | 21.00 |
| 22 | 22.00 |
| 23 | 23.00 |
| 24 | 24.00 |
| 25 | 25.00 |
| 28 | 28.00 |
| 31 | 31.00 |
| 34 | 34.00 |
| 37 | 37.00 |
| 40 | 40.00 |
| 43 | 43.00 |
| 46 | 46.00 |
| 49 | 49.00 |
| 52 | 52.00 |

MATERIAL

| Material Code | Material Description |
|---------------|----------------------|
| STL | Carbon Steel |
| SS | Stainless Steel |
| AL | Aluminum |
| BRS | Brass |
| NYV0 | Nylon UL-94 V0 |
| NYV2 | Nylon UL-94-V2 |

FINISH

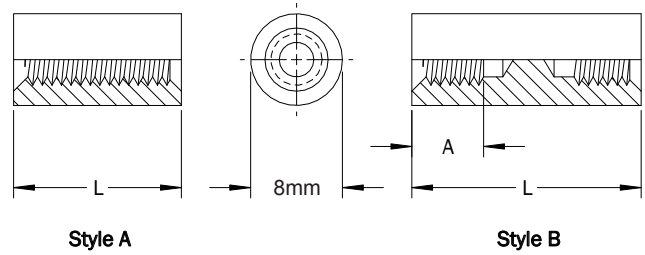
| Finish Code | Finish Description |
|-------------|-----------------------------|
| Z | Zinc with Clear Chromate |
| Z-BLK | Zinc with Black Chromate |
| Z-YEL | Zinc with Yellow Chromate |
| NI | Electroplated Bright Nickel |
| BLK-OX | Black Oxide |
| CF | Clear Chemical Film |
| CF-GOLD | Gold Chemical Film |
| P | Passivated |
| PLN | Plain |
| TIN | Electroplated Bright Tin |
| TIN-MATTE | Electroplated Matte Tin |

All dimensions in millimeters.
Custom sizes, materials, and finishes available

8mm Round Female Standoffs

PART DESCRIPTION EXAMPLE

RST8 — M4 X 25.00 — STL — Z
 T T T T
 Thread Code Length Code Material Code Finish Code



THREAD

| Thread | Thread Code | A Min. |
|------------|-------------|--------|
| M3 x 0.5 | M3 | 6.35 |
| M3.5 x 0.6 | M3.5 | 9.53 |
| M4 x 0.7 | M4 | 11.10 |
| M5 x 0.8 | M5 | 12.70 |

STYLE

| Thread | Material Code | | | |
|------------|--------------------------|---------|---------|---------|
| | STL, AL, BRS, NYV0, NYV2 | | SS | |
| | Style A | Style B | Style A | Style B |
| Length | | | | |
| M3 x 0.5 | Thru 25 | Over 25 | Thru 19 | Over 19 |
| M3.5 x 0.6 | Thru 25 | Over 25 | Thru 25 | Over 25 |
| M4 x 0.7 | Thru 25 | Over 25 | Thru 25 | Over 25 |
| M5 x 0.8 | Thru 28 | Over 28 | Thru 25 | Over 25 |

(1) Thread depths may be reduced for shorter standoff lengths.

LENGTH

| Length | L (Length Code) ±0.13 |
|--------|-----------------------|
| 3 | 3.00 |
| 4 | 4.00 |
| 5 | 5.00 |
| 6 | 6.00 |
| 7 | 7.00 |
| 8 | 8.00 |
| 9 | 9.00 |
| 10 | 10.00 |
| 11 | 11.00 |
| 12 | 12.00 |
| 13 | 13.00 |
| 14 | 14.00 |
| 15 | 15.00 |
| 16 | 16.00 |
| 17 | 17.00 |
| 18 | 18.00 |

| Length | L (Length Code) ±0.13 |
|--------|-----------------------|
| 19 | 19.00 |
| 20 | 20.00 |
| 21 | 21.00 |
| 22 | 22.00 |
| 23 | 23.00 |
| 24 | 24.00 |
| 25 | 25.00 |
| 28 | 28.00 |
| 31 | 31.00 |
| 34 | 34.00 |
| 37 | 37.00 |
| 40 | 40.00 |
| 43 | 43.00 |
| 46 | 46.00 |
| 49 | 49.00 |
| 52 | 52.00 |

MATERIAL

| Material Code | Material Description |
|---------------|----------------------|
| STL | Carbon Steel |
| SS | Stainless Steel |
| AL | Aluminum |
| BRS | Brass |
| NYV0 | Nylon UL-94 V0 |
| NYV2 | Nylon UL-94-V2 |

FINISH

| Finish Code | Finish Description |
|-------------|-----------------------------|
| Z | Zinc with Clear Chromate |
| Z-BLK | Zinc with Black Chromate |
| Z-YEL | Zinc with Yellow Chromate |
| NI | Electroplated Bright Nickel |
| BLK-OX | Black Oxide |
| CF | Clear Chemical Film |
| CF-GOLD | Gold Chemical Film |
| P | Passivated |
| PLN | Plain |
| TIN | Electroplated Bright Tin |
| TIN-MATTE | Electroplated Matte Tin |

All dimensions in millimeters.
 Custom sizes, materials, and finishes available

RST 8mm Round Female-Female Standoffs

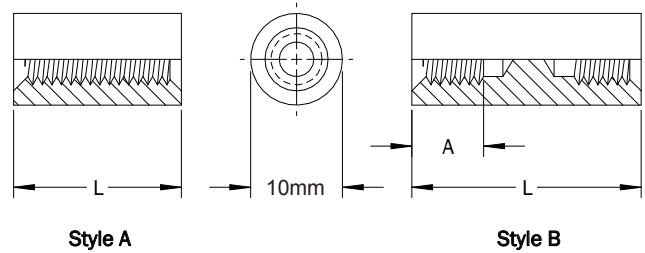
10mm Round Female-Female Standoffs

PART DESCRIPTION EXAMPLE

RST10 — M5 X 25.00 — STL — Z

T
T
T
T

Thread Code Length Code Material Code Finish Code



THREAD

| Thread | Thread Code | A Min. |
|------------|-------------|--------|
| M3 x 0.5 | M3 | 6.35 |
| M3.5 x 0.6 | M3.5 | 9.53 |
| M4 x 0.7 | M4 | 11.10 |
| M5 x 0.8 | M5 | 12.70 |

STYLE

| Thread | Material Code | | | |
|------------|--------------------------|---------|---------|---------|
| | STL, AL, BRS, NYV0, NYV2 | | SS | |
| | Style A | Style B | Style A | Style B |
| Length | | | | |
| M3 x 0.5 | Thru 25 | Over 25 | Thru 19 | Over 19 |
| M3.5 x 0.6 | Thru 25 | Over 25 | Thru 25 | Over 25 |
| M4 x 0.7 | Thru 25 | Over 25 | Thru 25 | Over 25 |
| M5 x 0.8 | Thru 28 | Over 28 | Thru 25 | Over 25 |

(1) Thread depths may be reduced for shorter standoff lengths.

LENGTH

| Length | L (Length Code) ±0.13 |
|--------|-----------------------|
| 3 | 3.00 |
| 4 | 4.00 |
| 5 | 5.00 |
| 6 | 6.00 |
| 7 | 7.00 |
| 8 | 8.00 |
| 9 | 9.00 |
| 10 | 10.00 |
| 11 | 11.00 |
| 12 | 12.00 |
| 13 | 13.00 |
| 14 | 14.00 |
| 15 | 15.00 |
| 16 | 16.00 |
| 17 | 17.00 |
| 18 | 18.00 |

| Length | L (Length Code) ±0.13 |
|--------|-----------------------|
| 19 | 19.00 |
| 20 | 20.00 |
| 21 | 21.00 |
| 22 | 22.00 |
| 23 | 23.00 |
| 24 | 24.00 |
| 25 | 25.00 |
| 28 | 28.00 |
| 31 | 31.00 |
| 34 | 34.00 |
| 37 | 37.00 |
| 40 | 40.00 |
| 43 | 43.00 |
| 46 | 46.00 |
| 49 | 49.00 |
| 52 | 52.00 |

MATERIAL

| Material Code | Material Description |
|---------------|----------------------|
| STL | Carbon Steel |
| SS | Stainless Steel |
| AL | Aluminum |
| BRS | Brass |
| NYV0 | Nylon UL-94 V0 |
| NYV2 | Nylon UL-94-V2 |

FINISH

| Finish Code | Finish Description |
|-------------|-----------------------------|
| Z | Zinc with Clear Chromate |
| Z-BLK | Zinc with Black Chromate |
| Z-YEL | Zinc with Yellow Chromate |
| NI | Electroplated Bright Nickel |
| BLK-OX | Black Oxide |
| CF | Clear Chemical Film |
| CF-GOLD | Gold Chemical Film |
| P | Passivated |
| PLN | Plain |
| TIN | Electroplated Bright Tin |
| TIN-MATTE | Electroplated Matte Tin |

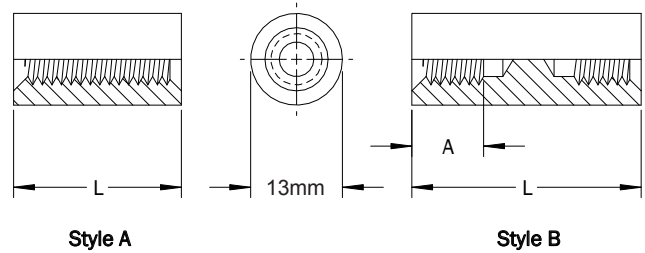
All dimensions in millimeters.
Custom sizes, materials, and finishes available

RST 10mm Round Female-Female Standoffs

13mm Round Female-Female Standoffs

PART DESCRIPTION EXAMPLE

RST13 — M6 X 25.00 — STL — Z
 Thread Code Length Code Material Code Finish Code



THREAD

| Thread | Thread Code | A Min. |
|-----------|-------------|--------|
| M4 x 0.7 | M4 | 11.10 |
| M5 x 0.8 | M5 | 12.70 |
| M6 x 1.0 | M6 | 16.00 |
| M8 x 1.25 | M8 | 16.00 |

STYLE

| Thread | Material Code | | | |
|-----------|--------------------------|---------|---------|---------|
| | STL, AL, BRS, NYV0, NYV2 | | SS | |
| | Style A | Style B | Style A | Style B |
| Length | | | | |
| M4 x 0.7 | Thru 25 | Over 25 | Thru 25 | Over 25 |
| M5 x 0.8 | Thru 28 | Over 28 | Thru 25 | Over 25 |
| M6 x 1.0 | Thru 31 | Over 31 | Thru 31 | Over 31 |
| M8 x 1.25 | Thru 31 | Over 31 | Thru 31 | Over 31 |

(1) Thread depths may be reduced for shorter standoff lengths.

LENGTH

| Length | L (Length Code) ±0.13 |
|--------|-----------------------|
| 3 | 3.00 |
| 4 | 4.00 |
| 5 | 5.00 |
| 6 | 6.00 |
| 7 | 7.00 |
| 8 | 8.00 |
| 9 | 9.00 |
| 10 | 10.00 |
| 11 | 11.00 |
| 12 | 12.00 |
| 13 | 13.00 |
| 14 | 14.00 |
| 15 | 15.00 |
| 16 | 16.00 |
| 17 | 17.00 |
| 18 | 18.00 |

| Length | L (Length Code) ±0.13 |
|--------|-----------------------|
| 19 | 19.00 |
| 20 | 20.00 |
| 21 | 21.00 |
| 22 | 22.00 |
| 23 | 23.00 |
| 24 | 24.00 |
| 25 | 25.00 |
| 28 | 28.00 |
| 31 | 31.00 |
| 34 | 34.00 |
| 37 | 37.00 |
| 40 | 40.00 |
| 43 | 43.00 |
| 46 | 46.00 |
| 49 | 49.00 |
| 52 | 52.00 |

MATERIAL

| Material Code | Material Description |
|---------------|----------------------|
| STL | Carbon Steel |
| SS | Stainless Steel |
| AL | Aluminum |
| BRS | Brass |
| NYV0 | Nylon UL-94 V0 |
| NYV2 | Nylon UL-94-V2 |

FINISH

| Finish Code | Finish Description |
|-------------|-----------------------------|
| Z | Zinc with Clear Chromate |
| Z-BLK | Zinc with Black Chromate |
| Z-YEL | Zinc with Yellow Chromate |
| NI | Electroplated Bright Nickel |
| BLK-OX | Black Oxide |
| CF | Clear Chemical Film |
| CF-GOLD | Gold Chemical Film |
| P | Passivated |
| PLN | Plain |
| TIN | Electroplated Bright Tin |
| TIN-MATTE | Electroplated Matte Tin |

All dimensions in millimeters.
 Custom sizes, materials, and finishes available

RST 13mm Round Female-Female Standoffs