

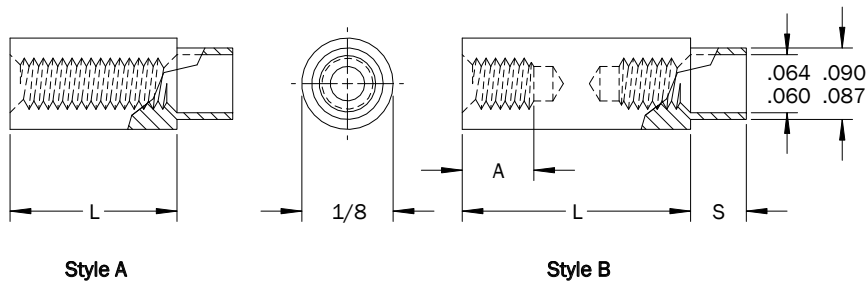
1/8 Round Swage Standoffs

PART DESCRIPTION EXAMPLE

RSST1/8 — 080 X .500 — C X .090 — STL — Z

T
T
T
T
T

Thread Code Length Code Shank Length Code Material Code Finish Code



THREAD

Thread	Thread Code	A Min. (1)
0-80	080	.187

(1) A. Min. may be reduced for shorter standoff lengths.

STYLE

Thread	Material Code			
	STL, AL, BRS		SS	
	Style A	Style B	Style A	Style B
Length				
0-80	Thru 3/8	Over 3/8	Thru 1/4	Over 1/4

SHANK

Panel Thickness	S ±.003	Shank Length Code
1/32	.075	A
1/16	.105	B
3/32	.135	C
1/8	.165	D
3/16	.230	E
1/4	.290	F

INSTALLATION TOOLING

Length	Anvil Part Number	Swage Punch Part Number	Flare Punch Part Number
3/32-3/16	TL1467	TL1460	TL1289
7/32-7/16	TL1468	TL1460	TL1289
15/32-11/16	TL1469	TL1460	TL1289
23/32-1	TL1470	TL1460	TL1289

All dimensions in inches.
Custom sizes, materials, and finishes available

1/8 Round Swage Standoffs

LENGTH

Length	L (Length Code) ±.005
3/32	.094
1/8	.125
5/32	.156
3/16	.187
7/32	.219
1/4	.250
9/32	.281
5/16	.312
11/32	.344
3/8	.375
13/32	.406
7/16	.437
15/32	.469
1/2	.500
17/32	.531

Length	L (Length Code) ±.005
9/16	.562
19/32	.594
5/8	.625
21/32	.656
11/16	.687
23/32	.719
3/4	.750
25/32	.781
13/16	.812
27/32	.844
7/8	.875
29/32	.906
15/16	.937
31/32	.969
1	1.000

MATERIAL

Material Code	Material Description
STL	Carbon Steel
SS	Stainless Steel
AL	Aluminum
BRS	Brass

FINISH

Finish Code	Finish Description
Z	Zinc with Clear Chromate
Z-BLK	Zinc with Black Chromate
Z-YEL	Zinc with Yellow Chromate
NI	Electroplated Bright Nickel
BLK-OX	Black Oxide
CF	Clear Chemical Film
CF-GOLD	Gold Chemical Film
P	Passivated
PLN	Plain
TIN	Electroplated Bright Tin
TIN-MATTE	Electroplated Matte Tin

RSST 1/8 Round Swage Standoff

All dimensions in inches.
Custom sizes, materials, and finishes available

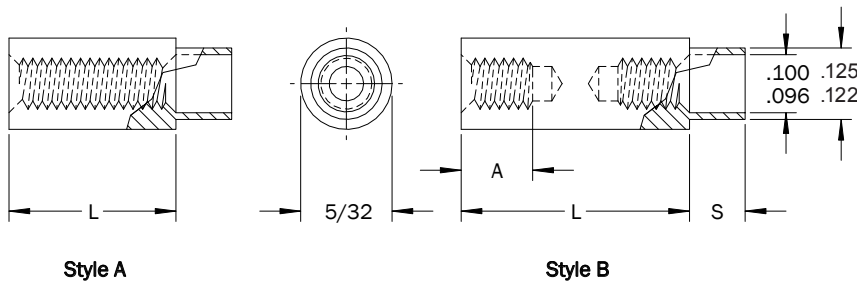
5/32 Round Swage Standoffs

PART DESCRIPTION EXAMPLE

RSST5/32 — 256 X .500 — C X .125 — STL — Z

T
T
T
T
T

Thread Code
Length Code
Shank Length Code
Material Code
Finish Code



THREAD

Thread	Thread Code	A Min. (1)
0-80	080	.187
2-56	256	.187

(1) A. Min. may be reduced for shorter standoff lengths.

STYLE

Thread	Material Code			
	STL, AL, BRS		SS	
	Style A	Style B	Style A	Style B
Length				
0-80	Thru 3/8	Over 3/8	Thru 1/4	Over 1/4
2-56	Thru 3/4	Over 3/4	Thru 5/8	Over 5/8

SHANK

Panel Thickness	S ±.003	Shank Length Code
1/32	.075	A
1/16	.105	B
3/32	.135	C
1/8	.165	D
3/16	.230	E
1/4	.290	F

INSTALLATION TOOLING

Length	Anvil Part Number	Swage Punch Part Number	Flare Punch Part Number
3/32-3/16	TL1429	TL1405	TL1289
7/32-7/16	TL1430	TL1405	TL1289
15/32-11/16	TL1431	TL1405	TL1289
23/32-1	TL1471	TL1405	TL1289

RSST 5/32 Round Swage Standoff

All dimensions in inches.
Custom sizes, materials, and finishes available

5/32 Round Swage Standoffs

LENGTH

Length	L (Length Code) ±.005
3/32	.094
1/8	.125
5/32	.156
3/16	.187
7/32	.219
1/4	.250
9/32	.281
5/16	.312
11/32	.344
3/8	.375
13/32	.406
7/16	.437
15/32	.469
1/2	.500
17/32	.531

Length	L (Length Code) ±.005
9/16	.562
19/32	.594
5/8	.625
21/32	.656
11/16	.687
23/32	.719
3/4	.750
25/32	.781
13/16	.812
27/32	.844
7/8	.875
29/32	.906
15/16	.937
31/32	.969
1	1.000

MATERIAL

Material Code	Material Description
STL	Carbon Steel
SS	Stainless Steel
AL	Aluminum
BRS	Brass

FINISH

Finish Code	Finish Description
Z	Zinc with Clear Chromate
Z-BLK	Zinc with Black Chromate
Z-YEL	Zinc with Yellow Chromate
NI	Electroplated Bright Nickel
BLK-OX	Black Oxide
CF	Clear Chemical Film
CF-GOLD	Gold Chemical Film
P	Passivated
PLN	Plain
TIN	Electroplated Bright Tin
TIN-MATTE	Electroplated Matte Tin

RSST 5/32 Round Swage Standoff

All dimensions in inches.
Custom sizes, materials, and finishes available

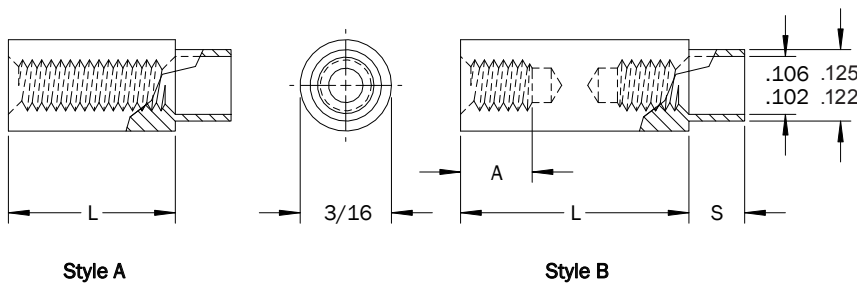
3/16 Round Swage Standoffs - .125 Shank Diameter

PART DESCRIPTION EXAMPLE

RSST3/16 — 256 X .500 — C X .125 — STL — Z

T
T
T
T
T

Thread Code Length Code Shank Length Code Material Code Finish Code



THREAD

Thread	Thread Code	A Min. (1)
2-56	256	.187

(1) A. Min. may be reduced for shorter standoff lengths.

STYLE

Thread	Material Code			
	STL, AL, BRS		SS	
	Style A	Style B	Style A	Style B
Length				
2-56	Thru 3/4	Over 3/4	Thru 5/8	Over 5/8

SHANK

Panel Thickness	S ±.003	Shank Length Code
1/32	.075	A
1/16	.105	B
3/32	.135	C
1/8	.165	D
3/16	.230	E
1/4	.290	F

INSTALLATION TOOLING

Length	Anvil Part Number	Swage Punch Part Number	Flare Punch Part Number
3/32-3/16	TL1432	TL1405	TL1289
7/32-7/16	TL1433	TL1405	TL1289
15/32-11/16	TL1434	TL1405	TL1289
23/32-1	TL1435	TL1405	TL1289

All dimensions in inches.
Custom sizes, materials, and finishes available

3/16 Round Swage Standoffs - .125 Shank Diameter

LENGTH

Length	L (Length Code) ±.005
3/32	.094
1/8	.125
5/32	.156
3/16	.187
7/32	.219
1/4	.250
9/32	.281
5/16	.312
11/32	.344
3/8	.375
13/32	.406
7/16	.437
15/32	.469
1/2	.500
17/32	.531

Length	L (Length Code) ±.005
9/16	.562
19/32	.594
5/8	.625
21/32	.656
11/16	.687
23/32	.719
3/4	.750
25/32	.781
13/16	.812
27/32	.844
7/8	.875
29/32	.906
15/16	.937
31/32	.969
1	1.000

MATERIAL

Material Code	Material Description
STL	Carbon Steel
SS	Stainless Steel
AL	Aluminum
BRS	Brass

FINISH

Finish Code	Finish Description
Z	Zinc with Clear Chromate
Z-BLK	Zinc with Black Chromate
Z-YEL	Zinc with Yellow Chromate
NI	Electroplated Bright Nickel
BLK-OX	Black Oxide
CF	Clear Chemical Film
CF-GOLD	Gold Chemical Film
P	Passivated
PLN	Plain
TIN	Electroplated Bright Tin
TIN-MATTE	Electroplated Matte Tin

RSST 3/16 Round Swage Standoff - .125 Shank Diameter

All dimensions in inches.
Custom sizes, materials, and finishes available

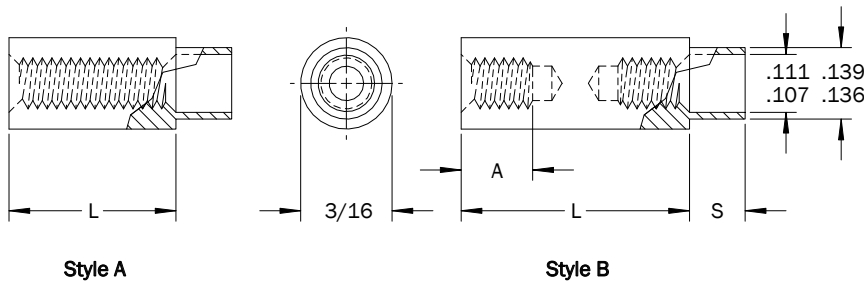
3/16 Round Swage Standoffs - .139 Shank Diameter

PART DESCRIPTION EXAMPLE

RSST3/16 — 256 X .500 — C X .139 — STL — Z

T
T
T
T
T

Thread Code Length Code Shank Length Code Material Code Finish Code



THREAD

Thread	Thread Code	A Min. (1)
2-56	256	.187

(1) A. Min. may be reduced for shorter standoff lengths.

STYLE

Thread	Material Code			
	STL, AL, BRS		SS	
	Style A	Style B	Style A	Style B
Length				
2-56	Thru 3/4	Over 3/4	Thru 5/8	Over 5/8

SHANK

Panel Thickness	S ±.003	Shank Length Code
1/32	.075	A
1/16	.105	B
3/32	.135	C
1/8	.165	D
3/16	.230	E
1/4	.290	F

INSTALLATION TOOLING

Length	Anvil Part Number	Swage Punch Part Number	Flare Punch Part Number
3/32-3/16	TL1432	TL1406	TL1289
7/32-7/16	TL1433	TL1406	TL1289
15/32-11/16	TL1434	TL1406	TL1289
23/32-1	TL1435	TL1406	TL1289

All dimensions in inches.
Custom sizes, materials, and finishes available

RSST 3/16 Round Swage Standoff - .139 Shank Diameter

3/16 Round Swage Standoffs - .139 Shank Diameter

LENGTH

Length	L (Length Code) ±.005
3/32	.094
1/8	.125
5/32	.156
3/16	.187
7/32	.219
1/4	.250
9/32	.281
5/16	.312
11/32	.344
3/8	.375
13/32	.406
7/16	.437
15/32	.469
1/2	.500
17/32	.531

Length	L (Length Code) ±.005
9/16	.562
19/32	.594
5/8	.625
21/32	.656
11/16	.687
23/32	.719
3/4	.750
25/32	.781
13/16	.812
27/32	.844
7/8	.875
29/32	.906
15/16	.937
31/32	.969
1	1.000

MATERIAL

Material Code	Material Description
STL	Carbon Steel
SS	Stainless Steel
AL	Aluminum
BRS	Brass

FINISH

Finish Code	Finish Description
Z	Zinc with Clear Chromate
Z-BLK	Zinc with Black Chromate
Z-YEL	Zinc with Yellow Chromate
NI	Electroplated Bright Nickel
BLK-OX	Black Oxide
CF	Clear Chemical Film
CF-GOLD	Gold Chemical Film
P	Passivated
PLN	Plain
TIN	Electroplated Bright Tin
TIN-MATTE	Electroplated Matte Tin

RSST 3/16 Round Swage Standoff - .139 Shank Diameter

All dimensions in inches.
Custom sizes, materials, and finishes available

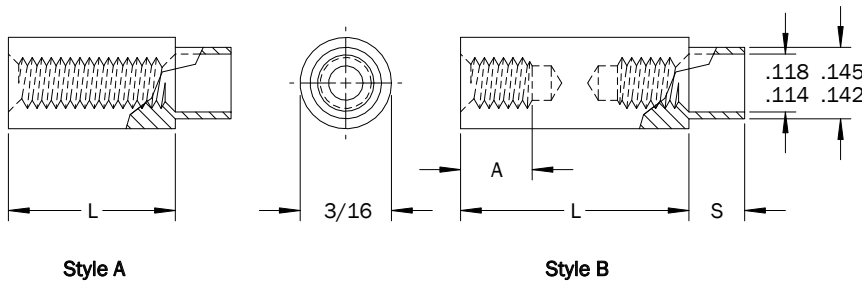
3/16 Round Swage Standoffs - .145 Shank Diameter

PART DESCRIPTION EXAMPLE

RSST3/16 — 256 X .500 — C X .145 — STL — Z

T
T
T
T
T

Thread Code Length Code Shank Length Code Material Code Finish Code



THREAD

Thread	Thread Code	A Min. (1)
2-56	256	.187
4-40	440	.250

(1) A. Min. may be reduced for shorter standoff lengths.

STYLE

Thread	Material Code			
	STL, AL, BRS		SS	
	Style A	Style B	Style A	Style B
Length				
2-56	Thru 3/4	Over 3/4	Thru 5/8	Over 5/8
4-40	Thru 1	Over 1	Thru 3/4	Over 3/4

SHANK

Panel Thickness	S ±.003	Shank Length Code
1/32	.075	A
1/16	.105	B
3/32	.135	C
1/8	.165	D
3/16	.230	E
1/4	.290	F

INSTALLATION TOOLING

Length	Anvil Part Number	Swage Punch Part Number	Flare Punch Part Number
3/32-3/16	TL1432	TL1407	TL1289
7/32-7/16	TL1433	TL1407	TL1289
15/32-11/16	TL1434	TL1407	TL1289
23/32-1	TL1435	TL1407	TL1289

All dimensions in inches.
Custom sizes, materials, and finishes available

3/16 Round Swage Standoffs - .145 Shank Diameter

LENGTH

Length	L (Length Code) ±.005
3/32	.094
1/8	.125
5/32	.156
3/16	.187
7/32	.219
1/4	.250
9/32	.281
5/16	.312
11/32	.344
3/8	.375
13/32	.406
7/16	.437
15/32	.469
1/2	.500
17/32	.531

Length	L (Length Code) ±.005
9/16	.562
19/32	.594
5/8	.625
21/32	.656
11/16	.687
23/32	.719
3/4	.750
25/32	.781
13/16	.812
27/32	.844
7/8	.875
29/32	.906
15/16	.937
31/32	.969
1	1.000

MATERIAL

Material Code	Material Description
STL	Carbon Steel
SS	Stainless Steel
AL	Aluminum
BRS	Brass

FINISH

Finish Code	Finish Description
Z	Zinc with Clear Chromate
Z-BLK	Zinc with Black Chromate
Z-YEL	Zinc with Yellow Chromate
NI	Electroplated Bright Nickel
BLK-OX	Black Oxide
CF	Clear Chemical Film
CF-GOLD	Gold Chemical Film
P	Passivated
PLN	Plain
TIN	Electroplated Bright Tin
TIN-MATTE	Electroplated Matte Tin

RSST 3/16 Round Swage Standoff - .145 Shank Diameter

All dimensions in inches.
Custom sizes, materials, and finishes available

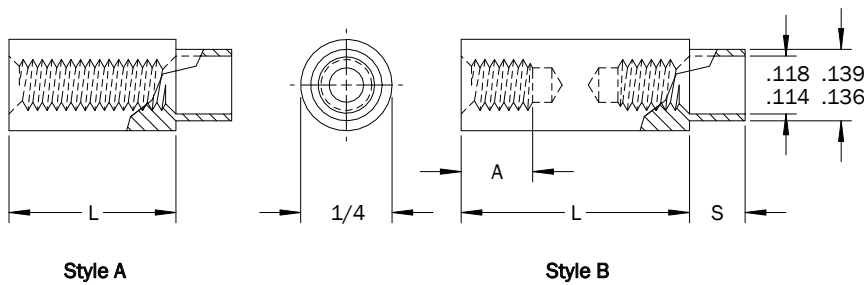
1/4 Round Swage Standoffs - .139 Shank Diameter

PART DESCRIPTION EXAMPLE

RSST1/4 — 440 X 1.000 — C X .139 — STL — Z

T
T
T
T
T

Thread Code Length Code Shank Length Code Material Code Finish Code



THREAD

Thread	Thread Code	A Min. (1)
2-56	256	.187
4-40	440	.250

(1) A. Min. may be reduced for shorter standoff lengths.

STYLE

Thread	Material Code			
	STL, AL, BRS		SS	
	Style A	Style B	Style A	Style B
Length				
2-56	Thru 3/4	Over 3/4	Thru 5/8	Over 5/8
4-40	Thru 1	Over 1	Thru 3/4	Over 3/4

SHANK

Panel Thickness	S ±.003	Shank Length Code
1/32	.075	A
1/16	.105	B
3/32	.135	C
1/8	.165	D
3/16	.230	E
1/4	.290	F

INSTALLATION TOOLING

Length	Anvil Part Number	Swage Punch Part Number	Flare Punch Part Number
3/32-3/16	TL1436	TL1408	TL1289
7/32-7/16	TL1437	TL1408	TL1289
15/32-11/16	TL1438	TL1408	TL1289
23/32-2	TL1439	TL1408	TL1289

All dimensions in inches.
Custom sizes, materials, and finishes available

1/4 Round Swage Standoffs - .139 Shank Diameter

LENGTH

Length	L (Length Code) ±.005
3/32	.094
1/8	.125
5/32	.156
3/16	.187
7/32	.219
1/4	.250
9/32	.281
5/16	.312
11/32	.344
3/8	.375
13/32	.406
7/16	.437
15/32	.469
1/2	.500
17/32	.531
9/16	.562
19/32	.594
5/8	.625
21/32	.656
11/16	.687
23/32	.719
3/4	.750
25/32	.781

Length	L (Length Code) ±.005
13/16	.812
27/32	.844
7/8	.875
29/32	.906
15/16	.937
31/32	.969
1	1.000
1-1/16	1.063
1-1/8	1.125
1-3/16	1.187
1-1/4	1.250
1-5/16	1.312
1-3/8	1.375
1-7/16	1.437
1-1/2	1.500
1-9/16	1.562
1-5/8	1.625
1-11/16	1.687
1-3/4	1.750
1-13/16	1.812
1-7/8	1.875
1-15/16	1.937
2	2.000

MATERIAL

Material Code	Material Description
STL	Carbon Steel
SS	Stainless Steel
AL	Aluminum
BRS	Brass

FINISH

Finish Code	Finish Description
Z	Zinc with Clear Chromate
Z-BLK	Zinc with Black Chromate
Z-YEL	Zinc with Yellow Chromate
NI	Electroplated Bright Nickel
BLK-OX	Black Oxide
CF	Clear Chemical Film
CF-GOLD	Gold Chemical Film
P	Passivated
PLN	Plain
TIN	Electroplated Bright Tin
TIN-MATTE	Electroplated Matte Tin

RSST 1/4 Round Swage Standoff - .139 Shank Diameter

All dimensions in inches.
Custom sizes, materials, and finishes available

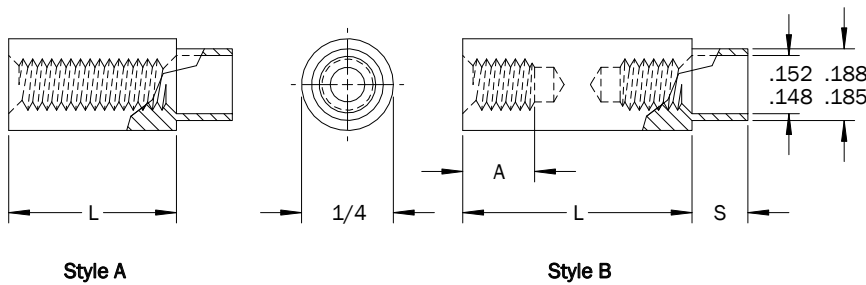
1/4 Round Swage Standoffs - .188 Shank Diameter

PART DESCRIPTION EXAMPLE

RSST1/4 — 440 X 1.000 — C X .188 — STL — Z

T
T
T
T
T

Thread Code Length Code Shank Length Code Material Code Finish Code



THREAD

Thread	Thread Code	A Min. (1)
2-56	256	.187
4-40	440	.250
6-32	632	.375

(1) A. Min. may be reduced for shorter standoff lengths.

STYLE

Thread	Material Code			
	STL, AL, BRS		SS	
	Style A	Style B	Style A	Style B
Length				
2-56	Thru 3/4	Over 3/4	Thru 5/8	Over 5/8
4-40	Thru 1	Over 1	Thru 3/4	Over 3/4
6-32	Thru 1	Over 1	Thru 1	Over 1

SHANK

Panel Thickness	S ±.003	Shank Length Code
1/32	.075	A
1/16	.105	B
3/32	.135	C
1/8	.165	D
3/16	.230	E
1/4	.290	F

INSTALLATION TOOLING

Length	Anvil Part Number	Swage Punch Part Number	Flare Punch Part Number
3/32-3/16	TL1436	TL1197	TL1289
7/32-7/16	TL1437	TL1197	TL1289
15/32-11/16	TL1438	TL1197	TL1289
23/32-2	TL1439	TL1197	TL1289

All dimensions in inches.
Custom sizes, materials, and finishes available

RSST 1/4 Round Swage Standoff - .188 Shank Diameter

1/4 Round Swage Standoffs - .188 Shank Diameter

LENGTH

Length	L (Length Code) ±.005
3/32	.094
1/8	.125
5/32	.156
3/16	.187
7/32	.219
1/4	.250
9/32	.281
5/16	.312
11/32	.344
3/8	.375
13/32	.406
7/16	.437
15/32	.469
1/2	.500
17/32	.531
9/16	.562
19/32	.594
5/8	.625
21/32	.656
11/16	.687
23/32	.719
3/4	.750
25/32	.781

Length	L (Length Code) ±.005
13/16	.812
27/32	.844
7/8	.875
29/32	.906
15/16	.937
31/32	.969
1	1.000
1-1/16	1.063
1-1/8	1.125
1-3/16	1.187
1-1/4	1.250
1-5/16	1.312
1-3/8	1.375
1-7/16	1.437
1-1/2	1.500
1-9/16	1.562
1-5/8	1.625
1-11/16	1.687
1-3/4	1.750
1-13/16	1.812
1-7/8	1.875
1-15/16	1.937
2	2.000

MATERIAL

Material Code	Material Description
STL	Carbon Steel
SS	Stainless Steel
AL	Aluminum
BRS	Brass

FINISH

Finish Code	Finish Description
Z	Zinc with Clear Chromate
Z-BLK	Zinc with Black Chromate
Z-YEL	Zinc with Yellow Chromate
NI	Electroplated Bright Nickel
BLK-OX	Black Oxide
CF	Clear Chemical Film
CF-GOLD	Gold Chemical Film
P	Passivated
PLN	Plain
TIN	Electroplated Bright Tin
TIN-MATTE	Electroplated Matte Tin

RSST 1/4 Round Swage Standoff - .188 Shank Diameter

All dimensions in inches.
Custom sizes, materials, and finishes available

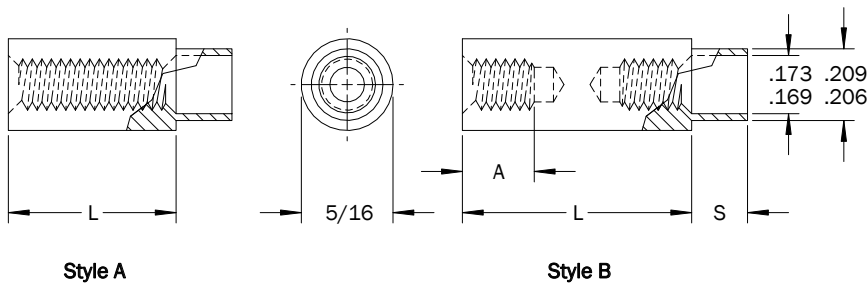
5/16 Round Swage Standoffs - .209 Shank Diameter

PART DESCRIPTION EXAMPLE

RSST5/16 — 632 X 1.000 — C X .209 — STL — Z

T
T
T
T
T

Thread Code Length Code Shank Length Code Material Code Finish Code



THREAD

Thread	Thread Code	A Min. (1)
4-40	440	.250
6-32	632	.375
8-32	832	.437

(1) A. Min. may be reduced for shorter standoff lengths.

STYLE

Thread	Material Code			
	STL, AL, BRS		SS	
	Style A	Style B	Style A	Style B
Length				
4-40	Thru 1	Over 1	Thru 3/4	Over 3/4
6-32	Thru 1	Over 1	Thru 1	Over 1
8-32	Thru 1	Over 1	Thru 1	Over 1

SHANK

Panel Thickness	S ±.003	Shank Length Code
1/32	.075	A
1/16	.105	B
3/32	.135	C
1/8	.165	D
3/16	.230	E
1/4	.290	F

INSTALLATION TOOLING

Length	Anvil Part Number	Swage Punch Part Number	Flare Punch Part Number
3/32-3/16	TL1440	TL1409	TL1289
7/32-7/16	TL1441	TL1409	TL1289
15/32-11/16	TL1442	TL1409	TL1289
23/32-2	TL1443	TL1409	TL1289

All dimensions in inches.
Custom sizes, materials, and finishes available

RSST 5/16 Round Swage Standoff - .209 Shank Diameter

5/16 Round Swage Standoffs - .209 Shank Diameter

LENGTH

Length	L (Length Code) ±.005
3/32	.094
1/8	.125
5/32	.156
3/16	.187
7/32	.219
1/4	.250
9/32	.281
5/16	.312
11/32	.344
3/8	.375
13/32	.406
7/16	.437
15/32	.469
1/2	.500
17/32	.531
9/16	.562
19/32	.594
5/8	.625
21/32	.656
11/16	.687
23/32	.719
3/4	.750
25/32	.781

Length	L (Length Code) ±.005
13/16	.812
27/32	.844
7/8	.875
29/32	.906
15/16	.937
31/32	.969
1	1.000
1-1/16	1.063
1-1/8	1.125
1-3/16	1.187
1-1/4	1.250
1-5/16	1.312
1-3/8	1.375
1-7/16	1.437
1-1/2	1.500
1-9/16	1.562
1-5/8	1.625
1-11/16	1.687
1-3/4	1.750
1-13/16	1.812
1-7/8	1.875
1-15/16	1.937
2	2.000

MATERIAL

Material Code	Material Description
STL	Carbon Steel
SS	Stainless Steel
AL	Aluminum
BRS	Brass

FINISH

Finish Code	Finish Description
Z	Zinc with Clear Chromate
Z-BLK	Zinc with Black Chromate
Z-YEL	Zinc with Yellow Chromate
NI	Electroplated Bright Nickel
BLK-OX	Black Oxide
CF	Clear Chemical Film
CF-GOLD	Gold Chemical Film
P	Passivated
PLN	Plain
TIN	Electroplated Bright Tin
TIN-MATTE	Electroplated Matte Tin

RSST 5/16 Round Swage Standoff - .209 Shank Diameter

All dimensions in inches.
Custom sizes, materials, and finishes available

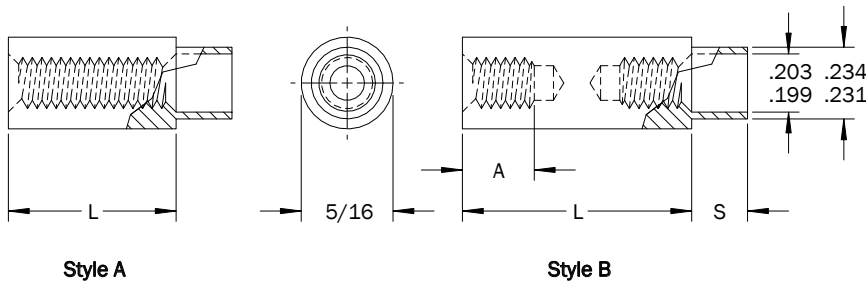
5/16 Round Swage Standoffs - .234 Shank Diameter

PART DESCRIPTION EXAMPLE

RSST5/16 — 832 X 1.000 — C X .234 — STL — Z

T
T
T
T
T

Thread Code Length Code Shank Length Code Material Code Finish Code



RSST 5/16 Round Swage Standoff - .234 Shank Diameter

THREAD

Thread	Thread Code	A Min. (1)
4-40	440	.250
6-32	632	.375
8-32	832	.437
10-32	1032	.500

(1) A. Min. may be reduced for shorter standoff lengths.

STYLE

Thread	Material Code			
	STL, AL, BRS		SS	
	Style A	Style B	Style A	Style B
Length				
4-40	Thru 1	Over 1	Thru 3/4	Over 3/4
6-32	Thru 1	Over 1	Thru 1	Over 1
8-32	Thru 1	Over 1	Thru 1	Over 1
10-32	Thru 1-1/8	Over 1-1/8	Thru 1	Over 1

SHANK

Panel Thickness	S ±.003	Shank Length Code
1/32	.075	A
1/16	.105	B
3/32	.135	C
1/8	.165	D
3/16	.230	E
1/4	.290	F

INSTALLATION TOOLING

Length	Anvil Part Number	Swage Punch Part Number	Flare Punch Part Number
3/32-3/16	TL1440	TL1285	TL1289
7/32-7/16	TL1441	TL1285	TL1289
15/32-11/16	TL1442	TL1285	TL1289
23/32-2	TL1443	TL1285	TL1289

All dimensions in inches.
Custom sizes, materials, and finishes available

5/16 Round Swage Standoffs - .234 Shank Diameter

LENGTH

Length	L (Length Code) ±.005
3/32	.094
1/8	.125
5/32	.156
3/16	.187
7/32	.219
1/4	.250
9/32	.281
5/16	.312
11/32	.344
3/8	.375
13/32	.406
7/16	.437
15/32	.469
1/2	.500
17/32	.531
9/16	.562
19/32	.594
5/8	.625
21/32	.656
11/16	.687
23/32	.719
3/4	.750
25/32	.781

Length	L (Length Code) ±.005
13/16	.812
27/32	.844
7/8	.875
29/32	.906
15/16	.937
31/32	.969
1	1.000
1-1/16	1.063
1-1/8	1.125
1-3/16	1.187
1-1/4	1.250
1-5/16	1.312
1-3/8	1.375
1-7/16	1.437
1-1/2	1.500
1-9/16	1.562
1-5/8	1.625
1-11/16	1.687
1-3/4	1.750
1-13/16	1.812
1-7/8	1.875
1-15/16	1.937
2	2.000

MATERIAL

Material Code	Material Description
STL	Carbon Steel
SS	Stainless Steel
AL	Aluminum
BRS	Brass

FINISH

Finish Code	Finish Description
Z	Zinc with Clear Chromate
Z-BLK	Zinc with Black Chromate
Z-YEL	Zinc with Yellow Chromate
NI	Electroplated Bright Nickel
BLK-OX	Black Oxide
CF	Clear Chemical Film
CF-GOLD	Gold Chemical Film
P	Passivated
PLN	Plain
TIN	Electroplated Bright Tin
TIN-MATTE	Electroplated Matte Tin

RSST 5/16 Round Swage Standoff - .234 Shank Diameter

All dimensions in inches.
Custom sizes, materials, and finishes available

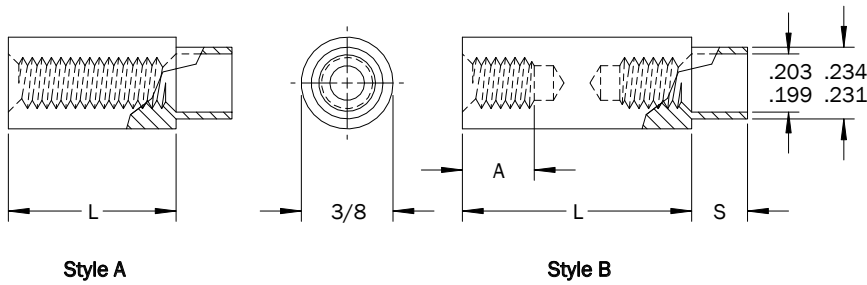
3/8 Round Swage Standoffs

PART DESCRIPTION EXAMPLE

RSST3/8 — 832 X 1.000 — C X .234 — STL — Z

T
T
T
T
T

Thread Code Length Code Shank Length Code Material Code Finish Code



THREAD

Thread	Thread Code	A Min. (1)
4-40	440	.250
6-32	632	.375
8-32	832	.437
10-32	1032	.500

(1) A. Min. may be reduced for shorter standoff lengths.

STYLE

Thread	Material Code			
	STL, AL, BRS		SS	
	Style A	Style B	Style A	Style B
Length				
4-40	Thru 1	Over 1	Thru 3/4	Over 3/4
6-32	Thru 1	Over 1	Thru 1	Over 1
8-32	Thru 1	Over 1	Thru 1	Over 1
10-32	Thru 1-1/8	Over 1-1/8	Thru 1	Over 1

SHANK

Panel Thickness	S ±.003	Shank Length Code
1/32	.075	A
1/16	.105	B
3/32	.135	C
1/8	.165	D
3/16	.230	E
1/4	.290	F

INSTALLATION TOOLING

Length	Anvil Part Number	Swage Punch Part Number	Flare Punch Part Number
3/32-3/16	TL1444	TL1285	TL1289
7/32-7/16	TL1445	TL1285	TL1289
15/32-11/16	TL1446	TL1285	TL1289
23/32-2	TL1447	TL1285	TL1289

All dimensions in inches.
Custom sizes, materials, and finishes available

RSST 3/8 Round Swage Standoff

3/8 Round Swage Standoffs

LENGTH

Length	L (Length Code) ±.005
3/32	.094
1/8	.125
5/32	.156
3/16	.187
7/32	.219
1/4	.250
9/32	.281
5/16	.312
11/32	.344
3/8	.375
13/32	.406
7/16	.437
15/32	.469
1/2	.500
17/32	.531
9/16	.562
19/32	.594
5/8	.625
21/32	.656
11/16	.687
23/32	.719
3/4	.750
25/32	.781

Length	L (Length Code) ±.005
13/16	.812
27/32	.844
7/8	.875
29/32	.906
15/16	.937
31/32	.969
1	1.000
1-1/16	1.063
1-1/8	1.125
1-3/16	1.187
1-1/4	1.250
1-5/16	1.312
1-3/8	1.375
1-7/16	1.437
1-1/2	1.500
1-9/16	1.562
1-5/8	1.625
1-11/16	1.687
1-3/4	1.750
1-13/16	1.812
1-7/8	1.875
1-15/16	1.937
2	2.000

MATERIAL

Material Code	Material Description
STL	Carbon Steel
SS	Stainless Steel
AL	Aluminum
BRS	Brass

FINISH

Finish Code	Finish Description
Z	Zinc with Clear Chromate
Z-BLK	Zinc with Black Chromate
Z-YEL	Zinc with Yellow Chromate
NI	Electroplated Bright Nickel
BLK-OX	Black Oxide
CF	Clear Chemical Film
CF-GOLD	Gold Chemical Film
P	Passivated
PLN	Plain
TIN	Electroplated Bright Tin
TIN-MATTE	Electroplated Matte Tin

RSST 3/8 Round Swage Standoff

All dimensions in inches.
Custom sizes, materials, and finishes available

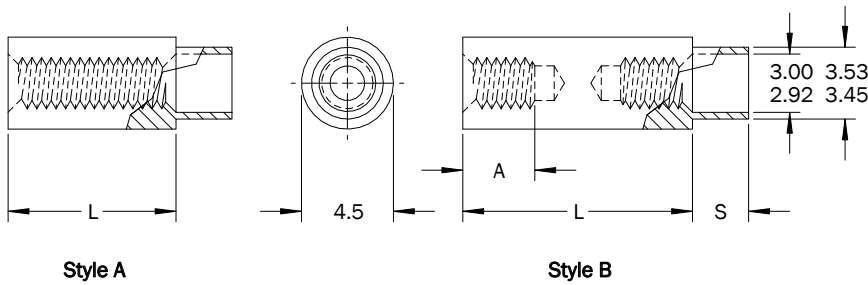
4.5mm Round Swage Standoffs

PART DESCRIPTION EXAMPLE

RSST4.5 — M2.5 X 12.00 — C X 3.53 — STL — Z

T
T
T
T
T

Thread Code Length Code Shank Length Code Material Code Finish Code



THREAD

Thread	Thread Code	A Min. (1)
M1.6 x 0.35	M1.6	4.76
M2 x 0.4	M2	4.76
M2.5 x 0.45	M25	4.76
M3 x 0.5	M3	6.35

(1) A. Min. may be reduced for shorter standoff lengths.

STYLE

Thread	Material Code			
	STL, AL, BRS		SS	
	Style A	Style B	Style A	Style B
Length				
M1.6 x 0.35	Thru 9.5	Over 9.5	Thru 6.4	Over 6.4
M2 x 0.4	Thru 9.5	Over 9.5	Thru 6.4	Over 6.4
M2.5 x 0.45	Thru 19.0	Over 19.0	Thru 16.0	Over 16.0
M3 x 0.5	Thru 25.0	Over 25.0	Thru 19.0	Over 19.0

SHANK

Panel Thickness	S ±0.08	Shank Length Code
0.8	1.9	A
1.6	2.7	B
2.4	3.4	C
3.2	4.2	D
4.8	5.8	E
6.4	7.4	F

INSTALLATION TOOLING

Length	Anvil Part Number	Swage Punch Part Number	Flare Punch Part Number
3-5	TL1448	TL1408	TL1289
6-12	TL1449	TL1408	TL1289
13-18	TL1450	TL1408	TL1289
19-25	TL1451	TL1408	TL1289

All dimensions in inches.
Custom sizes, materials, and finishes available

RSST 4.5mm Round Swage Standoff

4.5mm Round Swage Standoffs

LENGTH

Length	L (Length Code) ±0.13
3	3.00
4	4.00
5	5.00
6	6.00
7	7.00
8	8.00
9	9.00
10	10.00
11	11.00
12	12.00
13	13.00
14	14.00

Length	L (Length Code) ±0.13
15	15.00
16	16.00
17	17.00
18	18.00
19	19.00
20	20.00
21	21.00
22	22.00
23	23.00
24	24.00
25	25.00

MATERIAL

Material Code	Material Description
STL	Carbon Steel
SS	Stainless Steel
AL	Aluminum
BRS	Brass

FINISH

Finish Code	Finish Description
Z	Zinc with Clear Chromate
Z-BLK	Zinc with Black Chromate
Z-YEL	Zinc with Yellow Chromate
NI	Electroplated Bright Nickel
BLK-OX	Black Oxide
CF	Clear Chemical Film
CF-GOLD	Gold Chemical Film
P	Passivated
PLN	Plain
TIN	Electroplated Bright Tin
TIN-MATTE	Electroplated Matte Tin

RSST 4.5mm Round Swage Standoff

All dimensions in inches.
Custom sizes, materials, and finishes available

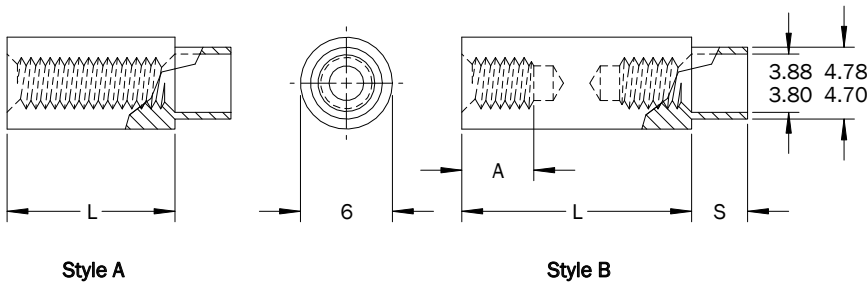
6mm Round Swage Standoffs

PART DESCRIPTION EXAMPLE

RSST6 — M3 X 12.00 — C X 4.78 — STL — Z

T
T
T
T
T

Thread Code Length Code Shank Length Code Material Code Finish Code



THREAD

Thread	Thread Code	A Min. (1)
M3 x 0.5	M3	6.35
M3.5 x 0.5	M35	9.53

(1) A. Min. may be reduced for shorter standoff lengths.

STYLE

Thread	Material Code			
	STL, AL, BRS		SS	
	Style A	Style B	Style A	Style B
Length				
M3 x 0.5	Thru 25	Over 25	Thru 19	Over 19
M3.5 x 0.6	Thru 25	Over 25	Thru 25	Over 25

SHANK

Panel Thickness	S ±0.08	Shank Length Code
0.8	1.9	A
1.6	2.7	B
2.4	3.4	C
3.2	4.2	D
4.8	5.8	E
6.4	7.4	F

INSTALLATION TOOLING

Length	Anvil Part Number	Swage Punch Part Number	Flare Punch Part Number
3-5	TL1452	TL1197	TL1289
6-12	TL1453	TL1197	TL1289
13-18	TL1454	TL1197	TL1289
19-25	TL1455	TL1197	TL1289

All dimensions in inches.
Custom sizes, materials, and finishes available

RSST 6mm Round Swage Standoff

6mm Round Swage Standoffs

LENGTH

Length	L (Length Code) ±0.13
3	3.00
4	4.00
5	5.00
6	6.00
7	7.00
8	8.00
9	9.00
10	10.00
11	11.00
12	12.00
13	13.00
14	14.00

Length	L (Length Code) ±0.13
15	15.00
16	16.00
17	17.00
18	18.00
19	19.00
20	20.00
21	21.00
22	22.00
23	23.00
24	24.00
25	25.00

MATERIAL

Material Code	Material Description
STL	Carbon Steel
SS	Stainless Steel
AL	Aluminum
BRS	Brass

FINISH

Finish Code	Finish Description
Z	Zinc with Clear Chromate
Z-BLK	Zinc with Black Chromate
Z-YEL	Zinc with Yellow Chromate
NI	Electroplated Bright Nickel
BLK-OX	Black Oxide
CF	Clear Chemical Film
CF-GOLD	Gold Chemical Film
P	Passivated
PLN	Plain
TIN	Electroplated Bright Tin
TIN-MATTE	Electroplated Matte Tin

RSST 6mm Round Swage Standoff

All dimensions in inches.
Custom sizes, materials, and finishes available

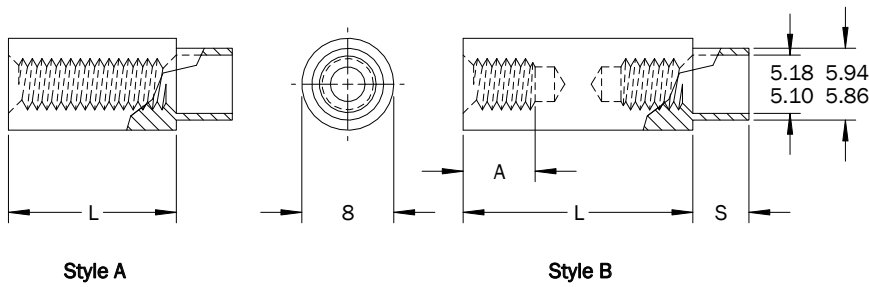
8mm Round Swage Standoffs

PART DESCRIPTION EXAMPLE

RSST8 — M3.5 X 12.00 — C X 5.94 — STL — Z

T
T
T
T
T

Thread Code Length Code Shank Length Code Material Code Finish Code



THREAD

Thread	Thread Code	A Min. (1)
M3.5 x 0.6	M35	9.53
M4 x 0.7	M4	11.10

(1) A. Min. may be reduced for shorter standoff lengths

STYLE

Thread	Material Code			
	STL, AL, BRS		SS	
	Style A	Style B	Style A	Style B
Length				
M3.5 x 0.6	Thru 25	Over 25	Thru 25	Over 25
M4 x 0.7	Thru 25	Over 25	Thru 25	Over 25

SHANK

Panel Thickness	S ±0.08	Shank Length Code
0.8	1.9	A
1.6	2.7	B
2.4	3.4	C
3.2	4.2	D
4.8	5.8	E
6.4	7.4	F

INSTALLATION TOOLING

Length	Anvil Part Number	Swage Punch Part Number	Flare Punch Part Number
3-5	TL1456	TL1285	TL1289
6-12	TL1457	TL1285	TL1289
13-18	TL1458	TL1285	TL1289
19-25	TL1459	TL1285	TL1289

All dimensions in inches.
Custom sizes, materials, and finishes available

RSST 8mm Round Swage Standoff

8mm Round Swage Standoffs

LENGTH

Length	L (Length Code) ±0.13
3	3.00
4	4.00
5	5.00
6	6.00
7	7.00
8	8.00
9	9.00
10	10.00
11	11.00
12	12.00
13	13.00
14	14.00

Length	L (Length Code) ±0.13
15	15.00
16	16.00
17	17.00
18	18.00
19	19.00
20	20.00
21	21.00
22	22.00
23	23.00
24	24.00
25	25.00

MATERIAL

Material Code	Material Description
STL	Carbon Steel
SS	Stainless Steel
AL	Aluminum
BRS	Brass

FINISH

Finish Code	Finish Description
Z	Zinc with Clear Chromate
Z-BLK	Zinc with Black Chromate
Z-YEL	Zinc with Yellow Chromate
NI	Electroplated Bright Nickel
BLK-OX	Black Oxide
CF	Clear Chemical Film
CF-GOLD	Gold Chemical Film
P	Passivated
PLN	Plain
TIN	Electroplated Bright Tin
TIN-MATTE	Electroplated Matte Tin

RSST 8mm Round Swage Standoff

All dimensions in inches.
Custom sizes, materials, and finishes available

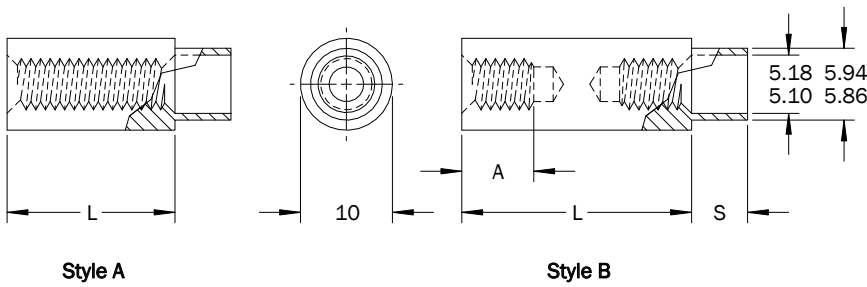
10mm Round Swage Standoffs

PART DESCRIPTION EXAMPLE

RSST10 — M4 X 12.00 — C X 5.94 — STL — Z

T
T
T
T
T

Thread Code Length Code Shank Length Code Material Code Finish Code



THREAD

Thread	Thread Code	A Min. (1)
M3.5 x 0.6	M35	9.53
M4 x 0.7	M4	11.10
M5 x 0.8	M5	12.70

(1) A. Min. may be reduced for shorter standoff lengths.

STYLE

Thread	Material Code			
	STL, AL, BRS		SS	
	Style A	Style B	Style A	Style B
Length				
M3.5 x 0.6	Thru 25	Over 25	Thru 25	Over 25
M4 x 0.7	Thru 25	Over 25	Thru 25	Over 25
M5 x 0.8	Thru 28	Over 28	Thru 25	Over 25

SHANK

Panel Thickness	S ±0.08	Shank Length Code
0.8	1.9	A
1.6	2.7	B
2.4	3.4	C
3.2	4.2	D
4.8	5.8	E
6.4	7.4	F

INSTALLATION TOOLING

Length	Anvil Part Number	Swage Punch Part Number	Flare Punch Part Number
3-5	TL1472	TL1285	TL1289
6-12	TL1473	TL1285	TL1289
13-18	TL1474	TL1285	TL1289
19-25	TL1475	TL1285	TL1289

All dimensions in inches.
Custom sizes, materials, and finishes available

RSST 10mm Round Swage Standoff

10mm Round Swage Standoffs

LENGTH

Length	L (Length Code) ±0.13
3	3.00
4	4.00
5	5.00
6	6.00
7	7.00
8	8.00
9	9.00
10	10.00
11	11.00
12	12.00
13	13.00
14	14.00

Length	L (Length Code) ±0.13
15	15.00
16	16.00
17	17.00
18	18.00
19	19.00
20	20.00
21	21.00
22	22.00
23	23.00
24	24.00
25	25.00

MATERIAL

Material Code	Material Description
STL	Carbon Steel
SS	Stainless Steel
AL	Aluminum
BRS	Brass

FINISH

Finish Code	Finish Description
Z	Zinc with Clear Chromate
Z-BLK	Zinc with Black Chromate
Z-YEL	Zinc with Yellow Chromate
NI	Electroplated Bright Nickel
BLK-OX	Black Oxide
CF	Clear Chemical Film
CF-GOLD	Gold Chemical Film
P	Passivated
PLN	Plain
TIN	Electroplated Bright Tin
TIN-MATTE	Electroplated Matte Tin

RSST 10mm Round Swage Standoff

All dimensions in inches.
Custom sizes, materials, and finishes available