

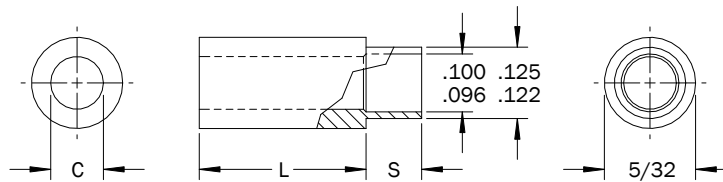
## 5/32 Round Swage Spacers

### PART DESCRIPTION EXAMPLE

RSSP5/32 — 2 X .250 — C — .125 — STL — Z

T
T
T
T
T

Clearance Hole Code    Length Code    Shank Length Code    Material Code    Finish Code



### CLEARANCE HOLE

C +.010 -.000	Clearance Hole Code
.062	0
.088	2

### SHANK

Panel Thickness	S ±.003	Shank Length Code
1/32	.075	A
1/16	.105	B
3/32	.135	C
1/8	.165	D
3/16	.230	E
1/4	.290	F

### FINISH

Finish Code	Finish Description
Z	Zinc with Clear Chromate
Z-BLK	Zinc with Black Chromate
Z-YEL	Zinc with Yellow Chromate
NI	Electroplated Bright Nickel
BLK-OX	Black Oxide
CF	Clear Chemical Film
CF-GOLD	Gold Chemical Film
P	Passivated
PLN	Plain
TIN	Electroplated Bright Tin
TIN-MATTE	Electroplated Matte Tin

### LENGTH

Length	L (Length Code) ±.005
3/32	.094
1/8	.125
5/32	.156
3/16	.187
7/32	.219
1/4	.250
9/32	.281
5/16	.312
11/32	.344
3/8	.375
13/32	.406
7/16	.437
15/32	.469
1/2	.500

### MATERIAL

Material Code	Material Description
STL	Carbon Steel
SS	Stainless Steel
AL	Aluminum
BRS	Brass

### INSTALLATION TOOLING

Length	Anvil Part Number	Swage Punch Part Number	Flare Punch Part Number
3/32–3/16	TL1429	TL1405	TL1586
7/32–7/16	TL1430	TL1405	TL1586
15/32 & 1/2	TL1431	TL1405	TL1586

RSSP 5/32 Round Swage Spacers

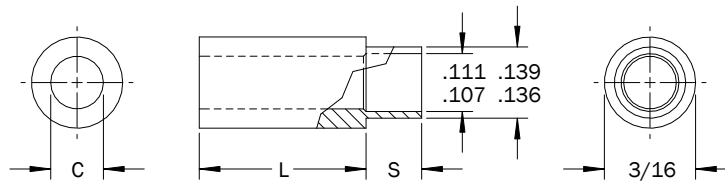
## 3/16 Round Swage Spacers - .139 Shank Diameter

### PART DESCRIPTION EXAMPLE

RSSP3/16 — 2 X .500 — C — .139 — STL — Z

T
T
T
T
T

Clearance Hole Code    Length Code    Shank Length Code    Material Code    Finish Code



### CLEARANCE HOLE

C +.010 -.000	Clearance Hole Code
.088	2

### LENGTH

Length	L (Length Code) ±.005
3/32	.094
1/8	.125
5/32	.156
3/16	.187
7/32	.219
1/4	.250
9/32	.281
5/16	.312
11/32	.344
3/8	.375
13/32	.406
7/16	.437
15/32	.469
1/2	.500

### SHANK

Panel Thickness	S ±.003	Shank Length Code
1/32	.075	A
1/16	.105	B
3/32	.135	C
1/8	.165	D
3/16	.230	E
1/4	.290	F

### INSTALLATION TOOLING

Length	Anvil Part Number	Swage Punch Part Number	Flare Punch Part Number
3/32-3/16	TL1432	TL1406	TL1586
7/32-7/16	TL1433	TL1406	TL1586
15/32 -11/16	TL1434	TL1406	TL1586
23/32-1	TL1435	TL1406	TL1586

All dimensions in inches.  
Custom sizes, materials, and finishes available.

RSSP 3/16 Round Swage Spacers - .139 Shank Diameter

## 3/16 Round Swage Spacers - .139 Shank Diameter

### MATERIAL

Material Code	Material Description
STL	Carbon Steel
SS	Stainless Steel
AL	Aluminum
BRS	Brass

### FINISH

Finish Code	Finish Description
Z	Zinc with Clear Chromate
Z-BLK	Zinc with Black Chromate
Z-YEL	Zinc with Yellow Chromate
NI	Electroplated Bright Nickel
BLK-OX	Black Oxide
CF	Clear Chemical Film
CF-GOLD	Gold Chemical Film
P	Passivated
PLN	Plain
TIN	Electroplated Bright Tin
TIN-MATTE	Electroplated Matte Tin

RSSP 3/16 Round Swage Spacers - .139 Shank Diameter

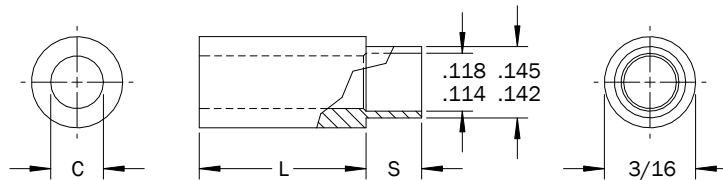
## 3/16 Round Swage Spacers - .145 Shank Diameter

### PART DESCRIPTION EXAMPLE

RSSP3/16 — 2 X .500 — C — .145 — STL — Z

T
T
T
T
T

Clearance Hole Code    Length Code    Shank Length Code    Material Code    Finish Code



### CLEARANCE HOLE

C +.010 -.000	Clearance Hole Code
.088	2
.114	4

### SHANK

Panel Thickness	S ±.003	Shank Length Code
1/32	.075	A
1/16	.105	B
3/32	.135	C
1/8	.165	D
3/16	.230	E
1/4	.290	F

### LENGTH

Length	L (Length Code) ±.005
3/32	.094
1/8	.125
5/32	.156
3/16	.187
7/32	.219
1/4	.250
9/32	.281
5/16	.312
11/32	.344
3/8	.375
13/32	.406
7/16	.437
15/32	.469

Length	L (Length Code) ±.005
1/2	.500
17/32	.531
9/16	.562
19/32	.594
5/8	.625
21/32	.656
11/16	.687
23/32	.719
3/4	.750
25/32	.781
13/16	.812
27/32	.844
7/8	.875
29/32	.906
15/16	.937
31/32	.969
1	1.000

### INSTALLATION TOOLING

Length	Anvil Part Number	Swage Punch Part Number	Flare Punch Part Number
3/32-3/16	TL1432	TL1407	TL1586
7/32-7/16	TL1433	TL1407	TL1586
15/32 -11/16	TL1434	TL1407	TL1586
23/32-1	TL1435	TL1407	TL1586

All dimensions in inches.  
Custom sizes, materials, and finishes available.

RSSP 3/16 Round Swage Spacers - .145 Shank Diameter

## 3/16 Round Swage Spacers - .145 Shank Diameter

### MATERIAL

Material Code	Material Description
STL	Carbon Steel
SS	Stainless Steel
AL	Aluminum
BRS	Brass

### FINISH

Finish Code	Finish Description
Z	Zinc with Clear Chromate
Z-BLK	Zinc with Black Chromate
Z-YEL	Zinc with Yellow Chromate
NI	Electroplated Bright Nickel
BLK-OX	Black Oxide
CF	Clear Chemical Film
CF-GOLD	Gold Chemical Film
P	Passivated
PLN	Plain
TIN	Electroplated Bright Tin
TIN-MATTE	Electroplated Matte Tin

RSSP 3/16 Round Swage Spacers - .145 Shank Diameter

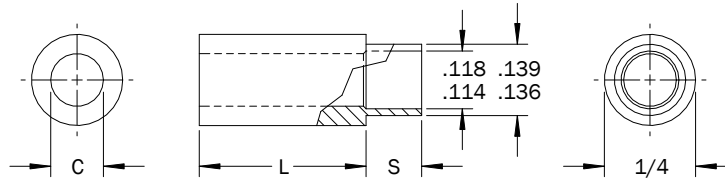
## 1/4 Round Swage Spacers - .139 Shank Diameter

### PART DESCRIPTION EXAMPLE

RSSP1/4 — 4 X .500 — C — .139 — STL — Z

T
T
T
T
T

Clearance Hole Code    Length Code    Shank Length Code    Material Code    Finish Code



### CLEARANCE HOLE

C +.010 -.000	Clearance Hole Code
.088	2
.114	4

### SHANK

Panel Thickness	S ±.003	Shank Length Code
1/32	.075	A
1/16	.105	B
3/32	.135	C
1/8	.165	D
3/16	.230	E
1/4	.290	F

### LENGTH

Length	L (Length Code) ±.005
3/32	.094
1/8	.125
5/32	.156
3/16	.187
7/32	.219
1/4	.250
9/32	.281
5/16	.312
11/32	.344
3/8	.375
13/32	.406
7/16	.437
15/32	.469

Length	L (Length Code) ±.005
1/2	.500
17/32	.531
9/16	.562
19/32	.594
5/8	.625
21/32	.656
11/16	.687
23/32	.719
3/4	.750
25/32	.781
13/16	.812
27/32	.844
7/8	.875
29/32	.906
15/16	.937
31/32	.969
1	1.000

### INSTALLATION TOOLING

Length	Anvil Part Number	Swage Punch Part Number	Flare Punch Part Number
3/32-3/16	TL1436	TL1408	TL1586
7/32-7/16	TL1437	TL1408	TL1586
15/32-11/16	TL1438	TL1408	TL1586
23/32-1	TL1439	TL1408	TL1586

All dimensions in inches.  
Custom sizes, materials, and finishes available.

RSSP 1/4 Round Swage Spacers - .139 Shank Diameter

## 1/4 Round Swage Spacers - .139 Shank Diameter

### MATERIAL

Material Code	Material Description
STL	Carbon Steel
SS	Stainless Steel
AL	Aluminum
BRS	Brass

### FINISH

Finish Code	Finish Description
Z	Zinc with Clear Chromate
Z-BLK	Zinc with Black Chromate
Z-YEL	Zinc with Yellow Chromate
NI	Electroplated Bright Nickel
BLK-OX	Black Oxide
CF	Clear Chemical Film
CF-GOLD	Gold Chemical Film
P	Passivated
PLN	Plain
TIN	Electroplated Bright Tin
TIN-MATTE	Electroplated Matte Tin

RSSP 1/4 Round Swage Spacers - .139 Shank Diameter

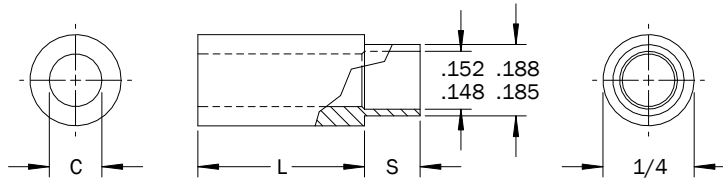
## 1/4 Round Swage Spacers - .188 Shank Diameter

### PART DESCRIPTION EXAMPLE

RSSP1/4 — 4 X .500 — C — .188 — STL — Z

T
T
T
T
T

Clearance Hole Code    Length Code    Shank Length Code    Material Code    Finish Code



### CLEARANCE HOLE

C +.010 -.000	Clearance Hole Code
.088	2
.101	3
.114	4
.140	6

### SHANK

Panel Thickness	S ±.003	Shank Length Code
1/32	.075	A
1/16	.105	B
3/32	.135	C
1/8	.165	D
3/16	.230	E
1/4	.290	F

### LENGTH

Length	L (Length Code) ±.005
3/32	.094
1/8	.125
5/32	.156
3/16	.187
7/32	.219
1/4	.250
9/32	.281
5/16	.312
11/32	.344
3/8	.375
13/32	.406
7/16	.437

Length	L (Length Code) ±.005
15/32	.469
1/2	.500
17/32	.531
9/16	.562
19/32	.594
5/8	.625
21/32	.656
11/16	.687
23/32	.719
3/4	.750
25/32	.781
13/16	.812
27/32	.844
7/8	.875
29/32	.906
15/16	.937
31/32	.969
1	1.000

### INSTALLATION TOOLING

Length	Anvil Part Number	Swage Punch Part Number	Flare Punch Part Number
3/32-3/16	TL1436	TL1197	TL1586
7/32-7/16	TL1437	TL1197	TL1586
15/32-11/16	TL1438	TL1197	TL1586
23/32-1	TL1439	TL1197	TL1586

All dimensions in inches.  
Custom sizes, materials, and finishes available.

RSSP 1/4 Round Swage Spacers - .188 Shank Diameter



# 1/4 Round Swage Spacers - .188 Shank Diameter

## MATERIAL

Material Code	Material Description
STL	Carbon Steel
SS	Stainless Steel
AL	Aluminum
BRS	Brass

## FINISH

Finish Code	Finish Description
Z	Zinc with Clear Chromate
Z-BLK	Zinc with Black Chromate
Z-YEL	Zinc with Yellow Chromate
NI	Electroplated Bright Nickel
BLK-OX	Black Oxide
CF	Clear Chemical Film
CF-GOLD	Gold Chemical Film
P	Passivated
PLN	Plain
TIN	Electroplated Bright Tin
TIN-MATTE	Electroplated Matte Tin

RSSP 1/4 Round Swage Spacers - .188 Shank Diameter

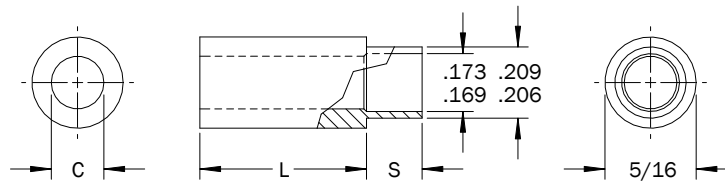
## 5/16 Round Swage Spacers - .209 Shank Diameter

### PART DESCRIPTION EXAMPLE

RSSP5/16 — 6 X .500 — C — .209 — STL — Z

T
T
T
T
T

Clearance Hole Code    Length Code    Shank Length Code    Material Code    Finish Code



### CLEARANCE HOLE

C +.010 -.000	Clearance Hole Code
.114	4
.140	6
.166	8

### SHANK

Panel Thickness	S ±.003	Shank Length Code
1/32	.075	A
1/16	.105	B
3/32	.135	C
1/8	.165	D
3/16	.230	E
1/4	.290	F

### LENGTH

Length	L (Length Code) ±.005
3/32	.094
1/8	.125
5/32	.156
3/16	.187
7/32	.219
1/4	.250
9/32	.281
5/16	.312
11/32	.344
3/8	.375
13/32	.406

Length	L (Length Code) ±.005
7/16	.437
15/32	.469
1/2	.500
17/32	.531
9/16	.562
19/32	.594
5/8	.625
21/32	.656
11/16	.687
23/32	.719
3/4	.750
25/32	.781
13/16	.812
27/32	.844
7/8	.875
29/32	.906
15/16	.937
31/32	.969
1	1.000

### INSTALLATION TOOLING

Length	Anvil Part Number	Swage Punch Part Number	Flare Punch Part Number
3/32-3/16	TL1440	TL1409	TL1586
7/32-7/16	TL1441	TL1409	TL1586
15/32 -11/16	TL1442	TL1409	TL1586
23/32-1	TL1443	TL1409	TL1586

All dimensions in inches.  
Custom sizes, materials, and finishes available.

RSSP 5/16 Round Swage Spacers - .209 Shank Diameter

# 5/16 Round Swage Spacers - .209 Shank Diameter

## MATERIAL

Material Code	Material Description
STL	Carbon Steel
SS	Stainless Steel
AL	Aluminum
BRS	Brass

## FINISH

Finish Code	Finish Description
Z	Zinc with Clear Chromate
Z-BLK	Zinc with Black Chromate
Z-YEL	Zinc with Yellow Chromate
NI	Electroplated Bright Nickel
BLK-OX	Black Oxide
CF	Clear Chemical Film
CF-GOLD	Gold Chemical Film
P	Passivated
PLN	Plain
TIN	Electroplated Bright Tin
TIN-MATTE	Electroplated Matte Tin

RSSP 5/16 Round Swage Spacers - .209 Shank Diameter

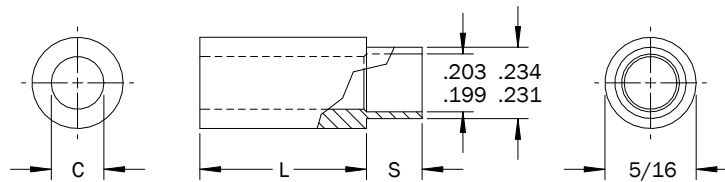
## 5/16 Round Swage Spacers - .234 Shank Diameter

### PART DESCRIPTION EXAMPLE

RSSP5/16 — 8 X .500 — C — .234 — STL — Z

T
T
T
T
T

Clearance Hole Code    Length Code    Shank Length Code    Material Code    Finish Code



### CLEARANCE HOLE

C +.010 -.000	Clearance Hole Code
.140	6
.166	8
.192	10

### SHANK

Panel Thickness	S ±.003	Shank Length Code
1/32	.075	A
1/16	.105	B
3/32	.135	C
1/8	.165	D
3/16	.230	E
1/4	.290	F

### LENGTH

Length	L (Length Code) ±.005
3/32	.094
1/8	.125
5/32	.156
3/16	.187
7/32	.219
1/4	.250
9/32	.281
5/16	.312
11/32	.344
3/8	.375

Length	L (Length Code) ±.005
13/32	.406
7/16	.437
15/32	.469
1/2	.500
17/32	.531
9/16	.562
19/32	.594
5/8	.625
21/32	.656
11/16	.687
23/32	.719
3/4	.750
25/32	.781
13/16	.812
27/32	.844
7/8	.875
29/32	.906
15/16	.937
31/32	.969
1	1.000

### INSTALLATION TOOLING

Length	Anvil Part Number	Swage Punch Part Number	Flare Punch Part Number
3/32-3/16	TL1440	TL1285	TL1586
7/32-7/16	TL1441	TL1285	TL1586
15/32-11/16	TL1442	TL1285	TL1586
23/32-1	TL1443	TL1285	TL1586

All dimensions in inches.  
Custom sizes, materials, and finishes available.

RSSP 5/16 Round Swage Spacers - .234 Shank Diameter

## 5/16 Round Swage Spacers - .234 Shank Diameter

### MATERIAL

Material Code	Material Description
STL	Carbon Steel
SS	Stainless Steel
AL	Aluminum
BRS	Brass

### FINISH

Finish Code	Finish Description
Z	Zinc with Clear Chromate
Z-BLK	Zinc with Black Chromate
Z-YEL	Zinc with Yellow Chromate
NI	Electroplated Bright Nickel
BLK-OX	Black Oxide
CF	Clear Chemical Film
CF-GOLD	Gold Chemical Film
P	Passivated
PLN	Plain
TIN	Electroplated Bright Tin
TIN-MATTE	Electroplated Matte Tin

RSSP 5/16 Round Swage Spacers - .234 Shank Diameter

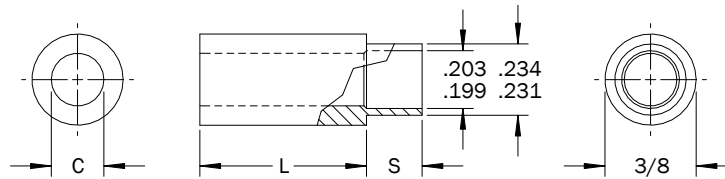
## 3/8 Round Swage Spacers

### PART DESCRIPTION EXAMPLE

RSSP3/8 — 8 X .500 — C — .234 — STL — Z

T
T
T
T
T

Clearance Hole Code    Length Code    Shank Length Code    Material Code    Finish Code



### CLEARANCE HOLE

C +.010 -.000	Clearance Hole Code
.140	6
.166	8
.192	10

### SHANK

Panel Thickness	S ±.003	Shank Length Code
1/32	.075	A
1/16	.105	B
3/32	.135	C
1/8	.165	D
3/16	.230	E
1/4	.290	F

### LENGTH

Length	L (Length Code) ±.005
3/32	.094
1/8	.125
5/32	.156
3/16	.187
7/32	.219
1/4	.250
9/32	.281
5/16	.312
11/32	.344
3/8	.375
13/32	.406

Length	L (Length Code) ±.005
7/16	.437
15/32	.469
1/2	.500
17/32	.531
9/16	.562
19/32	.594
5/8	.625
21/32	.656
11/16	.687
23/32	.719
3/4	.750
25/32	.781
13/16	.812
27/32	.844
7/8	.875
29/32	.906
15/16	.937
31/32	.969
1	1.000

### INSTALLATION TOOLING

Length	Anvil Part Number	Swage Punch Part Number	Flare Punch Part Number
3/32-3/16	TL1444	TL1285	TL1586
7/32-7/16	TL1445	TL1285	TL1586
15/32-11/16	TL1446	TL1285	TL1586
23/32-1	TL1447	TL1285	TL1586

All dimensions in inches.  
Custom sizes, materials, and finishes available.

RSSP 3/8 Round Swage Spacers

## 3/8 Round Swage Spacers

### MATERIAL

Material Code	Material Description
STL	Carbon Steel
SS	Stainless Steel
AL	Aluminum
BRS	Brass

### FINISH

Finish Code	Finish Description
Z	Zinc with Clear Chromate
Z-BLK	Zinc with Black Chromate
Z-YEL	Zinc with Yellow Chromate
NI	Electroplated Bright Nickel
BLK-OX	Black Oxide
CF	Clear Chemical Film
CF-GOLD	Gold Chemical Film
P	Passivated
PLN	Plain
TIN	Electroplated Bright Tin
TIN-MATTE	Electroplated Matte Tin

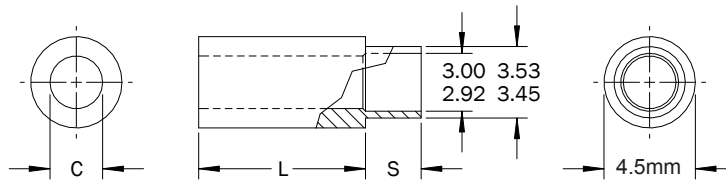
## 4.5mm Round Swage Spacers

### PART DESCRIPTION EXAMPLE

RSSP4.5 — 2.2 X 15.00 — C — 3.53 — STL — Z

T
T
T
T
T

Clearance Hole Code    Length Code    Shank Length Code    Material Code    Finish Code



### CLEARANCE HOLE

Thread	C (Clearance Hole Code) +0.3 -0.0
M2	2.2
M2.5	2.7

### INSTALLATION TOOLING

Length	Anvil Part Number	Swage Punch Part Number	Flare Punch Part Number
3-5	TL1448	TL1408	TL1586
6-12	TL1449	TL1408	TL1586
13-18	TL1450	TL1408	TL1586
19-25	TL1451	TL1408	TL1586

### SHANK

Panel Thickness	S ±0.08	Shank Length Code
0.8	1.9	A
1.6	2.7	B
2.4	3.4	C
3.2	4.2	D
4.8	5.8	E
6.4	7.4	F

### LENGTH

Length	L (Length Code) ±0.13
3	3.00
4	4.00
5	5.00
6	6.00
7	7.00
8	8.00
9	9.00
10	10.00
11	11.00
12	12.00
13	13.00
14	14.00

Length	L (Length Code) ±0.13
15	15.00
16	16.00
17	17.00
18	18.00
19	19.00
20	20.00
21	21.00
22	22.00
23	23.00
24	24.00
25	25.00

All dimensions in millimeters.  
Custom sizes, materials, and finishes available.

RSSP 4.5mm Round Swage Spacers



## 4.5mm Round Swage Spacers

### MATERIAL

Material Code	Material Description
STL	Carbon Steel
SS	Stainless Steel
AL	Aluminum
BRS	Brass

### FINISH

Finish Code	Finish Description
Z	Zinc with Clear Chromate
Z-BLK	Zinc with Black Chromate
Z-YEL	Zinc with Yellow Chromate
NI	Electroplated Bright Nickel
BLK-OX	Black Oxide
CF	Clear Chemical Film
CF-GOLD	Gold Chemical Film
P	Passivated
PLN	Plain
TIN	Electroplated Bright Tin
TIN-MATTE	Electroplated Matte Tin

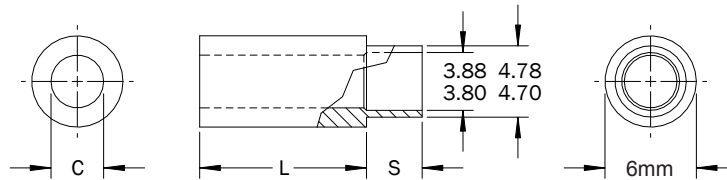
## 6mm Round Swage Spacers

### PART DESCRIPTION EXAMPLE

HSSP6 — 2.7 X 15.00 — C — 4.78 — STL — Z

T
T
T
T
T

Clearance Hole Code    Length Code    Shank Length Code    Material Code    Finish Code



### CLEARANCE HOLE

Thread	C (Clearance Hole Code) +0.3 -0.0
M2	2.2
M2.5	2.7
M3	3.2
M3.5	3.7

### INSTALLATION TOOLING

Length	Anvil Part Number	Swage Punch Part Number	Flare Punch Part Number
3-5	TL1452	TL1197	TL1586
6-12	TL1453	TL1197	TL1586
13-18	TL1454	TL1197	TL1586
19-25	TL1455	TL1197	TL1586

### SHANK

Panel Thickness	S ±0.08	Shank Length Code
0.8	1.9	A
1.6	2.7	B
2.4	3.4	C
3.2	4.2	D
4.8	5.8	E
6.4	7.4	F

### LENGTH

Length	L (Length Code) ±0.13
3	3.00
4	4.00
5	5.00
6	6.00
7	7.00
8	8.00
9	9.00
10	10.00
11	11.00
12	12.00
13	13.00
14	14.00

Length	L (Length Code) ±0.13
15	15.00
16	16.00
17	17.00
18	18.00
19	19.00
20	20.00
21	21.00
22	22.00
23	23.00
24	24.00
25	25.00

All dimensions in millimeters.  
Custom sizes, materials, and finishes available.

RSSP 6mm Round Swage Spacers

## 6mm Round Swage Spacers

### MATERIAL

Material Code	Material Description
STL	Carbon Steel
SS	Stainless Steel
AL	Aluminum
BRS	Brass

### FINISH

Finish Code	Finish Description
Z	Zinc with Clear Chromate
Z-BLK	Zinc with Black Chromate
Z-YEL	Zinc with Yellow Chromate
NI	Electroplated Bright Nickel
BLK-OX	Black Oxide
CF	Clear Chemical Film
CF-GOLD	Gold Chemical Film
P	Passivated
PLN	Plain
TIN	Electroplated Bright Tin
TIN-MATTE	Electroplated Matte Tin

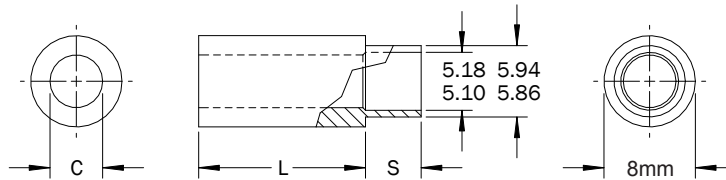
## 8mm Round Swage Spacers

### PART DESCRIPTION EXAMPLE

RSSP8 — 2.7 X 15.00 — C — 5.94 — STL — Z

T
T
T
T
T

Clearance Hole Code    Length Code    Shank Length Code    Material Code    Finish Code



### CLEARANCE HOLE

Thread	C (Clearance Hole Code) +0.3 -0.0
M2	2.2
M2.5	2.7
M3	3.2
M3.5	3.7

### INSTALLATION TOOLING

Length	Anvil Part Number	Swage Punch Part Number	Flare Punch Part Number
3-5	TL1456	TL1285	TL1586
6-12	TL1457	TL1285	TL1586
13-18	TL1458	TL1285	TL1586
19-25	TL1459	TL1285	TL1586

### SHANK

Panel Thickness	S ±0.08	Shank Length Code
0.8	1.9	A
1.6	2.7	B
2.4	3.4	C
3.2	4.2	D
4.8	5.8	E
6.4	7.4	F

### LENGTH

Length	L (Length Code) ±0.13
3	3.00
4	4.00
5	5.00
6	6.00
7	7.00
8	8.00
9	9.00
10	10.00
11	11.00
12	12.00
13	13.00
14	14.00

Length	L (Length Code) ±0.13
15	15.00
16	16.00
17	17.00
18	18.00
19	19.00
20	20.00
21	21.00
22	22.00
23	23.00
24	24.00
25	25.00

All dimensions in millimeters.  
Custom sizes, materials, and finishes available.

RSSP 8mm Round Swage Spacers

## 8mm Round Swage Spacers

### MATERIAL

Material Code	Material Description
STL	Carbon Steel
SS	Stainless Steel
AL	Aluminum
BRS	Brass

### FINISH

Finish Code	Finish Description
Z	Zinc with Clear Chromate
Z-BLK	Zinc with Black Chromate
Z-YEL	Zinc with Yellow Chromate
NI	Electroplated Bright Nickel
BLK-OX	Black Oxide
CF	Clear Chemical Film
CF-GOLD	Gold Chemical Film
P	Passivated
PLN	Plain
TIN	Electroplated Bright Tin
TIN-MATTE	Electroplated Matte Tin