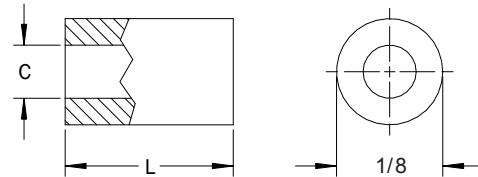


## 1/8 Round Spacers

### PART DESCRIPTION EXAMPLE

RSP1/8 — 2 X .250 — STL — Z

2    .250    STL    Z  
T            T            T            T  
Clearance Length    Material    Finish  
Hole        Code        Code        Code  
Code



### CLEARANCE HOLE

C +.010 -.000	Clearance Hole Code
.062	0
.088	2

### MATERIAL

Material Code	Material Description
STL	Carbon Steel
SS	Stainless Steel
AL	Aluminum
BRS	Brass
NYVO	Nylon UL-94 V0
NYV2	Nylon UL-94-V2

### LENGTH

Length	L (Length) Code ±.005
3/32	.094
1/8	.125
5/32	.156
3/16	.187
7/32	.219
1/4	.250
9/32	.281
5/16	.312
11/32	.344
3/8	.375
13/32	.406
7/16	.437
15/32	.469
1/2	.500

### FINISH

Finish Code	Finish Description
Z	Zinc with Clear Chromate
Z-BLK	Zinc with Black Chromate
Z-YEL	Zinc with Yellow Chromate
NI	Electroplated Bright Nickel
BLK-OX	Black Oxide
CF	Clear Chemical Film
CF-GOLD	Gold Chemical Film
P	Passivated
PLN	Plain
TIN	Electroplated Bright Tin
TIN-MATTE	Electroplated Matte Tin

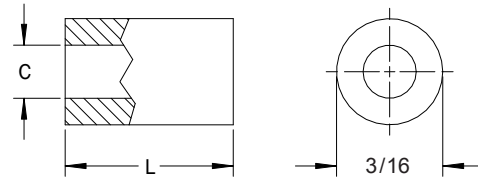
All dimensions in inches.  
Custom sizes, materials, and finishes available.

## 3/16 Round Spacers

### PART DESCRIPTION EXAMPLE

RSP3/16 — 2 X .500 — STL — Z

Clearance Hole Code  
 Length Code  
 Material Code  
 Finish Code



### CLEARANCE HOLE

C +.010 -.000	Clearance Hole Code
.088	2
.114	4

### MATERIAL

Material Code	Material Description
STL	Carbon Steel
SS	Stainless Steel
AL	Aluminum
BRS	Brass
NYVO	Nylon UL-94 V0
NYV2	Nylon UL-94-V2

### LENGTH

Length	L (Length Code) ±.005
3/32	.094
1/8	.125
5/32	.156
3/16	.187
7/32	.219
1/4	.250
9/32	.281
5/16	.312
11/32	.344
3/8	.375
13/32	.406
7/16	.437
15/32	.469
1/2	.500
17/32	.531

Length	L (Length Code) ±.005
9/16	.562
19/32	.594
5/8	.625
21/32	.656
11/16	.687
23/32	.719
3/4	.750
25/32	.781
13/16	.812
27/32	.844
7/8	.875
29/32	.906
15/16	.937
31/32	.969
1	1.000

### FINISH

Finish Code	Finish Description
Z	Zinc with Clear Chromate
Z-BLK	Zinc with Black Chromate
Z-YEL	Zinc with Yellow Chromate
NI	Electroplated Bright Nickel
BLK-OX	Black Oxide
CF	Clear Chemical Film
CF-GOLD	Gold Chemical Film
P	Passivated
PLN	Plain
TIN	Electroplated Bright Tin
TIN-MATTE	Electroplated Matte Tin

RSP 3/16 Round Spacers

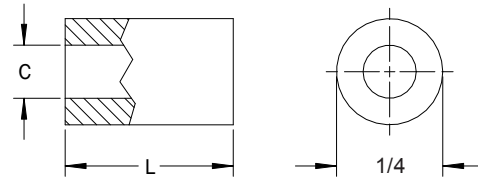
All dimensions in inches.  
Custom sizes, materials, and finishes available.

## 1/4 Round Spacers

### PART DESCRIPTION EXAMPLE

RSP1/4 — 4 X 1.000 — STL — Z

Clearance Hole Code  
 Length Code  
 Material Code  
 Finish Code



### CLEARANCE HOLE

C +.010 -.000	Clearance Hole Code
.088	2
.114	4
.140	6
.166	8

Length	L (Length Code) ±.005
17/32	.531
9/16	.562
19/32	.594
5/8	.625
21/32	.656
11/16	.687
23/32	.719
3/4	.750
25/32	.781
13/16	.812
27/32	.844
7/8	.875
29/32	.906
15/16	.937
31/32	.969
1	1.000
1-1/16	1.062
1-1/8	1.125
1-3/16	1.187
1-1/4	1.250
1-5/16	1.312
1-3/8	1.375
1-7/16	1.437
1-1/2	1.500

Length	L (Length Code) ±.005
1-9/16	1.562
1-5/8	1.625
1-11/16	1.687
1-3/4	1.750
1-13/16	1.812
1-7/8	1.875
1-15/16	1.937
2	2.000

### MATERIAL

Material Code	Material Description
STL	Carbon Steel
SS	Stainless Steel
AL	Aluminum
BRS	Brass
NYVO	Nylon UL-94 V0
NYV2	Nylon UL-94-V2

### LENGTH

Length	L (Length Code) ±.005
3/32	.094
1/8	.125
5/32	.156
3/16	.187
7/32	.219
1/4	.250
9/32	.281
5/16	.312
11/32	.344
3/8	.375
13/32	.406
7/16	.437
15/32	.469
1/2	.500

### FINISH

Finish Code	Finish Description
Z	Zinc with Clear Chromate
Z-BLK	Zinc with Black Chromate
Z-YEL	Zinc with Yellow Chromate
NI	Electroplated Bright Nickel
BLK-OX	Black Oxide
CF	Clear Chemical Film
CF-GOLD	Gold Chemical Film
P	Passivated
PLN	Plain
TIN	Electroplated Bright Tin
TIN-MATTE	Electroplated Matte Tin

## RSP 1/4 Round Spacers

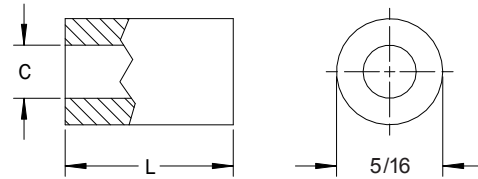
All dimensions in inches.  
Custom sizes, materials, and finishes available.

## 5/16 Round Spacers

### PART DESCRIPTION EXAMPLE

RSP5/16 — 6 X 1.000 — STL — Z

T      T      T      T  
 Clearance Hole Code    Length Code    Material Code    Finish Code



### CLEARANCE HOLE

C +.010 -.000	Clearance Hole Code
.114	4
.140	6
.166	8
.192	10

Length	L (Length Code) ±.005
17/32	.531
9/16	.562
19/32	.594
5/8	.625
21/32	.656
11/16	.687
23/32	.719
3/4	.750
25/32	.781
13/16	.812
27/32	.844
7/8	.875
29/32	.906
15/16	.937
31/32	.969
1	1.000
1-1/16	1.062
1-1/8	1.125
1-3/16	1.187
1-1/4	1.250
1-5/16	1.312
1-3/8	1.375
1-7/16	1.437
1-1/2	1.500

Length	L (Length Code) ±.005
1-9/16	1.562
1-5/8	1.625
1-11/16	1.687
1-3/4	1.750
1-13/16	1.812
1-7/8	1.875
1-15/16	1.937
2	2.000

### MATERIAL

Material Code	Material Description
STL	Carbon Steel
SS	Stainless Steel
AL	Aluminum
BRS	Brass
NYVO	Nylon UL-94 V0
NYV2	Nylon UL-94-V2

### LENGTH

Length	L (Length Code) ±.005
3/32	.094
1/8	.125
5/32	.156
3/16	.187
7/32	.219
1/4	.250
9/32	.281
5/16	.312
11/32	.344
3/8	.375
13/32	.406
7/16	.437
15/32	.469
1/2	.500

### FINISH

Finish Code	Finish Description
Z	Zinc with Clear Chromate
Z-BLK	Zinc with Black Chromate
Z-YEL	Zinc with Yellow Chromate
NI	Electroplated Bright Nickel
BLK-OX	Black Oxide
CF	Clear Chemical Film
CF-GOLD	Gold Chemical Film
P	Passivated
PLN	Plain
TIN	Electroplated Bright Tin
TIN-MATTE	Electroplated Matte Tin

## RSP 5/16 Round Spacers

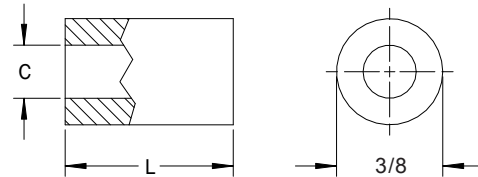
All dimensions in inches.  
Custom sizes, materials, and finishes available.

## 3/8 Round Spacers

### PART DESCRIPTION EXAMPLE

RSP3/8 — 8 X 1.000 — STL — Z

Clearance Hole Code  
 Length Code  
 Material Code  
 Finish Code



### CLEARANCE HOLE

C +.010 -.000	Clearance Hole Code
.140	6
.166	8
.192	10
.218	12

Length	L (Length Code) ±.005
17/32	.531
9/16	.562
19/32	.594
5/8	.625
21/32	.656
11/16	.687
23/32	.719
3/4	.750
25/32	.781
13/16	.812
27/32	.844
7/8	.875
29/32	.906
15/16	.937
31/32	.969
1	1.000
1-1/16	1.062
1-1/8	1.125
1-3/16	1.187
1-1/4	1.250
1-5/16	1.312
1-3/8	1.375
1-7/16	1.437
1-1/2	1.500

Length	L (Length Code) ±.005
1-9/16	1.562
1-5/8	1.625
1-11/16	1.687
1-3/4	1.750
1-13/16	1.812
1-7/8	1.875
1-15/16	1.937
2	2.000

### MATERIAL

Material Code	Material Description
STL	Carbon Steel
SS	Stainless Steel
AL	Aluminum
BRS	Brass
NYVO	Nylon UL-94 V0
NYV2	Nylon UL-94-V2

### LENGTH

Length	L (Length Code) ±.005
3/32	.094
1/8	.125
5/32	.156
3/16	.187
7/32	.219
1/4	.250
9/32	.281
5/16	.312
11/32	.344
3/8	.375
13/32	.406
7/16	.437
15/32	.469
1/2	.500

### FINISH

Finish Code	Finish Description
Z	Zinc with Clear Chromate
Z-BLK	Zinc with Black Chromate
Z-YEL	Zinc with Yellow Chromate
NI	Electroplated Bright Nickel
BLK-OX	Black Oxide
CF	Clear Chemical Film
CF-GOLD	Gold Chemical Film
P	Passivated
PLN	Plain
TIN	Electroplated Bright Tin
TIN-MATTE	Electroplated Matte Tin

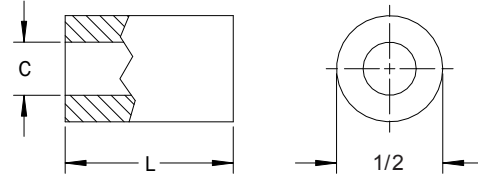
All dimensions in inches.  
Custom sizes, materials, and finishes available.

## 1/2 Round Spacers

### PART DESCRIPTION EXAMPLE

RSP1/2 — 10 X 1.000 — STL — Z

Clearance Hole Code  
 Length Code  
 Material Code  
 Finish Code



### CLEARANCE HOLE

C +.010 -.000	Clearance Hole Code
.140	6
.166	8
.192	10
.218	12
.252	25

Length	L (Length Code) ±.005
1/2	.500
17/32	.531
9/16	.562
19/32	.594
5/8	.625
21/32	.656
11/16	.687
23/32	.719
3/4	.750
25/32	.781
13/16	.812
27/32	.844
7/8	.875
29/32	.906
15/16	.937
31/32	.969
1	1.000
1-1/16	1.062
1-1/8	1.125
1-3/16	1.187
1-1/4	1.250
1-5/16	1.312
1-3/8	1.375
1-7/16	1.437

Length	L (Length Code) ±.005
1-1/2	1.500
1-9/16	1.562
1-5/8	1-5/8
1-11/16	1-11/16
1-3/4	1-3/4
1-13/16	1-13/16
1-7/8	1-7/8
1-15/16	1-15/16
2	2.000

### MATERIAL

Material Code	Material Description
STL	Carbon Steel
SS	Stainless Steel
AL	Aluminum
BRS	Brass
NYVO	Nylon UL-94 V0
NYV2	Nylon UL-94-V2

### LENGTH

Length	L (Length Code) ±.005
3/32	.094
1/8	.125
5/32	.156
3/16	.187
7/32	.219
1/4	.250
9/32	.281
5/16	.312
11/32	.344
3/8	.375
13/32	.406
7/16	.437
15/32	.469

### FINISH

Finish Code	Finish Description
Z	Zinc with Clear Chromate
Z-BLK	Zinc with Black Chromate
Z-YEL	Zinc with Yellow Chromate
NI	Electroplated Bright Nickel
BLK-OX	Black Oxide
CF	Clear Chemical Film
CF-GOLD	Gold Chemical Film
P	Passivated
PLN	Plain
TIN	Electroplated Bright Tin
TIN-MATTE	Electroplated Matte Tin

RSP 1/2 Round Spacers

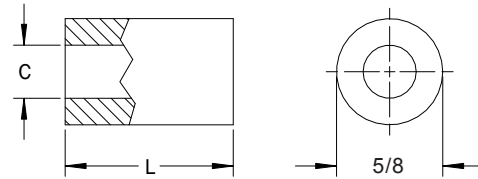
All dimensions in inches.  
Custom sizes, materials, and finishes available.

## 5/8 Round Spacers

### PART DESCRIPTION EXAMPLE

RSP5/8 — 12 X 1.000 — STL — Z

Clearance Hole Code  
 Length Code  
 Material Code  
 Finish Code



### CLEARANCE HOLE

C +.010 -.000	Clearance Hole Code
.140	6
.166	8
.192	10
.218	12
.252	25
.315	31
.377	38

Length	L (Length Code) ±.005
1/2	.500
17/32	.531
9/16	.562
19/32	.594
5/8	.625
21/32	.656
11/16	.687
23/32	.719
3/4	.750
25/32	.781
13/16	.812
27/32	.844
7/8	.875
29/32	.906
15/16	.937
31/32	.969
1	1.000
1-1/16	1.062
1-1/8	1.125
1-3/16	1.187
1-1/4	1.250
1-5/16	1.312
1-3/8	1.375
1-7/16	1.437

Length	L (Length Code) ±.005
1-1/2	1.500
1-9/16	1.562
1-5/8	1-5/8
1-11/16	1-11/16
1-3/4	1-3/4
1-13/16	1-13/16
1-7/8	1-7/8
1-15/16	1-15/16
2	2.000

### MATERIAL

Material Code	Material Description
STL	Carbon Steel
SS	Stainless Steel
AL	Aluminum
BRS	Brass
NYVO	Nylon UL-94 V0
NYV2	Nylon UL-94-V2

### LENGTH

Length	L (Length Code) ±.005
3/32	.094
1/8	.125
5/32	.156
3/16	.187
7/32	.219
1/4	.250
9/32	.281
5/16	.312
11/32	.344
3/8	.375
13/32	.406

### FINISH

Finish Code	Finish Description
Z	Zinc with Clear Chromate
Z-BLK	Zinc with Black Chromate
Z-YEL	Zinc with Yellow Chromate
NI	Electroplated Bright Nickel
BLK-OX	Black Oxide
CF	Clear Chemical Film
CF-GOLD	Gold Chemical Film
P	Passivated
PLN	Plain
TIN	Electroplated Bright Tin
TIN-MATTE	Electroplated Matte Tin

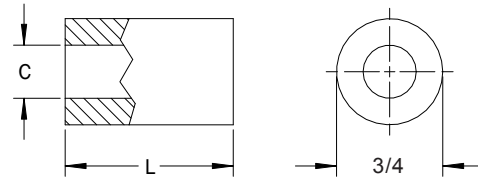
All dimensions in inches.  
Custom sizes, materials, and finishes available.

## 3/4 Round Spacers

### PART DESCRIPTION EXAMPLE

RSP3/4 — 25 X 1.000 — STL — Z

Clearance Hole Code  
 Length Code  
 Material Code  
 Finish Code



### CLEARANCE HOLE

C +.010 -.000	Clearance Hole Code
.140	6
.166	8
.192	10
.218	12
.252	25
.315	31
.377	38
.440	43
.505	50

Length	L (Length Code) ±.005
13/32	.406
7/16	.437
15/32	.469
1/2	.500
17/32	.531
9/16	.562
19/32	.594
5/8	.625
21/32	.656
11/16	.687
23/32	.719
3/4	.750
25/32	.781
13/16	.812
27/32	.844
7/8	.875
29/32	.906
15/16	.937
31/32	.969
1	1.000
1-1/16	1.062
1-1/8	1.125
1-3/16	1.187
1-1/4	1.250
1-5/16	1.312

Length	L (Length Code) ±.005
1-3/8	1.375
1-7/16	1.437
1-1/2	1.500
1-9/16	1.562
1-5/8	1-5/8
1-11/16	1-11/16
1-3/4	1-3/4
1-13/16	1-13/16
1-7/8	1-7/8
1-15/16	1-15/16
2	2.000

### MATERIAL

Material Code	Material Description
STL	Carbon Steel
SS	Stainless Steel
AL	Aluminum
BRS	Brass
NYVO	Nylon UL-94 V0
NYV2	Nylon UL-94-V2

All dimensions in inches.  
Custom sizes, materials, and finishes available.

### LENGTH

Length	L (Length Code) ±.005
3/32	.094
1/8	.125
5/32	.156
3/16	.187
7/32	.219
1/4	.250
9/32	.281
5/16	.312
11/32	.344
3/8	.375

### FINISH

Finish Code	Finish Description
Z	Zinc with Clear Chromate
Z-BLK	Zinc with Black Chromate
Z-YEL	Zinc with Yellow Chromate
NI	Electroplated Bright Nickel
BLK-OX	Black Oxide
CF	Clear Chemical Film
CF-GOLD	Gold Chemical Film
P	Passivated
PLN	Plain
TIN	Electroplated Bright Tin
TIN-MATTE	Electroplated Matte Tin

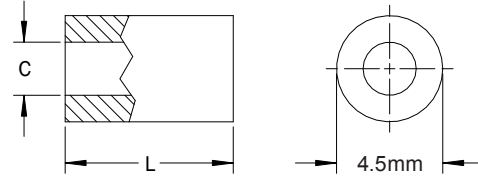


## 4.5mm Round Spacers

### PART DESCRIPTION EXAMPLE

RSP4.5 — 2.7 X 15.00 — STL — Z

Clearance Hole Code  
 Length Code  
 Material Code  
 Finish Code



### CLEARANCE HOLE

Thread	C (Clearance Hole Code) +0.3 -0.0
M2	2.2
M2.5	2.7
M3	3.2

### MATERIAL

Material Code	Material Description
STL	Carbon Steel
SS	Stainless Steel
AL	Aluminum
BRS	Brass
NYVO	Nylon UL-94 V0
NYV2	Nylon UL-94-V2

### LENGTH

Length	L (Length Code) ±0.13
1	1.00
2	2.00
3	3.00
4	4.00
5	5.00
6	6.00
7	7.00
8	8.00
9	9.00
10	10.00
11	11.00
12	12.00
13	13.00

Length	L (Length Code) ±0.13
14	14.00
15	15.00
16	16.00
17	17.00
18	18.00
19	19.00
20	20.00
21	21.00
22	22.00
23	23.00
24	24.00
25	25.00

### FINISH

Finish Code	Finish Description
Z	Zinc with Clear Chromate
Z-BLK	Zinc with Black Chromate
Z-YEL	Zinc with Yellow Chromate
NI	Electroplated Bright Nickel
BLK-OX	Black Oxide
CF	Clear Chemical Film
CF-GOLD	Gold Chemical Film
P	Passivated
PLN	Plain
TIN	Electroplated Bright Tin
TIN-MATTE	Electroplated Matte Tin

RSP 4.5mm Round Spacers

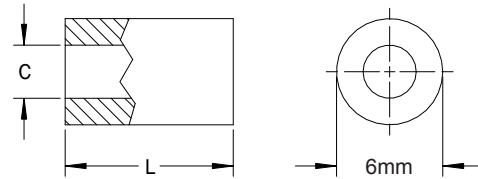
All dimensions in millimeters.  
Custom sizes, materials, and finishes available.

## 6mm Round Spacers

### PART DESCRIPTION EXAMPLE

RSP6 — 3.7 X 25.00 — STL — Z

Clearance Hole Code  
 Length Code  
 Material Code  
 Finish Code



### CLEARANCE HOLE

Thread	C (Clearance Hole Code) +0.3 -0.0
M3	3.2
M3.5	3.7
M4	4.3

Length	L (Length Code) ±0.13
16	16.00
17	17.00
18	18.00
19	19.00
20	20.00
21	21.00
22	22.00
23	23.00
24	24.00
25	25.00
26	26.00
27	27.00
28	28.00
29	29.00
30	30.00
31	31.00
32	32.00
33	33.00
34	34.00
35	35.00
36	36.00
37	37.00
38	38.00
39	39.00

Length	L (Length Code) ±0.13
40	40.00
41	41.00
42	42.00
43	43.00
44	44.00
45	45.00
46	46.00
47	47.00
48	48.00
49	49.00
50	50.00
51	51.00

### MATERIAL

Material Code	Material Description
STL	Carbon Steel
SS	Stainless Steel
AL	Aluminum
BRS	Brass
NYVO	Nylon UL-94 V0
NYV2	Nylon UL-94-V2

### LENGTH

Length	L (Length Code) ±0.13
1	1.00
2	2.00
3	3.00
4	4.00
5	5.00
6	6.00
7	7.00
8	8.00
9	9.00
10	10.00
11	11.00
12	12.00
13	13.00
14	14.00
15	15.00

### FINISH

Finish Code	Finish Description
Z	Zinc with Clear Chromate
Z-BLK	Zinc with Black Chromate
Z-YEL	Zinc with Yellow Chromate
NI	Electroplated Bright Nickel
BLK-OX	Black Oxide
CF	Clear Chemical Film
CF-GOLD	Gold Chemical Film
P	Passivated
PLN	Plain
TIN	Electroplated Bright Tin
TIN-MATTE	Electroplated Matte Tin

RSP 6mm Round Spacers

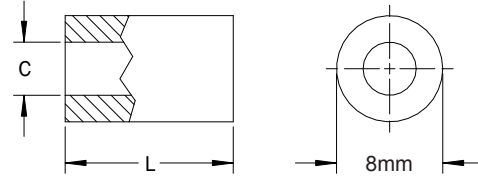
All dimensions in millimeters.  
Custom sizes, materials, and finishes available.

## 8mm Round Spacers

### PART DESCRIPTION EXAMPLE

RSP8 — 3.7 X 25.00 — STL — Z

Clearance Hole Code  
 Length Code  
 Material Code  
 Finish Code



### CLEARANCE HOLE

Thread	C (Clearance Hole Code) +0.3 -0.0
M3	3.2
M3.5	3.7
M4	4.3
M5	5.3

Length	L (Length Code) ±0.13
15	15.00
16	16.00
17	17.00
18	18.00
19	19.00
20	20.00
21	21.00
22	22.00
23	23.00
24	24.00
25	25.00
26	26.00
27	27.00
28	28.00
29	29.00
30	30.00
31	31.00
32	32.00
33	33.00
34	34.00
35	35.00
36	36.00
37	37.00
38	38.00

Length	L (Length Code) ±0.13
39	39.00
40	40.00
41	41.00
42	42.00
43	43.00
44	44.00
45	45.00
46	46.00
47	47.00
48	48.00
49	49.00
50	50.00
51	51.00

### MATERIAL

Material Code	Material Description
STL	Carbon Steel
SS	Stainless Steel
AL	Aluminum
BRS	Brass
NYVO	Nylon UL-94 V0
NYV2	Nylon UL-94-V2

### LENGTH

Length	L (Length Code) ±0.13
1	1.00
2	2.00
3	3.00
4	4.00
5	5.00
6	6.00
7	7.00
8	8.00
9	9.00
10	10.00
11	11.00
12	12.00
13	13.00
14	14.00

### FINISH

Finish Code	Finish Description
Z	Zinc with Clear Chromate
Z-BLK	Zinc with Black Chromate
Z-YEL	Zinc with Yellow Chromate
NI	Electroplated Bright Nickel
BLK-OX	Black Oxide
CF	Clear Chemical Film
CF-GOLD	Gold Chemical Film
P	Passivated
PLN	Plain
TIN	Electroplated Bright Tin
TIN-MATTE	Electroplated Matte Tin

All dimensions in millimeters.  
Custom sizes, materials, and finishes available.

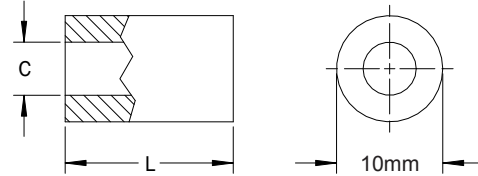
RSP 8mm Round Spacers

## 10mm Round Spacers

### PART DESCRIPTION EXAMPLE

RSP10 — 4.3 X 30.00 — STL — Z

Clearance Hole Code  
 Length Code  
 Material Code  
 Finish Code



### CLEARANCE HOLE

Thread	C (Clearance Hole Code) +0.3 -0.0
M3.5	3.7
M4	4.3
M5	5.3

Length	L (Length Code) ±0.13
16	16.00
17	17.00
18	18.00
19	19.00
20	20.00
21	21.00
22	22.00
23	23.00
24	24.00
25	25.00
26	26.00
27	27.00
28	28.00
29	29.00
30	30.00
31	31.00
32	32.00
33	33.00
34	34.00
35	35.00
36	36.00
37	37.00
38	38.00
39	39.00

Length	L (Length Code) ±0.13
40	40.00
41	41.00
42	42.00
43	43.00
44	44.00
45	45.00
46	46.00
47	47.00
48	48.00
49	49.00
50	50.00
51	51.00

### MATERIAL

Material Code	Material Description
STL	Carbon Steel
SS	Stainless Steel
AL	Aluminum
BRS	Brass
NYVO	Nylon UL-94 V0
NYV2	Nylon UL-94-V2

### LENGTH

Length	L (Length Code) ±0.13
1	1.00
2	2.00
3	3.00
4	4.00
5	5.00
6	6.00
7	7.00
8	8.00
9	9.00
10	10.00
11	11.00
12	12.00
13	13.00
14	14.00
15	15.00

### FINISH

Finish Code	Finish Description
Z	Zinc with Clear Chromate
Z-BLK	Zinc with Black Chromate
Z-YEL	Zinc with Yellow Chromate
NI	Electroplated Bright Nickel
BLK-OX	Black Oxide
CF	Clear Chemical Film
CF-GOLD	Gold Chemical Film
P	Passivated
PLN	Plain
TIN	Electroplated Bright Tin
TIN-MATTE	Electroplated Matte Tin

RSP 10mm Round Spacers

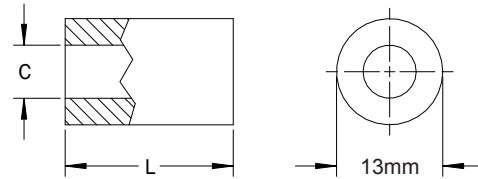
All dimensions in millimeters.  
Custom sizes, materials, and finishes available.

## 13mm Round Spacers

### PART DESCRIPTION EXAMPLE

RSP13 — 5.3 X 35.00 — STL — Z

Clearance Hole Code  
 Length Code  
 Material Code  
 Finish Code



### CLEARANCE HOLE

Thread	C (Clearance Hole Code) +0.3 -0.0
M4	4.3
M5	5.3
M6	6.4
M8	8.4

Length	L (Length Code) ±0.13
15	15.00
16	16.00
17	17.00
18	18.00
19	19.00
20	20.00
21	21.00
22	22.00
23	23.00
24	24.00
25	25.00
26	26.00
27	27.00
28	28.00
29	29.00
30	30.00
31	31.00
32	32.00
33	33.00
34	34.00
35	35.00
36	36.00
37	37.00
38	38.00

Length	L (Length Code) ±0.13
39	39.00
40	40.00
41	41.00
42	42.00
43	43.00
44	44.00
45	45.00
46	46.00
47	47.00
48	48.00
49	49.00
50	50.00
51	51.00

### MATERIAL

Material Code	Material Description
STL	Carbon Steel
SS	Stainless Steel
AL	Aluminum
BRS	Brass
NYVO	Nylon UL-94 V0
NYV2	Nylon UL-94-V2

### LENGTH

Length	L (Length Code) ±0.13
1	1.00
2	2.00
3	3.00
4	4.00
5	5.00
6	6.00
7	7.00
8	8.00
9	9.00
10	10.00
11	11.00
12	12.00
13	13.00
14	14.00

### FINISH

Finish Code	Finish Description
Z	Zinc with Clear Chromate
Z-BLK	Zinc with Black Chromate
Z-YEL	Zinc with Yellow Chromate
NI	Electroplated Bright Nickel
BLK-OX	Black Oxide
CF	Clear Chemical Film
CF-GOLD	Gold Chemical Film
P	Passivated
PLN	Plain
TIN	Electroplated Bright Tin
TIN-MATTE	Electroplated Matte Tin

RSP 13mm Round Spacers

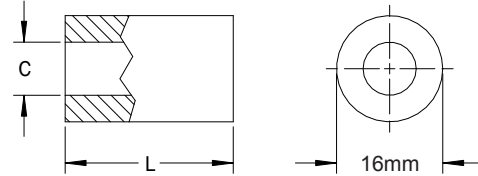
All dimensions in millimeters.  
Custom sizes, materials, and finishes available.

## 16mm Round Spacers

### PART DESCRIPTION EXAMPLE

RSP16 — 6.4 X 40.00 — STL — Z

Clearance Hole Code  
 Length Code  
 Material Code  
 Finish Code



### CLEARANCE HOLE

Thread	C (Clearance Hole Code) +0.3 -0.0
M4	4.3
M5	5.3
M6	6.4
M8	8.4
M10	10.5
M12	13.0

Length	L (Length Code) ±0.13
13	13.00
14	14.00
15	15.00
16	16.00
17	17.00
18	18.00
19	19.00
20	20.00
21	21.00
22	22.00
23	23.00
24	24.00
25	25.00
26	26.00
27	27.00
28	28.00
29	29.00
30	30.00
31	31.00
32	32.00
33	33.00
34	34.00
35	35.00
36	36.00

Length	L (Length Code) ±0.13
37	37.00
38	38.00
39	39.00
40	40.00
41	41.00
42	42.00
43	43.00
44	44.00
45	45.00
46	46.00
47	47.00
48	48.00
49	49.00
50	50.00
51	51.00

### MATERIAL

Material Code	Material Description
STL	Carbon Steel
SS	Stainless Steel
AL	Aluminum
BRS	Brass
NYVO	Nylon UL-94 V0
NYV2	Nylon UL-94-V2

### LENGTH

Length	L (Length Code) ±0.13
1	1.00
2	2.00
3	3.00
4	4.00
5	5.00
6	6.00
7	7.00
8	8.00
9	9.00
10	10.00
11	11.00
12	12.00

### FINISH

Finish Code	Finish Description
Z	Zinc with Clear Chromate
Z-BLK	Zinc with Black Chromate
Z-YEL	Zinc with Yellow Chromate
NI	Electroplated Bright Nickel
BLK-OX	Black Oxide
CF	Clear Chemical Film
CF-GOLD	Gold Chemical Film
P	Passivated
PLN	Plain
TIN	Electroplated Bright Tin
TIN-MATTE	Electroplated Matte Tin

RSP 16mm Round Spacers

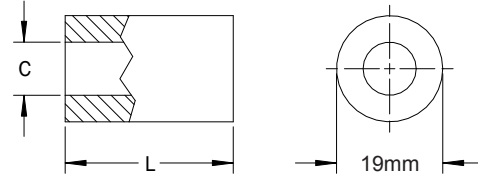
All dimensions in millimeters.  
Custom sizes, materials, and finishes available.

## 19mm Round Spacers

### PART DESCRIPTION EXAMPLE

RSP19 — 8.4 X 40.00 — STL — Z

Clearance Hole Code  
 Length Code  
 Material Code  
 Finish Code



### CLEARANCE HOLE

Thread	C (Clearance Hole Code) +0.3 -0.0
M4	4.3
M5	5.3
M6	6.4
M8	8.4
M10	10.5
M12	13.0
M14	15.0

Length	L (Length Code) ±0.13
12	12.00
13	13.00
14	14.00
15	15.00
16	16.00
17	17.00
18	18.00
19	19.00
20	20.00
21	21.00
22	22.00
23	23.00
24	24.00
25	25.00
26	26.00
27	27.00
28	28.00
29	29.00
30	30.00
31	31.00
32	32.00
33	33.00
34	34.00
35	35.00

Length	L (Length Code) ±0.13
36	36.00
37	37.00
38	38.00
39	39.00
40	40.00
41	41.00
42	42.00
43	43.00
44	44.00
45	45.00
46	46.00
47	47.00
48	48.00
49	49.00
50	50.00
51	51.00

### MATERIAL

Material Code	Material Description
STL	Carbon Steel
SS	Stainless Steel
AL	Aluminum
BRS	Brass
NYVO	Nylon UL-94 V0
NYV2	Nylon UL-94-V2

### LENGTH

Length	L (Length Code) ±0.13
1	1.00
2	2.00
3	3.00
4	4.00
5	5.00
6	6.00
7	7.00
8	8.00
9	9.00
10	10.00
11	11.00

### FINISH

Finish Code	Finish Description
Z	Zinc with Clear Chromate
Z-BLK	Zinc with Black Chromate
Z-YEL	Zinc with Yellow Chromate
NI	Electroplated Bright Nickel
BLK-OX	Black Oxide
CF	Clear Chemical Film
CF-GOLD	Gold Chemical Film
P	Passivated
PLN	Plain
TIN	Electroplated Bright Tin
TIN-MATTE	Electroplated Matte Tin

RSP 19mm Round Spacers

All dimensions in millimeters.  
Custom sizes, materials, and finishes available.