

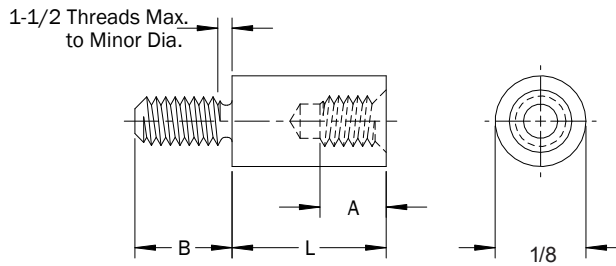
1/8 Round Male-Female Standoffs

PART DESCRIPTION EXAMPLE

RMF1/8 — 256F X .500 — 256M X .156 — STL — Z

T
T
T
T
T
T

Thread Code Body Length Code Thread Code Thread Length Code Material Code Finish Code



THREAD

Thread	Thread Code	A Min. (1)	B (Thread Length Code)
0-80	080	.187	.094
2-56	256	.187	.156

(1) A Min. may be reduced for shorter standoff lengths.

LENGTH

Length	L (Body Length Code) ±.005
1/8	.125
5/32	.156
3/16	.187
7/32	.219
1/4	.250
9/32	.281
5/16	.312
11/32	.344
3/8	.375
13/32	.406
7/16	.437
15/32	.469
1/2	.500
17/32	.531
9/16	.562

Length	L (Body Length Code) ±.005
19/32	.594
5/8	.625
21/32	.656
11/16	.687
23/32	.719
3/4	.750
25/32	.781
13/16	.812
27/32	.844
7/8	.875
29/32	.906
15/16	.937
31/32	.969
1	1.000

REDUCED THREAD DEPTHS

Length (3)	Thread	
	0-80	2-56
	A Min.	
1/8	.043	(1)
3/16	(2)	.077
1/4	(2)	.140

- (1) Standoffs with these thread size/length combinations are not available.
- (2) Thread depth A Min. follows standard thread depths for these lengths.
- (3) Thread depths may be interpolated for lengths not shown.

All dimensions in inches.
 Custom sizes, materials, and finishes available.

RMF 1/8 Round Male-Female Standoffs

1/8 Round Male-Female Standoffs

MATERIAL

Material Code	Material Description
STL	Carbon Steel
SS	Stainless Steel
AL	Aluminum
BRS	Brass
NYV0	Nylon UL-94 V0
NYV2	Nylon UL-94-V2

FINISH

Finish Code	Finish Description
Z	Zinc with Clear Chromate
Z-BLK	Zinc with Black Chromate
Z-YEL	Zinc with Yellow Chromate
NI	Electroplated Bright Nickel
BLK-OX	Black Oxide
CF	Clear Chemical Film
CF-GOLD	Gold Chemical Film
P	Passivated
PLN	Plain
TIN	Electroplated Bright Tin
TIN-MATTE	Electroplated Matte Tin

RMF 1/8 Round Male-Female Standoffs

All dimensions in inches.
 Custom sizes, materials, and finishes available.

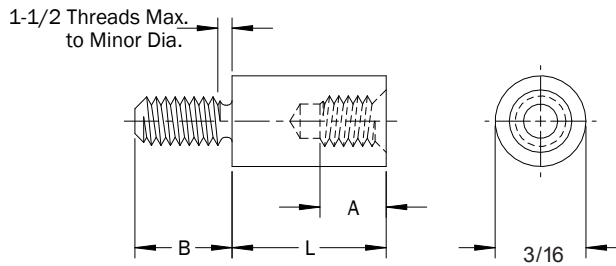
3/16 Round Male-Female Standoffs

PART DESCRIPTION EXAMPLE

RMF3/16 — 440F X .750 — 440M X .187 — STL — Z

T
T
T
T
T
T

Thread Code
Body Length Code
Thread Code
Thread Length Code
Material Code
Finish Code



THREAD

Thread	Thread Code	A Min. (1)	B (Thread Length) Code
2-56	256	.187	.156
4-40	440	.250	.187
6-32	632	.375	.250

(1) A Min. may be reduced for shorter standoff lengths.

LENGTH

Length	L (Body Length) Code ±.005
5/32	.156
3/16	.187
7/32	.219
1/4	.250
9/32	.281
5/16	.312
11/32	.344
3/8	.375
13/32	.406
7/16	.437
15/32	.469
1/2	.500
17/32	.531
9/16	.562
19/32	.594
5/8	.625
21/32	.656

Length	L (Body Length) Code ±.005
11/16	.687
23/32	.719
3/4	.750
25/32	.781
13/16	.812
27/32	.844
7/8	.875
29/32	.906
15/16	.937
31/32	.969
1	1.000
1-1/16	1.062
1-1/8	1.125
1-3/16	1.187
1-1/4	1.250
1-5/16	1.312
1-3/8	1.375

REDUCED THREAD DEPTHS

Length (3)	Thread		
	2-56	4-40	6-32
A Min.			
5/32	.046	(1)	(1)
3/16	.077	.070	(1)
1/4	.140	.133	.104
5/16	(2)	.195	.166
3/8	(2)	(2)	.229
7/16	(2)	(2)	.291
1/2	(2)	(2)	.354

(1) Standoffs with these thread size/length combinations are not available.
 (2) Thread depth A Min. follows standard thread depths for these lengths.
 (3) Thread depths may be interpolated for lengths not shown.

All dimensions in inches.
 Custom sizes, materials, and finishes available.

RMF 3/16 Round Male-Female Standoffs

3/16 Round Male-Female Standoffs

LENGTH (CONTINUED)

Length	L (Body Length) Code ±.005
1-7/16	1.437
1-1/2	1.500
1-9/16	1.562
1-5/8	1.625
1-11/16	1.687
1-3/4	1.750
1-13/16	1.812
1-7/8	1.875
1-15/16	1.937
2	2.000

MATERIAL

Material Code	Material Description
STL	Carbon Steel
SS	Stainless Steel
AL	Aluminum
BRS	Brass
NYVO	Nylon UL-94 V0
NYV2	Nylon UL-94-V2

FINISH

Finish Code	Finish Description
Z	Zinc with Clear Chromate
Z-BLK	Zinc with Black Chromate
Z-YEL	Zinc with Yellow Chromate
NI	Electroplated Bright Nickel
BLK-OX	Black Oxide
CF	Clear Chemical Film
CF-GOLD	Gold Chemical Film
P	Passivated
PLN	Plain
TIN	Electroplated Bright Tin
TIN-MATTE	Electroplated Matte Tin

RMF 3/16 Round Male-Female Standoffs

All dimensions in inches.
Custom sizes, materials, and finishes available.

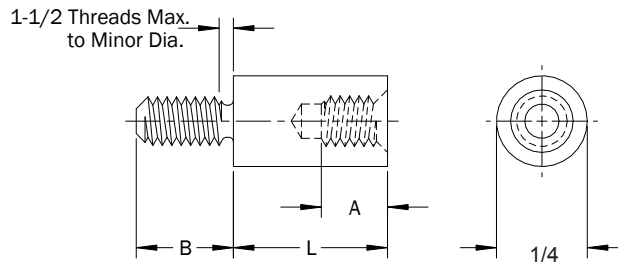
1/4 Round Male-Female Standoffs

PART DESCRIPTION EXAMPLE

RMF1/4 — 632F X 1.000 — 632M X .250 — STL — Z

T
T
T
T
T
T

Thread Code
Body Length Code
Thread Code
Thread Length Code
Material Code
Finish Code



THREAD

Thread	Thread Code	A Min. (1)	B (Thread Length) Code
2-56	256	.187	.156
4-40	440	.250	.187
6-32	632	.375	.250
8-32	832	.437	.375
10-32	1032	.500	.375

(1) A Min. may be reduced for shorter standoff lengths.

REDUCED THREAD DEPTHS

Length (3)	Thread				
	2-56	4-40	6-32	8-32	10-32
	A Min.				
5/32	.046	(1)	(1)	(1)	(1)
3/16	.077	.070	(1)	(1)	(1)
1/4	.140	.133	.104	.090	.078
5/16	(2)	.195	.166	.152	.140
3/8	(2)	(2)	.229	.215	.203
7/16	(2)	(2)	.291	.277	.265
1/2	(2)	(2)	.354	.340	.328
9/16	(2)	(2)	(2)	.402	.390
5/8	(2)	(2)	(2)	(2)	.453

(1) Standoffs with these thread size/length combinations are not available.

(2) Thread depth A Min. follows standard thread depths for these lengths.

(3) Thread depths may be interpolated for lengths not shown.

LENGTH

Length	L (Body Length) Code ±.005
5/32	.156
3/16	.187
7/32	.219
1/4	.250
9/32	.281
5/16	.312
11/32	.344
3/8	.375
13/32	.406
7/16	.437
15/32	.469
1/2	.500
17/32	.531
9/16	.562
19/32	.594
5/8	.625
21/32	.656
11/16	.687

All dimensions in inches.

Custom sizes, materials, and finishes available.

RMF 1/4 Round Male-Female Standoffs

1/4 Round Male-Female Standoffs

LENGTH (CONTINUED)

Length	L (Body Length) Code ±.005
23/32	.719
3/4	.750
25/32	.781
13/16	.812
27/32	.844
7/8	.875
29/32	.906
15/16	.937
31/32	.969
1	1.000
1-1/16	1.062
1-1/8	1.125
1-3/16	1.187
1-1/4	1.250
1-5/16	1.312
1-3/8	1.375
1-7/16	1.437
1-1/2	1.500
1-9/16	1.562

Length	L (Body Length) Code ±.005
1-5/8	1.625
1-11/16	1.687
1-3/4	1.750
1-13/16	1.812
1-7/8	1.875
1-15/16	1.937
2	2.000
2-1/8	2.125
2-1/4	2.250
2-1/2	2.500
2-5/8	2.625
2-3/4	2.750
2-7/8	2.875
3	3.000
3-1/4	3.250
3-1/2	3.500
3-3/4	3.750
4	4.000

MATERIAL

Material Code	Material Description
STL	Carbon Steel
SS	Stainless Steel
AL	Aluminum
BRS	Brass
NYVO	Nylon UL-94 V0
NYV2	Nylon UL-94-V2

FINISH

Finish Code	Finish Description
Z	Zinc with Clear Chromate
Z-BLK	Zinc with Black Chromate
Z-YEL	Zinc with Yellow Chromate
NI	Electroplated Bright Nickel
BLK-OX	Black Oxide
CF	Clear Chemical Film
CF-GOLD	Gold Chemical Film
P	Passivated
PLN	Plain
TIN	Electroplated Bright Tin
TIN-MATTE	Electroplated Matte Tin

RMF 1/4 Round Male-Female Standoffs

All dimensions in inches.
Custom sizes, materials, and finishes available.

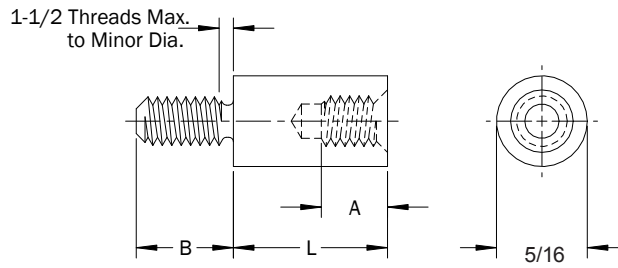
5/16 Round Male-Female Standoffs

PART DESCRIPTION EXAMPLE

RMF5/16 — 832F X 1.250 — 832M X .375 — STL — Z

T
T
T
T
T
T

Thread Code Body Length Code Thread Code Thread Length Code Material Code Finish Code



THREAD

Thread	Thread Code	A Min. (1)	B (Thread Length Code)
4-40	440	.250	.187
6-32	632	.375	.250
8-32	832	.437	.375
10-32	1032	.500	.375

(1) A Min. may be reduced for shorter standoff lengths.

REDUCED THREAD DEPTHS

Length (3)	Thread			
	4-40	6-32	8-32	10-32
A Min.				
3/16	.070	(1)	(1)	(1)
1/4	.133	.104	.090	.078
5/16	.195	.166	.152	.140
3/8	(2)	.229	.215	.203
7/16	(2)	.291	.277	.265
1/2	(2)	.354	.340	.328
9/16	(2)	(2)	.402	.390
5/8	(2)	(2)	(2)	.453

(1) Standoffs with these thread size/length combinations are not available.
 (2) Thread depth A Min. follows standard thread depths for these lengths.
 (3) Thread depths may be interpolated for lengths not shown.

LENGTH

Length	L (Body Length Code) ±.005
3/16	.187
7/32	.219
1/4	.250
9/32	.281
5/16	.312
11/32	.344
3/8	.375
13/32	.406
7/16	.437
15/32	.469
1/2	.500
17/32	.531
9/16	.562
19/32	.594
5/8	.625
21/32	.656
11/16	.687
23/32	.719

Length	L (Body Length Code) ±.005
3/4	.750
25/32	.781
13/16	.812
27/32	.844
7/8	.875
29/32	.906
15/16	.937
31/32	.969
1	1.000
1-1/16	1.062
1-1/8	1.125
1-3/16	1.187
1-1/4	1.250
1-5/16	1.312
1-3/8	1.375
1-7/16	1.437
1-1/2	1.500
1-9/16	1.562

All dimensions in inches.
 Custom sizes, materials, and finishes available.

RMF 5/16 Round Male-Female Standoffs

5/16 Round Male-Female Standoffs

LENGTH (CONTINUED)

Length	L (Body Length Code) ±.005
1-5/8	1.625
1-11/16	1.687
1-3/4	1.750
1-13/16	1.812
1-7/8	1.875
1-15/16	1.937
2	2.000
2-1/8	2.125
2-1/4	2.250
2-1/2	2.500
2-5/8	2.625
2-3/4	2.750
2-7/8	2.875
3	3.000
3-1/4	3.250
3-1/2	3.500
3-3/4	3.750
4	4.000
4-1/4	4.250
4-1/2	4.500
4-3/4	4.750
5	5.000
5-1/4	5.250
5-1/2	5.500
5-3/4	5.750
6	6.000

MATERIAL

Material Code	Material Description
STL	Carbon Steel
SS	Stainless Steel
AL	Aluminum
BRS	Brass
NYVO	Nylon UL-94 V0
NYV2	Nylon UL-94-V2

FINISH

Finish Code	Finish Description
Z	Zinc with Clear Chromate
Z-BLK	Zinc with Black Chromate
Z-YEL	Zinc with Yellow Chromate
NI	Electroplated Bright Nickel
BLK-OX	Black Oxide
CF	Clear Chemical Film
CF-GOLD	Gold Chemical Film
P	Passivated
PLN	Plain
TIN	Electroplated Bright Tin
TIN-MATTE	Electroplated Matte Tin

RMF 5/16 Round Male-Female Standoffs

All dimensions in inches.
Custom sizes, materials, and finishes available.

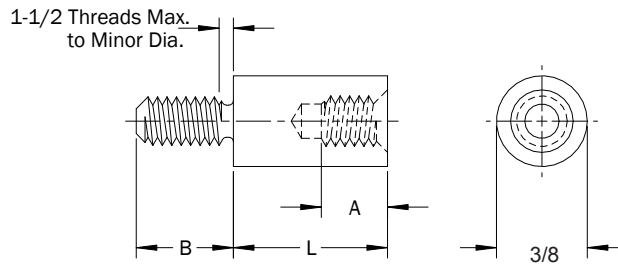
3/8 Round Male-Female Standoffs

PART DESCRIPTION EXAMPLE

RMF3/8 — 1032F X 1.500 — 1032M X .375 — STL — Z

T
T
T
T
T
T

Thread Code Body Length Code Thread Code Thread Length Code Material Code Finish Code



THREAD

Thread	Thread Code	A Min. (1)	B (Thread Length) Code
4-40	440	.250	.187
6-32	632	.375	.250
8-32	832	.437	.375
10-32	1032	.500	.375
12-24	1224	.500	.375
1/4-20	2520	.625	.500

(1) A Min. may be reduced for shorter standoff lengths.

REDUCED THREAD DEPTHS

Length (3)	Thread					
	4-40	6-32	8-32	10-32	12-24	1/4-20
	A Min.					
3/16	.070	(1)	(1)	(1)	(1)	(1)
1/4	.133	.104	.090	.078	(1)	(1)
5/16	.195	.166	.152	.140	.103	(1)
3/8	(2)	.229	.215	.203	.166	.146
7/16	(2)	.291	.277	.265	.228	.208
1/2	(2)	.354	.340	.328	.291	.271
9/16	(2)	(2)	.402	.390	.353	.333
5/8	(2)	(2)	(2)	.453	.416	.396
11/16	(2)	(2)	(2)	(2)	.478	.458
3/4	(2)	(2)	(2)	(2)	(2)	.521
13/16	(2)	(2)	(2)	(2)	(2)	.583

- (1) Standoffs with these thread size/length combinations are not available.
- (2) Thread depth A Min. follows standard thread depths for these lengths.
- (3) Thread depths may be interpolated for lengths not shown.

RMF 3/8 Round Male-Female Standoffs

All dimensions in inches.
Custom sizes, materials, and finishes available.

3/8 Round Male-Female Standoffs

LENGTH

Length	L (Body Length Code) ±.005
3/16	.187
7/32	.219
1/4	.250
9/32	.281
5/16	.312
11/32	.344
3/8	.375
13/32	.406
7/16	.437
15/32	.469
1/2	.500
17/32	.531
9/16	.562
19/32	.594
5/8	.625
21/32	.656

Length	L (Body Length Code) ±.005
11/16	.687
23/32	.719
3/4	.750
25/32	.781
13/16	.812
27/32	.844
7/8	.875
29/32	.906
15/16	.937
31/32	.969
1	1.000
1-1/16	1.062
1-1/8	1.125
1-3/16	1.187
1-1/4	1.250
1-5/16	1.312

Length	L (Body Length Code) ±.005
1-3/8	1.375
1-7/16	1.437
1-1/2	1.500
1-9/16	1.562
1-5/8	1.625
1-11/16	1.687
1-3/4	1.750
1-13/16	1.812
1-7/8	1.875
1-15/16	1.937
2	2.000
2-1/8	2.125
2-1/4	2.250
2-1/2	2.500
2-5/8	2.625
2-3/4	2.750

Length	L (Body Length Code) ±.005
2-7/8	2.875
3	3.000
3-1/4	3.250
3-1/2	3.500
3-3/4	3.750
4	4.000
4-1/4	4.250
4-1/2	4.500
4-3/4	4.750
5	5.000
5-1/4	5.250
5-1/2	5.500
5-3/4	5.750
6	6.000

MATERIAL

Material Code	Material Description
STL	Carbon Steel
SS	Stainless Steel
AL	Aluminum
BRS	Brass
NYVO	Nylon UL-94 V0
NYV2	Nylon UL-94-V2

FINISH

Finish Code	Finish Description
Z	Zinc with Clear Chromate
Z-BLK	Zinc with Black Chromate
Z-YEL	Zinc with Yellow Chromate
NI	Electroplated Bright Nickel
BLK-OX	Black Oxide
CF	Clear Chemical Film
CF-GOLD	Gold Chemical Film
P	Passivated
PLN	Plain
TIN	Electroplated Bright Tin
TIN-MATTE	Electroplated Matte Tin

All dimensions in inches.
Custom sizes, materials, and finishes available.

RMF 3/8 Round Male-Female Standoffs

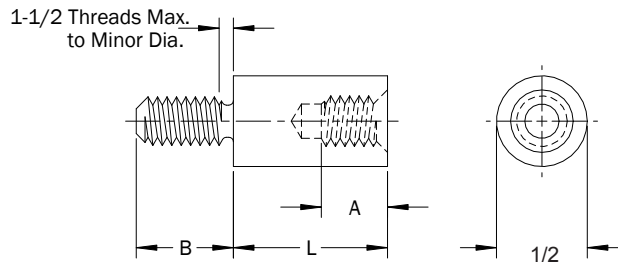
1/2 Round Male-Female Standoffs

PART DESCRIPTION EXAMPLE

RMF1/2 — 2520F X 1.750 — 2520M X .500 — STL — Z

T
T
T
T
T
T

Thread Code Body Length Code Thread Code Thread Length Code Material Code Finish Code



THREAD

Thread	Thread Code	A Min. (1)	B (Thread Length) Code
6-32	632	.375	.250
8-32	832	.437	.375
10-32	1032	.500	.375
12-24	1224	.500	.375
1/4-20	2520	.625	.500
5/16-18	3118	.625	.500

(1) A Min. may be reduced for shorter standoff lengths.

REDUCED THREAD DEPTHS

Length (3)	Thread					
	6-32	8-32	10-32	12-24	1/4-20	5/16-18
	A Min.					
1/4	.104	.090	.078	(1)	(1)	(1)
5/16	.166	.152	.140	.103	(1)	(1)
3/8	.229	.215	.203	.166	.146	.119
7/16	.291	.277	.265	.228	.208	.181
1/2	.354	.340	.328	.291	.271	.244
9/16	(2)	.402	.390	.353	.333	.306
5/8	(2)	(2)	.453	.416	.396	.369
11/16	(2)	(2)	(2)	.478	.458	.431
3/4	(2)	(2)	(2)	(2)	.521	.494
13/16	(2)	(2)	(2)	(2)	.583	.556
7/8	(2)	(2)	(2)	(2)	(2)	.619

- (1) Standoffs with these thread size/length combinations are not available.
- (2) Thread depth A Min. follows standard thread depths for these lengths.
- (3) Thread depths may be interpolated for lengths not shown.

RMF 1/2 Round Male-Female Standoffs

All dimensions in inches.
Custom sizes, materials, and finishes available.

1/2 Round Male-Female Standoffs

LENGTH

Length	L (Body Length Code) ±.005
1/4	.250
9/32	.281
5/16	.312
11/32	.344
3/8	.375
13/32	.406
7/16	.437
15/32	.469
1/2	.500
17/32	.531
9/16	.562
19/32	.594
5/8	.625
21/32	.656
11/16	.687
23/32	.719
3/4	.750

Length	L (Body Length Code) ±.005
25/32	.781
13/16	.812
27/32	.844
7/8	.875
29/32	.906
15/16	.937
31/32	.969
1	1.000
1-1/16	1.062
1-1/8	1.125
1-3/16	1.187
1-1/4	1.250
1-5/16	1.312
1-3/8	1.375
1-7/16	1.437
1-1/2	1.500
1-9/16	1.562

Length	L (Body Length Code) ±.005
1-5/8	1.625
1-11/16	1.687
1-3/4	1.750
1-13/16	1.812
1-7/8	1.875
1-15/16	1.937
2	2.000
2-1/8	2.125
2-1/4	2.250
2-1/2	2.500
2-5/8	2.625
2-3/4	2.750
2-7/8	2.875
3	3.000
3-1/4	3.250
3-1/2	3.500
3-3/4	3.750

Length	L (Body Length Code) ±.005
4	4.000
4-1/4	4.250
4-1/2	4.500
4-3/4	4.750
5	5.000
5-1/4	5.250
5-1/2	5.500
5-3/4	5.750
6	6.000
6-1/4	6.250
6-1/2	6.500
6-3/4	6.750
7	7.000
7-1/4	7.250
7-1/2	7.500
7-3/4	7.750
8	8.000

MATERIAL

Material Code	Material Description
STL	Carbon Steel
SS	Stainless Steel
AL	Aluminum
BRS	Brass
NYVO	Nylon UL-94 V0
NYV2	Nylon UL-94-V2

FINISH

Finish Code	Finish Description
Z	Zinc with Clear Chromate
Z-BLK	Zinc with Black Chromate
Z-YEL	Zinc with Yellow Chromate
NI	Electroplated Bright Nickel
BLK-OX	Black Oxide
CF	Clear Chemical Film
CF-GOLD	Gold Chemical Film
P	Passivated
PLN	Plain
TIN	Electroplated Bright Tin
TIN-MATTE	Electroplated Matte Tin

All dimensions in inches.
Custom sizes, materials, and finishes available.

RMF 1/2 Round Male-Female Standoffs

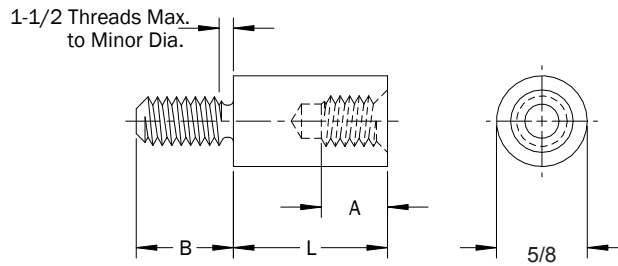
5/8 Round Male-Female Standoffs

PART DESCRIPTION EXAMPLE

RMF5/8 — 3118F X 2.000 — 3118M X .625 — STL — Z

T
T
T
T
T
T

Thread Code Body Length Code Thread Code Thread Length Code Material Code Finish Code



THREAD

Thread	Thread Code	A Min. (1)	B (Thread Length Code)
8-32	832	.437	.375
10-32	1032	.500	.375
12-24	1224	.500	.375
1/4-20	2520	.625	.500
5/16-18	3118	.625	.500
3/8-16	3716	.625	.625
7/16-14	4314	.625	.625

(1) A Min. may be reduced for shorter standoff lengths.

REDUCED THREAD DEPTHS

Length (3)	Thread						
	8-32	10-32	12-24	1/4-20	5/16-18	3/8-16	7/16-14
	A Min						
1/4	.090	.078	(1)	(1)	(1)	(1)	(1)
5/16	.152	.140	.103	(1)	(1)	(1)	(1)
3/8	.215	.203	.166	.146	.119	(1)	(1)
7/16	.277	.265	.228	.208	.181	.146	(1)
1/2	.340	.328	.291	.271	.244	.209	.184
9/16	.402	.390	.353	.333	.306	.271	.246
5/8	(2)	.453	.416	.396	.369	.334	.309
11/16	(2)	(2)	.478	.458	.431	.396	.371
3/4	(2)	(2)	(2)	.521	.494	.459	.434
13/16	(2)	(2)	(2)	.583	.556	.521	.496
7/8	(2)	(2)	(2)	(2)	.619	.584	.559
29/32	(2)	(2)	(2)	(2)	(2)	.615	.590
15/16	(2)	(2)	(2)	(2)	(2)	(2)	.621

- (1) Standoffs with these thread size/length combinations are not available.
- (2) Thread depth A Min. follows standard thread depths for these lengths.
- (3) Thread depths may be interpolated for lengths not shown.

RMF 5/8 Round Male-Female Standoffs

All dimensions in inches.
Custom sizes, materials, and finishes available.

5/8 Round Male-Female Standoffs

LENGTH

Length	L (Body Length Code) ±.005
1/4	.250
9/32	.281
5/16	.312
11/32	.344
3/8	.375
13/32	.406
7/16	.437
15/32	.469
1/2	.500
17/32	.531
9/16	.562
19/32	.594
5/8	.625
21/32	.656
11/16	.687
23/32	.719
3/4	.750

Length	L (Body Length Code) ±.005
25/32	.781
13/16	.812
27/32	.844
7/8	.875
29/32	.906
15/16	.937
31/32	.969
1	1.000
1-1/16	1.062
1-1/8	1.125
1-3/16	1.187
1-1/4	1.250
1-5/16	1.312
1-3/8	1.375
1-7/16	1.437
1-1/2	1.500
1-9/16	1.562

Length	L (Body Length Code) ±.005
1-5/8	1.625
1-11/16	1.687
1-3/4	1.750
1-13/16	1.812
1-7/8	1.875
1-15/16	1.937
2	2.000
2-1/8	2.125
2-1/4	2.250
2-1/2	2.500
2-5/8	2.625
2-3/4	2.750
2-7/8	2.875
3	3.000
3-1/4	3.250
3-1/2	3.500
3-3/4	3.750

Length	L (Body Length Code) ±.005
4	4.000
4-1/4	4.250
4-1/2	4.500
4-3/4	4.750
5	5.000
5-1/4	5.250
5-1/2	5.500
5-3/4	5.750
6	6.000
6-1/4	6.250
6-1/2	6.500
6-3/4	6.750
7	7.000
7-1/4	7.250
7-1/2	7.500
8	8.000

MATERIAL

Material Code	Material Description
STL	Carbon Steel
SS	Stainless Steel
AL	Aluminum
BRS	Brass
NYVO	Nylon UL-94 V0
NYV2	Nylon UL-94-V2

FINISH

Finish Code	Finish Description
Z	Zinc with Clear Chromate
Z-BLK	Zinc with Black Chromate
Z-YEL	Zinc with Yellow Chromate
NI	Electroplated Bright Nickel
BLK-OX	Black Oxide
CF	Clear Chemical Film
CF-GOLD	Gold Chemical Film
P	Passivated
PLN	Plain
TIN	Electroplated Bright Tin
TIN-MATTE	Electroplated Matte Tin

All dimensions in inches.
Custom sizes, materials, and finishes available.

RMF 5/8 Round Male-Female Standoffs

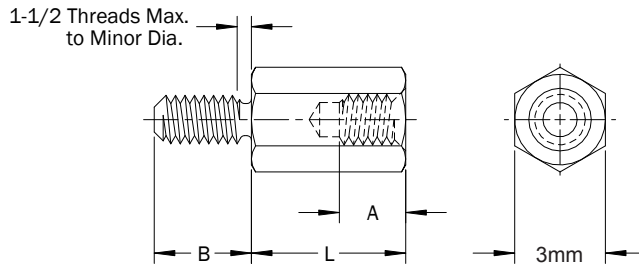
3mm Round Male-Female Standoffs

PART DESCRIPTION EXAMPLE

RMF3 — M2F X 25.00 — M2M X 3.18 — STL — Z

T
T
T
T
T
T

Thread Code Body Length Code Thread Code Thread Length Code Material Code Finish Code



THREAD

Thread	Thread Code	A Min. (1)	B (Thread Length) Code
M1 x 0.25	M1	2.78	1.59
M1.2 x 0.25	M1.2	3.18	1.98
M1.4 x 0.3	M1.4	3.97	2.38
M1.6 x 0.35	M1.6	4.76	2.54
M2 x 0.4	M2	4.76	3.18

(1) A Min. may be reduced for shorter standoff lengths.

REDUCED THREAD DEPTHS

Length	Thread				
	M1	M1.2	M1.4	M1.6	M2
	A Min.				
3	1.34	1.28	1.01	(1)	(1)
4	2.34	2.28	2.01	1.78	1.46
5	(2)	(2)	3.01	2.78	2.46
6	(2)	(2)	(2)	3.78	3.46
7	(2)	(2)	(2)	(2)	4.46

(1) Standoffs with these thread size/length combinations are not available.
 (2) Thread depth A Min. follows standard thread depths for these lengths.

LENGTH

Length	L (Body Length) Code ±0.13
3	3.00
4	4.00
5	5.00
6	6.00
7	7.00
8	8.00
9	9.00
10	10.00
11	11.00
12	12.00
13	13.00
14	14.00
15	15.00
16	16.00
17	17.00
18	18.00

Length	L (Body Length) Code ±0.13
19	19.00
20	20.00
21	21.00
22	22.00
23	23.00
24	24.00
25	25.00
28	28.00
31	31.00
34	34.00
37	37.00
40	40.00
43	43.00
46	46.00
49	49.00
52	52.00

RMF 3mm Round Male-Female Standoffs

All dimensions in millimeters.
 Custom sizes, materials, and finishes available.

3mm Round Male-Female Standoffs

MATERIAL

Material Code	Material Description
STL	Carbon Steel
SS	Stainless Steel
AL	Aluminum
BRS	Brass
NYV0	Nylon UL-94 V0
NYV2	Nylon UL-94-V2

FINISH

Finish Code	Finish Description
Z	Zinc with Clear Chromate
Z-BLK	Zinc with Black Chromate
Z-YEL	Zinc with Yellow Chromate
NI	Electroplated Bright Nickel
BLK-OX	Black Oxide
CF	Clear Chemical Film
CF-GOLD	Gold Chemical Film
P	Passivated
PLN	Plain
TIN	Electroplated Bright Tin
TIN-MATTE	Electroplated Matte Tin

RMF 3mm Round Male-Female Standoffs

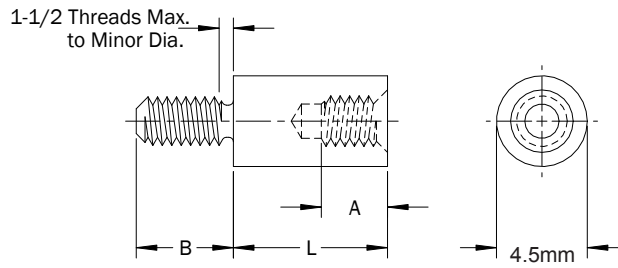
4.5mm Round Male-Female Standoffs

PART DESCRIPTION EXAMPLE

RMF4.5 — M3F X 25.00 — M3M X 4.76 — STL — Z

T
T
T
T
T
T

Thread Code Body Length Code Thread Code Thread Length Code Material Code Finish Code



THREAD

Thread	Thread Code	A Min. (1)	B (Thread Length Code)
M1.6 x 0.35	M1.6	4.76	2.54
M2 x 0.4	M2	4.76	3.18
M2.5 x 0.45	M2.5	4.76	3.97
M3 x 0.5	M3	6.35	4.76

(1) A Min. may be reduced for shorter standoff lengths.

LENGTH

Length	L (Body Length Code) ±0.13
4	4.00
5	5.00
6	6.00
7	7.00
8	8.00
9	9.00
10	10.00
11	11.00
12	12.00
13	13.00
14	14.00
15	15.00
16	16.00
17	17.00
18	18.00
19	19.00

Length	L (Body Length Code) ±0.13
20	20.00
21	21.00
22	22.00
23	23.00
24	24.00
25	25.00
28	28.00
31	31.00
34	34.00
37	37.00
40	40.00
43	43.00
46	46.00
49	49.00
52	52.00

REDUCED THREAD DEPTHS

Length	Thread			
	M1.6	M2	M2.5	M3
	A Min.			
4	1.78	1.46	1.20	(1)
5	2.78	2.46	2.20	2.10
6	3.78	3.46	3.20	3.10
7	(2)	4.46	4.20	4.10
8	(2)	(2)	(2)	5.10
9	(2)	(2)	(2)	6.10

(1) Standoffs with these thread size/length combinations are not available.
 (2) Thread depth A Min. follows standard thread depths for these lengths.

RMF 4.5mm Round Male-Female Standoffs

All dimensions in millimeters.
 Custom sizes, materials, and finishes available.

4.5mm Round Male-Female Standoffs

MATERIAL

Material Code	Material Description
STL	Carbon Steel
SS	Stainless Steel
AL	Aluminum
BRS	Brass
NYVO	Nylon UL-94 V0
NYV2	Nylon UL-94-V2

FINISH

Finish Code	Finish Description
Z	Zinc with Clear Chromate
Z-BLK	Zinc with Black Chromate
Z-YEL	Zinc with Yellow Chromate
NI	Electroplated Bright Nickel
BLK-OX	Black Oxide
CF	Clear Chemical Film
CF-GOLD	Gold Chemical Film
P	Passivated
PLN	Plain
TIN	Electroplated Bright Tin
TIN-MATTE	Electroplated Matte Tin

RMF 4.5mm Round Male-Female Standoffs

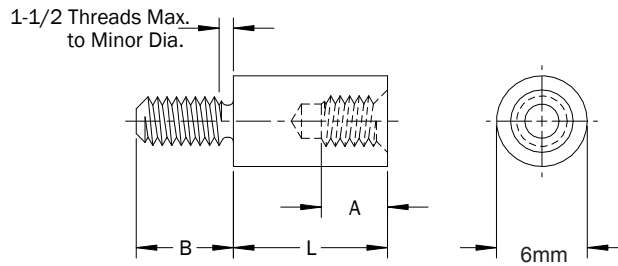
6mm Round Male-Female Standoffs

PART DESCRIPTION EXAMPLE

RMF6 — M3.5F X 25.00 — M3.5M X 6.35 — STL — Z

T
T
T
T
T
T

Thread Code
Body Length Code
Thread Code
Thread Length Code
Material Code
Finish Code



THREAD

Thread	Thread Code	A Min. (1)	B (Thread Length Code)
M2.5 x 0.45	M2.5	4.76	3.97
M3 x 0.5	M3	6.35	4.76
M3.5 x 0.6	M3.5	9.53	6.35
M4 x 0.7	M4	11.10	9.53

(1) A Min. may be reduced for shorter standoff lengths.

REDUCED THREAD DEPTHS

Length	Thread			
	M2.5	M3	M3.5	M4
A Min.				
4	1.2	(1)	(1)	(1)
5	2.2	2.1	(1)	(1)
6	3.2	3.1	2.3	(1)
7	4.2	4.1	3.3	3.0
8	(2)	5.1	4.3	4.0
9	(2)	6.1	5.3	5.0
10	(2)	(2)	6.3	6.0
11	(2)	(2)	7.3	7.0
12	(2)	(2)	8.3	8.0
13	(2)	(2)	9.3	9.0
14	(2)	(2)	(2)	10.0
15	(2)	(2)	(2)	11.0

(1) Standoffs with these thread size/length combinations are not available.
 (2) Thread depth A Min. follows standard thread depths for these lengths.

RMF 6mm Round Male-Female Standoffs

All dimensions in millimeters.
 Custom sizes, materials, and finishes available.

6mm Round Male-Female Standoffs

LENGTH

Length	L (Body Length Code) ±0.13
4	4.00
5	5.00
6	6.00
7	7.00
8	8.00
9	9.00
10	10.00
11	11.00
12	12.00
13	13.00
14	14.00
15	15.00
16	16.00
17	17.00
18	18.00
19	19.00

Length	L (Body Length Code) ±0.13
20	20.00
21	21.00
22	22.00
23	23.00
24	24.00
25	25.00
28	28.00
31	31.00
34	34.00
37	37.00
40	40.00
43	43.00
46	46.00
49	49.00
52	52.00

MATERIAL

Material Code	Material Description
STL	Carbon Steel
SS	Stainless Steel
AL	Aluminum
BRS	Brass
NYVO	Nylon UL-94 V0
NYV2	Nylon UL-94-V2

FINISH

Finish Code	Finish Description
Z	Zinc with Clear Chromate
Z-BLK	Zinc with Black Chromate
Z-YEL	Zinc with Yellow Chromate
NI	Electroplated Bright Nickel
BLK-OX	Black Oxide
CF	Clear Chemical Film
CF-GOLD	Gold Chemical Film
P	Passivated
PLN	Plain
TIN	Electroplated Bright Tin
TIN-MATTE	Electroplated Matte Tin

RMF 6mm Round Male-Female Standoffs

All dimensions in millimeters.
Custom sizes, materials, and finishes available.

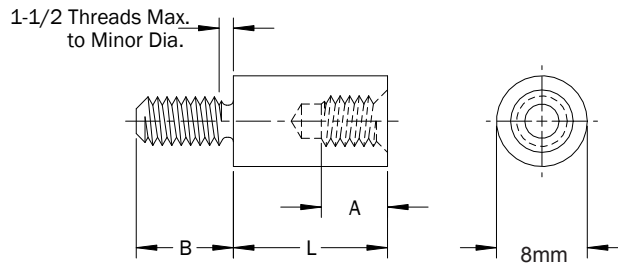
8mm Round Male-Female Standoffs

PART DESCRIPTION EXAMPLE

RMF8 — M4F X 25.00 — M4M X 9.53 — STL — Z

T
T
T
T
T
T

Thread Code
Body Length Code
Thread Code
Thread Length Code
Material Code
Finish Code



THREAD

Thread	Thread Code	A Min. (1)	B (Thread Length Code)
M3 x 0.5	M3	6.35	4.76
M3.5 x 0.6	M3.5	9.53	6.35
M4 x 0.7	M4	11.10	9.53
M5 X 0.8	M5	12.70	9.53

(1) A Min. may be reduced for shorter standoff lengths.

REDUCED THREAD DEPTHS

Length	Thread			
	M3	M3.5	M4	M5
	A Min.			
5	2.1	(1)	(1)	(1)
6	3.1	2.3	(1)	(1)
7	4.1	3.3	3.0	(1)
8	5.1	4.3	4.0	3.6
9	6.1	5.3	5.0	4.6
10	(2)	6.3	6.0	5.6
11	(2)	7.3	7.0	6.6
12	(2)	8.3	8.0	7.6
13	(2)	9.3	9.0	8.6
14	(2)	(2)	10.0	9.6
15	(2)	(2)	11.0	10.6
16	(2)	(2)	(2)	11.6
17	(2)	(2)	(2)	12.6

(1) Standoffs with these thread size/length combinations are not available.
 (2) Thread depth A Min. follows standard thread depths for these lengths.

RMF 8mm Round Male-Female Standoffs

All dimensions in millimeters.
 Custom sizes, materials, and finishes available.

8mm Round Male-Female Standoffs

LENGTH

Length	L (Body Length Code ±0.13)
5	5.00
6	6.00
7	7.00
8	8.00
9	9.00
10	10.00
11	11.00
12	12.00
13	13.00
14	14.00
15	15.00
16	16.00
17	17.00
18	18.00
19	19.00

Length	L (Body Length Code ±0.13)
20	20.00
21	21.00
22	22.00
23	23.00
24	24.00
25	25.00
28	28.00
31	31.00
34	34.00
37	37.00
40	40.00
43	43.00
46	46.00
49	49.00
52	52.00

MATERIAL

Material Code	Material Description
STL	Carbon Steel
SS	Stainless Steel
AL	Aluminum
BRS	Brass
NYVO	Nylon UL-94 V0
NYV2	Nylon UL-94-V2

FINISH

Finish Code	Finish Description
Z	Zinc with Clear Chromate
Z-BLK	Zinc with Black Chromate
Z-YEL	Zinc with Yellow Chromate
NI	Electroplated Bright Nickel
BLK-OX	Black Oxide
CF	Clear Chemical Film
CF-GOLD	Gold Chemical Film
P	Passivated
PLN	Plain
TIN	Electroplated Bright Tin
TIN-MATTE	Electroplated Matte Tin

RMF 8mm Round Male-Female Standoffs

All dimensions in millimeters.
Custom sizes, materials, and finishes available.

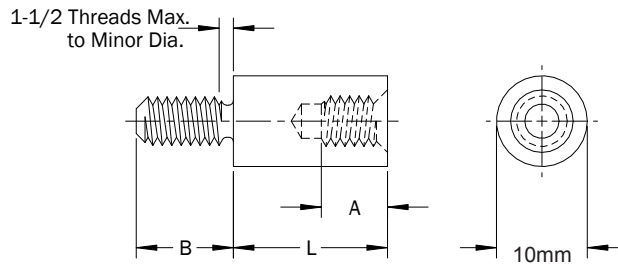
10mm Round Male-Female Standoffs

PART DESCRIPTION EXAMPLE

RMF10 — M5F X 25.00 — M5M X 9.53 — STL — Z

T
T
T
T
T
T

Thread Code Body Length Code Thread Code Thread Length Code Material Code Finish Code



THREAD

Thread	Thread Code	A Min. (1)	B (Thread Length Code)
M3 x 0.5	M3	6.35	4.76
M3.5 x 0.6	M3.5	9.53	6.35
M4 x 0.7	M4	11.10	9.53
M5 X 0.8	M5	12.70	9.53

(1) A Min. may be reduced for shorter standoff lengths.

REDUCED THREAD DEPTHS

Length	Thread			
	M3	M3.5	M4	M5
	A Min.			
5	2.1	(1)	(1)	(1)
6	3.1	2.3	(1)	(1)
7	4.1	3.3	3.0	(1)
8	5.1	4.3	4.0	3.6
9	6.1	5.3	5.0	4.6
10	(2)	6.3	6.0	5.6
11	(2)	7.3	7.0	6.6
12	(2)	8.3	8.0	7.6
13	(2)	9.3	9.0	8.6
14	(2)	(2)	10.0	9.6
15	(2)	(2)	11.0	10.6
16	(2)	(2)	(2)	11.6
17	(2)	(2)	(2)	12.6

(1) Standoffs with these thread size/length combinations are not available.
 (2) Thread depth A Min. follows standard thread depths for these lengths.

RMF 10mm Round Male-Female Standoffs

All dimensions in millimeters.
 Custom sizes, materials, and finishes available.

10mm Round Male-Female Standoffs

LENGTH

Length	L (Body Length Code ±0.13)
5	5.00
6	6.00
7	7.00
8	8.00
9	9.00
10	10.00
11	11.00
12	12.00
13	13.00
14	14.00
15	15.00
16	16.00
17	17.00
18	18.00
19	19.00

Length	L (Body Length Code ±0.13)
20	20.00
21	21.00
22	22.00
23	23.00
24	24.00
25	25.00
28	28.00
31	31.00
34	34.00
37	37.00
40	40.00
43	43.00
46	46.00
49	49.00
52	52.00

MATERIAL

Material Code	Material Description
STL	Carbon Steel
SS	Stainless Steel
AL	Aluminum
BRS	Brass
NYVO	Nylon UL-94 V0
NYV2	Nylon UL-94-V2

FINISH

Finish Code	Finish Description
Z	Zinc with Clear Chromate
Z-BLK	Zinc with Black Chromate
Z-YEL	Zinc with Yellow Chromate
NI	Electroplated Bright Nickel
BLK-OX	Black Oxide
CF	Clear Chemical Film
CF-GOLD	Gold Chemical Film
P	Passivated
PLN	Plain
TIN	Electroplated Bright Tin
TIN-MATTE	Electroplated Matte Tin

RMF 10mm Round Male-Female Standoffs

All dimensions in millimeters.
Custom sizes, materials, and finishes available.

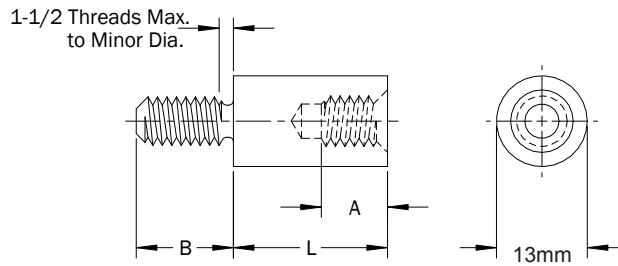
13mm Round Male-Female Standoffs

PART DESCRIPTION EXAMPLE

RMF13 — M6F X 25.00 — M6M X 12.70 — STL — Z

T
T
T
T
T
T

Thread Code
Length Code
Thread Code
Thread Length Code
Material Code
Finish Code



THREAD

Thread	Thread Code	A Min. (1)	B (Thread Length Code)
M4 x 0.7	M4	11.10	9.53
M5 x 0.8	M5	12.70	9.53
M6 x 1.0	M6	15.00	12.70
M8 x 1.25	M8	15.00	12.70

(1) A Min. may be reduced for shorter standoff lengths.

REDUCED THREAD DEPTHS

Length	Thread			
	M4	M5	M6	M8
	A Min.			
7	3.0	(1)	(1)	(1)
8	4.0	3.6	(1)	(1)
9	5.0	4.6	3.2	(1)
10	6.0	5.6	4.2	3.5
11	7.0	6.6	5.2	4.5
12	8.0	7.6	6.2	5.5
13	9.0	8.6	7.2	6.5
14	10.0	9.6	8.2	7.5
15	11.0	10.6	9.2	8.5
16	(2)	11.6	10.2	9.5
17	(2)	12.6	11.2	10.5
18	(2)	(2)	12.2	11.5
19	(2)	(2)	13.2	12.5
20	(2)	(2)	(2)	13.5

(1) Standoffs with these thread size/length combinations are not available.
 (2) Thread depth A Min. follows standard thread depths for these lengths.

RMF 13mm Round Male-Female Standoffs

All dimensions in millimeters.
 Custom sizes, materials, and finishes available.

13mm Round Male-Female Standoffs

LENGTH

Length	L (Body Length Code) ±0.13
7	7.00
8	8.00
9	9.00
10	10.00
11	11.00
12	12.00
13	13.00
14	14.00
15	15.00
16	16.00
17	17.00
18	18.00
19	19.00
20	20.00

Length	L (Body Length Code) ±0.13
21	21.00
22	22.00
23	23.00
24	24.00
25	25.00
28	28.00
31	31.00
34	34.00
37	37.00
40	40.00
43	43.00
46	46.00
49	49.00
52	52.00

MATERIAL

Material Code	Material Description
STL	Carbon Steel
SS	Stainless Steel
AL	Aluminum
BRS	Brass
NYVO	Nylon UL-94 V0
NYV2	Nylon UL-94-V2

FINISH

Finish Code	Finish Description
Z	Zinc with Clear Chromate
Z-BLK	Zinc with Black Chromate
Z-YEL	Zinc with Yellow Chromate
NI	Electroplated Bright Nickel
BLK-OX	Black Oxide
CF	Clear Chemical Film
CF-GOLD	Gold Chemical Film
P	Passivated
PLN	Plain
TIN	Electroplated Bright Tin
TIN-MATTE	Electroplated Matte Tin

RMF 13mm Round Male-Female Standoffs

All dimensions in millimeters.
Custom sizes, materials, and finishes available.