

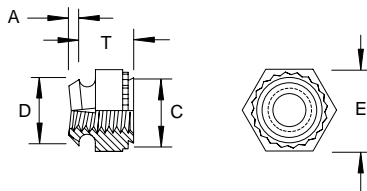
NM - Nuts

Self-Clinching, Locking

Inch

Sample Part Number

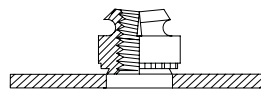
NMST - 632 - .038 - BDF
 Series/ Thread Shank Finish
 Material Code



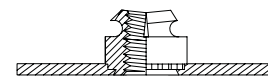
Thread	Thread Code	A Shank MAX	Sheet Thickness MIN	Hole Size in Sheet +.003/-0.000	C MAX	D MAX	E NOM	T ±.010	Dist. Hole C/L to Edge MIN
2 - 56	256	.038	.040	.172	.171	.165	.250	.135	.156
		.054	.056						
4 - 40	440	.038	.040	.187	.186	.185	.250	.135	.156
		.054	.056						
6 - 32	632	.038	.040	.219	.218	.220	.312	.145	.187
		.054	.056						
8 - 32	832	.038	.040	.266	.265	.250	.343	.175	.203
		.054	.056						
10 - 32	1032	.038	.040	.312	.311	.300	.375	.205	.218
		.054	.056						

Custom sizes available.

Material	Description	Finish	Description
ST	Carbon Steel	DF	Black dry-film lubricant
SS	300 Series Stainless Steel	DF	Black dry-film lubricant
AL	Aluminum	PLN	Plain



Pre Installation



Post Installation

All Dimensions are in Inches

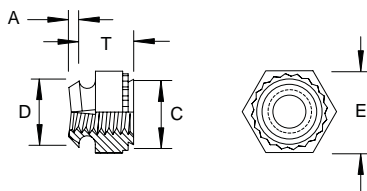
NM - Nuts

Self-Clinching, Locking

Metric

Sample Part Number

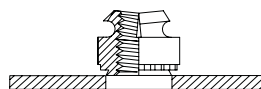
NMST - M4 - 1.38 - BDF
 Series/ Thread Shank Finish
 Material Code



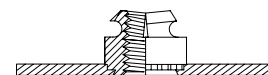
Thread	Thread Code	A Shank MAX	Sheet Thickness MIN	Hole Size in Sheet +0.08/-0.00	C MAX	D MAX	E NOM	T ±0.25	Dist. Hole C/L to Edge MIN
M2.5 x 0.45	M2.5	0.97	1	4.37	4.35	4.45	6.35	3.43	3.9
		1.38	1.4						
M3 x 0.5	M3	0.97	1	4.75	4.73	4.85	6.35	3.43	4
		1.38	1.4						
M4 x 0.7	M4	0.97	1	6.76	6.73	6.2	8.73	4.45	5.2
		1.38	1.4						
M5 x 0.8	M5	0.97	1	7.92	7.9	7.75	9.53	5.21	5.6
		1.38	1.4						

Custom sizes available.

Material	Description	Finish	Description
ST	Carbon Steel	DF	Black dry-film lubricant
SS	300 Series Stainless Steel	DF	Black dry-film lubricant
AL	Aluminum	PLN	Plain



Pre Installation



Post Installation

All Dimensions are in Metric