

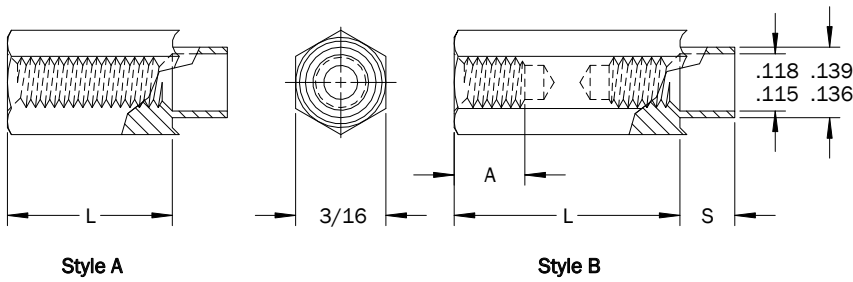
3/16 Hex Swage Standoffs - Binding

PART DESCRIPTION EXAMPLE

HSST3/16 — 256 X .500 — C X .139 — BIND — STL — Z

T
T
T
T
T

Thread Code Length Code Shank Length Code Material Code Finish Code



THREAD

Thread	Thread Code	A Min. (1)
2-56	256	.187
4-40	440	.250

(1) A. Min. may be reduced for shorter standoff lengths.

STYLE

Thread	Material Code			
	STL, AL, BRS		SS	
	Style A	Style B	Style A	Style B
Length				
2-56	Thru 3/4	Over 3/4	Thru 5/8	Over 5/8
4-40	Thru 1	Over 1	Thru 3/4	Over 3/4

SHANK

Panel Thickness	S ±.003	Shank Length Code
1/32	.075	A
1/16	.105	B
3/32	.135	C
1/8	.165	D
3/16	.230	E
1/4	.290	F

INSTALLATION TOOLING

Length	Anvil Part Number	Swage Punch Part Number	Flare Punch Part Number
3/32-3/16	TL1413	TL1406	TL1289
7/32-7/16	TL1414	TL1406	TL1289
15/32-11/16	TL1415	TL1406	TL1289
23/32-2	TL1416	TL1406	TL1289

All dimensions in inches.
Custom sizes, materials, and finishes available

3/16 Hex Swage Standoffs - Binding

LENGTH

Length	L (Length Code) ±.005
3/32	.094
1/8	.125
5/32	.156
3/16	.187
7/32	.219
1/4	.250
9/32	.281
5/16	.312
11/32	.344
3/8	.375
13/32	.406
7/16	.437
15/32	.469
1/2	.500
17/32	.531
9/16	.562
19/32	.594
5/8	.625
21/32	.656
11/16	.687
23/32	.719
3/4	.750
25/32	.781

Length	L (Length Code) ±.005
13/16	.812
27/32	.844
7/8	.875
29/32	.906
15/16	.937
31/32	.969
1	1.000
1-1/16	1.063
1-1/8	1.125
1-3/16	1.187
1-1/4	1.250
1-5/16	1.312
1-3/8	1.375
1-7/16	1.437
1-1/2	1.500
1-9/16	1.562
1-5/8	1.625
1-11/16	1.687
1-3/4	1.750
1-13/16	1.812
1-7/8	1.875
1-15/16	1.937
2	2.000

MATERIAL

Material Code	Material Description
STL	Carbon Steel
SS	Stainless Steel
AL	Aluminum
BRS	Brass

FINISH

Finish Code	Finish Description
Z	Zinc with Clear Chromate
Z-BLK	Zinc with Black Chromate
Z-YEL	Zinc with Yellow Chromate
NI	Electroplated Bright Nickel
BLK-OX	Black Oxide
CF	Clear Chemical Film
CF-GOLD	Gold Chemical Film
P	Passivated
PLN	Plain
TIN	Electroplated Bright Tin
TIN-MATTE	Electroplated Matte Tin

HSST 3/16 Hex Swage Standoffs - Binding

All dimensions in inches.
Custom sizes, materials, and finishes available

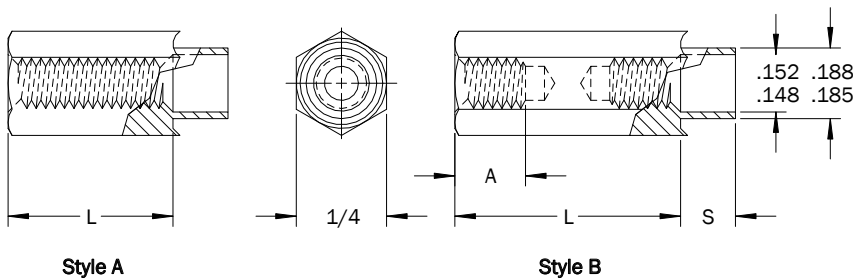
1/4 Hex Swage Standoffs - Binding

PART DESCRIPTION EXAMPLE

HSST1/4 — 440 X 1.000 — C X .188 — BIND — STL — Z

T
T
T
T
T

Thread Code Length Code Shank Length Code Material Code Finish Code



THREAD

Thread	Thread Code	A Min. (1)
2-56	256	.187
4-40	440	.250
6-32	632	.375

(1) A. Min. may be reduced for shorter standoff lengths.

STYLE

Thread	Material Code			
	STL, AL, BRS		SS	
	Style A	Style B	Style A	Style B
Length				
2-56	Thru 3/4	Over 3/4	Thru 5/8	Over 5/8
4-40	Thru 1	Over 1	Thru 3/4	Over 3/4
6-32	Thru 1	Over 1	Thru 1	Over 1

SHANK

Panel Thickness	S ±.003	Shank Length Code
1/32	.075	A
1/16	.105	B
3/32	.135	C
1/8	.165	D
3/16	.230	E
1/4	.290	F

INSTALLATION TOOLING

Length	Anvil Part Number	Swage Punch Part Number	Flare Punch Part Number
3/32-3/16	TL1417	TL1197	TL1289
7/32-7/16	TL1418	TL1197	TL1289
15/32-11/16	TL1419	TL1197	TL1289
23/32-2	TL1420	TL1197	TL1289

All dimensions in inches.
Custom sizes, materials, and finishes available

1/4 Hex Swage Standoffs - Binding

LENGTH

Length	L (Length Code) ±.005
3/32	.094
1/8	.125
5/32	.156
3/16	.187
7/32	.219
1/4	.250
9/32	.281
5/16	.312
11/32	.344
3/8	.375
13/32	.406
7/16	.437
15/32	.469
1/2	.500
17/32	.531
9/16	.562
19/32	.594
5/8	.625
21/32	.656
11/16	.687
23/32	.719
3/4	.750
25/32	.781

Length	L (Length Code) ±.005
13/16	.812
27/32	.844
7/8	.875
29/32	.906
15/16	.937
31/32	.969
1	1.000
1-1/16	1.063
1-1/8	1.125
1-3/16	1.187
1-1/4	1.250
1-5/16	1.312
1-3/8	1.375
1-7/16	1.437
1-1/2	1.500
1-9/16	1.562
1-5/8	1.625
1-11/16	1.687
1-3/4	1.750
1-13/16	1.812
1-7/8	1.875
1-15/16	1.937
2	2.000

MATERIAL

Material Code	Material Description
STL	Carbon Steel
SS	Stainless Steel
AL	Aluminum
BRS	Brass

FINISH

Finish Code	Finish Description
Z	Zinc with Clear Chromate
Z-BLK	Zinc with Black Chromate
Z-YEL	Zinc with Yellow Chromate
NI	Electroplated Bright Nickel
BLK-OX	Black Oxide
CF	Clear Chemical Film
CF-GOLD	Gold Chemical Film
P	Passivated
PLN	Plain
TIN	Electroplated Bright Tin
TIN-MATTE	Electroplated Matte Tin

All dimensions in inches.
Custom sizes, materials, and finishes available

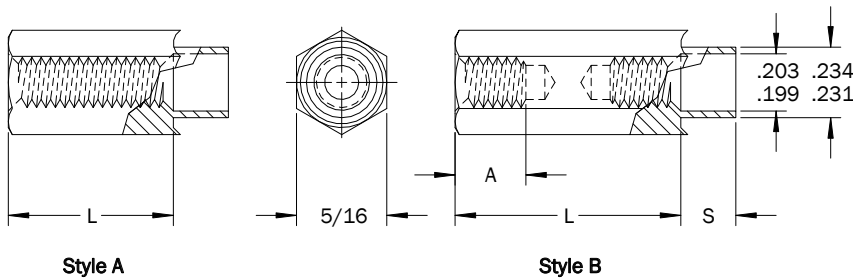
5/16 Hex Swage Standoffs - Binding

PART DESCRIPTION EXAMPLE

HSST5/16 — 832 X 1.000 — C X .234 — BIND — STL — Z

T
T
T
T
T

Thread Code Length Code Shank Length Code Material Code Finish Code



THREAD

Thread	Thread Code	A Min. (1)
4-40	440	.250
6-32	632	.375
8-32	832	.437
10-32	1032	.500

(1) A. Min. may be reduced for shorter standoff lengths.

STYLE

Thread	Material Code			
	STL, AL, BRS		SS	
	Style A	Style B	Style A	Style B
Length				
4-40	Thru 1	Over 1	Thru 3/4	Over 3/4
6-32	Thru 1	Over 1	Thru 1	Over 1
8-32	Thru 1	Over 1	Thru 1	Over 1
10-32	Thru 1-1/8	Over 1-1/8	Thru 1	Over 1

SHANK

Panel Thickness	S ±.003	Shank Length Code
1/32	.075	A
1/16	.105	B
3/32	.135	C
1/8	.165	D
3/16	.230	E
1/4	.290	F

INSTALLATION TOOLING

Length	Anvil Part Number	Swage Punch Part Number	Flare Punch Part Number
3/32-3/16	TL1421	TL1285	TL1289
7/32-7/16	TL1422	TL1285	TL1289
15/32-11/16	TL1423	TL1285	TL1289
23/32-2	TL1424	TL1285	TL1289

All dimensions in inches.
Custom sizes, materials, and finishes available

5/16 Hex Swage Standoffs - Binding

LENGTH

Length	L (Length Code) ±.005
3/32	.094
1/8	.125
5/32	.156
3/16	.187
7/32	.219
1/4	.250
9/32	.281
5/16	.312
11/32	.344
3/8	.375
13/32	.406
7/16	.437
15/32	.469
1/2	.500
17/32	.531
9/16	.562
19/32	.594
5/8	.625
21/32	.656
11/16	.687
23/32	.719
3/4	.750
25/32	.781

Length	L (Length Code) ±.005
13/16	.812
27/32	.844
7/8	.875
29/32	.906
15/16	.937
31/32	.969
1	1.000
1-1/16	1.063
1-1/8	1.125
1-3/16	1.187
1-1/4	1.250
1-5/16	1.312
1-3/8	1.375
1-7/16	1.437
1-1/2	1.500
1-9/16	1.562
1-5/8	1.625
1-11/16	1.687
1-3/4	1.750
1-13/16	1.812
1-7/8	1.875
1-15/16	1.937
2	2.000

MATERIAL

Material Code	Material Description
STL	Carbon Steel
SS	Stainless Steel
AL	Aluminum
BRS	Brass

FINISH

Finish Code	Finish Description
Z	Zinc with Clear Chromate
Z-BLK	Zinc with Black Chromate
Z-YEL	Zinc with Yellow Chromate
NI	Electroplated Bright Nickel
BLK-OX	Black Oxide
CF	Clear Chemical Film
CF-GOLD	Gold Chemical Film
P	Passivated
PLN	Plain
TIN	Electroplated Bright Tin
TIN-MATTE	Electroplated Matte Tin

HSST 5/16 Hex Swage Standoffs - Binding

All dimensions in inches.
Custom sizes, materials, and finishes available

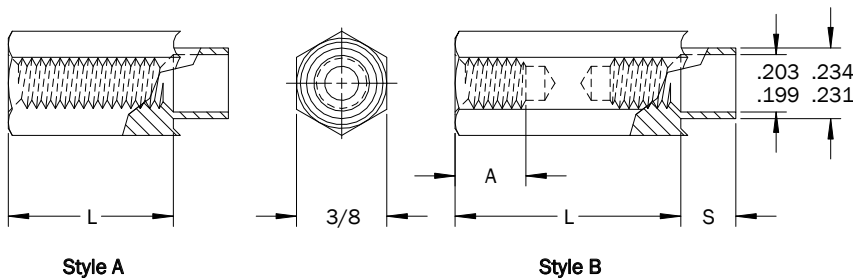
3/8 Hex Swage Standoffs - Binding

PART DESCRIPTION EXAMPLE

HSST3/8 — 832 X 1.000 — C X .234 — BIND — STL — Z

T
T
T
T
T

Thread Code Length Code Shank Length Code Material Code Finish Code



THREAD

Thread	Thread Code	A Min. (1)
4-40	440	.250
6-32	632	.375
8-32	832	.437
10-32	1032	.500

(1) A. Min. may be reduced for shorter standoff lengths.

STYLE

Thread	Material Code			
	STL, AL, BRS		SS	
	Style A	Style B	Style A	Style B
Length				
4-40	Thru 1	Over 1	Thru 3/4	Over 3/4
6-32	Thru 1	Over 1	Thru 1	Over 1
8-32	Thru 1	Over 1	Thru 1	Over 1
10-32	Thru 1-1/8	Over 1-1/8	Thru 1	Over 1

SHANK

Panel Thickness	S ±.003	Shank Length Code
1/32	.075	A
1/16	.105	B
3/32	.135	C
1/8	.165	D
3/16	.230	E
1/4	.290	F

INSTALLATION TOOLING

Length	Anvil Part Number	Swage Punch Part Number	Flare Punch Part Number
3/32-3/16	TL1425	TL1285	TL1289
7/32-7/16	TL1426	TL1285	TL1289
15/32-11/16	TL1427	TL1285	TL1289
23/32-2	TL1428	TL1285	TL1289

All dimensions in inches.
Custom sizes, materials, and finishes available

HSST 3/8 Hex Swage Standoffs - Binding

3/8 Hex Swage Standoffs - Binding

LENGTH

Length	L (Length Code) ±.005
3/32	.094
1/8	.125
5/32	.156
3/16	.187
7/32	.219
1/4	.250
9/32	.281
5/16	.312
11/32	.344
3/8	.375
13/32	.406
7/16	.437
15/32	.469
1/2	.500
17/32	.531
9/16	.562
19/32	.594
5/8	.625
21/32	.656
11/16	.687
23/32	.719
3/4	.750
25/32	.781

Length	L (Length Code) ±.005
13/16	.812
27/32	.844
7/8	.875
29/32	.906
15/16	.937
31/32	.969
1	1.000
1-1/16	1.063
1-1/8	1.125
1-3/16	1.187
1-1/4	1.250
1-5/16	1.312
1-3/8	1.375
1-7/16	1.437
1-1/2	1.500
1-9/16	1.562
1-5/8	1.625
1-11/16	1.687
1-3/4	1.750
1-13/16	1.812
1-7/8	1.875
1-15/16	1.937
2	2.000

MATERIAL

Material Code	Material Description
STL	Carbon Steel
SS	Stainless Steel
AL	Aluminum
BRS	Brass

FINISH

Finish Code	Finish Description
Z	Zinc with Clear Chromate
Z-BLK	Zinc with Black Chromate
Z-YEL	Zinc with Yellow Chromate
NI	Electroplated Bright Nickel
BLK-OX	Black Oxide
CF	Clear Chemical Film
CF-GOLD	Gold Chemical Film
P	Passivated
PLN	Plain
TIN	Electroplated Bright Tin
TIN-MATTE	Electroplated Matte Tin

All dimensions in inches.
Custom sizes, materials, and finishes available