



Male Thread Guide Pins

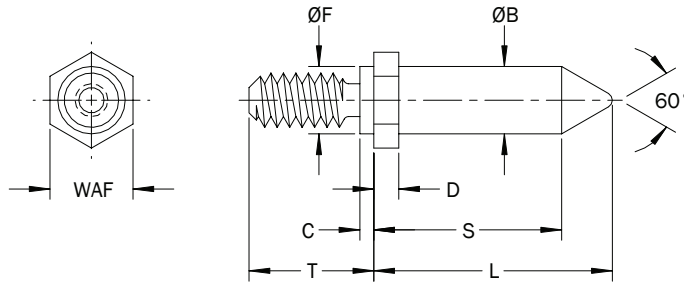
FEATURES

- Precisely aligns stacked and/or mating panels and chasses.
- Male thread design requires no special installation tools.
- Wide range of thread sizes, pin diameters and lengths accommodates most alignment requirements. Custom sizes available by request.
- See Pencom GR guide pin nuts for a complete alignment solution.
- Choice of RoHS compliant materials and finishes.



PART DESCRIPTION EXAMPLE

GMST — M3 — 12 — Z
 T T T T
 Material Code Size Code Length Code Finish Code



GENERAL

All dimensions in inches

INCH	Size Code	Thread	Sheet		ØB +0.000 -0.003	C Max.	D Nom.	ØF +0.000 -0.003	T +0.000 -0.010	WAF Nom.
			Minimum Thickness	Hole Size +0.003 -0.000						
	256	2-56	.030	.119	.118	.028	.050	.118	.250	.156
	440	4-40	.030	.158	.157	.028	.050	.157	.250	.187
	632	6-32	.030	.197	.196	.028	.050	.196	.281	.219
	832	8-32	.030	.236	.235	.028	.050	.235	.312	.250

All dimensions in millimeters

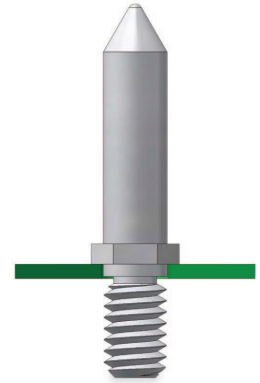
METRIC	Size Code	Thread	Sheet		ØB +0.00 -0.08	C Max.	D Nom.	ØF +0.00 -0.08	T +0.00 -0.25	WAF Nom.
			Minimum Thickness	Hole Size +0.08 -0.00						
	M3	M3 x 0.5	0.76	3.02	3.00	0.71	1.27	3.00	6.35	3.97
	M4	M4 x 0.7	0.76	4.01	3.99	0.71	1.27	3.99	6.35	4.76
	M5	M5 x 0.8	0.76	5.00	4.98	0.71	1.27	4.98	7.14	5.57
	M6	M6 x 1.0	0.76	5.99	5.97	0.71	1.27	5.97	7.92	6.35

GM Male Thread Guide Pins

LENGTH-60° POINT

All dimensions in inches

INCH	Size Code	L (Length Code) +.000/-0.010						
		.250	.312	.375	.437	.562	.750	1.000
		S Ref.						
256		.177	.239	.302	.364	.489	.677	.927
440		.144	.206	.269	.331	.456	.644	.894
632		.108	.170	.233	.295	.420	.608	.858
832		—	.137	.200	.262	.387	.575	.825



Integral pilot shoulder accurately positions guide pin in the sheet hole.

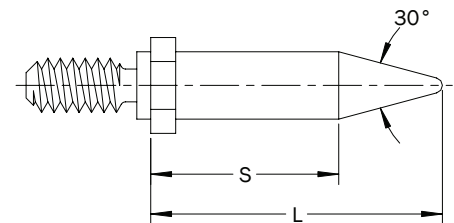
All dimensions in millimeters

METRIC	Size Code	L (Length Code) +0.00/-0.25						
		6	8	10	12	15	20	25
		S Ref.						
M3		4.15	6.15	8.15	10.15	13.15	18.15	23.15
M4		3.30	5.30	7.30	9.30	12.30	17.30	22.30
M5		2.40	4.40	6.40	8.40	11.40	16.40	21.40
M6		—	3.55	5.55	7.55	10.55	15.55	20.55



GM Guide Pins are offered with a 30° point angle to improve mating hole engagement. To specify, insert **30DEG** at the end of the part description.

Ex: GMST-M3-12-Z-**30DEG**



LENGTH-30° POINT

All dimensions in inches

INCH	Size Code	L (Length Code) +.000/-0.010						
		.312	.375	.437	.562	.750	1.000	1.187
		S Ref.						
256		.135	.198	.260	.385	.573	.823	1.010
440		—	.139	.201	.326	.514	.764	.951
632		—	—	.142	.267	.455	.705	.892
832		—	—	—	.208	.396	.646	.833

GM Male Thread Guide Pins

LENGTH-30° POINT (CONTINUED)

All dimensions in millimeters

METRIC	Size Code	L (Length Code) +0.00/-0.25						
		8	10	12	15	20	25	30
	S Ref.							
M3		3.50	5.50	7.50	10.50	15.50	20.50	25.50
M4		—	4.00	6.00	9.00	14.00	19.00	24.00
M5		—	—	4.50	7.50	12.50	17.50	22.50
M6		—	—	—	6.00	11.00	16.00	21.00

MATERIAL & FINISH

Material Code	Material Description	Finish Code	Finish Description
ST	Carbon Steel	Z	Zinc (SC1) with Type III Clear Chromate per ASTM B 633
SS	300-Series Stainless Steel	P	Passivate and/or test per ASTM A 967

TECHNICAL DATA

INCH	Size Code	Thread	Installation Torque ¹ (in-lbs)	Minimum Thread Engagement ¹
	256	2-56	1.5-2.0	.086
	440	4-40	3.2-4.3	.112
	632	6-32	5.8-7.9	.138
	832	8-32	11-15	.164

(1) Installation torques are for zinc-plated carbon steel nuts used with zinc-plated carbon steel guide pins and for reference only. Pencom recommends testing in the application.

METRIC	Size Code	Thread	Installation Torque ¹ (N-m)	Minimum Thread Engagement ¹
	M3	M3 x 0.5	0.32-0.43	3.0
	M4	M4 x 0.7	0.8-1.1	4.0
	M5	M5 x 0.8	1.4-1.9	5.0
	M6	M6 x 1.0	2.8-3.8	6.0

(1) Installation torques are for zinc-plated carbon steel nuts used with zinc-plated carbon steel guide pins and for reference only. Pencom recommends testing in the application.



A nylon thread locking element can be added to the screw threads to prevent loosening due to vibration. To specify, insert **PATCH** at the end of the part description. Other locking elements available by request.

Ex: GMST-M3-12-Z-PATCH

