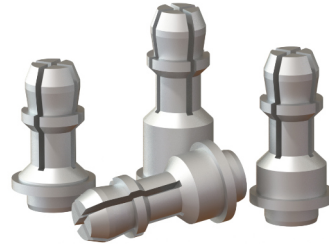


# Surface-Mount Spring-Top Standoffs

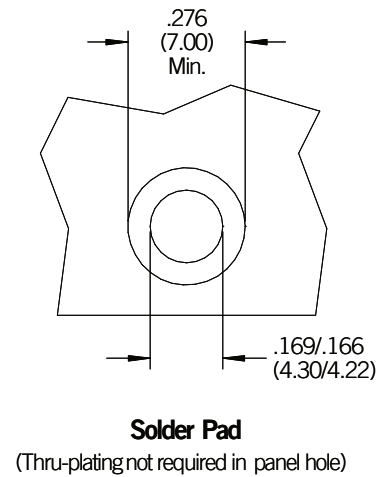
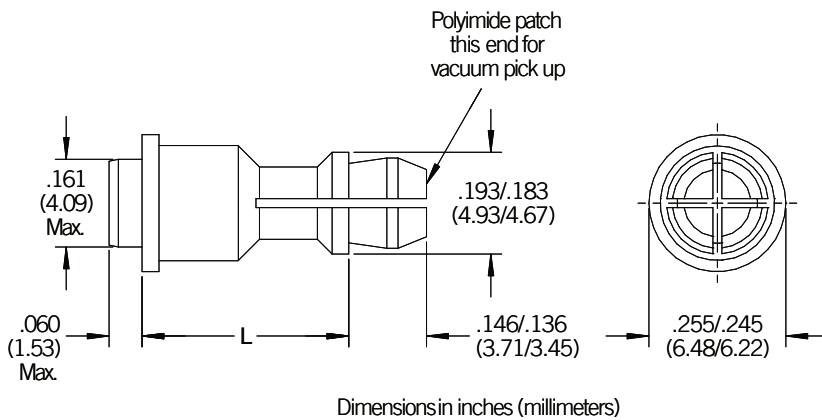
## FEATURES

- Standoffs installed on p.c. boards at the same time and method as other surface-mount technology (SMT) components. Their spring action holds panels in place without threaded hardware.
- Reduce secondary handling of p.c. boards that may lead to potential damage.
- Packaged on tape and reel consistent with standard automated SMT installation equipment.
- Custom lengths available by request.



## PART DESCRIPTION EXAMPLE

TGUST - .250 - TIN - MATTE  
T  
 Length



## MATERIAL AND FINISH

Carbon Steel/Electroplated Matte Tin per ASTM B545, Class A with Clear Preservative Coating, Annealed.

TGU Surface-Mount Spring-Top Standoffs

## GENERAL

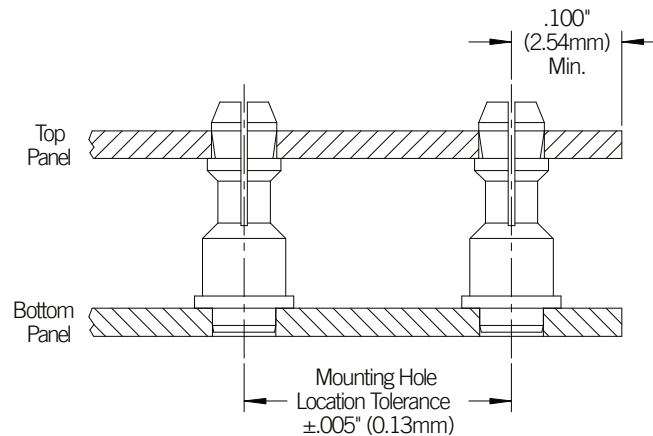
All dimensions in inches

INCH	Top Panel			Bottom Panel		
	Thickness	Material	Hole Diameter <sup>1</sup>	Minimum Thickness	Material	Hole Diameter
	.040-.070	Any	.156-.159	.060	P.C. Board	.166-.169

All dimensions in millimeters

METRIC	Top Panel			Bottom Panel		
	Thickness	Material	Hole Diameter <sup>1</sup>	Minimum Thickness	Material	Hole Diameter
	1.00-1.80	Any	4.00-4.08	1.53	P.C. Board	4.22-4.30

(1) Hole diameter may be increased to reduce panel removal force.



## LENGTH

All dimensions in inches

INCH	L (Length) ± .005		
	.250	.312	.375

All dimensions in millimeters

METRIC	L (Length) ± 0.13		
	6	8	10

## REEL DATA

All dimensions in inches

INCH	Length		
	.250	.312	.375
	Parts per Reel/Pitch		
	280/.630	250/.630	220/.630

All dimensions in millimeters

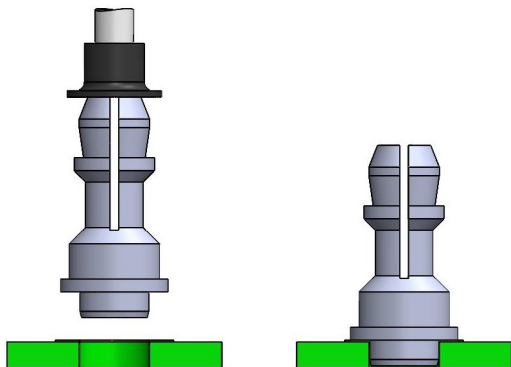
METRIC	Length		
	6	8	10
	Parts per Reel/Pitch		
	300/16	250/16	200/16

(1) Parts packaged on .945" (24mm) wide tape on 13" (330mm) recyclable reels conforming to EIA-481.

(2) Parts available in bulk without polyimide patch by special request.

TGU Surface-Mount Spring-Top Standoffs

## INSTALLATION



Apply solder paste to p.c. board pad. Place fastener by gripping end with polyimide patch. Solder fastener in place using surface-mount technology (SMT) practices.



**TGU Surface-Mount Spring-Top Standoffs**