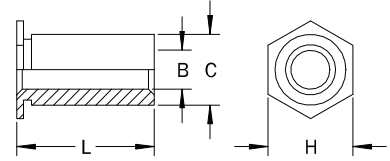




Self-Clinching, Thru-Hole

FEATURES

- Self-clinching unthreaded standoffs that precisely space mating panels.



PART DESCRIPTION EXAMPLE

TNST — 4116 — .250 — Z
 T T T T
 Material Code Thread Code Length Finish Code

All dimensions in inches

INCH	B Thru-Hole Diameter +.004 -.003	Thru-Hole Code	Sheet			C +.000 -.005	H Nom.
			Min. Thickness	Hole Size +.003 -.000	Min. Distance Hole Center to Edge		
.116	.116	4116	.040	.166	.23	.165	.187
		6116	.040	.213	.27	.212	.250
.143	.143	6143	.040	.213	.27	.212	.250
		8143	.050	.281	.31	.280	.312
.169	.169	8169	.050	.281	.31	.280	.312
.194	.194	8194	.050	.281	.31	.280	.312

(1) Custom sizes available.

All dimensions in inches

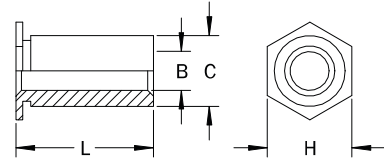
INCH	L (Length) +.002/-.005										
	.125	.187	.250	.312	.375	.437	.500	.562	.625	.687	.750

Material Code	Material Description	Finish Code	Finish Description	For Use in Sheet Hardness			
				HRB 50 Max.	HRB 70 Max.	HRB 80 Max.	HRB 88 Max.
ST	Heat Treated Carbon Steel	Z	Zinc (SC1) with Type III Clear Chromate per ASTM B 633			•	
SS	300-Series Stainless Steel	P	Passivated and/or tested per ASTM A 967		•		
S4	Heat Treated 400-Series Stainless Steel	P	Passivated and/or tested per ASTM A 967				•
AL	Aluminum	PLN	Plain	•			

Self-Clinching, Thru-Hole

FEATURES

- Self-clinching unthreaded standoffs that precisely space mating panels.



PART DESCRIPTION EXAMPLE

TNST — 43.1 — 14.00 — Z
T **T** **T** **T**
 Material Code Thread Code Length Finish Code

All dimensions in millimeters

METRIC	B Thru Hole Diameter +0.1 -0.08	Thru-Hole Code	Sheet			C +0.00 -0.13	H Nom.
			Min. Thickness	Hole Size +0.08 -0.00	Min. Distance Hole Center to Edge		
3.1	43.1	63.1	1.02	4.22	6	4.2	4.8
			1.02	5.41	6.8	5.39	6.4
3.6	63.6	83.6	1.02	5.41	6.8	5.39	6.4
			1.27	7.14	8	7.12	7.9
4.1	84.1		1.27	7.14	8	7.12	7.9
5.1	85.1		1.27	7.14	8	7.12	7.9

(1) Custom sizes available.

All dimensions in millimeters

METRIC	L (Length) +0.05/-0.13									
	3.00	4.00	6.00	8.00	10.00	12.00	14.00	16.00	18.00	20.00

Material Code	Material Description	Finish Code	Finish Description	For Use in Sheet Hardness			
				HRB 50 Max.	HRB 70 Max.	HRB 80 Max.	HRB 88 Max.
ST	Heat Treated Carbon Steel	Z	Zinc (SC1) with Type III Clear Chromate per ASTM B 633			•	
SS	300-Series Stainless Steel	P	Passivated and/or tested per ASTM A 967		•		
S4	Heat Treated 400-Series Stainless Steel	P	Passivated and/or tested per ASTM A 967				•
AL	Aluminum	PLN	Plain	•			

Self-Clinching Standoffs