

# TK - Standoff

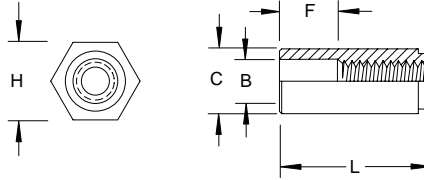
## Self-Clinching

Inch

Sample Part Number

TKST - 440 - .250 - Z

Series/ Thread Length Finish  
Material Code

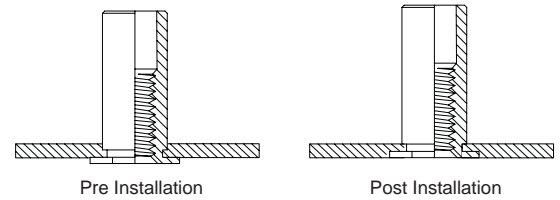


Thread	Thread Code	Sheet Thickness MIN	Hole Size in Sheet +.003/-0.000	B Counter Bore Diameter ±.005	C +.000/-0.005	H NOM	Dist. Hole C/L to Edge MIN
4 - 40	440	.040	.166	.125	.165	.187	.23
	6440	.040	.213	.125	.212	.250	.27
6 - 32	632	.040	.213	.156	.212	.250	.27
	8632	.050	.281	.156	.280	.312	.31
8 - 32	832	.050	.281	.188	.280	.312	.31
10 - 32	1032	.050	.281	.203	.280	.312	.31

Material	Description	Finish	Description
ST	Carbon Steel	Z	Zinc Clear
SS	300 Series Stainless Steel	P	Passivate
S4	400 Series Stainless Steel	P	Passivate
AL	Aluminum	PLN	Plain

Custom sizes available.

(F) Dimensions ±.010	NONE				.187				.312				.437			
(L) Length +.002/-0.005	.125	.187	.250	.312	.375	.437	.500	.562	.625	.687	.750	.812	.875	.937	1.00	1.062



All Dimensions are in Inches

# TK - Standoff

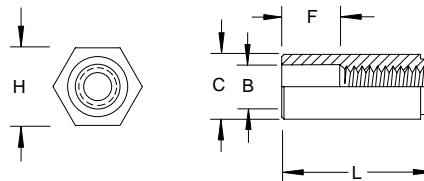
## Self-Clinching

Metric

Sample Part Number

TKST - M3 - 20 - Z

Series/ Thread Length Finish  
Material Code

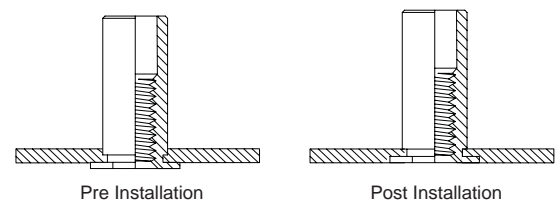


Thread	Thread Code	Sheet Thickness MIN	Hole Size in Sheet +0.08	B Counter Bore Diameter ±0.13	C -0.13	H NOM	Dist. Hole C/L to Edge MIN
M3 x 0.5	M3	1.02	4.22	3.2	4.2	4.8	6
	3.5M3	1.02	5.41	3.2	5.39	6.4	6.8
M3.5 x 0.6	M3.5	1.02	5.41	3.9	5.39	6.4	6.8
M4 x 0.7	M4	1.27	7.14	4.8	7.12	7.9	8
M5 x 0.8	M5	1.27	7.14	5.35	7.12	7.9	8

Material	Description	Finish	Description
ST	Carbon Steel	Z	Zinc Clear
SS	300 Series Stainless Steel	P	Passivate
S4	400 Series Stainless Steel	P	Passivate
AL	Aluminum	PLN	Plain

Custom sizes available.

(F) Dimensions (mm) ±0.25	NONE				4				8				11			
(L) Length (mm) +0.05/-0.13	3	4	6	8	10	12	14	16	18	20	22	25				



All Dimensions are in Metric