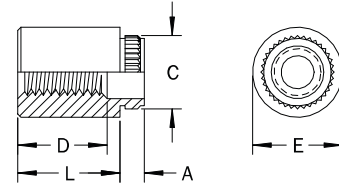


Broaching

FEATURES

- Install easily by simply pressing into p.c. boards, aluminum, castings and plastics.
- Axial broaching grooves cut into mating sheet holes and create an interference fit that resists rotation.
- Non-plated holes are recommended for p.c. boards.



PART DESCRIPTION EXAMPLE

TCST — 440 — .250 — Z
T **T** **T** **T**
 Material Thread Length Finish
 Code Code

All dimensions in inches

INCH	Thread	Thread Code	Sheet			A Max.	C ±.003	E ±.005
			Min. Thickness	Hole Size +.003 - .000	Min. Distance Hole Center to Edge			
	4-40	440	.060	.166	.17	.060	.184	.219
	6-32	632	.060	.213	.22	.060	.231	.281

(1) Custom sizes available.

All dimensions in inches

INCH	Thread	L (Length) ±.005							
		4-40	.125	.250	.375	.500	.625	.750	—
	6-32	.125	.250	.375	.500	.625	.750	.875	1.000
	"D" Min. Thread Length	Full			.375 ±.016		.375 Blind (1)		

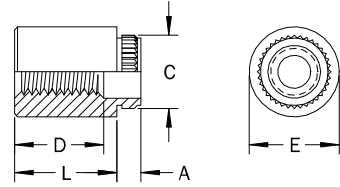
(1) Standoff is blind at the shank end with .375" minimum thread length from the end of head.

Material Code	Material Description	Finish Code	Finish Description	For Use in Sheet Hardness			
				HRB 50 Max.	HRB 60 Max.	HRB 65 Max.	HRB 70 Max.
ST	Heat Treated Carbon Steel	Z	Zinc (SC1) with Type III Clear Chromate per ASTM B 633		•		
SS	300-Series Stainless Steel	P	Passivated and/or tested per ASTM A 967				•
AL	Aluminum	PLN	Plain	•			
BRS	Brass	TIN	Tin			•	

Broaching

FEATURES

- Install easily by simply pressing into p.c. boards, aluminum, castings and plastics.
- Axial broaching grooves cut into mating sheet holes and create an interference fit that resists rotation.
- Non-plated holes are recommended for p.c. boards.



PART DESCRIPTION EXAMPLE

TCST — M3 — 16.00 — Z
 T — T — T — T
 Material Code Thread Code Length Finish Code

All dimensions in millimeters

METRIC	Thread	Thread Code	Sheet			A Max.	C ±0.08	E ±0.13
			Min. Thickness	Hole Size +0.08 -0.00	Min. Distance Hole Center to Edge			
	M3 x 0.5	M3	1.53	4.22	4.4	1.53	4.68	5.56

(1) Custom sizes available.

All dimensions in millimeters

METRIC	Thread	L (Length) ±0.13								
		M3 x 0.5	3.00	4.00	6.00	8.00	10.00	12.00	14.00	16.00
	"D" Min. Thread Length	Full					9.5 ±0.4			

(1) Standoff is blind at the shank end with .375" minimum thread length from the end of head.

Material Code	Material Description	Finish Code	Finish Description	For Use in Sheet Hardness			
				HRB 50 Max.	HRB 60 Max.	HRB 65 Max.	HRB 70 Max.
ST	Heat Treated Carbon Steel	Z	Zinc (SC1) with Type III Clear Chromate per ASTM B 633		•		
SS	300-Series Stainless Steel	P	Passivated and/or tested per ASTM A 967				•
AL	Aluminum	PLN	Plain	•			
BRS	Brass	TIN	Tin			•	