

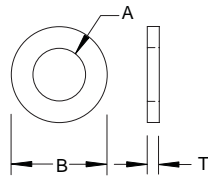
Washer

Plain Washer - B Narrow, Regular, Wide
Inch

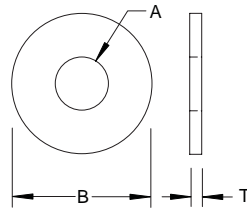
Sample Part Number

#6 B - NAW - FL - WA - STL - Z

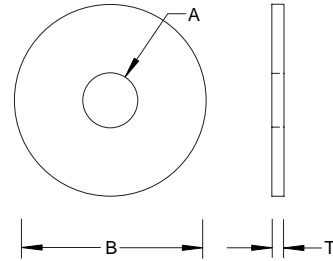
Size Code Type Code Series Material Finish



Narrow



Regular



Wide

Size Code	Nominal Washer Size	Type	Type Code	T Thickness		A Inside Diameter		B Outside Diameter	
				Basic	MAX / MIN	Basic	+ / -	Basic	+ / -
#0	0 - .060	Narrow	NAR	.025	.028 / .022	.068	.000 / .005	.125	.000 / .005
		Regular	REG	.025	.028 / .022	.068	.000 / .005	.188	.000 / .005
		Wide	WIDE	.025	.028 / .022	.068	.000 / .005	.250	.000 / .005
#1	1 - .073	Narrow	NAR	.025	.028 / .022	.084	.000 / .005	.156	.000 / .005
		Regular	REG	.025	.028 / .022	.084	.000 / .005	.219	.000 / .005
		Wide	WIDE	.032	.036 / .028	.084	.000 / .005	.281	.000 / .005
#2	2 - .086	Narrow	NAR	.025	.028 / .022	.094	.000 / .005	.188	.000 / .005
		Regular	REG	.032	.036 / .028	.094	.000 / .005	.250	.000 / .005
		Wide	WIDE	.032	.036 / .028	.094	.000 / .005	.344	.000 / .005
#3	3 - .099	Narrow	NAR	.025	.028 / .022	.109	.000 / .005	.219	.000 / .005
		Regular	REG	.032	.036 / .028	.109	.000 / .005	.312	.000 / .005
		Wide	WIDE	.040	.045 / .036	.109	.008 / .005	.406	.008 / .005
#4	4 - .112	Narrow	NAR	.032	.036 / .028	.125	.000 / .005	.250	.000 / .005
		Regular	REG	.040	.045 / .036	.125	.008 / .005	.375	.008 / .005
		Wide	WIDE	.040	.045 / .036	.125	.008 / .005	.438	.008 / .005
#5	5 - 1.125	Narrow	NAR	.032	.036 / .028	.141	.000 / .005	.281	.000 / .005
		Regular	REG	.040	.045 / .036	.141	.008 / .005	.406	.008 / .005
		Wide	WIDE	.040	.045 / .036	.141	.008 / .005	.500	.008 / .005
#6	6 - .138	Narrow	NAR	.040	.036 / .028	.156	.000 / .005	.312	.000 / .005
		Regular	REG	.040	.045 / .036	.156	.008 / .005	.438	.008 / .005
		Wide	WIDE	.063	.045 / .036	.156	.008 / .005	.562	.008 / .005
#8	8 - .164	Narrow	NAR	.040	.045 / .036	.188	.008 / .005	.375	.008 / .005
		Regular	REG	.040	.045 / .036	.188	.008 / .005	.500	.008 / .005
		Wide	WIDE	.063	.071 / .056	.188	.008 / .005	.625	.015 / .005
#10	10 - .190	Narrow	NAR	.040	.045 / .036	.203	.008 / .005	.406	.008 / .005
		Regular	REG	.063	.045 / .036	.203	.008 / .005	.562	.008 / .005
		Wide	WIDE	.063	.071 / .056	.203	.008 / .005	.734	.015 / .007
#12	12 - .216	Narrow	NAR	.063	.045 / .036	.234	.008 / .005	.438	.008 / .005
		Regular	REG	.063	.071 / .056	.234	.008 / .005	.625	.015 / .005
		Wide	WIDE	.063	.071 / .056	.234	.008 / .005	.875	.015 / .007
1/4	1/4 - .250	Narrow	NAR	.063	.071 / .056	.281	.015 / .005	.500	.008 / .005
		Regular	REG	.063	.071 / .056	.281	.015 / .005	.734	.015 / .007
		Wide	WIDE	.063	.071 / .056	.281	.015 / .005	1.000	.015 / .007
5/16	5/16 - .312	Narrow	NAR	.063	.071 / .056	.344	.015 / .005	.625	.015 / .005
		Regular	REG	.063	.071 / .056	.344	.015 / .005	.875	.015 / .007
		Wide	WIDE	.100	.071 / .056	.344	.015 / .005	1.125	.015 / .007
3/8	3/8 - .375	Narrow	NAR	.063	.071 / .056	.406	.015 / .005	.734	.015 / .007
		Regular	REG	.063	.071 / .056	.406	.015 / .005	1.000	.015 / .007
		Wide	WIDE	.100	.112 / .090	.406	.015 / .005	1.250	.030 / .007
7/16	7/16 - .438	Narrow	NAR	.063	.071 / .056	.469	.015 / .005	.875	.015 / .007
		Regular	REG	.063	.071 / .056	.469	.015 / .005	1.125	.015 / .007
		Wide	WIDE	.063	.112 / .090	.469	.015 / .005	1.469	.030 / .007
1/2	1/2 - .500	Narrow	NAR	.063	.071 / .056	.531	.015 / .005	1.000	.015 / .007
		Regular	REG	.100	.112 / .090	.531	.015 / .005	1.250	.030 / .007
		Wide	WIDE	.100	.112 / .090	.531	.015 / .005	1.750	.030 / .007
6/16	6/16 - .562	Narrow	NAR	.063	.071 / .056	.094	.015 / .005	1.125	.015 / .007
		Regular	REG	.100	.112 / .090	.094	.015 / .005	1.469	.030 / .007
		Wide	WIDE	.100	.112 / .090	.094	.015 / .005	2.000	.030 / .007
5/8	5/8 - .625	Narrow	NAR	.100	.112 / .090	.656	.030 / .007	1.250	.030 / .007
		Regular	REG	.100	.112 / .090	.656	.030 / .007	1.750	.030 / .007
		Wide	WIDE	.160	.174 / .146	.656	.030 / .007	2.250	.030 / .007
3/4	3/4 - .750	Narrow	NAR	.100	.112 / .090	.812	.030 / .007	1.375	.030 / .007
		Regular	REG	.100	.112 / .090	.812	.030 / .007	2.000	.030 / .007
		Wide	WIDE	.160	.174 / .146	.812	.030 / .007	2.500	.030 / .007

Custom sizes available.

Material	Description
STL	Low Carbon Steel
SS	18 - 8 Stainless Steel

Finish	Description
Z	Zinc Clear

Other finishes available.

Washer

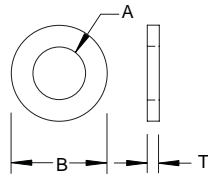
Plain Washer - B, Narrow, Regular, Wide
Metric

Sample Part Number

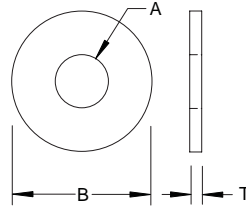
M1.6 NAR - FL - WA - STL - Z - IFI - 2.09 ID / 3.85 OD / 0.70 THK

Nominal Washer Size	Type Code	Series	Material	Finish	Inside Diameter Code	Outside Diameter Code	Thickness Code
M1.6	NAR	FL	WA	STL	Z	IFI	2.09 ID / 3.85 OD / 0.70 THK

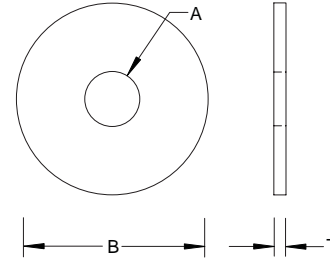
ANSI B18.22M



Narrow



Regular



Wide

Nominal Washer Size	Type	Type Code	T Thickness	Thickness Code	A Inside Diameter	Inside Diameter Code	B Outside Diameter	Outside Diameter Code
1.6	Narrow	NAR	0.70 / 0.50	0.60	2.09 / 1.95	2.02	4.00 / 3.70	3.85
	Regular	REG	0.70 / 0.50	0.60	2.09 / 1.95	2.02	5.00 / 4.70	4.85
	Wide	WIDE	0.90 / 0.60	0.75	2.09 / 1.95	2.02	6.00 / 5.70	5.85
2	Narrow	NAR	0.90 / 0.60	0.75	2.64 / 2.50	2.57	5.00 / 4.70	4.85
	Regular	REG	0.90 / 0.60	0.75	2.64 / 2.50	2.57	6.00 / 5.70	5.85
	Wide	WIDE	0.90 / 0.60	0.75	2.64 / 2.50	2.57	8.00 / 7.64	7.82
2.5	Narrow	NAR	0.90 / 0.60	0.75	3.14 / 3.00	3.07	6.00 / 5.70	5.85
	Regular	REG	0.90 / 0.60	0.75	3.14 / 3.00	3.07	8.00 / 7.64	7.82
	Wide	WIDE	1.20 / 0.80	1.00	3.14 / 3.00	3.07	10.00 / 9.64	9.82
3	Narrow	NAR	0.90 / 0.60	0.75	3.68 / 3.50	3.59	7.00 / 6.64	6.82
	Regular	REG	1.20 / 0.80	1.00	3.68 / 3.50	3.59	10.00 / 9.64	9.82
	Wide	WIDE	1.40 / 1.00	1.20	3.68 / 3.50	3.59	12.00 / 11.57	11.78
3.5	Narrow	NAR	1.20 / 0.80	1.00	4.18 / 4.00	4.09	9.00 / 8.64	8.82
	Regular	REG	1.40 / 1.00	1.20	4.18 / 4.00	4.09	10.00 / 9.64	9.82
	Wide	WIDE	1.75 / 1.20	1.47	4.18 / 4.00	4.09	15.00 / 14.57	14.78
4	Narrow	NAR	1.20 / 0.80	1.00	4.88 / 4.70	4.79	10.00 / 9.64	9.82
	Regular	REG	1.40 / 1.00	1.20	4.88 / 4.70	4.79	12.00 / 11.57	11.78
	Wide	WIDE	2.30 / 1.60	1.95	4.88 / 4.70	4.79	16.00 / 15.57	15.78
5	Narrow	NAR	1.40 / 1.00	1.20	5.78 / 5.50	5.64	11.00 / 10.57	10.78
	Regular	REG	1.75 / 1.20	1.47	5.78 / 5.50	5.64	15.00 / 14.57	14.78
	Wide	WIDE	2.30 / 1.60	1.95	5.78 / 5.50	5.64	20.00 / 19.48	19.47
6	Narrow	NAR	1.75 / 1.20	1.47	6.87 / 6.65	6.67	13.00 / 12.57	12.78
	Regular	REG	1.75 / 1.20	1.47	6.87 / 6.65	6.67	18.80 / 18.37	18.58
	Wide	WIDE	2.30 / 1.60	1.95	6.87 / 6.65	6.67	25.40 / 24.88	25.14
8	Narrow	NAR	2.30 / 1.60	1.95	9.12 / 8.90	9.01	18.80 / 18.37	18.58
	Regular	REG	2.30 / 1.60	1.95	9.12 / 8.90	9.01	25.40 / 24.48	24.93
	Wide	WIDE	2.80 / 2.00	2.40	9.12 / 8.90	9.01	32.00 / 31.38	31.69
10	Narrow	NAR	2.30 / 1.60	1.95	11.12 / 10.85	10.98	20.00 / 19.48	19.74
	Regular	REG	2.80 / 2.00	2.40	11.12 / 10.85	10.98	28.00 / 27.48	27.74
	Wide	WIDE	3.50 / 2.50	3.00	11.12 / 10.85	10.98	39.00 / 38.38	38.69
12	Narrow	NAR	2.80 / 2.00	2.40	13.57 / 13.30	13.43	25.40 / 24.88	25.14
	Regular	REG	3.50 / 2.50	3.00	13.57 / 13.30	13.43	34.00 / 33.38	33.69
	Wide	WIDE	3.50 / 2.50	3.00	13.57 / 13.30	13.43	44.00 / 43.38	43.69
14	Narrow	NAR	2.80 / 2.00	2.40	15.52 / 15.25	15.38	28.00 / 27.48	27.74
	Regular	REG	3.50 / 2.50	3.00	15.52 / 15.25	15.38	39.00 / 38.38	38.69
	Wide	WIDE	4.00 / 3.00	3.75	15.52 / 15.25	15.38	50.00 / 49.38	49.69
16	Narrow	NAR	3.50 / 2.50	3.00	17.52 / 17.25	17.39	32.00 / 31.38	31.69
	Regular	REG	4.00 / 3.00	3.75	17.52 / 17.25	17.39	44.00 / 43.38	43.69
	Wide	WIDE	4.60 / 3.50	4.05	17.52 / 17.25	17.39	56.00 / 54.80	55.40
20	Narrow	NAR	4.00 / 3.00	3.75	22.32 / 21.80	22.06	39.00 / 38.38	38.69
	Regular	REG	4.60 / 3.50	4.05	22.32 / 21.80	22.06	50.00 / 49.38	49.69
	Wide	WIDE	5.10 / 4.00	4.55	22.32 / 21.80	22.06	66.00 / 64.80	65.40

Custom sizes available.

Material	Description
STL	Low Carbon Steel
SS	18 - 8 Stainless Steel

Finish	Description
Z	Zinc Clear

Other finishes available.