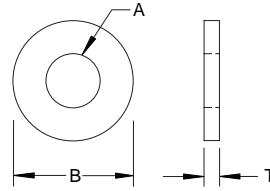


# Washer

Plain Washer - A  
Inch

Sample Part Number

#6 A - NAW - FL - WA - STL - Z  
Size Type Series Material Finish



Nominal Washer Size	Type	Type Code	T Thickness		A Inside Diameter		B Outside Diameter	
			Basic	MAX / MIN	Basic	+ / -	Basic	+ / -
0 - /	-	-	.020	.025 / .016	.078	.000 / .005	.188	.000 / .005
2 - /	-	-	.020	.025 / .016	.094	.000 / .005	.250	.000 / .005
4 - /	-	-	.032	.040 / .025	.125	.008 / .005	.312	.008 / .005
6 - .138	-	-	.049	.065 / .036	.156	.008 / .005	.375	.015 / .005
8 - .164	-	-	.049	.065 / .036	.188	.008 / .005	.438	.015 / .005
10 - .190	-	-	.049	.065 / .036	.219	.008 / .005	.500	.015 / .005
3/16 - .188	-	-	.049	.065 / .036	.250	.015 / .005	.562	.015 / .005
12 - .216	-	-	.065	.080 / .051	.250	.015 / .005	.562	.015 / .005
1/4 - .250	Narrow	NAR	.065	.080 / .051	.281	.015 / .005	.625	.015 / .005
1/4 - .250	Wide	WIDE	.065	.080 / .051	.312	.015 / .005	.734	.015 / .007
5/16 - .312	Narrow	NAR	.065	.080 / .051	.344	.015 / .005	.688	.015 / .007
5/16 - .312	Wide	WIDE	.083	.104 / .064	.375	.015 / .005	.875	.030 / .007
3/8 - .375	Narrow	NAR	.065	.080 / .051	.406	.015 / .005	.812	.015 / .007
3/8 - .375	Wide	WIDE	.083	.104 / .064	.438	.015 / .005	1.000	.030 / .007
7/16 - .438	Narrow	NAR	.065	.080 / .051	.469	.015 / .005	.922	.015 / .007
7/16 - .438	Wide	WIDE	.083	.104 / .064	.500	.015 / .005	1.250	.030 / .007
1/2 - .500	Narrow	NAR	.095	.121 / .074	.531	.015 / .005	1.062	.030 / .007
1/2 - .500	Wide	WIDE	.109	.132 / .086	.562	.015 / .005	1.375	.030 / .007
9/16 - .562	Narrow	NAR	.095	.121 / .074	.594	.015 / .005	1.156	.030 / .007
9/16 - .562	Wide	WIDE	.109	.132 / .086	.625	.015 / .005	1.469	.030 / .007
5/8 - .625	Narrow	NAR	.095	.121 / .074	.656	.030 / .007	1.312	.030 / .007
5/8 - .625	Wide	WIDE	.134	.160 / .108	.688	.030 / .007	1.750	.030 / .007
3/4 - .750	Narrow	NAR	.134	.160 / .108	.812	.030 / .007	1.469	.030 / .007
3/4 - .750	Wide	WIDE	.148	.177 / .122	.812	.030 / .007	2.000	.030 / .007

Custom sizes available.

Material	Description
STL	Low Carbon Steel
SS	18 - 8 Stainless Steel

Finish	Description
Z	Zinc Clear

Other finishes available.

# Washer

## Plain Washer - A

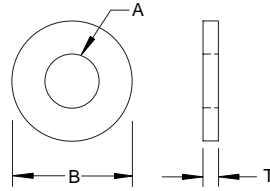
Metric

Sample Part Number

M2.5 - A - FL - WA - STL - Z - DIN - 4.3 ID / 14.5 OD / 0.56 THK

Nominal Washer Size Series Material Finish Inside Diameter Outside Diameter Thickness Code

DIN 128



Nominal Washer Size	T Thickness REF/ Code	A Inside Diameter	Inside Diameter Code	B Outside Diameter
2	0.50	2.4 / 2.1	2.1	4.5
2.5	0.60	2.9 / 2.6	2.6	5.1
3	0.80	3.4 / 3.1	3.1	6.2
4	0.90	4.4 / 4.1	4.1	7.6
5	1.20	5.4 / 5.1	5.1	9.2
6	1.60	6.5 / 6.1	6.1	11.8
8	2.0	8.5 / 8.1	8.1	14.8
10	2.2	10.7 / 10.2	10.2	18.1
12	2.5	12.7 / 12.2	12.2	21.1
16	3.5	17.0 / 16.2	16.2	27.4
20	4	21.2 / 20.2	20.2	33.6
24	5	25.5 / 24.5	24.5	40
30	6	31.7 / 30.5	30.5	48.2
36	6	37.7 / 36.5	36.5	58.2
42	7	43.7 / 42.5	42.5	68.2

Custom sizes available.

Material	Description
STL	Low Carbon Steel
SS	18 - 8 Stainless Steel

Finish	Description
Z	Zinc Clear

Other finishes available.