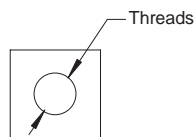
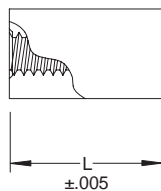


SST - Mechanical Standoff

Square Standoff
Inch

Sample Part Number

SST1/8 x 256 - .125 - STL - Z
Series WAF Thread Length Material Finish



Thread	WAF Width Across Flats					
	1/8	3/16	1/4	5/16	3/8	1/2
2 - 56	Shaded	Shaded	Shaded	Shaded	Shaded	Shaded
4 - 40	Shaded	Shaded	Shaded	Shaded	Shaded	Shaded
6 - 32	Shaded	Shaded	Shaded	Shaded	Shaded	Shaded
8 - 32	Shaded	Shaded	Shaded	Shaded	Shaded	Shaded
10 - 32	Shaded	Shaded	Shaded	Shaded	Shaded	Shaded
12 - 24	Shaded	Shaded	Shaded	Shaded	Shaded	Shaded
1/4 - 20	Shaded	Shaded	Shaded	Shaded	Shaded	Shaded

Custom sizes available.

L Length
.125
.167
.250
.312
.375
.437
.500
.562
.625
.678
.750
.812
.875
.937
1.000
1.125
1.187
1.312
1.376
1.312
1.437
1.500
1.582
1.625
1.687
1.750
1.812
1.875
1.937
2.000

Material	Description
STL	Carbon Steel
SS	300 Series Stainless Steel
AL	Aluminum
BR	Brass
NY	Nylon
VO	Nylon 94 VO

Finish	Description
Z	Zinc - Clear Chromate
Z-BLK	Zinc - Black Chromate
Z-YEL	Zinc - Yellow Chromate
NI	Nickel
BLK-OX	Blk Oxide
ALOD	Alodine
ALOD-GOLD	Alodine Gold
P	Passivate
PLN	Plain
TIN	Tin (Soldering)

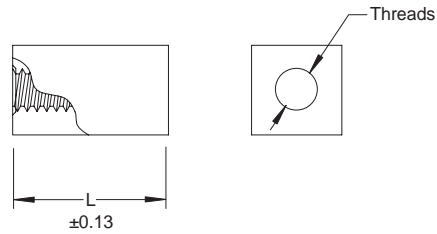
Custom finishes available.

SST - Mechanical Standoff

Square Standoff
Metric

Sample Part Number

SST4.5 - M2.5 x 25 - STL - Z
Series WAF Thread Length Material Finish



Thread	WAF Width Across Flats				
	4.5	6	8	10	13
M2.5 x 0.45					
M3.0 x 0.5					
M3.5 x 0.6					
M4.0 x 0.7					
M5.0 x 0.8					
M6.0 x 1.0					

Custom sizes available.

L Length
3
4
6
8
10
11
12
13
14
16
19
20
22
25

Material	Description
STL	Carbon Steel
SS	300 Series Stainless Steel
AL	Aluminum
BR	Brass
NY	Nylon
VO	Nylon 94 V-O

Finish	Description
Z	Zinc - Clear Chromate
Z-BLK	Zinc - Black Chromate
Z-YEL	Zinc - Yellow Chromate
NI	Nickel
BLK-OX	Blk Oxide
ALOD	Alodine
ALOD-GOLD	Alodine Gold
P	Passivate
PLN	Plain
TIN	Tin (Soldering)

Custom finishes available.

All Dimensions are in Metric

For Promotional Use Only!