

## TC - Standoff

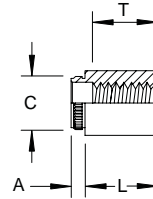
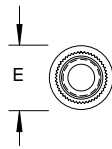
### Broaching

Inch

Sample Part Number

TCST - 440 - .250 - Z

Series/ Thread Length Finish  
Material Code

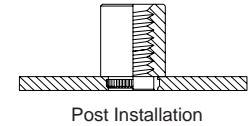
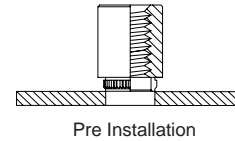


Thread	Thread Code	A MAX	Sheet Thickness MIN	Hole Size in Sheet +.003/-0.000	C ±.003	E ±.005	Dist. Hole C/L to Edge MIN
4 - 40	440	.060	.060	.166	.184	.219	.17
6 - 32	632	.060	.060	.213	.231	.281	.22

Material	Description	Finish	Description
ST	Carbon Steel	TIN	Tin
SS	300 Series Stainless Steel	P	Passivate
AL	Aluminum	PLN	Plain
BR	Brass	TIN	Tin

Custom sizes available.

(T) Thread Length MIN	Full					.375 ± .016				.375 Blind		
(L) Length ±.005	.125	.250	.375	.500	.625	.750	.875	1.000				



All Dimensions are in Inches

## TC - Standoff

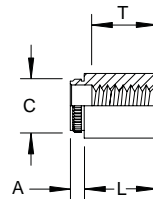
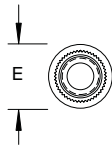
### Broaching

Metric

Sample Part Number

TCST - M3 - 16 - Z

Series/ Thread Length Finish  
Material Code

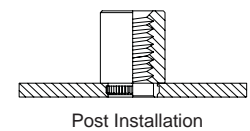
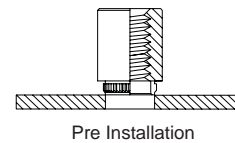


Thread	Thread Code	A MAX	Sheet Thickness MIN	Hole Size in Sheet +0.08	C ±0.08	E ±0.13	Dist. Hole C/L to Edge MIN
M3 x 0.5	M3	1.53	1.53	4.22	4.68	5.56	4.4

Material	Description	Finish	Description
ST	Carbon Steel	TIN	Tin
SS	300 Series Stainless Steel	P	Passivate
AL	Aluminum	PLN	Plain
BR	Brass	TIN	Tin

Custom sizes available.

(T) Thread Length (mm) MIN	Full						9.5 ± 0.4		
(L) Length (mm) ±0.13	3	4	6	8	10	12	14	16	



All Dimensions are in Metric