

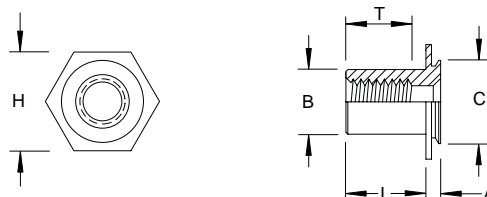
TA - Standoff

Self-Clinching, Concealed-Head

Inch

Sample Part Number

TAST - 440 - .250 - Z
 Series/ Thread Length Finish
 Material Code

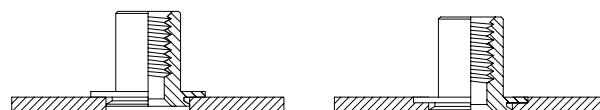


Thread	Thread Code	Sheet Thickness MIN	Blind Mounting Hole Diameter +.003/-0.000	Depth Blind Hole MIN	T Depth Full Thread MIN	A MAX	B MAX	C MAX	H NOM	Dist. Hole C/L to Edge MIN
4 - 40	440	.093	.213	.075	.188	.075	.165	.212	.250	.188
6 - 32	632	.093	.290	.075	.250	.075	.213	.289	.312	.219
8 - 32	832	.093	.312	.075	.250	.075	.245	.311	.344	.250
10 - 32	1032	.093	.344	.075	.375	.075	.290	.343	.375	.281
1/4 - 20	0420	.093	.390	.075	.375	.075	.354	.389	.438	.375

Material	Description	Finish	Description
ST	Carbon Steel	Z	Zinc Clear
SS	300 Series Stainless Steel	P	Passivate
S4	400 Series Stainless Steel	P	Passivate
AL	Aluminum	PLN	Plain

Custom sizes available.
 Type TA is blind at the Hex end.

(L) Length (in) +.002 - .005							
.187	.250	.312	.375	.500	.625	.750	1.00



Pre Installation

Post Installation

All Dimensions are in Inches

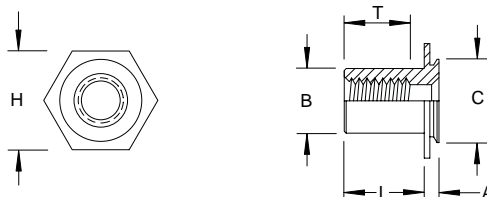
TA - Standoff

Self-Clinching, Concealed-Head

Metric

Sample Part Number

TAST - M3 - 20 - Z
 Series/ Thread Length Finish
 Material Code

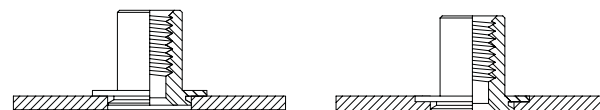


Thread	Thread Code	Sheet Thickness MIN	Blind Mounting Hole Diameter +0.08	Depth Blind Hole MIN	T Depth Full Thread MIN	A MAX	B MAX	C MAX	H NOM	Dist. Hole C/L to Edge MIN
M3 x 0.5	M3	2.4	5.41	1.91	5	1.91	4.2	5.39	6.35	4.8
M4 x 0.7	M4	2.4	7.92	1.91	6.5	1.91	6.23	7.9	8.74	6.4
M5 x 0.8	M5	2.4	8.74	1.91	9.6	1.91	7.37	8.72	9.53	7.2
M6 x 1	M6	2.4	9.9	1.91	9.6	1.91	9	9.89	11.11	9.5

Material	Description	Finish	Description
ST	Carbon Steel	Z	Zinc Clear
SS	300 Series Stainless Steel	P	Passivate
S4	400 Series Stainless Steel	P	Passivate
AL	Aluminum	PLN	Plain

Custom sizes available.
 Type TA is blind at the Hex end.

(L) Length (mm) +0.05 - 0.13							
4	6	8	10	12	16	20	25



Pre Installation

Post Installation

All Dimensions are in Metric