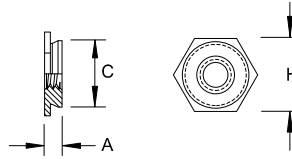


## NG - Nuts

Self-Clinching, Flush  
Inch

Sample Part Number

NGST - 1032 - .090 - Z  
Series/ Thread Shank Finish  
Material Code



Thread	Thread Code	A Shank MAX	Sheet Thickness	Hole Size in Sheet +.003/-0.000	C MAX	H NOM	Dist. Hole C/L to Edge MIN
2 - 56	256	.060	.060-.090	.172	.171	.188	.23
		.090	.091-UP				
4 - 40	440	.060	.060-.090	.172	.171	.188	.23
		.090	.091-UP				
6 - 32	632	.060	.060-.090	.213	.212	.250	.27
		.090	.091-UP				
8 - 32	832	.060	.060-.090	.290	.289	.312	.28
		.090	.091-UP				
10 - 32	1032	.060	.060-.090	.312	.311	.343	.31
		.090	.091-UP				
1/4 - 20	2520	.120	.125-.155	.344	.343	.375	.34
		.151	.156-.186				
		.182	.187-UP				

Material	Description	Finish	Description
ST	Carbon Steel	Z	Zinc Clear
SS	300 Series Stainless Steel	P	Passivate
S4	400 Series Stainless Steel	P	Passivate

Custom sizes available.



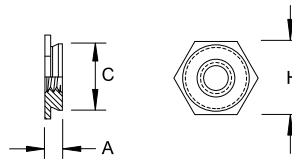
Revd. 06/1/11 All Dimensions are in Inch

## NG - Nuts

Self-Clinching, Flush  
Metric

Sample Part Number

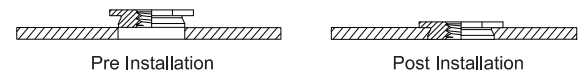
NGST - M4 - 2.3 - Z  
Series/ Thread Shank Finish  
Material Code



Thread	Thread Code	A Shank MAX	Sheet Thickness	Hole Size in Sheet +0.08	C MAX	H NOM	Dist. Hole C/L to Edge MIN
M2 x 0.4	M2	1.53	1.53-2.3	4.37	4.35	4.8	6
		2.3	2.32-UP				
M2.5 x 0.45	M2.5	1.53	1.53-2.3	4.37	4.35	4.8	6
		2.3	2.32-UP				
M3 x 0.5	M3	1.53	1.53-2.3	4.37	4.35	4.8	6
		2.3	2.32-UP				
M4 x 0.7	M4	1.53	1.53-2.3	7.37	7.35	7.9	7.2
		2.3	2.32-UP				
M5 x 0.8	M5	1.53	1.53-2.3	7.92	7.9	8.7	8
		2.3	2.32-UP				
M6 x 1	M6	3.05	3.18-3.94	8.74	8.72	9.5	8.8
		3.84	3.96-4.72				
		4.63	4.75-UP				

Material	Description	Finish	Description
ST	Carbon Steel	Z	Zinc Clear
SS	300 Series Stainless Steel	P	Passivate
S4	400 Series Stainless Steel	P	Passivate

Custom sizes available.



All Dimensions are in Metric