



# EDZ

## Expansion Diamond Zert

“Expansion Diamond Zert” is a press-in expansion insert designed for installation into hard thermo set plastics. As the screw is installed into the insert it expands allowing the diamond knurl to penetrate the plastic. This feature gives the insert a thread locking effect. Headed and reverse headed variations are available. *Performance values are on page 34.*

### Plastic Materials

Thermosetting Polyester	BMC
Vinyl Esther	Phenolic
Epoxy Resins	Ureas
SMC	Tufnol
DMC	

### Installation

Hand Tools	Fully Automated
Simple Press	

### Materials

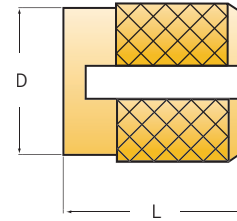
Brass

### Boss Design Reference

“Expansion Diamond Zert” is designed to be installed into a straight hole with a maximum of a 1° inclusive taper. Holes should not be counter sunk or counter bored as this will decrease the fasteners performance. The recommended hole size applies at the point reached by the bottom of the insert. Hole size tolerance  $-0.000 + 0.004$  inches. It is important that the screw fully penetrates the insert to allow for full expansion of the insert. Available In Brass. (other materials may be available on request)

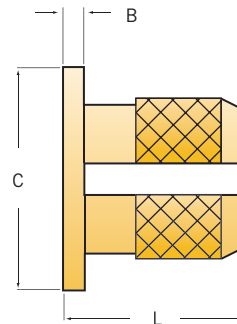
### Insert

## EDZ



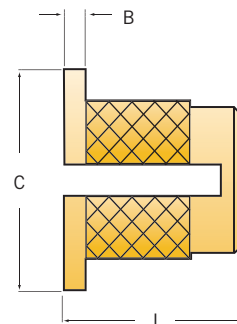
### Headed

## EDZH



### Reverse

## EDZR



# Expansion Diamond Zert

## Size Chart

Inch	Thread	L Insert Length	D Insert Dia.	B Head Thickness	C Head Dia.	H Hole Size (+.004 -.000)	W Min. Wall Thickness	EDZ Part Number	EDZH Part Number	EDZR Part Number
	2 - 56	.155	.124	.017	.187	.126	.094	EDZ - 256 - 155	EDZH - 256 - 155	EDZR - 256 - 155
4 - 40	.186	.156	.020	.218	.157	.126	EDZ - 440 - 186	EDZH - 440 - 186	EDZR - 440 - 186	
6 - 32	.249	.186	.026	.250	.189	.142	EDZ - 632 - 249	EDZH - 632 - 249	EDZR - 632 - 249	
8 - 32	.312	.217	.032	.281	.220	.157	EDZ - 832 - 312	EDZH - 832 - 312	EDZR - 832 - 312	
10 - 24	.371	.249	.039	.312	.252	.189	EDZ - 1024 - 371	EDZH - 1024 - 371	EDZR - 1024 - 371	
10 - 32	.371	.249	.039	.312	.252	.189	EDZ - 1032 - 371	EDZH - 1032 - 371	EDZR - 1032 - 371	
1/4 - 20	.497	.311	.049	.375	.315	.236	EDZ - 2520 - 497	EDZH - 2520 - 497	EDZR - 2520 - 497	
1/4 - 28	.497	.311	.049	.375	.315	.236	EDZ - 2528 - 497	EDZH - 2528 - 497	EDZR - 2528 - 497	
5/16 - 18	.497	.374	.049	.437	.378	.276	EDZ - 3118 - 497	EDZH - 3118 - 497	EDZR - 3118 - 497	
5/16 - 24	.497	.374	.049	.437	.378	.276	EDZ - 3124 - 497	EDZH - 3124 - 497	EDZR - 3124 - 497	

(All dimensions in inches)

Metric	Thread	L Insert Length	D Insert Dia.	B Head Thickness	C Head Dia.	H Hole Size (+0.10 -0.00)	W Min. Wall Thickness	EDZ Part Number	EDZH Part Number	EDZR Part Number
	M2	3.93	3.16	0.43	4.75	3.20	2.38	EDZ - M2 - 3.93	EDZH - M2 - 3.93	EDZR - M2 - 3.93
M2.5	4.72	3.97	0.51	5.54	4.00	3.20	EDZ - M2.5 - 4.72	EDZH - M2.5 - 4.72	EDZR - M2.5 - 4.72	
M3	4.72	3.97	0.51	5.54	4.00	3.20	EDZ - M3 - 4.72	EDZH - M3 - 4.72	EDZR - M3 - 4.72	
M3.5	6.32	4.72	0.66	6.35	4.80	3.60	EDZ - M3.5 - 6.32	EDZH - M3.5 - 6.32	EDZR - M3.5 - 6.32	
M4	7.92	5.52	0.81	7.14	5.60	4.00	EDZ - M4 - 7.92	EDZH - M4 - 7.92	EDZR - M4 - 7.92	
M5	9.42	6.32	1.00	7.92	6.40	4.80	EDZ - M5 - 9.42	EDZH - M5 - 9.42	EDZR - M5 - 9.42	
M6	12.62	7.90	1.24	9.53	8.00	6.00	EDZ - M6 - 12.62	EDZH - M6 - 12.62	EDZR - M6 - 12.62	
M8	12.62	9.50	1.24	11.10	9.60	7.00	EDZ - M8 - 12.62	EDZH - M8 - 12.62	EDZR - M8 - 12.62	

(All dimensions in millimeters)