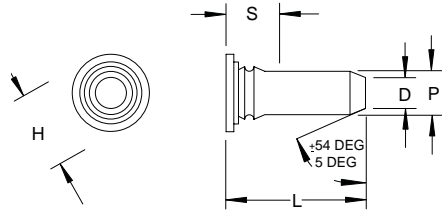


GT - Guide Pins

Self-Clinching, 55 Deg pilot pin
Inch

Sample Part Description

GTST - .125 - .375
Series/ Pin Length
Material Diameter Code



Pin Diameter P ±.002	Sheet Thickness MIN	Hole Size in Sheet +.003 -.000	D ±.006	H ±.015	S MAX	Distance Hole C/L to Edge MIN
.125	.040	.144	.090	.205	.090	.250
.187	.040	.205	.132	.270	.090	.280
.250	.040	.272	.177	.335	.090	.310

Material	Description	Finish	Description
ST	Carbon Steel	Z	Zinc Clear
SS	300 Series Stainless Steel	P	Passivate
S4	400 Series Stainless Steel	P	Passivate

Pin Diameter	(L) Length Code ±.015				
	.375	.500	.625	.750	1.00
125	6	8	10	12	-
187	6	8	10	12	16
250	-	8	10	12	16

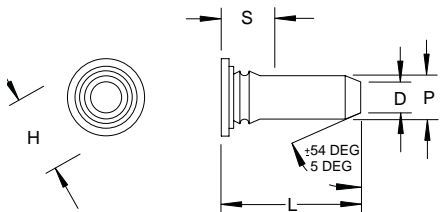
All Dimensions are in Inches

GT - Guide Pins

Self-Clinching, 55 Deg pilot pin
Metric

Sample Part Description

GTST - M5 - 10
Series/ Pin Length
Material Diameter Code



Pin Diameter P ±.002	Sheet Thickness MIN	Hole Size in Sheet +0.08	D ±0.15	H ±0.4	S MAX	Distance Hole C/L to Edge MIN
M3	1	3.5	2.05	5.2	2.29	6.4
M4	1	4.5	2.82	6.12	2.29	7.1
M5	1	5.5	3.53	7.19	2.29	7.6
M6	1	6.5	4.24	8.13	2.29	7.9

Material	Description	Finish	Description
ST	Carbon Steel	Z	Zinc Clear
SS	300 Series Stainless Steel	P	Passivate
S4	400 Series Stainless Steel	P	Passivate

Pin Diameter	(L) Length Code MM ±0.4				
	8	10	12	16	-
M3	8	10	12	16	-
M4	8	10	12	16	-
M5	-	10	12	16	20
M6	-	-	12	16	20

All Dimensions are in Metric